



Amdahl

Angus & Hereford

44th Production Sale

SATURDAY, NOVEMBER 21, 2020

1:00 p.m. MST • at the ranch, 12 miles north of Rapid City, SD

Selling: **100 ANGUS BULLS**
40 HEREFORD BULLS
40 ANGUS BRED FEMALES
10 HEREFORD BRED FEMALES
1 ANGUS DONOR COW
PICK OF 2020 ANGUS HEIFERS
PICK OF 2020 HEREFORD HEIFERS



Bred and Raised the #1 Proven EPD Cow in the Angus Breed, 10 sons sell!

AMDAHL ANGUS & HEREFORD

Look forward to working with you to increase your bottom line

Saturday, November 21, 2020

1:00 PM MT • at the Ranch 12 miles N. of Rapid City, SD

SELLING:

- 100 Angus Bulls
- 40 Hereford Bulls
- 40 Angus Bred Females
- 10 Hereford Bred Females
- 1 Angus Donor Cow
- Pick of 2020 Angus Heifers
- Pick of 2020 Hereford Heifers

**Bulls will sell in
Catalog Order**



Auctioneer:
Doug Dietterle
605-580-1362

Sale Day Phones:

Tim: 605-929-3717
JD: 605-999-6487
Marcia: 605-929-3712
Jim: 605-381-9519

Sale Representatives:

- Art Handel, Jr., *Handel Marketing*605-391-8233
- Marc Hotchkiss, *The Livestock Link*605-490-1513
- Jill Hotchkiss, *Hereford America*605-490-1409
- Ryan Casteel, *Cattle Business Weekly*605-423-6000
- Scott Dirk, *Tri-State Livestock News*605-380-6024
- Beau Ravellette, *RPI Promotions*605-685-8155
- Don Ravellette, *RPI Promotions*605-685-5147
- Rod Geppert, *American Angus Association*605-295-3673
- Cody Negri, *Wyoming Roundup*208-697-1093

Livestock Videoing • Video Sales • Bid-by-Click Online Sales



Bid online!

If you are unable to attend the sale,
you can register to watch or bid online through
The Livestock Link.

Visit www.TheLivestockLink.com
See Page 40 for more information



visit us on the web to view photos & videos
AmdahlAngusandHereford.com

Tim Amdahl: 605-929-3717 • JD Amdahl: 605-999-6487

Tim & Marcia Amdahl, JD & Annie Amdahl

TJ & Alicia Amdahl

21747 Coyote Lane, Piedmont, SD 57769

TimAmdahl@yahoo.com



Raising beef cattle in South Dakota since 1884 | Registered Cattle since 1972

*Where Quality
Runs
Generations
Deep*



Welcome to Amdahl Angus & Herefords Bull and Female Sale

Welcome to the Amdahl Angus and Hereford 2020 Bull and Female Sale. We thank you, our customers, friends and family for your help throughout the years. We once again feel blessed to not only work with livestock on a daily basis, but continue to do what we love and enjoy. We appreciate your interest in our program and look forward to serving you in your breeding decisions and seed stock needs.

The bulls will be semen tested, vaccinated, branded and delivered at your convenience.

Whether you're in the commercial or registered cattle business, we know the key to your success is producing a live calf at birth and the top cut quality calf that weighs down the scales come weaning time, still keeping as our top priority that females are the backbone to any successful operation. That's why we continue to place a huge emphasis on maternal traits, growth and structural soundness.

Intensive use of powerful donors and extensive embryo transfer has allowed us to progressively enhance the phenotypic and performance genetics that our costumers desire.

We hope that you contact us directly if you have any specific questions or if we can be of any assistance at all. As always, we thank you in advance for supporting our program and look forward to seeing you at the ranch on November 21st.

God Bless,

Tim and Marcia, F. D., Annie and Coley Amdahl



Tim & Marcia Amdahl



J.D., Annie and Coley Amdahl





Delivery

March 1st the bulls will be semen tested and delivery will start to central locations and if possible, to your ranch. We are offering free nation wide delivery on purchases of 3 or more bulls and/or females. Purchases of less than 3 animals qualify for 200 mile free delivery. Bred females sold in groups do not qualify for delivery, buyer is responsible for their trucking.

Volume Discount

We offer volume discounts according to the number of bulls you purchase. Purchase 5 or more bulls and receive a 5% discount. Purchase 10 or more bulls and receive a 10% discount. Must be bought by one individual.

Terms and Conditions

Amdahl Angus and Hereford reserves the right to use bulls A.I. and a select group of bulls naturally in pen breeding.

Inspection of Cattle

Cattle will be available for inspection at the ranch anytime prior to the sale, call to make arrangements.

Health

Interstate health papers furnished on all cattle selling.

EPDs & \$Values

The American Angus Association is now calculating EPDs on a weekly basis using all available carcass harvest data, ultrasound data and the Igenity Angus specific genome profile data. It is possible new data has been submitted between the date the catalog was finalized and sale day which will affect the individual EPDs and \$Value Indexes of the animals selling. If your purchasing decision relies highly on the most current carcass data available, please look up animals of interest on the American Angus Association web page prior to viewing the sale offering.

Sale Order

Sale order in catalog order.

Terms

All sales are cash sales unless other arrangements are made with JD or Tim Amdahl

Supplement Sheets

Will be available sale day with any updates.

Sight-Unseen Purchases

If you can't attend our sale, we would be happy to help you select and purchase your bull. We know our bulls well and by visiting with you, we feel we can buy a bull that will fit your program. Some people prefer this. Call anytime at 605-929-3717 or 605-999-6487.

Additional Insurance

Will be available sale day.

Liability

All persons attending this sale do so at their own risk, legal or otherwise, for their safety or the behavior of the animals. The Owners, Auction Service and Sale Staff assume no liability for property loss or any accidents that may occur.

Announcements

From the block will take precedence over the catalog. Buyers unable to attend may send their bids to the Auction Service, Field Representatives or Auctioneer.

Lunch

Lunch will be available sale day.

**\$300 TAKEN OFF FALL OR
2-YEAR-OLD BULLS TAKEN
HOME ON SALE DAY**



We have the strongest set of bulls we have ever offered front to back in our catalog. We would like to show you our bulls and females before sale day. We appreciate you as a customer and look forward to working with you.

OUR 5-STAR SYSTEM

★★★★★

CALVING EASE

5-Star Rating System: Most of our bulls offered for sale could be used on first calf heifers due to shape and size. To help you identify our calving ease proven bulls, we have a 5-Star rated system, 5-Star being our easiest calving. Our 1 and 2 Stars are for cows, because the sires are less proven on heifers. Our 3, 4 & 5-Star rated bulls are out of proven calving ease bloodlines for birth weight and shape. These bulls will work the easiest on heifers.

Guarantee

All bulls selling will be covered 50% by Amdahl Angus and Hereford until November 1, 2021. Buyer must let us know immediately if injury occurs to a bull. If a bull becomes injured and does not recover, we will give you credit towards one replacement bull or credit in next years sale less salvage value (\$1,500). Bull needs to be evaluated by a qualified vet before selling. We want to work with our customers in their future success. We are here to help and encourage you in the cattle business.

Wintering

All bulls are available for our free wintering. If bulls need to be kept longer, we will certainly work with you to deliver bulls at the best time for you and your program. We will charge \$3.00 per day for feed for the bulls kept longer than March 1st. Females do not qualify for free wintering. Buyer is responsible for feed cost on females kept longer THAN one week after the sale. Fall and 2-year-old bulls will qualify for a \$300 discount on purchase if taken home on sale day.

Directions to the sale site on page 7

HOW MUCH CAN YOU AFFORD TO PAY FOR A TOP BULL?



COWMAN FORMULA

Increase in pounds per calf from a top-performance bull
X No. of cows bred to him per year
X No. of years to keep the bull
X Expected selling price of calves
= Additional dollars you can pay for a better bull

Example: A bull who will add 30 lbs. to the weaning weight of each of his calves mated to 25 cows per year for 4 years and you sell the calves for \$1.60 per pound.

$$30 \times 25 = 750 \times 4 = 3000 \times \$1.60 = \$4,800$$

This bull is worth \$4,800 more than the average bull who will keep your weaning weights the same. Take this formula and put your own figures in and see what you can afford to pay. This equation does not consider the increase in value due to calving-ease, higher quality replacement heifers, yearling growth, feedlot gain and improved carcass quality.

A LEADER IN DNA TESTING.

We have one of the most genetically tested herds in the breed for accuracy. We have DNA tested our bulls for Genetic Accuracy in calving ease, maternal and carcass quality. Our ADG is from birth to yearling not just a short test period. We all want a consistent product- that's why we do DNA testing, Embryo work and seek out the best genetics to raise bulls and females for our customers. Here is a formula you can use to show what a bull that would increase your weaning weight by 30 pounds would be worth.

IT WOULD BE OUR PLEASURE TO ASSIST YOU IN YOUR MARKETING NEEDS.

We would like to help you market your cattle out of our bulls. We have Order Buyers asking us where and when calves out of our bulls are selling. We get calls every year for Blacks, Black white face and Hereford open heifers.

Please give us a call.

-Tim Amdahl 605-929-3717 | J.D. Amdahl 605-999-6487



The Big Cut Pays

Having more calves make the big cut when you ship is a sure-fire way to add profit. Amdahl bulls will add more pounds and consistency to your calf crop. We feel consistent performance is crucial in making high quality steers and heifers. Our bulls averaged 3.4 pounds from the time they hit the ground at birth to their 365 day weights, that is truly the only way to give an average daily gain.

Angus Reference Sires



G A R PHOENIX

BD: 08/15/2016		Reg No: +*18636106		Tattoo: 6146		CW		
CONNEALY IN SURE 8524		MYTTY IN FOCUS				+76		
G A R SURE FIRE AAA +*17328461		ENTREENA OF CONANGA 657				Marb		
CHAIR ROCK 5050 G A R 8086		G A R NEW DESIGN 5050				+1.12		
G A R PROPHET		CHAIR ROCK GRID MAKER 2107				RE		
G A R PROPHET N744 AAA +*18127279		C R A BEXTOR 872 5205 608				+0.90		
G A R DAYBREAK 440		G A R OBJECTIVE 1885				Fat		
		MCC DAYBREAK				+0.039		
		G A R YIELD GRADE N76						
CED	BW	WW	YW	SC	Milk	SW	SF	SB
+14	-0.3	+78	+140	+2.46	+25	+80	+114	+190

Phoenix will add growth, maternal power, calving-ease and strong carcass traits. He is also one of the top bulls in the breed for Scrotal.



SYDGEN ENHANCE

BD: 01/27/2015		Reg No: 18170041		Tattoo: 5209		CW		
SYDGEN GOOGOL		D A R INFINITY 313				+64		
SYDGEN EXCEED 3223 AAA *17501893		SYDGEN FOREVER LADY 4087				Marb		
SYDGEN FOREVER LADY 1255		SYDGEN 928 DESTINATION 5420				+1.13		
SYDGEN LIBERTY GA 8627		SYDGEN FOREVER LADY 8114				RE		
SYDGEN RITA 2618 AAA 17405676		CONNEALY FORWARD				+0.73		
FOX RUN RITA 9308		SYDGEN BLACKBIRD GA 051				Fat		
		G T SHEAR FORCE				+0.004		
		LIMESTONE RITA U0004						
CED	BW	WW	YW	SC	Milk	SW	SF	SB
+10	+0.1	+67	+136	+1.67	+27	+69	+125	+201

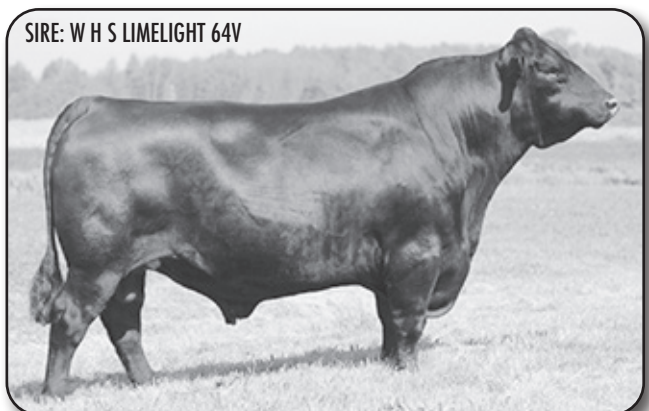
One of the breeds popular up and coming herd sires. Enhance will add calving-ease, Scrotal, docility, strong carcass traits and is one of the top \$B bulls in the breed.



AMDAHL'S ROCKETEER 636

BD: 01/27/2016		Reg No: *18529618		Tattoo: 636		CW		
KOUPLAS B&B IDENTITY		SITZ UPWARD 307R				+53		
MUSGRAVE AVIATOR AAA *17264774		B&B ERICA 605				Marb		
MCATL FOREVER LADY 1429-138		S A V FINAL ANSWER 0035				+0.75		
G A R PROPHET		ALC FOREVER LADY R02S				RE		
AMDAHL ERICA 431-465 AAA 17986116		C R A BEXTOR 872 5205 608				+0.79		
S A 1117 HOMER 431 228		G A R OBJECTIVE 1885				Fat		
		S A 650H HOMER 1117 911				+0.004		
		S A 8210 ANCHOR 228 630						
CED	BW	WW	YW	SC	Milk	SW	SF	SB
+3	+1.8	+62	+107	+55	+28	+66	+97	+156

Amdahl Rocketeer is a strong maternal bull with outstanding growth and will put length of body into his progeny.



AMDAHL'S HEAVY DUTY 323

BD: 03/01/2013		Reg No: 17716306		Tattoo: 323		CW		
MYTTY IN FOCUS		S A F FOCUS OF E R				+53		
W H S LIMELIGHT 64V AAA # *16073564		MYTTY COUNTESS 906				Marb		
W H S PREDESTINED LASS 77T		G A R PREDESTINED				+0.65		
S A V FINAL ANSWER 0035		W H S 8180 LASS 14K				RE		
D R BLACKBIRD 133 AAA #17440787		SITZ TRAVELER 8180				+0.67		
D R BLACKBIRD 2511		S A V EMULOUS 8145				Fat		
		O C C NEUTON 713				-0.045		
		D R RITA TRAVELER 0631						
CED	BW	WW	YW	SC	Milk	SW	SF	SB
+7	+2.3	+78	+131	+1.89	+25	+76	+96	+154

Heavy Duty is a powerful growth bull that will add depth of body and make excellent replacement females.

Angus Reference Sires



AMDAHL LANDMARK 712

BD: 01/11/2017	Reg No: 18938548	Tattoo: 712	
CB BLOCK PARTY 156	AAA 18315612	WERNER WAR PARTY 2417	CW
AMDAHL'S BLOCK PARTY 557		CB 965 MAINLINE	+70
D R QUEEN 127		S A V FINAL ANSWER 0035	Marb
		D R QUEEN 7036	-0.19
		O C C LINEBRED 661L	RE
AMDAHL'S ULTIMATE 802		P A R ERIKA'S TRAVELER 52	+0.48
AMDAHL MISS ULTIMATE747W-103	AAA #17183570	O C C TOTAL 616T	Fat
O C C MISS NEWSLINE 747W		KSU MISS NEWSLINE 7197	-0.039

CED	BW	WW	YW	SC	Milk	\$W	\$F	\$B
+10	-0.2	+79	+134	+1.25	+21	+80	+111	+127

Landmark 712 is backed by some of the best females that walking the pastures in the Amdahl program. He adds length of body, is deep ribbed and has second to none fleshing-ability.



AMDAHL'S ALL AMERICAN 324

BD: 03/01/2013	Reg No: 17713871	Tattoo: 324	
S A F FOCUS OF E R	AAA # *13880818	S A F FAME	CW
MYTTY IN FOCUS		G D A R FOREVER LADY 246	+32
MYTTY COUNTESS 906		SITZ ALLIANCE 6595	Marb
		BALDRIDGE COUNTESS 357	+0.36
		SITZ TRAVELER 8180	RE
S A V FINAL ANSWER 0035		S A V EMULOUS 8145	+0.41
D R QUEEN 127	AAA #17440782	MOHNN BRUSHPOPPER 353	Fat
D R QUEEN 7036		D R QUEEN 2634	+0.029

CED	BW	WW	YW	SC	Milk	\$W	\$F	\$B
+16	-2.2	+52	+93	+1.77	+32	+66	+71	+105

All American offers exceptional calving-ease with strong maternal values.



CONNELY TREASURE 0369

BD: 01/25/2017	Reg No: 18870405	Tattoo: 7414	
V A R DISCOVERY 2240	AAA +*18156972	A A R TEN X 7008 S A	CW
MGR TREASURE		DEER VALLEY RITA 0308	+36
SJH IMPRESSION OF 6108 1614		CONNELY IMPRESSION	Marb
		DRMCTR 111 RITA 6108	+1.11
		G A R RETAIL PRODUCT	RE
CONNELY MENTOR 7374		EXECUTA OF CONANGA 939	+0.20
JMC HIPPIE EXEC 0369 45121	AAA +16905824	MILLERS BULLSEYE J373	Fat
JMC HIPPIES BULLSEYE 45121 65		HIPPIE OF CONANGA 067	+0.078

CED	BW	WW	YW	SC	Milk	\$W	\$F	\$B
+13	-1.2	+60	+106	+1.49	+11	+50	+76	+139

Treasure 7414 is a bull that we used naturally in our own herd and is one of the breed's top bulls for calving-ease, fleshing-ability, Scrotal and Marbling.



DEER VALLEY GROWTH FUND

BD: 01/22/2017	Reg No: +*18827828	Tattoo: 71122	
BASIN PAYWEIGHT 006S	AAA #*17038724	VERMILION PAYWEIGHT J847	CW
BASIN PAYWEIGHT 1682		BASIN LUCY 3829	+81
21AR O LASS 7017		HARB PENDLETON 765 J H	Marb
		21AR O LASS F24A	+0.57
		SITZ UPWARD 307R	RE
PLATTEMERE WEIGH UP K360		BARBARA OF PLATTEMERE 337	+0.61
DEER VALLEY RITA 36113	AAA +*17785214	G A R NEW DESIGN 5050	Fat
DEER VALLEY RITA 9457		G A R EXT 614	+0.048

CED	BW	WW	YW	SC	Milk	\$W	\$F	\$B
+10	+1.4	+90	+157	+0.66	+29	+95	+123	+168

Growth Fund will add to your herd's depth of body, eye appeal and strong maternal traits.

Angus Reference Sires



BAR R JET BLACK 5063

BD: 07/30/2015		Reg No: *18389838		Tattoo: 5063		CW		
CONNEALY CONSENSUS 7229		CONNEALY CONSENSUS		BLUE LILLY OF CONANGA 16		+66		
CONNEALY BLACK GRANITE AAA #*17028963		S A V BISMARCK 5682		EURA CAL OF CONANGA 56B		Marb		
EURA ELGA OF CONANGA 9109		CONNEALY ONWARD		SITZ HENRIETTA PRIDE 81M		+0.54		
SITZ UPWARD 307R		BAR R ANITA 0113 AAA 16858609		MYTTY IN FOCUS		RE		
BAR R ANITA 7081		BAR R ANITA 5023				+0.81		
						Fat		
						+0.007		
CED	BW	WW	YW	SC	Milk	SW	SF	SB
+8	+1.7	+78	+140	+1.14	+23	+74	+120	+170

Jet Black will add pounds, style and a strong EPD profile to his progeny.



AMDAHL RANGE MASTER 830

BD: 01/13/2018		Reg No: *19274953		Tattoo: 830		CW		
HA OUTSIDE 3008		KG SOLUTION 0018		HA EVER LADY 1575		+41		
HA COWBOY UP 5405 AAA *18286467		SITZ UPWARD 307R		HA BLACKCAP LADY 5515		Marb		
HA BLACKCAP LADY 1602		CB BLOCK PARTY 156		AMDAHL'S MISS BLAZE 272 041		+0.52		
AMDAHL BLOCK PARTY 368		AMDAHL MISS BP 380-509 AAA #18321040		O C C HOMER 650H		RE		
AMDAHL MISS HOMER 172-380		AMDAHL MISS PP 7155-172				+0.36		
						Fat		
						-0.034		
CED	BW	WW	YW	SC	Milk	SW	SF	SB
+8	+2.1	+72	+128	+1.04	+15	+55	+74	+120

Range Master adds depth of rib and loads of thickness packed into a moderate frame. He is backed by generations of Pathfinder cows.



BUBS SOUTHERN CHARM AA31

BD: 10/31/2013		Reg No: *17853196		Tattoo: AA31		CW		
BT CROSSOVER 758N		C A FUTURE DIRECTION 5321		BT ROYAL PRIDE 237G		+41		
SILVEIRAS CONVERSION 8064 AAA *16262077		BR MIDLAND		EXAR SARAS DREAM 9809		Marb		
EXG SARAS DREAM 5609 R3		H A POWER ALLIANCE 1025		BLACK CRESSA OF CONANGA 5332		+0.81		
CONNEALY STIMULUS 8419		HICKORY HILL ERICA 009 AAA *16944100		MORGANS DIRECTION 111 9901		RE		
HICKORY HILL ERICA TA32		HICKORY HILL ERICA RA58				+0.82		
						Fat		
						+0.007		
CED	BW	WW	YW	SC	Milk	SW	SF	SB
+5	+3.1	+68	+114	+2.01	+27	+70	+80	+143

Southern Charm is one of the most popular sires in the breed and adds style, consistency and depth of body.

CONNEALY WEIGH UP 9109 5147

BD: 01/19/2018		Reg No: +*19284854		Tattoo: 861L		CW		
SITZ UPWARD 307R		CONNEALY ONWARD		SITZ HENRIETTA PRIDE 81M		+42		
PLATTEMERE WEIGH UP K360 AAA #*16692552		G A R RETAIL PRODUCT		BARBARA OF PLATTEMERE 311		Marb		
BARBARA OF PLATTEMERE 337		G A R GRID MAKER		S A V ABIGALE 0451		+0.26		
S A V BISMARCK 5682		CONNEALY BLACK BARON OF SCAR		ELGINA OF CONANGA 868 232		RE		
EURA ELGA OF CONANGA 9109 AAA #16448837		EURA CAL OF CONANGA 56B				+0.63		
						Fat		
						+0.006		
CED	BW	WW	YW	SC	Milk	SW	SF	SB
+16	-0.6	+69	+118	+0.64	+26	+75	+81	+116

861 is backed by the prolific 9109 cow which is the mother of Black Granite and many other herd sires. Weigh Up 861 adds calving-ease, growth and maternal traits.

AMDAHL'S ULTIMATE 802

BD: 03/19/2008		Reg No: 16267946		Tattoo: 802		CW		
O C C HOMER 650H		O C C FOCUS 813F		O C C DIXIE ERICA 816B		+11		
O C C LINEBRED 661L AAA #14051770		O C C EMBLAZON 854E		O C C DIXIE ERICA 816B		Marb		
O C C DIXIE ERICA 686J		O C C GLADIATOR 612G		P A R TRAVELERS HEROINE 13		+0.01		
P A R GLADIATOR 270		P A R TRAVELER 52 AAA 14354152		P A R HEAVY TRAVELER 67		RE		
P A R ERIKA'S TRAVELER ADO		P A R M ERIKAS TOP DAWG 68				-0.04		
						Fat		
						-0.007		
CED	BW	WW	YW	SC	Milk	SW	SF	SB
+20	-3.9	+38	+68	+0.60	+17	+37	+57	+72

Amdahl Ultimate is one of the top calving-ease bulls that we have ever used in our history. He consistently adds thickness, style and sure fire calving-ease to his progeny.

Angus Reference Sires

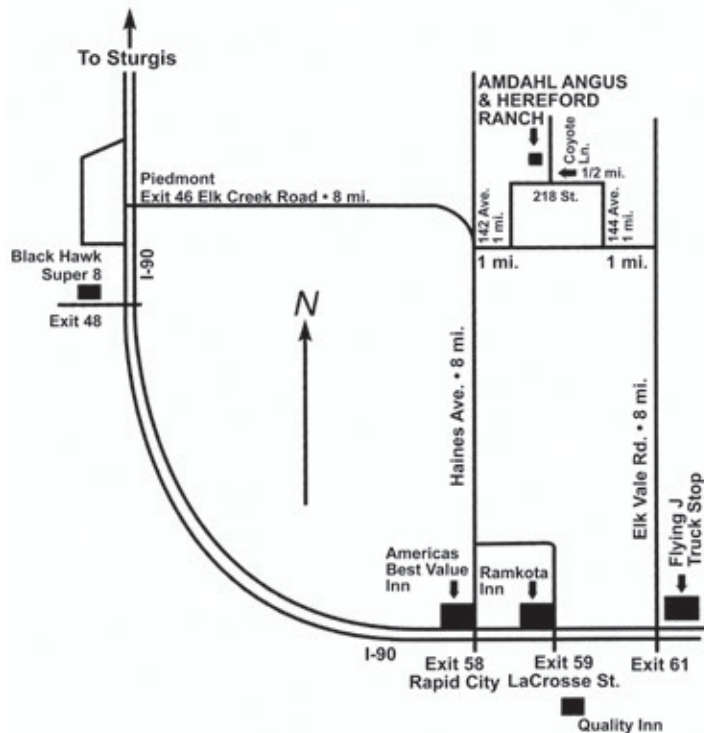


G A R PROPHET

BD: 08/15/2008	Reg No: #*16295688	Tattoo: 6128	CW
B A R EXT TRAVELER 205	N B A R EMULATION EXT		+43
C R A BEXTOR 872 5205 608 AAA #13009379	B A R QUEEN TRAVELER 3015		Marb
CRA LADY JAYE 608 498 S EASY	G A R SLEEP EASY 1009		+1.43
	H H F 917 LADY 975 498		RE
S S OBJECTIVE T510 0T26	S S TRAVELER 6807 T510		+0.30
G A R OBJECTIVE 1885 AAA +15129456	S S MISS RITA R011 7R8		Fat
G A R 1407 NEW DESIGN 2232	BON VIEW NEW DESIGN 1407		+0.061
	G A R PRECISION 2610		

CED	BW	WW	YW	SC	Milk	\$W	\$F	\$B
+11	+1.2	+70	+122	+0.06	+31	+98	+64	+144

One of the breed's top sires for calving-ease, marbling and maternal traits.



A big thanks to Adrian Limberg for all of his help year around.



*#1 proven EPD
cow in the
Angus Breed*

Amdahl Erica Hickok 544

is a Donor Dam to Lots 1-5,
grandmother to Lot 6,
and mother to Lots 7-9
and Lots 30 and 31.

**Bred and raised
at the ranch**

Angus Fall Bulls



**LOT
1**

**Lot
1**

AMDAHL GROWTH FUND 9200

BD: 08/21/19 Reg No: 19798228 Tattoo: 9200

BASIN PAYWEIGHT 1682
DEER VALLEY GROWTH FUND
DEER VALLEY RITA 36113
ANGUS
MILL BAR HICKOK 7242
AMDAHL ERICA HICKOK 104-544
D R ERICA 104

BASIN PAYWEIGHT 006S	CW
21AR O LASS 7017	+76
PLATTEMERE WEIGH UP K360	Marb
DEER VALLEY RITA 9457	+0.69
CONNELLY CONSENSUS 7229	RE
MILL BAR BEMINDFUL MAID 6304	+0.36
MYTTY IN FOCUS	
D R ERICA 967	

CED	BW	WW	YW	SC	Milk	SW	SF	SB
+6	+1.8	+92	+164	+1.40	+24	+87	+113	+162

BW: 84	Adj. WW: 792	WWR: 100	1-5 Star Rating • C/E: 3-5 Hfirs/1-2 Cows		
C/E	Fleshing	Disposition	3	5	5

- 365 Adj. Wt: 1,331 lbs.
- **Full brothers 9200/9207**
- These two full brothers are an excellent opportunity to select a powerhouse combination of phenotype, depth of body and second to none EPD profile.
- Their sire, Growth Fund consistently sires depth of body and eye appeal.
- Their donor dam, Erica Hickok 544 has consistently produced depth of body and pure power.



**LOT
2**

**Lot
2**

AMDAHL GROWTH FUND 9207

BD: 08/31/19 Reg No: 19798229 Tattoo: 9207

CED	BW	WW	YW	SC	Milk	SW	SF	SB
+9	+2.5	+89	+159	+0.50	+25	+83	+119	+159

ANGUS	CW	+77	Marb	+0.39	RE	+0.68
--------------	----	-----	------	-------	----	-------

BW: 78	Adj. WW: 718	WWR: 100	1-5 Star Rating • C/E: 3-5 Hfirs/1-2 Cows		
C/E	Fleshing	Disposition	4	5	5

- 365 Adj. Wt: 1,243 lbs.

Angus Fall Bulls

Lot 3

AMDAHL ENHANCE 9206

BD: 08/31/19 Reg No: 19799458 Tattoo: 9206

SYDGEN EXCEED 3223	SYDGEN GOOGOL	CW
SYDGEN ENHANCE	SYDGEN FOREVER LADY 1255	+64
SYDGEN RITA 2618	SYDGEN LIBERTY GA 8627	Marb
ANGUS MILL BAR HICKOK 7242	FOX RUN RITA 9308	+0.86
AMDAHL ERICA HICKOK 104-544	CONNELLY CONSENSUS 7229	RE
D R ERICA 104	MILL BAR BEMINDFUL MAID 6304	+0.40
	MYTTY IN FOCUS	
	D R ERICA 967	

CED	BW	WW	YW	SC	Milk	SW	SF	SB
+7	+2.0	+78	+141	+2.03	+32	+84	+101	+160

BW: 79	Adj. WW: 767	WWR: 100	1-5 Star Rating • C/E: 3-5 Hfirs/1-2 Cows
			C/E Flething Disposition
			3 4 5

- 365 Adj. Wt: 1,249 lbs.
- Full brothers 9204/9205/9206
- This trio of full brothers offers an unmatched spread in the EPDs from birth all the way through yearling. This is a great chance to select from these three ET brothers. Their docility is second to none in the offering.
- Their sire is one of the most popular bulls in the breed for his calving-ease, carcass merit and performance.
- Their donor dam, Erica Hickok 544 has consistently produced depth of body and pure power.



LOT 3

Lot 4

AMDAHL ENHANCE 9205

BD: 08/30/19 Reg No: 19799457 Tattoo: 9205

CED	BW	WW	YW	SC	Milk	SW	SF	SB
+1	+2.1	+86	+152	+2.74	+22	+80	+119	+185

ANGUS	CW	+75	Marb	+0.87	RE	+0.88
--------------	----	-----	------	-------	----	-------

BW: 76	Adj. WW: 750	WWR: 100	1-5 Star Rating • C/E: 3-5 Hfirs/1-2 Cows
			C/E Flething Disposition
			3 4 5

- 365 Adj. Wt: 1,251 lbs.



LOT 4

Lot 5

AMDAHL ENHANCE 9204

BD: 08/28/19 Reg No: 19799456 Tattoo: 9204

CED	BW	WW	YW	SC	Milk	SW	SF	SB
+3	+2.8	+79	+141	+1.50	+23	+71	+111	+174

ANGUS	CW	+66	Marb	+0.91	RE	+0.46
--------------	----	-----	------	-------	----	-------

BW: 84	Adj. WW: 725	WWR: 100	1-5 Star Rating • C/E: 3-5 Hfirs/1-2 Cows
			C/E Flething Disposition
			3 3 5

- 365 Adj. Wt: 1,215 lbs.



LOT 5

Lot 6

AMDAHL AVIATOR 9203

BD: 08/22/19 Reg No: 19788268 Tattoo: 9203

MUSGRAVE AVIATOR	KOUPALS B&B IDENTITY	CW
BVC AVIATOR 4007	MCATL FOREVER LADY 1429-138	+38
BVC ROGUE PRIDE CC7 228	SYDGEN C C & 7	Marb
ANGUS	B V C ROGUE PRIDE	+0.53
BVC AVIATOR 4003	MUSGRAVE AVIATOR	RE
AMDAHL ERICA 544-7146	BVC LUCY TH 263	+0.52
AMDAHL ERICA HICKOK 104-544	MILL BAR HICKOK 7242	
	D R ERICA 104	

CED	BW	WW	YW	SC	Milk	SW	SF	SB
+11	+0.6	+61	+104	+0.66	+22	+63	+77	+121

BW: 79	Adj. WW: 685	WWR: 100	1-5 Star Rating • C/E: 3-5 Hfirs/1-2 Cows
			C/E Flething Disposition
			5 4 2

- 365 Adj. Wt: 1,200 lbs.
- A moderate, thick herd bull with strong maternal traits.

Angus Bulls

Fall Bull



Lot 7 **AMDAHL SOUTHERN CHARM 9210**
 BD: 10/18/19 Reg No: 19799338 Tattoo: 9210

SILVEIRAS CONVERSION 8064	BT CROSSOVER 758N	CW
BUBS SOUTHERN CHARM AA31	EXG SARAS DREAM S609 R3	+79
HICKORY HILL ERICA 009	CONNEALY STIMULUS 8419	Marb
ANGUS SS	HICKORY HILL ERICA TA32	+0.54
MILL BAR HICKOK 7242	CONNEALY CONSENSUS 7229	RE
AMDAHL ERICA HICKOK 104-544	MILL BAR BEMINDFUL MAID 6304	+0.67
D R ERICA 104	MYTTY IN FOCUS	
	D R ERICA 967	

CED	BW	WW	YW	SC	Milk	SW	SF	SB
+0	+4.9	+104	+173	+2.63	+23	+92	+106	+154
BW: 82 Adj. WW: 889 WWR: 100								
1-5 Star Rating • C/E: 3-5 Hfrs/1-2 Cows								
			C/E	Fleshing	Disposition			
			1	4	5			

- 365 Adj. Wt: 1,342 lbs.
- All full brothers 028/077/9210
- These three full brothers are one like another with their depth of body, great weaning ratios and true herd bull look. One of the best flushes out of the great 544 cow.
- Their sire, Bubs Southern Charm sires great consistency for depth of body, style and performance.
- Their donor dam, Erica Hickok 544 has consistently produced depth of body and pure power.



Lot 8 **AMDAHL SOUTHERN CHARM 028**
 BD: 01/09/20 Reg No: 19799334 Tattoo: 028

CED	BW	WW	YW	SC	Milk	SW	SF	SB
+6	+2.4	+80	+128	+1.96	+20	+80	+78	+124
BW: 82 Adj. WW: 789 WWR: 100								
ANGUS SS								
			CW	+47	Marb	+0.53	RE	+0.53
1-5 Star Rating • C/E: 3-5 Hfrs/1-2 Cows								
			C/E	Fleshing	Disposition			
			3	5	5			



Lot 9 **AMDAHL SOUTHERN CHARM 077**
 BD: 01/17/20 Reg No: 19799336 Tattoo: 077

CED	BW	WW	YW	SC	Milk	SW	SF	SB
+4	+3.1	+75	+128	+1.79	+28	+75	+88	+132
BW: 81 Adj. WW: 810 WWR: 100								
ANGUS SS								
			CW	+53	Marb	+0.41	RE	+0.75
1-5 Star Rating • C/E: 3-5 Hfrs/1-2 Cows								
			C/E	Fleshing	Disposition			
			2	4	5			

Champion Pen of Bulls and the heaviest set of bull calves at the 2020 Central States Fair



DAM OF LOTS 7-9: AMDAHL ERICA HICKOK 104-544

Angus Bulls

Lot 10

AMDAHL JET BLACK 9208

BD: 10/06/19 Reg No: 19799439 Tattoo: 9208

CONNEALY BLACK GRANITE
BAR R JET BLACK 5063
BAR R IRIS ANITA 0113

ANGUS

G A R PROPHET
AMDAHL ERICA 431-465
S A 1117 HOMER 431 228

CONNEALY CONSENSUS 7229
EURA ELGA OF CONANGA 9109
SITZ UPWARD 307R
BAR R ANITA 7081
C R A BEXTOR 872 5205 608
G A R OBJECTIVE 1885
S A 650H HOMER 1117 911
S A 8210 ANCHOR 228 630

CW
+56
Marb
+0.80
RE
+0.46

CED	BW	WW	YW	SC	Milk	SW	SF	\$B
+11	+0.2	+72	+130	+0.49	+33	+82	+94	+150

BW: 83	Adj. WW: 722	WWR: 100	1-5 Star Rating • C/E: 3-5 Hfirs/1-2 Cows
C/E	Fleshing	Disposition	
4	5	2	

• 365 Adj. Wt: 1,202 lbs.

• Full brothers 085/093/9208

• These three full ET brothers are sure to catch your eye with their style and structural correctness. They certainly do not lack any performance. Keep all the heifers out of these stand out future herd sires.

• Their dam, Amdahl Erica 465 has an outstanding weaning ratio of 116 on her three natural calves. She is the dam of Amdahl's Rocketeer 636.



Fall Bull



LOT 10

Lot 11

AMDAHL JET BLACK 093

BD: 01/21/20 Reg No: 19799437 Tattoo: 093

CED	BW	WW	YW	SC	Milk	SW	SF	\$B
+6	+2.5	+84	+145	+0.33	+33	+92	+104	+149

ANGUS

CW +68 Marb +0.36 RE +0.93

BW: 82	Adj. WW: 864	WWR: 111	1-5 Star Rating • C/E: 3-5 Hfirs/1-2 Cows
C/E	Fleshing	Disposition	
3	5	4	



LOT 11

Lot 12

AMDAHL JET BLACK 085

BD: 01/17/20 Reg No: 19799434 Tattoo: 085

CED	BW	WW	YW	SC	Milk	SW	SF	\$B
+4	+2.1	+77	+136	+0.19	+30	+83	+98	+142

ANGUS

CW +60 Marb +0.61 RE +0.38

BW: 85	Adj. WW: 729	WWR: 100	1-5 Star Rating • C/E: 3-5 Hfirs/1-2 Cows
C/E	Fleshing	Disposition	
2	4	4	

These three full brothers are one of the greatest opportunities in the 2020 offering.



DAM OF LOTS 10, 11 AND 12: AMDAHL ERICA 431-465



MATERNAL BROTHER OF LOTS 10-12: AMDAHL'S ROCKETEER 636

Angus Bulls



*We plan to use
Amdahl Range Master 0104 very heavily
in our 2021 AI'ing program.*



Lot 13 AMDAHL RANGE MASTER 0104

BD: 01/28/20 Reg No: 19788313 Tattoo: 0104

HA COWBOY UP 5405	HA OUTSIDE 3008	CW
AMDAHL RANGE MASTER 830	HA BLACKCAP LADY 1602	+58
AMDAHL MISS BP 380-509	AMDAHL BLOCK PARTY 368	Marb
ANGUS 68	AMDAHL MISS HOMER 172-380	+0.57
G A R PROPHET	C R A BEXTOR 872 5205 608	RE
AMDAHL BLACKBIRD 148-460	G A R OBJECTIVE 1885	+0.59
D R BLACKBIRD 148	H A R B WINDY 702 JH	
	D R BLACKBIRD 5043	

CED	BW	WW	YW	SC	Milk	SW	SF	SB
+4	+2.9	+85	+152	+0.71	+25	+77	+91	+140

BW: 84	Adj. WW: 901	WWR: 123	1-5 Star Rating • C/E: 3-5 Hfns/1-2 Cows		
			C/E	Fleshing	Disposition
			3	5	5

• 0104 is in a class of his own earning a weaning ratio of 123 in a very competitive class of bulls. You will not find a longer, deeper and thicker herd bull in the country. He is certainly one of the very finest herd bull prospects that we have ever raised and we are very excited to use him AI in our operation. We look forward to seeing how he will change the landscape of his future herd. He ranks in the top 1% of the breed for WW and YW.

• His dam has earned a weaning ratio of 108 on her five calves.

Lot 14 AMDAHL MEGA BLACK 008

BD: 01/05/20 Reg No: 19788266 Tattoo: 008

HA COWBOY UP 5405	HA OUTSIDE 3008	CW
AMDAHL RANGE MASTER 830	HA BLACKCAP LADY 1602	+45
AMDAHL MISS BP 380-509	AMDAHL BLOCK PARTY 368	Marb
ANGUS 68	AMDAHL MISS HOMER 172-380	+0.02
HERBSTER LAUREL 466	S A V MERIT 0616	RE
AMDAHL QUEEN 127-708	LIMESTONE MAY 8195	+0.47
D R QUEEN 127	S A V FINAL ANSWER 0035	
	D R QUEEN 7036	

CED	BW	WW	YW	SC	Milk	SW	SF	SB
+7	+1.1	+73	+131	+1.45	+32	+80	+74	+94

BW: 80	Adj. WW: 846	WWR: 116	1-5 Star Rating • C/E: 3-5 Hfns/1-2 Cows		
			C/E	Fleshing	Disposition
			3	4	5

• 008 has been a standout since birth and is one of the very top bulls in the offering.

Lot 15 AMDAHL RANGE MASTER 0116

BD: 02/03/20 Reg No: 19788312 Tattoo: 0116

HA COWBOY UP 5405	HA OUTSIDE 3008	CW
AMDAHL RANGE MASTER 830	HA BLACKCAP LADY 1602	+37
AMDAHL MISS BP 380-509	AMDAHL BLOCK PARTY 368	Marb
	AMDAHL MISS HOMER 172-380	+0.49
S A V PURSUIT 0160	S A V PIONEER 7301	RE
AMDAHL ERICA 465-760	S A V ABIGALE 5650	+0.52
AMDAHL ERICA 431-465	G A R PROPHET	
	S A 1117 HOMER 431 228	

CED	BW	WW	YW	SC	Milk	SW	SF	SB
+7	+1.8	+68	+114	+1.15	+27	+70	+74	+118

BW: 77	Adj. WW: 818	WWR: 112	1-5 Star Rating • C/E: 3-5 Hfns/1-2 Cows		
			C/E	Fleshing	Disposition
			4	4	5

• Recommended for heifers. Here is a Range Master son who earned a weaning ratio of 112. 0116 has certain herd bull look and appearance.

Angus Bulls

Lot 16

AMDAHL COWBOY UP 006

BD: 01/02/20 Reg No: 19799471 Tattoo: 006

HA OUTSIDE 3008	KG SOLUTION 0018	CW
HA COWBOY UP 5405	HA EVER LADY 1575	+37
HA BLACKCAP LADY 1602	SITZ UPWARD 307R	Marb
ANGUS	HA BLACKCAP LADY 5515	+0.16
S A V FINAL ANSWER 0035	SITZ TRAVELER 8180	RE
D R LADY BEULAH 128	S A V EMULOUS 8145	+0.46
D R LADY BEULAH 7127	D R EMULATION 4730	
	D R LADY BEULAH 2728	

CED	BW	WW	YW	SC	Milk	SW	SF	SB
+10	+0.0	+65	+115	+0.90	+21	+64	+72	+87
1-5 Star Rating • C/E: 3-5 Hfhrs/1-2 Cows								
BW: 78		Adj. WW: 819		WWR: 106				
C/E	Fleshing	Disposition						
4	5	4						

- All full brothers 006/011/012/018
- Not very often can you find four full brothers with this kind of consistency, depth of body and tremendous weaning ratios.
- Their donor dam Lady Beulah 128 has an outstanding weaning ratio of 111 on her six natural calves.



LOT 16-19 DAM: D R LADY BEULAH 128

Lot 17

AMDAHL COWBOY UP 012

BD: 01/06/20 Reg No: 19799474 Tattoo: 012

CED	BW	WW	YW	SC	Milk	SW	SF	SB	
+10	+1.5	+63	+112	+0.98	+18	+53	+66	+93	
ANGUS									
CW		+32		Marb		+0.10		RE	+0.42
BW: 83		Adj. WW: 765		WWR: 99					
1-5 Star Rating • C/E: 3-5 Hfhrs/1-2 Cows									
C/E	Fleshing	Disposition							
3	4	4							

Lot 18

AMDAHL COWBOY UP 011

BD: 01/06/20 Reg No: 19799473 Tattoo: 011

CED	BW	WW	YW	SC	Milk	SW	SF	SB	
+10	+2.1	+63	+114	+0.98	+18	+50	+68	+95	
ANGUS									
CW		+32		Marb		+0.10		RE	+0.42
BW: 85		Adj. WW: 735		WWR: 95					
1-5 Star Rating • C/E: 3-5 Hfhrs/1-2 Cows									
C/E	Fleshing	Disposition							
3	4	4							

Lot 19

AMDAHL COWBOY UP 018

BD: 01/08/20 Reg No: 19799476 Tattoo: 018

CED	BW	WW	YW	SC	Milk	SW	SF	SB	
+10	+1.0	+59	+100	+0.05	+23	+61	+56	+84	
ANGUS									
CW		+24		Marb		+0.19		RE	+0.37
BW: 81		Adj. WW: 649		WWR: 84					
1-5 Star Rating • C/E: 3-5 Hfhrs/1-2 Cows									
C/E	Fleshing	Disposition							
4	3	4							



TJ and Alicia and family working cattle

Angus Bulls

Lots 21, 22 and 23 featured full brothers



**LOT
21**

**Lot
20**

AMDAHL PHOENIX 066

BD: 01/16/20 Reg No: 19798185 Tattoo: 066

G A R SURE FIRE G A R PHOENIX G A R PROPHET N744 ANGUS AMDAHL'S ROCKETEER 636 AMDAHL JD MISS ROCK 026-879 AMDAHL JD MISS ML 821 026	CONNEALY IN SURE 8524 CHAIR ROCK 5050 G A R 8086 G A R PROPHET G A R DAYBREAK 440 MUSGRAVE AVIATOR AMDAHL ERICA 431-465 O C C MISSING LINK 830M AMDAHL JD NIGHTWATCH 679-821
--	---

CW
+48
Marb
+1.07
RE
+0.56

CED	BW	WW	YW	SC	Milk	SW	SF	SB
+13	-0.7	+59	+117	+1.16	+34	+72	+93	+159

BW: 75	Adj. WW: 765	WWR: 105
---------------	---------------------	-----------------

1-5 Star Rating • C/E: 3-5 Hfns/1-2 Cows		
C/E	Fleshing	Disposition
5	4	4

• Recommended for heifers. 066 takes it to another level with his calving-ease, performance and off the charts beef value numbers and carcass data. He is out of the finest Rocketeer daughter to date.



**Lot
21**

AMDAHL PHOENIX 063

BD: 01/15/20 Reg No: 19820225 Tattoo: 063

G A R SURE FIRE G A R PHOENIX G A R PROPHET N744 ANGUS KOU PAL JUNE AU 797 PRA JUNE AU ONWARD 2239 PRA ONWARD VRD 9184	CONNEALY IN SURE 8524 CHAIR ROCK 5050 G A R 8086 G A R PROPHET G A R DAYBREAK 440 O C C JUNE AU 807J KOU PAL ELBA 187 SITZ ONWARD 495R PRA VRD 722 432
---	---

CW
+60
Marb
+0.80
RE
+0.54

CED	BW	WW	YW	SC	Milk	SW	SF	SB
+8	+3.4	+69	+126	+1.80	+31	+71	+100	+154

BW: 84	Adj. WW: 802	WWR: 103
---------------	---------------------	-----------------

1-5 Star Rating • C/E: 3-5 Hfns/1-2 Cows		
C/E	Fleshing	Disposition
2	4	4

• All full brothers 063/069/083
 • This is a tremendous opportunity to select a trio of full embryo brothers. Hard to find a set of full brothers like these that offer this kind of eye appeal, performance, structural correctness and rock solid carcass traits.
 • Their dam, PRA Juneau 2239 is a cow that we were excited to be able to flush. She offers exceptional eye appeal, length of body, excellent foot structure and loads of thickness.



**Lot
22**

AMDAHL PHOENIX 069

BD: 01/16/20 Reg No: 19820227 Tattoo: 069

CED	BW	WW	YW	SC	Milk	SW	SF	SB
+12	+1.5	+66	+122	+1.20	+29	+72	+93	+136

BW: 80	Adj. WW: 767	WWR: 99
---------------	---------------------	----------------

1-5 Star Rating • C/E: 3-5 Hfns/1-2 Cows		
C/E	Fleshing	Disposition
4	4	4

14 | Amdahl Angus & Hereford Annual Sale

**Lot
23**

AMDAHL PHOENIX 083

BD: 01/17/20 Reg No: 19820231 Tattoo: 083

CED	BW	WW	YW	SC	Milk	SW	SF	SB
+6	+3.7	+79	+137	+1.81	+24	+72	+96	+141

BW: 82	Adj. WW: 851	WWR: 110
---------------	---------------------	-----------------

1-5 Star Rating • C/E: 3-5 Hfns/1-2 Cows		
C/E	Fleshing	Disposition
2	4	4

Angus Bulls

Lot 24

AMDAHL PHOENIX 042

BD: 01/12/20 Reg No: 19798190 Tattoo: 042

G A R SURE FIRE
G A R PHOENIX
G A R PROPHET N744

S A V FINAL ANSWER 0035
D R LADY BEULAH 128
D R LADY BEULAH 7127

CONNEALY IN SURE 8524
CHAIR ROCK 5050 G A R 8086
G A R PROPHET
G A R DAYBREAK 440
SITZ TRAVELER 8180
S A V EMULOUS 8145
D R EMULATION 4730
D R LADY BEULAH 2728

CW
+55
Marb
+0.66
RE
+0.73

CED	BW	WW	YW	SC	Milk	SW	SF	SB
+9	+1.6	+75	+130	+1.47	+25	+75	+100	+152

BW: 91	Adj. WW: 812	WWR: 110
---------------	---------------------	-----------------

1-5 Star Rating • C/E: 3-5 Hfirs/1-2 Cows		
C/E	Fleshing	Disposition
2	4	4

- 042 earned a weaning ratio of 110 putting him at the top of his sire group.
- His donor dam Lady Beulah 128 has an outstanding weaning ratio of 111 on her six natural calves.



LOT 24



LOT 25 DAM: AMDAHL MISS UPDATE 616-5117



LOT 24 DAM: D R LADY BEULAH 128
DONOR DAM FOR LOTS 16-19

Lot 25

AMDAHL PREVAIL 060

BD: 01/15/20 Reg No: 19798187 Tattoo: 060

G A R SURE FIRE
G A R PHOENIX
G A R PROPHET N744

ANGUS
SK MR UPDATE 1
AMDAHL MISS UPDATE 616-5117
AMDAHL'S MISS EMBLAZON 616

CONNEALY IN SURE 8524
CHAIR ROCK 5050 G A R 8086
G A R PROPHET
G A R DAYBREAK 440
TOKACH UPDATE 9009
S K MISS TRAVEL LOG ELBA 17
P A R EMBLAZON 4522
P A R EMBLAZON 50

CW
+54
Marb
+0.63
RE
+0.82

CED	BW	WW	YW	SC	Milk	SW	SF	SB
+2	+2.3	+65	+116	+1.37	+18	+55	+99	+152

BW: 82	Adj. WW: 746	WWR: 102
---------------	---------------------	-----------------

1-5 Star Rating • C/E: 3-5 Hfirs/1-2 Cows		
C/E	Fleshing	Disposition
2	4	5

- Prevail 060 is out of the standout donor cow 5117 who records a weaning ratio of 102 on her first four calves. True herd bull potential here.



Lot 26

AMDAHL PHOENIX 040

BD: 01/12/20 Reg No: 19798191 Tattoo: 040

G A R SURE FIRE
G A R PHOENIX
G A R PROPHET N744

H A R B WINDY 702 JH
D R BLACKBIRD 120
D R BLACKBIRD 3779

CONNEALY IN SURE 8524
CHAIR ROCK 5050 G A R 8086
G A R PROPHET
G A R DAYBREAK 440
A A R REALLY WINDY 1205
H A R B BLACK LADY 073 JH
TRASK TRAVELER 623
D R BLACKBIRD 746

CW
+42
Marb
+0.72
RE
+0.47

CED	BW	WW	YW	SC	Milk	SW	SF	SB
+11	+0.4	+49	+88	+1.22	+27	+52	+78	+129

BW: 79	Adj. WW: 670	WWR: 92
---------------	---------------------	----------------

1-5 Star Rating • C/E: 3-5 Hfirs/1-2 Cows		
C/E	Fleshing	Disposition
5	4	4

- Recommended for heifers. 040 is out of a high producing Path-finder dam.

Angus Bulls



Lot 27 **AMDAHL ULTIMATE 055**
 BD: 01/14/20 Reg No: 19788287 Tattoo: 055

O C C LINEBRED 661L	O C C HOMER 650H	CW
AMDAHL'S ULTIMATE 802	O C C DIXIE ERICA 686J	+20
P A R ERIKA'S TRAVELER 52	P A R GLADIATOR 270	Marb
	P A R TRAVELING ADO	+0.20
AMDAHL'S ALL AMERICAN 324	MYTTY IN FOCUS	RE
AMDAHL MISS AVIATOR 471-899	D R QUEEN 127	+0.22
AMDAHL MISS BP 154-471	CB BLOCK PARTY 156	
	AMDAHL MISS HOMER62 2170-154	

CED	BW	WW	YW	SC	Milk	SW	SF	SB
+13	-1.2	+48	+82	+1.25	+23	+52	+63	+90

BW: 65	Adj. WW: 734	WWR: 100
---------------	---------------------	-----------------

1-5 Star Rating • C/E: 3-5 Hfirs/1-2 Cows		
C/E	Fleshing	Disposition
5	5	4

• Recommended for heifers. This 5 star, calving-ease bull offers thickness in a moderate frame and is sired by the highly proven Amdahl Ultimate 802.

Lot 28 **AMDAHL SOUTHERN CHARM 064**
 BD: 01/16/20 Reg No: 19799380 Tattoo: 064

SILVEIRAS CONVERSION 8064	BT CROSSOVER 758N	CW
BUBS SOUTHERN CHARM AA31	EXG SARAS DREAM S609 R3	+24
HICKORY HILL ERICA 009	CONNEALY STIMULUS 8419	Marb
	HICKORY HILL ERICA TA32	+0.51
O C C HOMER 650H	O C C FOCUS 813F	RE
AMDAHL MISS HOMER 172-380	O C C DIXIE ERICA 816B	+0.44
AMDAHL MISS PP 7155-172	JAUER PICTURE PERFECT 43 682	
	KSU MISS LEAD ON 7155	

CED	BW	WW	YW	SC	Milk	SW	SF	SB
+7	+1.6	+52	+91	+0.98	+28	+57	+63	+107

BW: 84	Adj. WW: 762	WWR: 104
---------------	---------------------	-----------------

1-5 Star Rating • C/E: 3-5 Hfirs/1-2 Cows		
C/E	Fleshing	Disposition
3	4	4

• Stout, powerful and a true standout in the pen best describes 064. He earned a weaning ratio of 104.
 • His dam, Amdahl Miss Homer 380 has worked her way to Pathfinder status and has earned a weaning ratio of 105 on her six calves.



LOT 28 DAM: AMDAHL MISS HOMER 172-380



Lot 29 **AMDAHL SOUTHERN CHARM 078**
 BD: 01/17/20 Reg No: 19799410 Tattoo: 078

SILVEIRAS CONVERSION 8064	BT CROSSOVER 758N	CW
BUBS SOUTHERN CHARM AA31	EXG SARAS DREAM S609 R3	+47
HICKORY HILL ERICA 009	CONNEALY STIMULUS 8419	Marb
ANGUS 68	HICKORY HILL ERICA TA32	+0.61
S A V FINAL ANSWER 0035	SITZ TRAVELER 8180	RE
D R BLACKBIRD 133	S A V EMULOUS 8145	+0.60
D R BLACKBIRD 2511	O C C NEUTON 713	
	D R RITA TRAVELER 0631	

CED	BW	WW	YW	SC	Milk	SW	SF	SB
+2	+4.9	+75	+123	+1.55	+28	+74	+75	+124

BW: 87	Adj. WW: 741	WWR: 101
---------------	---------------------	-----------------

1-5 Star Rating • C/E: 3-5 Hfirs/1-2 Cows		
C/E	Fleshing	Disposition
1	4	5

• 078 offers true herd bull potential and is backed by the mother of Amdahl's Heavy Duty 323. It won't be hard to find him in the pen.

Angus Bulls

Lot 30 **AMDAHL LANDMARK 029**

AMDAHL'S BLOCK PARTY 557	CB BLOCK PARTY 156	CW
AMDAHL LANDMARK 712	D R QUEEN 127	+69
AMDAHL MISS ULTIMATE747W-103	AMDAHL'S ULTIMATE 802	Marb
ANGUS MILL BAR HICKOK 7242	O C C MISS NEWSLINE 747W	+0.29
AMDAHL ERICA HICKOK 104-544	CONNEALY CONSENSUS 7229	RE
D R ERICA 104	MILL BAR BEMINDFUL MAID 6304	+0.52
	MYTTY IN FOCUS	
	D R ERICA 967	

CED	BW	WW	YW	SC	Milk	SW	SF	\$B
+4	+2.8	+89	+147	+1.57	+21	+84	+106	+145
BW: 89 Adj. WW: 753 WWR: 100								
1-5 Star Rating • C/E: 3-5 Hfhrs/1-2 Cows								
			C/E	Fleshing	Disposition			
			2	4	5			

- Full brothers 029 and 068
- Two power packed full brothers sired by Amdahl Landmark 712 will add depth of rib, weaning and yearling performance along with some of the very best cows to run in the Amdahl program.
- Their donor dam, Erica Hickok 544 has consistently produced depth of body and pure power.



LOT 30 & 31 SIRE: AMDAHL LANDMARK 712

Lot 31 **AMDAHL LANDMARK 068**

BD: 01/16/20	Reg No: 19788290	Tattoo: 068						
CED	BW	WW	YW	SC	Milk	SW	SF	\$B
+4	+2.5	+69	+120	+2.05	+24	+66	+96	+123
BW: 83 Adj. WW: 719 WWR: 93								
1-5 Star Rating • C/E: 3-5 Hfhrs/1-2 Cows								
			C/E	Fleshing	Disposition			
			2	4	4			



LOT 30 & 31 DAM: AMDAHL ERICA HICKOK 104-544

Lot 32 **AMDAHL HEAVY DUTY 020**

BD: 01/08/20	Reg No: 19788271	Tattoo: 020						
W H S LIMELIGHT 64V	MYTTY IN FOCUS	CW						
AMDAHL'S HEAVY DUTY 323	W H S PREDESTINED LASS 77T	+38						
D R BLACKBIRD 133	S A V FINAL ANSWER 0035	Marb						
	D R BLACKBIRD 2511	+0.64						
PAHR YETI B5	BASIN PAYWEIGHT 1682	RE						
AMDAHL MISS LADY 6129-864	PAHR RITA Q28 OF 0151 9Q20	+0.50						
AMDAHL MISS LADY 157-6129	SK MR UPDATE 1							
	SK MISS STRATEGY LADY 22							
CED	BW	WW	YW	SC	Milk	SW	SF	\$B
+5	+2.9	+70	+120	+0.63	+23	+64	+79	+131
BW: 80 Adj. WW: 760 WWR: 104								
1-5 Star Rating • C/E: 3-5 Hfhrs/1-2 Cows								
			C/E	Fleshing	Disposition			
			3	5	4			

- 020 is thick and deep-bodied with great performance.



Lot 33 **AMDAHL HEAVY DUTY 036**

BD: 01/11/20	Reg No: 19788281	Tattoo: 036						
W H S LIMELIGHT 64V	MYTTY IN FOCUS	CW						
AMDAHL'S HEAVY DUTY 323	W H S PREDESTINED LASS 77T	+40						
D R BLACKBIRD 133	S A V FINAL ANSWER 0035	Marb						
	D R BLACKBIRD 2511	+0.24						
S A V RINGMASTER 1184	S A V 707 RITO 9969	RE						
AMDAHL MISS RING 025-856	S A V EMBLYNETTE 5416	+0.56						
AMDAHL'S MISS 3130 025	O C C LINEBRED 661L							
	K S U MISS 616 3130							
CED	BW	WW	YW	SC	Milk	SW	SF	\$B
+10	+0.2	+66	+110	+0.90	+22	+66	+87	+124
BW: 65 Adj. WW: 758 WWR: 104								
1-5 Star Rating • C/E: 3-5 Hfhrs/1-2 Cows								
			C/E	Fleshing	Disposition			
			5	5	4			

- Recommended for heifers. This bull is one of the most balanced Heavy Duty 323 sons in the offering.

Lot 34 **AMDAHL HEAVY DUTY 004**

BD: 12/30/19	Reg No: 19788265	Tattoo: 004						
W H S LIMELIGHT 64V	MYTTY IN FOCUS	CW						
AMDAHL'S HEAVY DUTY 323	W H S PREDESTINED LASS 77T	+33						
D R BLACKBIRD 133	S A V FINAL ANSWER 0035	Marb						
	D R BLACKBIRD 2511	+0.44						
P A R HOMER 62	O C C HOMER 650H	RE						
AMDAHL MISS HOMER62 2170-154	P A R AMBUSH LASSIE 1DA	+0.33						
K S U MISS ALLIANCE 2170	SITZ ALLIANCE 6595							
	MISS LUCYS BOY K 8188							
CED	BW	WW	YW	SC	Milk	SW	SF	\$B
+3	+2.9	+60	+105	+1.43	+27	+57	+78	+119
BW: 86 Adj. WW: 758 WWR: 104								
1-5 Star Rating • C/E: 3-5 Hfhrs/1-2 Cows								
			C/E	Fleshing	Disposition			
			2	4	4			

- 004 is a true herd bull prospect out of a stand out Homer daughter.

Angus Bulls

Lot 35 AMDAHL HEAVY DUTY 001

BD: 12/25/19 Reg No: 19788263 Tattoo: 001

W H S LIMELIGHT 64V AMDAHL'S HEAVY DUTY 323 D R BLACKBIRD 133	MYTTY IN FOCUS W H S PREDESTINED LASS 77T S A V FINAL ANSWER 0035 D R BLACKBIRD 2511 S A V BISMARCK 5682 THOMAS RUBY ERICA 8293 AMDAHL'S MODERATOR 829 ROTH ANNIE 2028	CW +36 Marb +0.54 RE +0.44
---	---	---

CED	BW	WW	YW	SC	Milk	SW	SF	SB
+6	+1.5	+63	+101	+1.49	+22	+61	+83	+128

BW: 82	Adj. WW: 721	WWR: 98
1-5 Star Rating • C/E: 3-5 Hfirs/1-2 Cows		
C/E	Fleshing	Disposition
3	4	4

- 001 is a rugged herd bull prospect that offers depth of body and solid performance.
- His dam has earned Pathfinder status.

Lot 36 AMDAHL HEAVY DUTY 033

BD: 01/10/20 Reg No: 19788279 Tattoo: 033

W H S LIMELIGHT 64V AMDAHL'S HEAVY DUTY 323 D R BLACKBIRD 133	MYTTY IN FOCUS W H S PREDESTINED LASS 77T S A V FINAL ANSWER 0035 D R BLACKBIRD 2511 O C C KANGA 886K O C C DIXIE ERICA 867K O C C HOMER 650H P A R TRAVELING 560	CW +34 Marb +0.46 RE +0.48
---	--	---

CED	BW	WW	YW	SC	Milk	SW	SF	SB
+6	+1.6	+55	+95	+0.81	+21	+50	+73	+117

BW: 81	Adj. WW: 680	WWR: 93
1-5 Star Rating • C/E: 3-5 Hfirs/1-2 Cows		
C/E	Fleshing	Disposition
3	5	5

- 033's dam has earned a weaning ratio of 103 on her nine calves. Keep the daughters out of this one.

Lot 38 AMDAHL ROCKETEER 0118

BD: 01/04/20 Reg No: 19788314 Tattoo: 0118

MUSGRAVE AVIATOR AMDAHL'S ROCKETEER 636 AMDAHL ERICA 431-465	KOUPALS B&B IDENTITY MCATL FOREVER LADY 1429-138 G A R PROPHET S A 1117 HOMER 431 228 SA 830M MISSING LINK 652 325 S A 841 ANCHOR 620 075 S A V FINAL ANSWER 0035 D R BLACKBIRD 2511	CW +37 Marb +0.39 RE +0.49
--	---	---

CED	BW	WW	YW	SC	Milk	SW	SF	SB
+4	+1.5	+48	+88	+0.66	+29	+51	+78	+117

BW: 85	Adj. WW: 666	WWR: 91
1-5 Star Rating • C/E: 3-5 Hfirs/1-2 Cows		
C/E	Fleshing	Disposition
2	5	4

- 0118 is a thick, rugged Rocketeer son backed by a Pathfinder dam.



LOT 38 DAM: AMDAHL'S BLACKBIRD 133-410

Lot 37 AMDAHL ROCKETEER 098

BD: 01/24/20 Reg No: 19788301 Tattoo: 098

MUSGRAVE AVIATOR AMDAHL'S ROCKETEER 636 AMDAHL ERICA 431-465	KOUPALS B&B IDENTITY MCATL FOREVER LADY 1429-138 G A R PROPHET S A 1117 HOMER 431 228 S A V MERIT 0616 LIMESTONE MAY 8195 P A R EMBLAZON 4522 P A R EMBLAZON 50	CW +45 Marb +0.44 RE +0.52
--	--	---

CED	BW	WW	YW	SC	Milk	SW	SF	SB
+3	+2.2	+63	+100	+0.83	+33	+78	+83	+122

BW: 87	Adj. WW: 735	WWR: 100
1-5 Star Rating • C/E: 3-5 Hfirs/1-2 Cows		
C/E	Fleshing	Disposition
2	4	5

- 098 is one of the top Rocketeer sons to date. He offers great natural thickness and a true herd bull look. His dam has earned a weaning ratio of 106 on her three calves.



LOT 37 FULL BROTHER



LOT 38

Lot 39 AMDAHL ROCKETEER 0157

BD: 02/26/20 Reg No: 19788339 Tattoo: 0157

MUSGRAVE AVIATOR AMDAHL'S ROCKETEER 636 AMDAHL ERICA 431-465	KOUPALS B&B IDENTITY MCATL FOREVER LADY 1429-138 G A R PROPHET S A 1117 HOMER 431 228 W H S LIMELIGHT 64V D R BLACKBIRD 133 G A R TRAVELER 1489 P A R TRAVELING WESTWIND D30	CW +40 Marb +0.63 RE +0.65
--	---	---

CED	BW	WW	YW	SC	Milk	SW	SF	SB
+7	+0.8	+68	+111	+0.65	+25	+72	+86	+140

BW: 81	Adj. WW: 798	WWR: 109
1-5 Star Rating • C/E: 3-5 Hfirs/1-2 Cows		
C/E	Fleshing	Disposition
3	5	5

- Here is a great combination of Rocketeer and Heavy Duty. 0157 earned a weaning ratio of 112.

Angus Bulls

Lot 40 **AMDAHL ROCKETEER 0160**
 BD: 02/28/20 Reg No: 19788341 Tattoo: 0160

MUSGRAVE AVIATOR	KOUPLS B&B IDENTITY	CW
AMDAHL'S ROCKETEER 636	MCATL FOREVER LADY 1429-138	+42
AMDAHL ERICA 431-465	G A R PROPHET	Marb
	S A 1117 HOMER 431 228	+0.53
AMDAHL'S EMBAZON 0005	S A 854E EMBLAZON 419 625	RE
AMDAHL EMMA 144-445	S A 1131 HERCULES 326 461	+0.48
D R EMMA 144	D R BANDO 854	
	D R EMMA 803	

CED	BW	WW	YW	SC	Milk	SW	SF	SB
+2	+1.8	+61	+102	+0.61	+28	+65	+85	+130

1-5 Star Rating • C/E: 3-5 Hfns/1-2 Cows		
BW: 84	Adj. WW: 761	WWR: 104
C/E	Fleshing	Disposition
3	4	4

• 0160 earned a weaning ratio of 104 and is an excellent combination of Emblazon and Rocketeer.

Lot 41 **AMDAHL ROCKETEER 0150**
 BD: 02/20/20 Reg No: 19788334 Tattoo: 0150

MUSGRAVE AVIATOR	KOUPLS B&B IDENTITY	CW
AMDAHL'S ROCKETEER 636	MCATL FOREVER LADY 1429-138	+32
AMDAHL ERICA 431-465	G A R PROPHET	Marb
	S A 1117 HOMER 431 228	+0.45
AMDAHL'S MVP 040	O C C LINEBRED 661L	RE
AMDAHL MISS DIXIE 060-487	P A R HEAVY QUEEN RITO 531	+0.47
AMDAHL'S MISS DIXIE 2138 060	P A R HOMER 62	
	K S U MISS ALLIANCE 2138	

CED	BW	WW	YW	SC	Milk	SW	SF	SB
+7	+0.8	+55	+95	+0.61	+32	+66	+73	+114

1-5 Star Rating • C/E: 3-5 Hfns/1-2 Cows		
BW: 81	Adj. WW: 792	WWR: 108
C/E	Fleshing	Disposition
4	5	4

• This is certainly Rocketeers finest sire group to date. 0150 earned a weaning ratio of 108.

Lot 42 **AMDAHL ALL AMERICAN 021**
 BD: 01/09/20 Reg No: 19788272 Tattoo: 021

MYTTY IN FOCUS	S A F FOCUS OF E R	CW
AMDAHL'S ALL AMERICAN 324	MYTTY COUNTESS 906	+33
D R QUEEN 127	S A V FINAL ANSWER 0035	Marb
	D R QUEEN 7036	+0.52
BVC AVIATOR 4007	MUSGRAVE AVIATOR	RE
AMDAHL MISS PRIDE 5159-881	BVC ROGUE PRIDE CC7 228	+0.45
AMDAHL MISS PRIDE 5043-5159	BUSHS CONTAGIOUS 669	
	R K MISS DESIGN PRIDE 7	

CED	BW	WW	YW	SC	Milk	SW	SF	SB
+10	+0.2	+49	+90	+1.29	+32	+58	+76	+117

1-5 Star Rating • C/E: 3-5 Hfns/1-2 Cows		
BW: 77	Adj. WW: 724	WWR: 99
C/E	Fleshing	Disposition
5	5	4

• Recommended for heifers. Stylish and deep-bodied bull here.

Lot 43 **AMDAHL ALL AMERICAN 067**
 BD: 01/16/20 Reg No: 19788289 Tattoo: 067

MYTTY IN FOCUS	S A F FOCUS OF E R	CW
AMDAHL'S ALL AMERICAN 324	MYTTY COUNTESS 906	+32
D R QUEEN 127	S A V FINAL ANSWER 0035	Marb
	D R QUEEN 7036	+0.20
S A V RINGMASTER 1184	S A V 707 RITO 9969	RE
AMDAHL DIXIE RING 828-860	S A V EMBLYNETTE 5416	+0.46
AMDAHL DIXIE MODERATOR 828	JAUER MODERATOR 297 523	
	JAUER HOMER 550 109	

CED	BW	WW	YW	SC	Milk	SW	SF	SB
+11	+0.2	+52	+88	+1.14	+23	+54	+71	+101

1-5 Star Rating • C/E: 3-5 Hfns/1-2 Cows		
BW: 66	Adj. WW: 705	WWR: 96
C/E	Fleshing	Disposition
5	5	4

• Recommended for heifers. 067 is a naturally thick All American son that is backed by real world cow power.

Lot 44 **AMDAHL WEIGH UP 074**
 BD: 01/16/20 Reg No: 19788293 Tattoo: 074

PLATTEMERE WEIGH UP K360	SITZ UPWARD 307R	CW
CONNEALY WEIGH UP 9109 5147	BARBARA OF PLATTEMERE 337	+40
EURA ELGA OF CONANGA 9109	S A V BISMARCK 5682	Marb
	EURA CAL OF CONANGA 568	+0.59
HERBSTER LAUREL 466	S A V MERIT 0616	RE
AMDAHL QUEEN 404-8139	LIMESTONE MAY 8195	+0.37
AMDAHL QUEEN 709-404	G A R PROPHET	
	AMDAHL HOMER QUEEN 531-709	

CED	BW	WW	YW	SC	Milk	SW	SF	SB
+12	+0.9	+60	+108	+0.61	+32	+68	+80	+124

1-5 Star Rating • C/E: 3-5 Hfns/1-2 Cows		
BW: 79	Adj. WW: 750	WWR: 102
C/E	Fleshing	Disposition
4	4	3

• Recommended for heifers. 074 earned a weaning ratio of 103 and is backed by the mother of Black Granite and one of our top donor cows, Amdahl Queen 404.

Lot 45 **AMDAHL WEIGH UP 0113**
 BD: 02/01/20 Reg No: 19792266 Tattoo: 0113

PLATTEMERE WEIGH UP K360	SITZ UPWARD 307R	CW
CONNEALY WEIGH UP 9109 5147	BARBARA OF PLATTEMERE 337	+41
EURA ELGA OF CONANGA 9109	S A V BISMARCK 5682	Marb
	EURA CAL OF CONANGA 568	+0.43
CONNEALY ARMORY	CONNEALY ARSENAL 2174	RE
AMDAHL JD BLACKBIRD 803	EBBA OF CONANGA 808	+0.37
D R BLACKBIRD 133	S A V FINAL ANSWER 0035	
	D R BLACKBIRD 2511	

CED	BW	WW	YW	SC	Milk	SW	SF	SB
+14	-1.0	+70	+125	+0.89	+31	+78	+80	+120

1-5 Star Rating • C/E: 3-5 Hfns/1-2 Cows		
BW: 63	Adj. WW: 796	WWR: 109
C/E	Fleshing	Disposition
5	4	4

• Recommended for heifers. 0113 is a big spread Weigh Up son that ranks high in all the important EPD categories. He is certainly one of the finest heifer bulls in the offering. He earned a weaning ratio of 109.

Angus Bulls



Lot 46 **AMDAHL WEIGH UP 0141**
 BD: 02/12/20 Reg No: 19790143 Tattoo: 0141

PLATTEMERE WEIGH UP K360	SITZ UPWARD 307R	CW
CONNEALY WEIGH UP 9109 5147	BARBARA OF PLATTEMERE 337	+37
EURA ELGA OF CONANGA 9109	S A V BISMARCK 5682	Marb
	EURA CAL OF CONANGA 568	+0.40
AMDAHL'S ROCKETEER 636	MUSGRAVE AVIATOR	RE
AMDAHL MISS MAY 1037-8133	AMDAHL ERICA 431-465	+0.55
SK MISS PARTY MAY 11	CB BLOCK PARTY 156	
	S T MISS COMMAND MAY 15	

CED	BW	WW	YW	SC	Milk	SW	SF	SB
+7	+1.9	+61	+106	+0.90	+24	+60	+79	+121

BW: 75 **Adj. WW: 761** **WWR: 100**

1-5 Star Rating • C/E: 3-5 Hfirs/1-2 Cows		
C/E	Fleshing	Disposition
4	4	3

• Recommended for heifers. 0141 offers great length and is stacked with the finest sires in the breed for making females.



Lot 47 **AMDAHL PROPHET 096**
 BD: 01/23/20 Reg No: 19798055 Tattoo: 096

C R A BEXTOR 872 5205 608	B A R EXT TRAVELER 205	CW
G A R PROPHET	CRA LADY JAYE 608 498 S EASY	+29
G A R OBJECTIVE 1885	S S OBJECTIVE T510 OT26	Marb
	G A R 1407 NEW DESIGN 2232	+0.91
AMDAHL'S ALL AMERICAN 324	MYTTY IN FOCUS	RE
AMDAHL MISS LADY 597-8104	D R QUEEN 127	+0.25
S MISS B P LADY 20	MOHNEN BRUSHPOPPER 225	
	S K MISS TIME LADY 16A	

CED	BW	WW	YW	SC	Milk	SW	SF	SB
+13	-0.1	+60	+106	+0.76	+33	+72	+58	+115

BW: 70 **Adj. WW: 768** **WWR: 105**

1-5 Star Rating • C/E: 3-5 Hfirs/1-2 Cows		
C/E	Fleshing	Disposition
5	4	3

• Recommended for heifers. 096 is out of a standout All American daughter that has a great future ahead of her.



Lot 48 **AMDAHL RANGE MASTER 039**
 BD: 01/11/20 Reg No: 19788282 Tattoo: 039

HA COWBOY UP 5405	HA OUTSIDE 3008	CW
AMDAHL RANGE MASTER 830	HA BLACKCAP LADY 1602	+36
AMDAHL MISS BP 380-509	AMDAHL BLOCK PARTY 368	Marb
	AMDAHL MISS HOMER 172-380	+0.57
BVC AVIATOR 4007	MUSGRAVE AVIATOR	RE
AMDAHL MISS AVIATOR 471-699	BVC ROGUE PRIDE CC7 228	+0.52
AMDAHL MISS BP 154-471	CB BLOCK PARTY 156	
	AMDAHL MISS HOMER 62 2170-154	

CED	BW	WW	YW	SC	Milk	SW	SF	SB
+5	+2.8	+62	+110	+1.22	+21	+54	+75	+125

BW: 79 **Adj. WW: 778** **WWR: 100**

1-5 Star Rating • C/E: 3-5 Hfirs/1-2 Cows		
C/E	Fleshing	Disposition
3	5	4

• 039 is as thick and well put together as any of the Range Master sons in the offering. He is loaded with an Amdahl pedigree.



*Gerald Julson with Tim.
He has been a long time customer and family friend.*

Angus Bulls

Lot 49

AMDAHL WEIGH UP 088

BD: 01/19/20 Reg No: 19790142 Tattoo: 088

PLATTEMERE WEIGH UP K360	SITZ UPWARD 307R	CW
CONNEALY WEIGH UP 9109 5147	BARBARA OF PLATTEMERE 337	+44
EURA ELGA OF CONANGA 9109	S A V BISMARCK 5682	Marb
	EURA CAL OF CONANGA 568	+0.39
AMDAHL'S ALL AMERICAN 324	MYTTY IN FOCUS	RE
AMDAHL MISS JUDY 5138-884	D R QUEEN 127	+0.61
AMDAHL MISS JUDY 5103-5138	MOHNEN WOLF CREEK 623	
	R K MISS BANDO JUDY 23	

CED	BW	WW	YW	SC	Milk	SW	SF	SB
+12	+0.8	+59	+105	+1.36	+30	+64	+82	+122

BW: 74	Adj. WW: 721	WWR: 98	1-5 Star Rating • C/E: 3-5 Hrs/1-2 Cows
			C/E Flething Disposition
			5 4 4

• Recommended for heifers. 088 is an excellent combination of CED, performance and loads of cow power.



2 Year Old Angus Bulls

Lot 50

AMDAHL ROCKETEER 9167

BD: 03/18/19 Reg No: 19494754 Tattoo: 9167

MUSGRAVE AVIATOR	KOUPALS B&B IDENTITY	CW
AMDAHL'S ROCKETEER 636	MCATL FOREVER LADY 1429-138	+37
AMDAHL ERICA 431-465	G A R PROPHET	Marb
ANGUS	S A 1117 HOMER 431 228	+0.18
CROOK MT LINE WINDY 2870	CROOK MT REALLY WINDY 141	RE
AMDAHL MISS WINDY 459-621	REVOLUTION 223 OF CROOK MT	+0.70
AMDAHL MISS LINK 515-459	SA 652 MISSING LINK 848 620	
	ST MISS HOT FLASH BLACKBIRD	

CED	BW	WW	YW	SC	Milk	SW	SF	SB
+8	+0.6	+47	+87	+0.76	+26	+49	+81	+114

BW: 79	Adj. WW: 723	WWR: 104	1-5 Star Rating • C/E: 3-5 Hrs/1-2 Cows
			C/E Flething Disposition
			4 3 4

• 365 Adj. Wt: 1,217 lbs.
• 9167 earned a weaning ratio of 104 and a yearling ratio of 105.

Lot 51

AMDAHL ROCKETEER 9178

BD: 04/06/19 Reg No: 19494761 Tattoo: 9178

MUSGRAVE AVIATOR	KOUPALS B&B IDENTITY	CW
AMDAHL'S ROCKETEER 636	MCATL FOREVER LADY 1429-138	+41
AMDAHL ERICA 431-465	G A R PROPHET	Marb
ANGUS	S A 1117 HOMER 431 228	+0.55
AKERS MISSING LINK 9603	O C C MISSING LINK 830M	RE
PAR MITCHELL'S LINK 303	O C C BLACKBIRD 736K	+0.50
P A R MITCHELL'S BEXTER 80	O C C MITCHELL 831M	
	PAR QUEEN DOLLY 575	

CED	BW	WW	YW	SC	Milk	SW	SF	SB
-2	+3.8	+62	+108	-0.14	+22	+55	+79	+125

BW: 90	Adj. WW: 764	WWR: 110	1-5 Star Rating • C/E: 3-5 Hrs/1-2 Cows
			C/E Flething Disposition
			1 3 3

• 365 Adj. Wt: 1,230 lbs.
• 9178 is the top weaning weight bull in the two year old group.

Lot 52

AMDAHL BROKEN BOW 9160

BD: 03/09/19 Reg No: 19494749 Tattoo: 9160

KM BROKEN BOW 002	SUMMITCREST COMPLETE 1P55	CW
MILLARS BROKEN BOW 799	SUMMITCREST PRINCESS OP12	+44
MILLARS ERICA 530	TOMBSTONE 050	Marb
ANGUS	MILLARS ERICA 022	+0.68
DEER VALLEY ALL IN	A A R TEN X 7008 S A	RE
AMDAHL ERICA ALL-IN 373-665	DEER VALLEY RITA 0274	+0.55
AMDAHL ERICA TJ 8104-373	CB BLOCK PARTY 156	
	SA 831M MITCHELL 8104 430	

CED	BW	WW	YW	SC	Milk	SW	SF	SB
+14	-3.1	+57	+112	+1.01	+29	+66	+89	+140

BW: 57	Adj. WW: 583	WWR: 90	1-5 Star Rating • C/E: 3-5 Hrs/1-2 Cows
			C/E Flething Disposition
			5 5 4

• 365 Adj. Wt: 1,057 lbs.
• 9160 is the highest rated, calving-ease bull in the offering and is extremely deep-ribbed.
• This very muscular Rocketeer son would work on heifers and cows and has a loaded Amdahl pedigree.



2 Year Old Angus Bulls

Lot 53

AMDAHL ROCKETEER 9162

BD: 03/12/19 Reg No: 19494750 Tattoo: 9162

MUSGRAVE AVIATOR	KOUPLS B&B IDENTITY	CW
AMDAHL'S ROCKETEER 636	MCATL FOREVER LADY 1429-138	+25
AMDAHL ERICA 431-465	G A R PROPHET	Marb
ANGUS	S A 1117 HOMER 431 228	+0.55
MOGCK FRONTMAN 1141	KESSLERS FRONTMAN ROOT	RE
AMDAHL ERICA FM 337-608	MOGCK ENTELLO 1446	+0.56
AMDAHL'S ERICA 147DK-337	W H S LIMELIGHT 64V	
	D R ERICA 147	

CED	BW	WW	YW	SC	Milk	SW	SF	SB
+9	-1.2	+51	+82	+1.60	+25	+61	+67	+113

BW: 74	Adj. WW: 654	WWR: 94	1-5 Star Rating • C/E: 3-5 Hfvs/1-2 Cows
C/E	Fleshing	Disposition	
4	4	4	

- 365 Adj. Wt: 1,150 lbs.
- 9162 is a big and stout Rocketeer son that could be used on heifers.



Lot 54

AMDAHL SUPER DUTY 9189

BD: 04/26/19 Reg No: 19499680 Tattoo: 9189

GMAR SUPER DUTY C279	R B ACTIVE DUTY 010	CW
GMAR SUPER DUTY E094	GMAR IMAGE MAKER X306	+26
GMAR HOOVER DAM Y407	HOOVER DAM	Marb
ANGUS	GMAR TRAVELER 7174	+0.44
CB BLOCK PARTY 156	WERNER WAR PARTY 2417	RE
AMDAHL MISS BLK PARTY154-554	CB 965 MAINLINE	+0.63
AMDAHL MISS HOMER62 2170-154	P A R HOMER 62	
	K S U MISS ALLIANCE 2170	

CED	BW	WW	YW	SC	Milk	SW	SF	SB
+1	+2.5	+55	+97	+1.09	+24	+48	+61	+105

BW: 82	Adj. WW: 692	WWR: 106	1-5 Star Rating • C/E: 3-5 Hfvs/1-2 Cows
C/E	Fleshing	Disposition	
2	4	4	

- 365 Adj. Wt: 1,121 lbs.
- This stylish 2 year old bull earned a weaning ratio of 106 and a yearling ratio of 103.

Lot 55

AMDAHL PRIMETIME 959

BD: 01/19/19 Reg No: 19501052 Tattoo: 959

VERMILION SIRLOIN	TC FRANKLIN 619	CW
HA PRIME CUT 4493	VERMILION LASS 8482	+24
HA MISS BLACKCAP 9127	HA PROGRAM 5652	Marb
ANGUS	H A MISS BLACKCAP 1250	+0.47
CONNEALY BLACK GRANITE	CONNEALY CONSENSUS 7229	RE
AMDAHL'S MISS BLAZE 041-733	EURA ELGA OF CONANGA 9109	+0.62
AMDAHL'S MISS BLAZE 272 041	O C C LINEBRED 661L	
	P A R HEAVY BLAZE 272	

CED	BW	WW	YW	SC	Milk	SW	SF	SB
+14	+0.8	+50	+88	+1.04	+28	+59	+68	+113

BW: 75	Adj. WW: 639	WWR: 86	1-5 Star Rating • C/E: 3-5 Hfvs/1-2 Cows
C/E	Fleshing	Disposition	
5	5	5	

- 365 Adj. Wt: 1,055 lbs.
- Keep all the daughters out of this slam dunk, calving-ease Prime Cut son. He comes from one of the finest cow families in the herd.

Lot 57

AMDAHL ENHANCE 924

BD: 01/11/19 Reg No: 19501095 Tattoo: 924

SYDGEN EXCEED 3223	SYDGEN GOOGOL	CW
SYDGEN ENHANCE	SYDGEN FOREVER LADY 1255	+35
SYDGEN RITA 2618	SYDGEN LIBERTY GA 8627	Marb
ANGUS	FOX RUN RITA 9308	+0.68
O C C HOMER 650H	O C C FOCUS 813F	RE
AMDAHL MISS HOMER H 3198-136	O C C DIXIE ERICA 816B	+0.38
K S U MISS 602C 3198	BASIN MAX 602C	
	MISS BANDO K 8125	

CED	BW	WW	YW	SC	Milk	SW	SF	SB
+10	+0.2	+45	+85	+0.60	+26	+51	+86	+138

BW: 72	Adj. WW: 691	WWR: 93	1-5 Star Rating • C/E: 3-5 Hfvs/1-2 Cows
C/E	Fleshing	Disposition	
5	3	4	

- 365 Adj. Wt: 1,025 lbs.
- This Enhance son offers exceptional calving-ease with solid performance.

Lot 56

AMDAHL LANDMARK 985

BD: 01/25/19 Reg No: 19493987 Tattoo: 985

AMDAHL'S BLOCK PARTY 557	CB BLOCK PARTY 156	CW
AMDAHL LANDMARK 712	D R QUEEN 127	+33
AMDAHL MISS ULTIMATE747W-103	AMDAHL'S ULTIMATE 802	Marb
ANGUS	O C C MISS NEWSLINE 747W	+0.46
BVC AVIATOR 4007	MUSGRAVE AVIATOR	RE
AMDAHL MISS AVIATOR471-699	BVC ROGUE PRIDE CC7 228	+0.24
AMDAHL MISS BP 154-471	CB BLOCK PARTY 156	
	AMDAHL MISS HOMER62 2170-154	

CED	BW	WW	YW	SC	Milk	SW	SF	SB
+11	-0.6	+51	+90	+1.60	+22	+54	+68	+107

BW: 75	Adj. WW: 647	WWR: 93	1-5 Star Rating • C/E: 3-5 Hfvs/1-2 Cows
C/E	Fleshing	Disposition	
5	5	4	

- 365 Adj. Wt: 1,101 lbs.
- This deep-ribbed Landmark son offers exceptional spread in his EPD profile along with a loaded Amdahl pedigree.



LOT 56 SIRE: AMDAHL LANDMARK 712

2 Year Old Angus Bulls

Lot 58

AMDAHL TREASURE 9150

BD: 03/03/19 Reg No: 19517207 Tattoo: 9150

MGR TREASURE	V A R DISCOVERY 2240	CW
CONNEALY TREASURE 0369	SIH IMPRESSION OF 6108 1614	+44
JMC HIPPIE EXEC 0369 45121	CONNEALY MENTOR 7374	Marb
ANGUS AMDAHL'S HEAVY DUTY 323	JMC HIPPIES BULLSEYE 45121 65	+0.97
AMDAHL MISS HEAVY 581-726	W H S LIMELIGHT 64V	RE
AMDAHL JD MISS BP 026-581	D R BLACKBIRD 133	+0.53
	CB BLOCK PARTY 156	
	AMDAHL JD MISS ML 821 026	

CED	BW	WW	YW	SC	Milk	SW	SF	\$B
+13	-1.1	+58	+104	+1.81	+23	+62	+85	+149

BW: 68	Adj. WW: 664	WWR: 96
1-5 Star Rating • C/E: 3-5 Hfhrs/1-2 Cows		
C/E	Fleshing	Disposition
5	3	4

• 365 Adj. Wt: 1,133 lbs.
 • 9150 is the biggest spread 2 year old bull in the offering and is loaded with maternal power.



Lot 59

AMDAHL TREASURE 9151

BD: 03/04/19 Reg No: 19494746 Tattoo: 9151

MGR TREASURE	V A R DISCOVERY 2240	CW
CONNEALY TREASURE 0369	SIH IMPRESSION OF 6108 1614	+24
JMC HIPPIE EXEC 0369 45121	CONNEALY MENTOR 7374	Marb
ANGUS AMDAHL'S HEAVY DUTY 323	JMC HIPPIES BULLSEYE 45121 65	+0.66
AMDAHL MISS MVP 778-763	W H S LIMELIGHT 64V	RE
AMDAHL MISS BLOCK 778-378	D R BLACKBIRD 133	+0.12
	CB BLOCK PARTY 156	
	S A 48 HUNTER 778 506	

CED	BW	WW	YW	SC	Milk	SW	SF	\$B
+5	+0.7	+52	+84	+1.31	+11	+43	+61	+105

BW: 72	Adj. WW: 558	WWR: 86
1-5 Star Rating • C/E: 3-5 Hfhrs/1-2 Cows		
C/E	Fleshing	Disposition
4	3	4

• 365 Adj. Wt: 987 lbs.
 • 9151 is a bull that travels well and will make exceptional females.

Lot 60

AMDAHL ROCKETEER 9179

BD: 04/06/19 Reg No: 19494762 Tattoo: 9179

MUSGRAVE AVIATOR	KROUPALS B&B IDENTITY	CW
AMDAHL'S ROCKETEER 636	MCATL FOREVER LADY 1429-138	+30
AMDAHL ERICA 431-465	G A R PROPHET	Marb
TOKACH NEW DESIGN 7067	S A 1117 HOMER 431 228	+0.55
SK MISS DESIGN ERICA 65	BON VIEW NEW DESIGN 878	RE
AMDAHL ERICA 431-465	TOKACH BLACKBIRD 4017	+0.47
	CARLSON 3185 BANDO 5991	
	R K MISS SPADE ERICA 11 A	

CED	BW	WW	YW	SC	Milk	SW	SF	\$B
+1	+2.0	+54	+92	+0.79	+19	+45	+79	+126

BW: 81	Adj. WW: 675	WWR: 97
1-5 Star Rating • C/E: 3-5 Hfhrs/1-2 Cows		
C/E	Fleshing	Disposition
2	3	3

• 365 Adj. Wt: 1,097 lbs.
 • This Rocketeer son is a well-balanced bull that will cover a lot of country.

Lot 61

AMDAHL TREASURE 9185

BD: 04/16/19 Reg No: 19494764 Tattoo: 9185

MGR TREASURE	V A R DISCOVERY 2240	CW
CONNEALY TREASURE 0369	SIH IMPRESSION OF 6108 1614	+35
JMC HIPPIE EXEC 0369 45121	CONNEALY MENTOR 7374	Marb
AMDAHL'S HEAVY DUTY 323	JMC HIPPIES BULLSEYE 45121 65	+0.80
AMDAHL EMMA 142-739	W H S LIMELIGHT 64V	RE
D R EMMA 142	D R BLACKBIRD 133	+0.42
	H A R B WINDY 702 JH	
	D R EMMA 2639	

CED	BW	WW	YW	SC	Milk	SW	SF	\$B
+6	+2.2	+60	+107	-	+18	+47	+78	+134

BW: 85	Adj. WW: 663	WWR: 102
1-5 Star Rating • C/E: 3-5 Hfhrs/1-2 Cows		
C/E	Fleshing	Disposition
3	2	4

• 365 Adj. Wt: 1,143 lbs.
 • 9185 earned a weaning ratio of 102 and a yearling ratio of 105.

Lot 62

AMDAHL BROKEN BOW 9142

BD: 02/22/19 Reg No: 19494743 Tattoo: 9142

KM BROKEN BOW 002	SUMMITCREST COMPLETE 1P55	CW
MILLARS BROKEN BOW 799	SUMMITCREST PRINCESS OP12	+41
MILLARS ERICA 530	TOMBSTONE 050	Marb
ANGUS AMDAHL'S ALL AMERICAN 324	MILLARS ERICA 022	+0.83
AMDAHL MISS ERICA 440-7169	MYTTY IN FOCUS	RE
AMDAHL MISS PROPHET 041-440	D R QUEEN 127	+0.36
	G A R PROPHET	
	AMDAHL'S MISS BLAZE 272 041	

CED	BW	WW	YW	SC	Milk	SW	SF	\$B
+10	+0.2	+66	+111	+1.61	+21	+70	+73	+130

BW: 74	Adj. WW: 630	WWR: 98
1-5 Star Rating • C/E: 3-5 Hfhrs/1-2 Cows		
C/E	Fleshing	Disposition
5	3	4

• 365 Adj. Wt: 1,051 lbs.
 • 9142 is a true 5 star, calving-ease bull out of the Miss Erica cow family that is loaded with Pathfinder dams.

Lot 63

AMDAHL AVIATOR 9138

BD: 02/19/19 Reg No: 19494742 Tattoo: 9138

MUSGRAVE AVIATOR	KROUPALS B&B IDENTITY	CW
BVC AVIATOR 4007	MCATL FOREVER LADY 1429-138	+17
BVC ROGUE PRIDE CC7 228	SYDGEN C C & 7	Marb
AKERS MISSING LINK 9603	B V C ROGUE PRIDE	+0.51
PAR PREDESTINED LINK 283	O C C MISSING LINK 830M	RE
P A R PREDESTINED BESSIE 128	O C C BLACKBIRD 736K	+0.41
	G A R PREDESTINED	
	H A R G A R K M K 2033	

CED	BW	WW	YW	SC	Milk	SW	SF	\$B
+7	+0.2	+35	+64	+0.30	+19	+30	+64	+106

BW: 73	Adj. WW: 546	WWR: 85
1-5 Star Rating • C/E: 3-5 Hfhrs/1-2 Cows		
C/E	Fleshing	Disposition
4	5	3

• 365 Adj. Wt: 991 lbs.
 • 9138 is a super deep-bodied, excellent footed bull that will cover a lot of country.

Angus Bulls

Lot 64 AMDAHL RANGE MASTER 0147

BD: 02/18/20 Reg No: 19788331 Tattoo: 0147

HA COWBOY UP 5405	HA OUTSIDE 3008	CW
AMDAHL RANGE MASTER 830	HA BLACKCAP LADY 1602	+39
AMDAHL MISS BP 380-509	AMDAHL BLOCK PARTY 368	Marb
ANGUS AMDAHL'S HEAVY DUTY 323	AMDAHL MISS HOMER 172-380	+0.62
AMDAHL DIXIE ERICA 5134-704	W H S LIMELIGHT 64V	RE
AMDAHL'S REMARKABULL 5134	D R BLACKBIRD 133	+0.40
	O C C REMARKABULL 937R	
	PAR MITCHELL'S LINK 303	

CED	BW	WW	YW	SC	Milk	SW	\$F	\$B
+8	+1.2	+67	+118	+1.14	+19	+60	+81	+132

1-5 Star Rating • C/E: 3-5 Hftrs/1-2 Cows

BW: 75	Adj. WW: 780	WWR: 107
C/E	Fleshing	Disposition
4	4	5

• Recommended for heifers. This Range Master son will be used in our herd AI and is a special opportunity in this years sale. His dam has earned a weaning ratio of 103 on her first two calves.

Lot 65 AMDAHL TREASURE PLUS 0149

BD: 02/20/20 Reg No: 19788333 Tattoo: 0149

MGR TREASURE	V A R DISCOVERY 2240	CW
CONNEALY TREASURE 0369	SJH IMPRESSION OF 6108 1614	+31
JMC HIPPIE EXEC 0369 45121	CONNEALY MENTOR 7374	Marb
	JMC HIPPIES BULLSEYE 45121 65	+0.56
AMDAHL'S ALL AMERICAN 324	MYTTY IN FOCUS	RE
AMDAHL BLACKBIRD 148-7174	D R QUEEN 127	+0.22
D R BLACKBIRD 148	H A R B WINDY 702 JH	
	D R BLACKBIRD 5043	

CED	BW	WW	YW	SC	Milk	SW	\$F	\$B
+14	-1.2	+60	+103	+1.15	+20	+59	+69	+109

1-5 Star Rating • C/E: 3-5 Hftrs/1-2 Cows

BW: 70	Adj. WW: 787	WWR: 108
C/E	Fleshing	Disposition
5	5	4

• Recommended for heifers. Treasure Plus 0149 offers the most important traits, such as HP, \$M and is backed by two Pathfinder donor cows with Queen 147 and Blackbird 148. 0149 earned a weaning ratio of 108.

Lot 66 AMDAHL RANGE MASTER 0155

BD: 02/23/20 Reg No: 19788337 Tattoo: 0155

HA COWBOY UP 5405	HA OUTSIDE 3008	CW
AMDAHL RANGE MASTER 830	HA BLACKCAP LADY 1602	+44
AMDAHL MISS BP 380-509	AMDAHL BLOCK PARTY 368	Marb
SK MR UPDATE 1	AMDAHL MISS HOMER 172-380	+0.37
AMDAHL BLKBRD UPDATE290-6166	TOKACH UPDATE 9009	RE
P A R HOMER'S BLACKBIRD 290	S K MISS TRAVEL LOG ELBA 17	+0.43
	PAR DAKOTA HOMER 05	
	C R R FREIGHTLINER N281	

CED	BW	WW	YW	SC	Milk	SW	\$F	\$B
+1	+3.8	+80	+134	+0.79	+22	+69	+86	+125

1-5 Star Rating • C/E: 3-5 Hftrs/1-2 Cows

BW: 89	Adj. WW: 846	WWR: 116
C/E	Fleshing	Disposition
1	5	4

• 0155 started out looking like a herd bull and never looked back, earning a weaning ratio of 116.

Lot 67 AMDAHL RANGE MASTER 0158

BD: 02/26/20 Reg No: 19802732 Tattoo: 0158

HA COWBOY UP 5405	HA OUTSIDE 3008	CW
AMDAHL RANGE MASTER 830	HA BLACKCAP LADY 1602	+37
AMDAHL MISS BP 380-509	AMDAHL BLOCK PARTY 368	Marb
S T MR FOCUS A	AMDAHL MISS HOMER 172-380	+0.42
AMDAHL MISS FOCUS 4467-549	TOKACH IN FOCUS 8241	RE
S K MISS TIME LADY 16A	R K MISS TRAVELER BLKBD 51	+0.33
	R K MR HI FLYER 8A	
	S K MISS DIVIDEND LADY 17	

CED	BW	WW	YW	SC	Milk	SW	\$F	\$B
+3	+3.0	+60	+101	+1.24	+24	+54	+76	+115

1-5 Star Rating • C/E: 3-5 Hftrs/1-2 Cows

BW: 85	Adj. WW: 758	WWR: 104
C/E	Fleshing	Disposition
2	5	5

• Range Master 830 sires consistent pounds, thickness and eye appeal and 0158 is no exception, earning a weaning ratio of 104.

Lot 68 AMDAHL ROCKETEER 0172

BD: 03/18/20 Reg No: 19788351 Tattoo: 0172

MUSGRAVE AVIATOR	KOUPALS B&B IDENTITY	CW
AMDAHL'S ROCKETEER 636	MCATL FOREVER LADY 1429-138	+52
AMDAHL ERICA 431-465	G A R PROPHET	Marb
ANGUS D R BANDO 854	S A 1117 HOMER 431 228	+0.56
D R EMMA 144	LT 598 BANDO 9074	RE
D R EMMA 803	D R SUGAR QUEEN 4583	+0.48
	MYTTY IN FOCUS	
	D R EMMA 6044	

CED	BW	WW	YW	SC	Milk	SW	\$F	\$B
+7	-0.1	+66	+115	+1.07	+29	+76	+91	+137

1-5 Star Rating • C/E: 3-5 Hftrs/1-2 Cows

BW: 77	Adj. WW: 860	WWR: 114
C/E	Fleshing	Disposition
4	4	4

• Recommended for heifers. Pretty easy to see why this bull will make a great fit in any herd. He earned a weaning ratio of 114. His dam has earned a weaning ratio of 107 on her seven calves.

Lot 69 AMDAHL GROWTH FUND 065

BD: 01/16/20 Reg No: 19798238 Tattoo: 065

BASIN PAYWEIGHT 1682	BASIN PAYWEIGHT 0065	CW
DEER VALLEY GROWTH FUND	21AR O LASS 7017	+54
DEER VALLEY RITA 36113	PLATTEMERE WEIGH UP K360	Marb
JAUER 8214 ANCHOR 889 173	DEER VALLEY RITA 9457	+0.39
JAUER 173 ANCHOR 109 7401	JAUER 646 ANCHOR 8214 544	RE
JAUER HOMER 550 109	JAUER EXODUS 889 849 C	+0.35
	O C C HOMER 650H	
	JAUER TRAVELODGE 550 327	

CED	BW	WW	YW	SC	Milk	SW	\$F	\$B
+10	+1.5	+62	+113	+0.42	+20	+55	+105	+139

1-5 Star Rating • C/E: 3-5 Hftrs/1-2 Cows

BW: 84	Adj. WW: 702	WWR: 96
C/E	Fleshing	Disposition
3	5	4

• Recommended for heifers. 065 is a very deep-ribbed Growth Fund son that is sure to add pounds and make tremendous females.

Angus Bulls

Lot 70 AMDAHL WEIGH UP 0101

BD: 01/26/20		Reg No: 19792264		Tattoo: 0101	
PLATTEMERE WEIGH UP K360	SITZ UPWARD 307R			CW	
CONNEALY WEIGH UP 9109 5147	BARBARA OF PLATTEMERE 337			+43	
EURA ELGA OF CONANGA 9109	S A V BISMARCK 5682			Marb	
	EURA CAL OF CONANGA 56B			+0.21	
AMDAHLS AMTRAK 618	V D A R BLACK TRAIN 1243			RE	
AMDAHL EMMA 445-815	AMDAHL QUEEN 709-404			+0.48	
AMDAHL EMMA 144-445	AMDAHL'S EMBAZON 0005				
	D R EMMA 144				

CED	BW	WW	YW	SC	Milk	SW	SF	SB
+12	+0.2	+60	+106	+0.61	+27	+64	+79	+109
1-5 Star Rating • C/E: 3-5 Hfirs/1-2 Cows								
BW: 69			Adj. WW: 709			WWR: 97		
C/E			Fleshing			Disposition		
5			3			4		

• Recommended for heifers. Here is a true 5 star, calving-ease bull backed by tremendous cow power.

Lot 71 AMDAHL RANGE MASTER 0126

BD: 02/05/20		Reg No: 19788319		Tattoo: 0126	
HA COWBOY UP 5405	HA OUTSIDE 3008			CW	
AMDAHL RANGE MASTER 830	HA BLACKCAP LADY 1602			+37	
AMDAHL MISS BP 380-509	AMDAHL BLOCK PARTY 368			Marb	
	AMDAHL MISS HOMER 172-380			+0.40	
MOGCK FRONTMAN 1141	KESSLERS FRONTMAN ROOI			RE	
AMDAHL JD MISS FM 030-610	MOGCK ENTELLO 1446			+0.37	
AMDAHL'S JD MISS 22 030	O C C PROTOTYPE 847P				
	P A R TRAVELING HOMER 22				

CED	BW	WW	YW	SC	Milk	SW	SF	SB
+6	+1.2	+63	+115	+0.84	+15	+48	+80	+120
1-5 Star Rating • C/E: 3-5 Hfirs/1-2 Cows								
BW: 82			Adj. WW: 734			WWR: 100		
C/E			Fleshing			Disposition		
3			4			4		

• 0126 has all the finest Amdahl cows in his pedigree.

Lot 72 AMDAHL RANGE MASTER 0132

BD: 02/08/20		Reg No: 19788324		Tattoo: 0132	
HA COWBOY UP 5405	HA OUTSIDE 3008			CW	
AMDAHL RANGE MASTER 830	HA BLACKCAP LADY 1602			+44	
AMDAHL MISS BP 380-509	AMDAHL BLOCK PARTY 368			Marb	
	AMDAHL MISS HOMER 172-380			+0.49	
R B TOUR OF DUTY 177	WERNER WAR PARTY 2417			RE	
AMDAHL BLACKBIRD JD 133-6124	B A LADY 6807 305			+0.53	
D R BLACKBIRD 133	S A V FINAL ANSWER 0035				
	D R BLACKBIRD 2511				

CED	BW	WW	YW	SC	Milk	SW	SF	SB
+5	+3.0	+70	+124	+1.13	+24	+62	+82	+129
1-5 Star Rating • C/E: 3-5 Hfirs/1-2 Cows								
BW: 85			Adj. WW: 775			WWR: 106		
C/E			Fleshing			Disposition		
2			3			3		

• 0132 earned a weaning ratio of 106. His dam has earned a weaning ratio of 108 on her three calves.



JD and Annie

Lot 73 AMDAHL ROCKETEER 0134

BD: 02/09/20		Reg No: 19788326		Tattoo: 0134	
MUSGRAVE AVIATOR	KOUPALS B&B IDENTITY			CW	
AMDAHL'S ROCKETEER 636	MCATL FOREVER LADY 1429-138			+42	
AMDAHL ERICA 431-465	G A R PROPHET			Marb	
	S A 1117 HOMER 431 228			+0.67	
CB BLOCK PARTY 156	WERNER WAR PARTY 2417			RE	
AMDAHL MISS BP 3130-508	CB 965 MAINLINE			+0.68	
K S U MISS 616 3130	RITO 616 OF 4B20 6807				
	K S U MISS LUCY BOY 0126				

CED	BW	WW	YW	SC	Milk	SW	SF	SB
+5	+1.1	+52	+87	+0.88	+28	+58	+87	+142
1-5 Star Rating • C/E: 3-5 Hfirs/1-2 Cows								
BW: 78			Adj. WW: 723			WWR: 99		
C/E			Fleshing			Disposition		
3			5			4		

• Recommended for heifers. 0134 is the 3/4 brother to Amdahl's Bruiser 724 which was our top selling bull in the 2018 sale.



3/4 BROTHER TO LOT 73: AMDAHL'S BRUISER 724

We are offering *FREE* wintering on the Bulls!

Angus Bulls

Lot 74 **AMDAHL ROCKETEER 0162**

BD: 03/01/20		Reg No: 19788342	Tattoo: 0162
MUSGRAVE AVIATOR	KOUPALS B&B IDENTITY	CW	
AMDAHL'S ROCKETEER 636	MCATL FOREVER LADY 1429-138	+27	
AMDAHL ERICA 431-465	G A R PROPHET	Marb	
P A R DAKOTA MODERATOR 341	S A 1117 HOMER 431 228	+0.32	
PAR MODERN LASSIE 143	PAR MODERATOR'S BROADSIDE 09	RE	
P A R BROADSIDE LASSIE 401	P A R MODERATE EMBLAZON 49	+0.41	
	PAR DAKOTA HOMER 05		
	PAR LASSIE 185		

CED	BW	WW	YW	SC	Milk	SW	SF	SB
+6	+0.7	+48	+79	-	+24	+52	+65	+99
1-5 Star Rating • C/E: 3-5 Hfirs/1-2 Cows								
BW: 78			Adj. WW: 780			WWR: 103		
C/E	Fleshing	Disposition						
4	5	3						

• 0162 has true natural thickness and earned a weaning ratio of 103. If you want fleshing ability and longevity, here's your bull.

Lot 75 **AMDAHL TREASURE 0167**

BD: 03/11/20		Reg No: 19788347	Tattoo: 0167
MGR TREASURE	V A R DISCOVERY 2240	CW	
CONNEALY TREASURE 0369	SIH IMPRESSION OF 6108 1614	+20	
JMC HIPPIE EXEC 0369 45121	CONNEALY MENTOR 7374	Marb	
P A R DAKOTA MODERATOR 341	JMC HIPPE BULLSEYE 45121 65	+0.60	
PAR MODERATOR PAXTON 493	PAR MODERATOR'S BROADSIDE 09	RE	
P A R PAXTONS ANNIE 141	P A R MODERATE EMBLAZON 49	+0.13	
	O C C PAXTON 730P		
	BAA ANNIE 5212A		

CED	BW	WW	YW	SC	Milk	SW	SF	SB
+10	-0.8	+52	+85	+0.81	+16	+51	+55	+95
1-5 Star Rating • C/E: 3-5 Hfirs/1-2 Cows								
BW: 74			Adj. WW: 792			WWR: 105		
C/E	Fleshing	Disposition						
5	5	4						

• Recommended for heifers. This Treasure son earned a weaning ratio of 105.

Lot 76 **AMDAHL RANGE MASTER 0165**

BD: 03/02/20		Reg No: 19788345	Tattoo: 0165
HA COWBOY UP 5405	HA OUTSIDE 3008	CW	
AMDAHL RANGE MASTER 830	HA BLACKCAP LADY 1602	+43	
AMDAHL MISS BP 380-509	AMDAHL BLOCK PARTY 368	Marb	
BVC AVIATOR 4007	AMDAHL MISS HOMER 172-380	+0.42	
AMDAHL MISS JUDY 407-7180	MUSGRAVE AVIATOR	RE	
AMDAHL MISS JUDY 1712-407	BVC ROGUE PRIDE CC7 228	+0.45	
	SA 652 MISSING LINK 848 620		
	S T MISS POWER JUDY 2		

CED	BW	WW	YW	SC	Milk	SW	SF	SB
+7	+1.5	+63	+113	+0.68	+22	+57	+83	+124
1-5 Star Rating • C/E: 3-5 Hfirs/1-2 Cows								
BW: 81			Adj. WW: 765			WWR: 101		
C/E	Fleshing	Disposition						
4	4	4						

• 0165 has really hit his stride with his exceptional growth past weaning.

Lot 77 **AMDAHL ROCKETEER 0163**

BD: 03/02/20		Reg No: 19788343	Tattoo: 0163
MUSGRAVE AVIATOR	KOUPALS B&B IDENTITY	CW	
AMDAHL'S ROCKETEER 636	MCATL FOREVER LADY 1429-138	+44	
AMDAHL ERICA 431-465	G A R PROPHET	Marb	
CB BLOCK PARTY 156	S A 1117 HOMER 431 228	+0.60	
AMDAHL MISS BP 154-471	WERNER WAR PARTY 2417	RE	
AMDAHL MISS HOMER62 2170-154	CB 965 MAINLINE	+0.63	
	P A R HOMER 62		
	K S U MISS ALLIANCE 2170		

CED	BW	WW	YW	SC	Milk	SW	SF	SB
+2	+1.9	+53	+92	+1.06	+29	+56	+86	+137
1-5 Star Rating • C/E: 3-5 Hfirs/1-2 Cows								
BW: 79			Adj. WW: 745			WWR: 98		
C/E	Fleshing	Disposition						
3	5	4						

• 0163 is a true beef bull backed by a Pathfinder dam.

Lot 78 **AMDAHL TREASURE CHEST 0180**

BD: 04/11/20		Reg No: 19788358	Tattoo: 0180
MGR TREASURE	V A R DISCOVERY 2240	CW	
CONNEALY TREASURE 0369	SIH IMPRESSION OF 6108 1614	+36	
JMC HIPPIE EXEC 0369 45121	CONNEALY MENTOR 7374	Marb	
BUSHES SURE REWARD 27	JMC HIPPE BULLSEYE 45121 65	+0.54	
SK MISS OREILLY ERICA 24	VIN-MAR O'REILLY FACTOR	RE	
S T MISS FOCUS ERICA 20C	BUSHES BLACKBIRD GAL 6577	+0.30	
	TOKACH IN FOCUS 8083		
	R K MISS FAMOUS ERICA 24		

CED	BW	WW	YW	SC	Milk	SW	SF	SB
+8	+0.3	+71	+121	+1.54	+18	+66	+86	+126
1-5 Star Rating • C/E: 3-5 Hfirs/1-2 Cows								
BW: 78			Adj. WW: 938			WWR: 118		
C/E	Fleshing	Disposition						
4	4	5						

• Recommended for heifers. Treasure Chest 0180 earned the top spot at weaning with an impressive 938 pounds with a weaning ratio of 118. His dam has earned a weaning ratio of 105 on her five calves.



LOT 78 SIRE: CONNEALY TREASURE 0369

Join us on November 21, 2020 for our Annual Sale

Angus Bulls

Lot 79 **AMDAHL HEAVY PLUS 0127**

BD: 02/05/20		Reg No: 19788320		Tattoo: 0127	
AMDAHL'S HEAVY DUTY 323	W H S LIMELIGHT 64V	CW			
AMDAHL HEAVY PLUS 805	D R BLACKBIRD 133	+34			
AMDAHL JD ANNIE 294-405	THOMAS TOP HAND 0536	Marb			
	AMDAHL JD ANNIE 208	+0.43			
MOGCK FRONTMAN 1141	KESSLERS FRONTMAN R001	RE			
AMDAHL MISS AVIATOR 632-880	MOGCK ENTELLO 1446	+0.59			
AMDAHL MISS FRONTMAN3130-632	MOGCK FRONTMAN 1141				
	K S U MISS 616 3130				

CED	BW	WW	YW	SC	Milk	SW	SF	SB
+10	+0.4	+59	+97	+1.48	+16	+53	+82	+125
1-5 Star Rating • C/E: 3-5 Hfirs/1-2 Cows								
BW: 73			Adj. WW: 727			WWR: 99		
C/E	Fleshing	Disposition						
5	5	4						

• Recommended for heifers. 0127 will add pounds to his calves and make feminine and productive females.

Lot 80 **AMDAHL ROCKETEER 0119**

BD: 02/04/20		Reg No: 19788315		Tattoo: 0119	
MUSGRAVE AVIATOR	KOUPALS B&B IDENTITY	CW			
AMDAHL'S ROCKETEER 636	MCATL FOREVER LADY 1429-138	+39			
AMDAHL ERICA 431-465	G A R PROPHET	Marb			
	S A 1117 HOMER 431 228	+0.53			
CB BLOCK PARTY 156	WERNER WAR PARTY 2417	RE			
AMDAHL MISS BLOCK 778-378	CB 965 MAINLINE	+0.61			
S A 48 HUNTER 778 506	S A 928H HUNTER 48 255				
	S A 221 EMBLAZON 506 061				

CED	BW	WW	YW	SC	Milk	SW	SF	SB
+5	+0.7	+48	+79	+0.43	+30	+57	+74	+122
1-5 Star Rating • C/E: 3-5 Hfirs/1-2 Cows								
BW: 75			Adj. WW: 711			WWR: 97		
C/E	Fleshing	Disposition						
4	4	4						

• Recommended for heifers. 0119 is backed by a cow that has paved her way to greatness, earning a weaning ratio of 107 on her six calves.

Lot 82 **AMDAHL TREASURE 013**

BD: 01/06/20		Reg No: 19788269		Tattoo: 013	
MGR TREASURE	V A R DISCOVERY 2240	CW			
CONNEALY TREASURE 0369	SIH IMPRESSION OF 6108 1614	+47			
JMC HIPPIE EXEC 0369 45121	CONNEALY MENTOR 7374	Marb			
	JMC HIPPIES BULLSEYE 45121 65	+0.82			
BVC AVIATOR 4003	MUSGRAVE AVIATOR	RE			
AMDAHL ERICA 337-8153	BVC LUCY TH 263	+0.60			
AMDAHL'S ERICA 147DK-337	W H S LIMELIGHT 64V				
	D R ERICA 147				

CED	BW	WW	YW	SC	Milk	SW	SF	SB
+15	-2.0	+63	+112	+1.09	+22	+64	+89	+147
1-5 Star Rating • C/E: 3-5 Hfirs/1-2 Cows								
BW: 58			Adj. WW: 751			WWR: 103		
C/E	Fleshing	Disposition						
5	5	4						

• Recommended for heifers. One of the very top bulls in the offering for CED, YW and marbling.



Lot 81 **AMDAHL ROCKETEER 0124**

BD: 02/05/20		Reg No: 19788318		Tattoo: 0124	
MUSGRAVE AVIATOR	KOUPALS B&B IDENTITY	CW			
AMDAHL'S ROCKETEER 636	MCATL FOREVER LADY 1429-138	+33			
AMDAHL ERICA 431-465	G A R PROPHET	Marb			
	S A 1117 HOMER 431 228	+0.50			
PAR DAKOTA HOMER 05	O C C HOMER 650H	RE			
P A R HOMERS DATELINE 109	P A R TRAVELING EMBLAZON 333	+0.40			
C R R DATELINE 7270 N197	WK DATELINE 7270				
	ANKONY ERINA T756				

CED	BW	WW	YW	SC	Milk	SW	SF	SB
+4	+2.0	+54	+96	+0.09	+21	+47	+90	+133
1-5 Star Rating • C/E: 3-5 Hfirs/1-2 Cows								
BW: 84			Adj. WW: 729			WWR: 100		
C/E	Fleshing	Disposition						
2	3	3						

• Here is a female making Rocketeer son.



Lot 83 **AMDAHL ENHANCE 014**

BD: 01/06/20		Reg No: 19799369		Tattoo: 014	
SYDGEN EXCEED 3223	SYDGEN GOOGOL	CW			
SYDGEN ENHANCE	SYDGEN FOREVER LADY 1255	+47			
SYDGEN RITA 2618	SYDGEN LIBERTY GA 8627	Marb			
	FOX RUN RITA 9308	+0.79			
AMDAHL'S ROCKETEER 636	MUSGRAVE AVIATOR	RE			
AMDAHL MISS ROCK 554-869	AMDAHL ERICA 431-465	+0.67			
AMDAHL MISS BLK PARTY154-554	CB BLOCK PARTY 156				
	AMDAHL MISS HOMER62 2170-154				

CED	BW	WW	YW	SC	Milk	SW	SF	SB
+3	+2.5	+55	+106	+1.16	+29	+53	+100	+159
1-5 Star Rating • C/E: 3-5 Hfirs/1-2 Cows								
BW: 81			Adj. WW: 702			WWR: 96		
C/E	Fleshing	Disposition						
3	3	4						

• Big dollars beef bull with great carcass traits.



Angus Bulls

Lot 84 **AMDAHL ENHANCE 037**

BD: 01/11/20 Reg No: 19799421 Tattoo: 037

SYDGEN EXCEED 3223	SYDGEN GOOGOL	CW
SYDGEN ENHANCE	SYDGEN FOREVER LADY 1255	+53
SYDGEN RITA 2618	SYDGEN LIBERTY GA 8627	Marb
	FOX RUN RITA 9308	+0.85
MUSGRAVE BIG SKY	CONNEALY EARNAN 076E	RE
AMDAHL'S DIXIE 369-732	SAV PRIMROSE 7861	+0.50
AMDAHL'S DIXIE 014-369	CB BLOCK PARTY 156	
	AMDAHL DIXIE 7402 014	

CED	BW	WW	YW	SC	Milk	SW	SF	SB
+8	+0.7	+63	+122	+1.27	+25	+60	+106	+165

BW: 76	Adj. WW: 729	WWR: 100	1-5 Star Rating • C/E: 3-5 Hfirs/1-2 Cows
C/E	Fleshing	Disposition	
4	3	4	

• Recommended for heifers. This Enhance son offers exceptional growth numbers and is backed by a dam that is off to a tremendous start earning a weaning ratio of 103 on her first two calves.



Lot 85 **AMDAHL PROPHET 045**

BD: 01/12/20 Reg No: 19798047 Tattoo: 045

C R A BEXTOR 872 5205 608	B A R EXT TRAVELER 205	CW
G A R PROPHET	CRA LADY JAYE 608 498 S EASY	+37
G A R OBJECTIVE 1885	S S OBJECTIVE T510 0T26	Marb
	G A R 1407 NEW DESIGN 2232	+0.98
MUSGRAVE BIG SKY	CONNEALY EARNAN 076E	RE
AMDAHL BLACKBIRD 148-747	SAV PRIMROSE 7861	+0.26
D R BLACKBIRD 148	H A R B WINDY 702 JH	
	D R BLACKBIRD 5043	

CED	BW	WW	YW	SC	Milk	SW	SF	SB
+10	+1.5	+59	+102	+0.52	+29	+64	+67	+127

BW: 77	Adj. WW: 691	WWR: 93	1-5 Star Rating • C/E: 3-5 Hfirs/1-2 Cows
C/E	Fleshing	Disposition	
5	4	4	

• Recommended for heifers. 045 is backed by generations of Pathfinder females.



Lot 86 **AMDAHL HEAVY PLUS 053**

BD: 01/14/20 Reg No: 19788286 Tattoo: 053

AMDAHL'S HEAVY DUTY 323	W H S LIMELIGHT 64V	CW
AMDAHL HEAVY PLUS 805	D R BLACKBIRD 133	+38
AMDAHL JD ANNIE 294-405	THOMAS TOP HAND 0536	Marb
ANGUS	AMDAHL JD ANNIE 208	+0.81
CB BLOCK PARTY 156	WERNER WAR PARTY 2417	RE
AMDAHL'S DIXIE 014-369	CB 965 MAINLINE	+0.53
AMDAHL DIXIE 7402 014	O C C LINEBRED 661L	
	JAUER 173 ANCHOR 2011 7402	

CED	BW	WW	YW	SC	Milk	SW	SF	SB
+3	+2.0	+63	+110	+1.37	+18	+52	+77	+135

BW: 79	Adj. WW: 722	WWR: 99	1-5 Star Rating • C/E: 3-5 Hfirs/1-2 Cows
C/E	Fleshing	Disposition	
3	4	4	

• 053 is a well-balanced bull for maternal power, performance and true carcass merit. His dam is a second generation Pathfinder.



Lot 87 **AMDAHL BRUISER 062**

BD: 01/15/20 Reg No: 19788288 Tattoo: 062

MUSGRAVE AVIATOR	KOUPALS B&B IDENTITY	CW
AMDAHL'S BRUISER 724	MCATL FOREVER LADY 1429-138	+28
AMDAHL MISS BP 3130-508	CB BLOCK PARTY 156	Marb
ANGUS	K S U MISS 616 3130	+0.58
CONNEALY RIGHT ANSWER 85B	CONNEALY RIGHT ANSWER 746	RE
BR MISS DESIGN	ALLEYA OF CONANGA 85B	+0.23
B R MISS GEN BY DES 6615	B R MR GEN BY DES 4002P	
	B R MISS BANDO 466P	

CED	BW	WW	YW	SC	Milk	SW	SF	SB
+11	-1.3	+59	+98	+0.53	+20	+62	+70	+115

BW: 76	Adj. WW: 705	WWR: 96	1-5 Star Rating • C/E: 3-5 Hfirs/1-2 Cows
C/E	Fleshing	Disposition	
4	5	4	

• Recommended for heifers. 062 is loaded with lots of natural thickness and muscle. His dam has a picture perfect udder.

Lot 88 **AMDAHL HEAVY DUTY 086**

BD: 01/18/20 Reg No: 19788296 Tattoo: 086

W H S LIMELIGHT 64V	MYTTY IN FOCUS	CW
AMDAHL'S HEAVY DUTY 323	W H S PREDESTINED LASS 77T	+42
D R BLACKBIRD 133	S A V FINAL ANSWER 0035	Marb
	D R BLACKBIRD 2511	+0.55
LEMMON NEWSLINE C804	B/R NEW DESIGN 036	RE
KSU MISS NEWSLINE 7197	WHITE FENCE PRIDE H1	+0.49
K S U MISS 602C 3198	BASIN MAX 602C	
	MISS BANDO K 8125	

CED	BW	WW	YW	SC	Milk	SW	SF	SB
+4	+2.4	+56	+98	+1.38	+26	+52	+89	+137

BW: 84	Adj. WW: 691	WWR: 94	1-5 Star Rating • C/E: 3-5 Hfirs/1-2 Cows
C/E	Fleshing	Disposition	
2	3	3	

• 086 is deep-bodied and backed by the 7197 cow that has earned a second to none weaning ratio of 105 on her twelve calves.



LOT 87 SIRE: AMDAHL'S BRUISER 724

Angus Bulls

Lot 89 **AMDAHL RANGE MASTER 0108**
 BD: 01/29/20 Reg No: 19788308 Tattoo: 0108

HA COWBOY UP 5405	HA OUTSIDE 3008	CW
AMDAHL RANGE MASTER 830	HA BLACKCAP LADY 1602	+39
AMDAHL MISS BP 380-509	AMDAHL BLOCK PARTY 368	Marb
ANGUS	AMDAHL MISS HOMER 172-380	+0.52
BUSHS KODIAK LEAD 754	SOO LINE KODIAK 8073	RE
SK MISS KODIAK ADA 7	BUSHS BLACKBIRD GAL 8105	+0.41
S T MISS PERFECT ADA 3	JAUER PICTURE PERFECT 43 682	
	R K MISS TRAVELER ADA 14	

CED	BW	WW	YW	SC	Milk	SW	SF	SB
+3	+4.1	+59	+110	+0.29	+20	+42	+79	+126

BW: 89	Adj. WW: 701	WWR: 96
---------------	---------------------	----------------

1-5 Star Rating • C/E: 3-5 Hftrs/1-2 Cows		
C/E	Fleshing	Disposition
1	4	4

• 0108 is balanced in thickness, muscle and power.

Lot 90 **AMDAHL ROCKETEER 0154**
 BD: 02/23/20 Reg No: 19788336 Tattoo: 0154

MUSGRAVE AVIATOR	KOUPLS B&B IDENTITY	CW
AMDAHL'S ROCKETEER 636	MCATL FOREVER LADY 1429-138	+43
AMDAHL ERICA 431-465	G A R PROPHET	Marb
	S A 1117 HOMER 431 228	+0.41
R B TOUR OF DUTY 177	WERNER WAR PARTY 2417	RE
AMDAHL MISS TOUR DUTY50-6152	B A LADY 6807 305	+0.69
P A R EMBLAZON 50	O C C EMBLAZON 854E	
	P A R HEAVY DRIVE 478	

CED	BW	WW	YW	SC	Milk	SW	SF	SB
+2	+1.9	+54	+92	+0.59	+23	+51	+86	+129

BW: 81	Adj. WW: 676	WWR: 92
---------------	---------------------	----------------

1-5 Star Rating • C/E: 3-5 Hftrs/1-2 Cows		
C/E	Fleshing	Disposition
3	3	4

• 0154 is a long-bodied bull that is supported by the great Emblazon 50 cow who was the longest living cow in Amdahl history.

Lot 91 **AMDAHL PROPHET 044**
 BD: 01/12/20 Reg No: 19798044 Tattoo: 044

C R A BEXTOR 872 5205 608	B A R EXT TRAVELER 205	CW
G A R PROPHET	CRA LADY JAYE 608 498 S EASY	+22
G A R OBJECTIVE 1885	S S OBJECTIVE T510 OT26	Marb
	G A R 1407 NEW DESIGN 2232	+0.96
O C C X-TRA EASY 708X	O C C NO PROBLEMS 52N	RE
AMDAHL ANNIE 5109-752	O C C DIXIE ERICA 678T	+0.01
AMDAHL JD ANNIE294-5109	VIN-MAR CONSENSUS 2616	
	AMDAHL JD ANNIE 208	

CED	BW	WW	YW	SC	Milk	SW	SF	SB
+9	+1.4	+54	+95	+0.05	+25	+56	+49	+102

BW: 78	Adj. WW: 711	WWR: 97
---------------	---------------------	----------------

1-5 Star Rating • C/E: 3-5 Hftrs/1-2 Cows		
C/E	Fleshing	Disposition
4	4	4

• Recommended for heifers. This high marbling Prophet son is sure to make great females.

Lot 92 **AMDAHL PROPHET 046**
 BD: 01/12/20 Reg No: 19798045 Tattoo: 046

C R A BEXTOR 872 5205 608	B A R EXT TRAVELER 205	CW
G A R PROPHET	CRA LADY JAYE 608 498 S EASY	+38
G A R OBJECTIVE 1885	S S OBJECTIVE T510 OT26	Marb
	G A R 1407 NEW DESIGN 2232	+0.87
CONNEALY COUNTDOWN	CONNEALY FINAL SOLUTION	RE
AMDAHL MISS CD 509-758	ENTARNA OF CONANGA 140	+0.36
AMDAHL MISS BP 380-509	AMDAHL BLOCK PARTY 368	
	AMDAHL MISS HOMER 172-380	

CED	BW	WW	YW	SC	Milk	SW	SF	SB
+11	+0.5	+58	+107	+0.27	+27	+60	+69	+126

BW: 80	Adj. WW: 661	WWR: 90
---------------	---------------------	----------------

1-5 Star Rating • C/E: 3-5 Hftrs/1-2 Cows		
C/E	Fleshing	Disposition
4	3	4

• Recommended for heifers. He is one of the finest Prophet sons in the offering backed by the Pathfinder cow family Miss BP 509.



Lot 93 **AMDAHL HEAVY DUTY 048**
 BD: 01/13/20 Reg No: 19788283 Tattoo: 048

W H S LIMELIGHT 64V	MYTTY IN FOCUS	CW
AMDAHL'S HEAVY DUTY 323	W H S PREDESTINED LASS 77T	+37
D R BLACKBIRD 133	S A V FINAL ANSWER 0035	Marb
	D R BLACKBIRD 2511	+0.68
CB BLOCK PARTY 156	WERNER WAR PARTY 2417	RE
AMDAHL'S QUEEN B P 709-3101	CB 965 MAINLINE	+0.46
AMDAHL HOMER QUEEN 531-709	P A R HOMER 62	
	P A R HEAVY QUEEN RITO 531	

CED	BW	WW	YW	SC	Milk	SW	SF	SB
+4	+1.8	+54	+92	+1.42	+30	+59	+77	+130

BW: 83	Adj. WW: 716	WWR: 97
---------------	---------------------	----------------

1-5 Star Rating • C/E: 3-5 Hftrs/1-2 Cows		
C/E	Fleshing	Disposition
3	3	3

• Well-balanced bull for maternal and performance traits.



LOT 93 DAM: AMDAHL'S QUEEN B P 709-3101

We are offering FREE wintering on the Bulls!

Angus Bulls

Lot 94 **AMDAHL RANGE MASTER 050**

BD: 01/13/20 Reg No: 19788285 Tattoo: 050

HA COWBOY UP 5405	HA OUTSIDE 3008	CW
AMDAHL RANGE MASTER 830	HA BLACKCAP LADY 1602	+27
AMDAHL MISS BP 380-509	AMDAHL BLOCK PARTY 368	Marb
	AMDAHL MISS HOMER 172-380	+0.44
S A 950G GLORY 322 306	O C C GLORY 950G	RE
S A 322 GLORY 681 339	S A 19 TRAVELER 306 906	+0.31
S A 880H HELMSMAN 339 872	O C C HELMSMAN 880H	
	S A 353 TRAVELER 872 546	

CED	BW	WW	YW	SC	Milk	SW	SF	SB
+6	+1.6	+46	+81	+0.36	+18	+37	+66	+106

BW: 80	Adj. WW: 667	WWR: 91
1-5 Star Rating • C/E: 3-5 Hfirs/1-2 Cows		
C/E	Fleshing	Disposition
3	4	4

• Recommended for heifers. 050 is out of the oldest and most proven cow in the herd.



LOT 94 DAM: S A 322 GLORY 681 339

Lot 95 **AMDAHL ROCKETEER 0105**

BD: 01/28/20 Reg No: 19788302 Tattoo: 0105

MUSGRAVE AVIATOR	KOUPALS B&B IDENTITY	CW
AMDAHL'S ROCKETEER 636	MCATL FOREVER LADY 1429-138	+38
AMDAHL ERICA 431-465	G A R PROPHET	Marb
	S A 1117 HOMER 431 228	+0.70
VIN-MAR CONSENSUS 2616	CONNEALY CONSENSUS 7229	RE
AMDAHL EMMA VMC 144-5111	COR BLACKCAP 6224 238 MIDLND	+0.56
D R EMMA 144	D R BANDO 854	
	D R EMMA 803	

CED	BW	WW	YW	SC	Milk	SW	SF	SB
+4	+1.8	+51	+89	+0.61	+27	+54	+83	+136

BW: 85	Adj. WW: 710	WWR: 97
1-5 Star Rating • C/E: 3-5 Hfirs/1-2 Cows		
C/E	Fleshing	Disposition
3	3	3

• Here is a Rocketeer son that will make moderate and productive females.

Lot 96 **AMDAHL RANGE MASTER 0109**

BD: 01/29/20 Reg No: 19788303 Tattoo: 0109

HA COWBOY UP 5405	HA OUTSIDE 3008	CW
AMDAHL RANGE MASTER 830	HA BLACKCAP LADY 1602	+39
AMDAHL MISS BP 380-509	AMDAHL BLOCK PARTY 368	Marb
	AMDAHL MISS HOMER 172-380	+0.47
CONNEALY COUNTDOWN	CONNEALY FINAL SOLUTION	RE
AMDAHL MISS PRIDE 5159-734	ENTARNA OF CONANGA 140	+0.52
AMDAHL MISS PRIDE 5043-5159	BUSHS CONTAGIOUS 669	
	R K MISS DESIGN PRIDE 7	

CED	BW	WW	YW	SC	Milk	SW	SF	SB
+9	+0.8	+60	+108	+0.86	+21	+54	+75	+119

BW: 72	Adj. WW: 717	WWR: 98
1-5 Star Rating • C/E: 3-5 Hfirs/1-2 Cows		
C/E	Fleshing	Disposition
4	5	3

• Recommended for heifers. 0109 represents what his sire can do, adding thickness across the back with depth of rib.

Lot 97 **AMDAHL ROCKETEER 0111**

BD: 01/31/20 Reg No: 19788305 Tattoo: 0111

MUSGRAVE AVIATOR	KOUPALS B&B IDENTITY	CW
AMDAHL'S ROCKETEER 636	MCATL FOREVER LADY 1429-138	+28
AMDAHL ERICA 431-465	G A R PROPHET	Marb
	S A 1117 HOMER 431 228	+0.30
AMDAHL'S MODERATOR 829	JAUER MODERATOR 297 523	RE
AMDAHL'S MISS MODE 616-281	JAUER 077 GLADIATOR 982 2011	+0.54
AMDAHL'S MISS EMBLAZON 616	P A R EMBLAZON 4522	
	P A R EMBLAZON 50	

CED	BW	WW	YW	SC	Milk	SW	SF	SB
+1	+2.2	+44	+80	+0.72	+23	+39	+74	+110

BW: 82	Adj. WW: 673	WWR: 92
1-5 Star Rating • C/E: 3-5 Hfirs/1-2 Cows		
C/E	Fleshing	Disposition
3	4	4

• This Rocketeer son is backed by a moderate, easy-fleshing, and highly productive female.

Lot 98 **AMDAHL ROCKETEER 0129**

BD: 02/05/20 Reg No: 19788322 Tattoo: 0129

MUSGRAVE AVIATOR	KOUPALS B&B IDENTITY	CW
AMDAHL'S ROCKETEER 636	MCATL FOREVER LADY 1429-138	+26
AMDAHL ERICA 431-465	G A R PROPHET	Marb
	S A 1117 HOMER 431 228	+0.44
JAUER MODERATOR 297 523	O C C MODERATOR 825M	RE
AMDAHL DIXIE MODERATOR 828	JAUER HELMSMAN 784 297	+0.54
JAUER HOMER 550 109	O C C HOMER 650H	
	JAUER TRAVELodge 550 327	

CED	BW	WW	YW	SC	Milk	SW	SF	SB
+3	+2.4	+45	+77	+0.61	+23	+42	+68	+110

BW: 91	Adj. WW: 703	WWR: 96
1-5 Star Rating • C/E: 3-5 Hfirs/1-2 Cows		
C/E	Fleshing	Disposition
1	4	4

• Rocketeer certainly stamps his bulls with thickness and herd bull look.

Angus Bulls

Lot 99 **AMDAHL SOUTHERN CHARM 0143**

BD: 02/13/20		Reg No: 19799323		Tattoo: 0143	
SILVEIRAS CONVERSION 8064	BT CROSSOVER 758N	CW			
BUBS SOUTHERN CHARM AA31	EXG SARAS DREAM S609 R3	+25			
HICKORY HILL ERICA 009	CONNEALY STIMULUS 8419	Marb			
BVC AVIATOR 4007	HICKORY HILL ERICA TA32	+0.63			
AMDAHL MISS AVIATOR 418-653	MUSGRAVE AVIATOR	RE			
AMDAHL MISS CONSENSUS 72-418	BVC ROGUE PRIDE CC7 228	+0.59			
	SCHELSKE CONSENSUS 2327A				
	PAR TRAVELING WESTWIND 72				

CED	BW	WW	YW	SC	Milk	SW	SF	\$B
+7	+1.8	+51	+86	+1.53	+24	+52	+64	+115
1-5 Star Rating • C/E: 3-5 Hfirs/1-2 Cows								
BW: 83	Adj. WW: 699	WWR: 95	C/E	Fleshing	Disposition			
			3	4	4			

• A thick Southern Charm backed by the great West Wind 72 cow that left her mark for 18 seasons.

Lot 100 **AMDAHL SOUTHERN CHARM 0146**

BD: 02/17/20		Reg No: 19799321		Tattoo: 0146	
SILVEIRAS CONVERSION 8064	BT CROSSOVER 758N	CW			
BUBS SOUTHERN CHARM AA31	EXG SARAS DREAM S609 R3	+26			
HICKORY HILL ERICA 009	CONNEALY STIMULUS 8419	Marb			
SK MR UPDATE 1	HICKORY HILL ERICA TA32	+0.38			
AMDAHL DIXIE UPDATE 014-6173	TOKACH UPDATE 9009	RE			
AMDAHL DIXIE 7402 014	S K MISS TRAVEL LOG ELBA 17	+0.68			
	O C C LINEBRED 661L				
	JAUER 173 ANCHOR 2011 7402				

CED	BW	WW	YW	SC	Milk	SW	SF	\$B
+10	-0.1	+48	+87	+1.20	+22	+46	+68	+108
1-5 Star Rating • C/E: 3-5 Hfirs/1-2 Cows								
BW: 75	Adj. WW: 655	WWR: 89	C/E	Fleshing	Disposition			
			4	4	4			

• Recommended for heifers. Very complete future herd bull here.

Lot 101 **AMDAHL RANGE MASTER 0135**

BD: 02/10/20		Reg No: 19788327		Tattoo: 0135	
HA COWBOY UP 5405	HA OUTSIDE 3008	CW			
AMDAHL RANGE MASTER 830	HA BLACKCAP LADY 1602	+34			
AMDAHL MISS BP 380-509	AMDAHL BLOCK PARTY 368	Marb			
CONNEALY BLACK GRANITE	AMDAHL MISS HOMER 172-380	+0.46			
AMDAHL'S MISS BLAZE 041-733	CONNEALY CONSENSUS 7229	RE			
AMDAHL'S MISS BLAZE 272 041	EURAL ELGA OF CONANGA 9109	+0.29			
	O C C LINEBRED 661L				
	P A R HEAVY BLAZE 272				

CED	BW	WW	YW	SC	Milk	SW	SF	\$B
+11	+0.8	+60	+105	+0.56	+19	+54	+71	+112
1-5 Star Rating • C/E: 3-5 Hfirs/1-2 Cows								
BW: 81	Adj. WW: 690	WWR: 94	C/E	Fleshing	Disposition			
			4	5	4			

• Recommended for heifers. 0135 has more Pathfinder cows in his pedigree than any other bull in the offering.



LOT 101 AND 102 SIRE: AMDAHL RANGE MASTER 830

Lot 102 **AMDAHL RANGE MASTER 0110**

BD: 01/30/20		Reg No: 19788304		Tattoo: 0110	
HA COWBOY UP 5405	HA OUTSIDE 3008	CW			
AMDAHL RANGE MASTER 830	HA BLACKCAP LADY 1602	+35			
AMDAHL MISS BP 380-509	AMDAHL BLOCK PARTY 368	Marb			
HERBSTER LAUREL 466	AMDAHL MISS HOMER 172-380	+0.30			
AMDAHL MISS LAUREL 056-6108	S A V MERIT 0616	RE			
AMDAHL MISS TJ HOMER3138 056	LIMESTONE MAY 8195	+0.27			
	P A R HOMER 62				
	K S U MISS SUPER X 3138				

CED	BW	WW	YW	SC	Milk	SW	SF	\$B
+10	-0.8	+51	+93	+0.89	+20	+46	+69	+101
1-5 Star Rating • C/E: 3-5 Hfirs/1-2 Cows								
BW: 63	Adj. WW: 663	WWR: 91	C/E	Fleshing	Disposition			
			5	3	4			

• Recommended for heifers. 0110 is out of a perfect udder, long bodied female.

Lot 103 **AMDAHL SOUTHERN CHARM 0142**

BD: 02/12/20		Reg No: 19799287		Tattoo: 0142	
SILVEIRAS CONVERSION 8064	BT CROSSOVER 758N	CW			
BUBS SOUTHERN CHARM AA31	EXG SARAS DREAM S609 R3	+40			
HICKORY HILL ERICA 009	CONNEALY STIMULUS 8419	Marb			
AMDAHL'S HEAVY DUTY 323	HICKORY HILL ERICA TA32	+0.70			
AMDAHL MISS HEAVY 581-726	W H S LIMELIGHT 64V	RE			
AMDAHL JD MISS BP 026-581	D R BLACKBIRD 133	+0.71			
	CB BLOCK PARTY 156				
	AMDAHL JD MISS ML 821 026				

CED	BW	WW	YW	SC	Milk	SW	SF	\$B
+5	+2.7	+54	+96	+1.90	+25	+49	+81	+139
1-5 Star Rating • C/E: 3-5 Hfirs/1-2 Cows								
BW: 83	Adj. WW: 615	WWR: 84	C/E	Fleshing	Disposition			
			3	4	3			

• Great carcass merit here with this Southern Charm son backed by a picture perfect Heavy Duty daughter.

Hereford Reference Sires



CL 1 DOMINO 269Z 1ET

BD: 01/16/2012 Reg No: 43268052 Tattoo: 269

CL 1 DOMINO 637S 1ET
 CL 1 DOMINO 860U
 CL 1 DOMINETTE 5142R [DOD]

CL 1 DOMINO 590R
 CL 1 DOMINETTE 759T 1ET
 CL 1 DOMINETTE 193L

L1 DOMINO 03396
 CL 1 DOMINETTE 118L
 CL 1 DOMINO 1172L
 CL 1 DOMINETTE 810H
 CL 1 DOMINO 246M
 CL 1 DOMINETTE 258M
 HH ADVANCE 767G 1ET
 CL 1 DOMINETTE 318

CED	BW	WW	YW	MM	M&G	SC	REA	Marb
+1.6	+2.3	+45	+85	+24	+47	+1.0	+0.23	-0.17

He is a real breeding bull that sires quality calves one after another. He offers great length, depth and thickness.



CL 1 DOMINO 6104D

BD: 01/11/2016 Reg No: 43691785 Tattoo: 6104

CL 1 DOMINO 216Z 1ET
 CL 1 DOMINO 4168B 1ET
 CL 1 DOMINETTE 7136T 1ET [DOD]

CL 1 DOMINO 105Y
 CL 1 DOMINETTE 362A
 CL 1 DOMINETTE 1152Y

CL 1 DOMINO 860U
 CL 1 DOMINETTE 759T 1ET
 L1 DOMINO 890061
 CL 1 DOMINETTE 273M 1ET [DOD]
 CL 1 DOMINO 929W
 CL 1 DOMINETTE 9140W 1ET [DOD]
 HH ADVANCE 9016W ET
 CL 1 DOMINETTE 717T

CED	BW	WW	YW	MM	M&G	SC	REA	Marb
+4.8	+0.6	+35	+70	+40	+57	+0.7	+0.18	+0.18

6104 was our pick of the bulls in Cooper's 2017 sale. He is out of a son of our 7136T cow. He adds CE and thickness.



KB L1 DOMINO 623D 1ET

BD: 02/15/2016 Reg No: 43675659 Tattoo: 623

CL 1 DOMINO 9122W 1ET
 CL 1 DOMINO 215Z
 CL 1 DOMINETTE 055X [DOD]

HH ADVANCE 4055P
 HH MISS ADVANCE 1072Y ET
 HH MISS ADVANCE 7003T

CL 1 DOMINO 732T
 CL 1 DOMINETTE 475P
 CL 1 DOMINO 860U
 CL 1 DOMINETTE 7136T 1ET [DOD]
 HH ADVANCE 145L
 HH MISS ADVANCE 9065J [DOD]
 CL 1 DOMINO 320N
 HH MISS ADVANCE 5139R ET

CED	BW	WW	YW	MM	M&G	SC	REA	Marb
+3.3	+2.6	+59	+93	+26	+56	+1.0	+0.27	+0.28

623 had the herd bull look since birth and has turned into an impressive sire any way you look at him. One of the top 215Z sons in the breed.



KB L1 DOMINO 5104B

BD: 09/06/2014 Reg No: 43526961 Tattoo: 5104

HH ADVANCE 7034T ET
 HH ADVANCE 1207Y
 HH MISS ADVANCE 6054S

CL 1 DOMINO 9126J 1ET
 MONTANA MISS 740T
 MONTANA MISS 756

L1 DOMINO 03571
 HH MISS ADVANCE 1088L [DOD]
 CL 1 DOMINO 320N
 HH MISS ADVANCE 4053P
 HH ADVANCE 767G 1ET
 CL 1 DOMINETTE 490 [DOD]
 JA L1 DOMINO 503 2ET
 MONTANA MISS 503

CED	BW	WW	YW	MM	M&G	SC	REA	Marb
+4.5	+3.1	+56	+90	+29	+57	+1.3	+0.28	+0.04

5104 adds length of body and is one of the top 1207 sons in the breed.

Hereford Reference Sires



UPS SENSATION 2504 ET

BD: 08/08/2012 Reg No: P43347360 Tattoo: 2504

UPS DOMINO 3027
CHURCHILL SENSATION 028X
CHURCHILL LADY 7202T ET

RU 20X BOULDER 57G
NJW BW LADYSPORT DEW 78P ET
SADDLE VLY LADYSPORT 120

CL 1 DOMINO 9126J 1ET
UPS MISS DIAMOND 1353
GH RAMBO 279R
CL 1 DOMINETTE 301N
REMITALL KEYNOTE 20X
RU 10A DEW 57D
RU DUSTER 60D
GK LADYSPORT 131A

CED	BW	WW	YW	MM	M&G	SC	REA	Marb
+8.0	-0.8	+53	+83	+42	+68	+1.1	+0.52	+0.01

Sensation adds pigment, thickness and lots of eye appeal.



BEHM 100W CUDA 504C

BD: 03/04/2015 Reg No: P43636764 Tattoo: 504

KCF BENNETT 3008 M326
NJW 735 M326 TRUST 100W ET
NJW P606 72N DAYDREAM 73S

KCF BENNETT 9126J R294
BEHM R294 JASMAN102Y [DOD]
CPH MS WRANGLER 1W [DOD]

RRH MR FELT 3008
KCF MISS 459 F284
PW VICTOR BOOMER P606
NJW 94J DEW 72N
CL 1 DOMINO 9126J 1ET
KCF MISS 3008 N344
JDH 15 WRANGLER 25L
CPH MISS PRINCESS 13H

CED	BW	WW	YW	MM	M&G	SC	REA	Marb
+15	-0.8	+71	+119	+42	+77	+1.7	+0.78	+0.42

Cuda will add true performance with style.



EFBEEF X651 TESTED A250

BD: 03/13/2013 Reg No: P43440096 Tattoo: A250

EFBEEF FOREMOST U208
EFBEEF TFL U208 TESTED X651 ET
EFBEEF P606 MABEL R415

R&R PRIME CUT 6378 ET
EFBEEF 6378 KATE W484
EFBEEF G825 KATE R428

FELTONS SOUNDER 957
EFBEEF G824 KATE S610 ET
EF SCHU-LAR N106 OF 009K 434V
EF G824 MABEL N174 [DOD]
FELTONS 517
FELTONS KATE P62
EF 821C FELLIS G825
FELTONS KATE P38 [DOD]

CED	BW	WW	YW	MM	M&G	SC	REA	Marb
+10.9	-0.3	+61	+95	+27	+58	+1.1	+0.28	+0.64

Few sires will add thickness like Tested 250 will. He also adds CE and strong maternal power.



2-Year-Old Hereford Bulls



Lot 105 **KB L1 DOMINO 915G**
 BD: 01/13/2019 Reg No: 44000739 Tattoo: 915

HH ADVANCE 221 ET	CL 1 DOMINO 955W	Act. BW
HH ADVANCE 4344B	HH MISS ADVANCE 5152R	85
HH MISS ADVANCE 7003T	CL 1 DOMINO 320N	Adj. 205
	HH MISS ADVANCE 5139R ET	720
HH ADVANCE 1207Y	HH ADVANCE 7034T ET	Adj. 365
MONTANA MISS 4111 B	HH MISS ADVANCE 6054S	1270
MONTANA MISS 760T	KB L1 DOMINO 521R	
	MONTANA MISS 524R	

CED	BW	WW	YW	MM	M&G	SC	REA	Marb	CHB
+4.7	+2.8	+55	+87	+30	+58	+0.9	+0.35	+0.00	+105
1-5 Star Rating • C/E: 3-5 Hfirs/1-2 Cows									
C/E	Fleshing	Disposition							
3	4	4							

• 915 has herd bull written all over him. He is a big sided, deep bodied bull that will leave a lasting impact in his future herd.

Lot 107 **TA L1 DOMINO 933G**
 BD: 01/25/2019 Reg No: 44062119 Tattoo: 933

CL 1 DOMINO 4168B 1ET	CL 1 DOMINO 216Z 1ET	Act. BW
CL 1 DOMINO 6104D	CL 1 DOMINETTE 7136T 1ET	74
CL 1 DOMINETTE 362A	CL 1 DOMINO 105Y	Adj. 205
	CL 1 DOMINETTE 1152Y	699
CL 1 DOMINO 269Z 1ET	CL 1 DOMINO 860U	Adj. 365
TA L1 DOMINETTE 768E	CL 1 DOMINETTE 759T 1ET	1261
KB L1 DOMINETTE 194Y	CL 1 DOMINO 795T 1ET	
	KB L1 DOMINETTE 356	

CED	BW	WW	YW	MM	M&G	SC	REA	Marb	CHB
+3.2	+2.1	+45	+81	+32	+55	+0.8	+0.22	+0.06	+102
1-5 Star Rating • C/E: 3-5 Hfirs/1-2 Cows									
C/E	Fleshing	Disposition							
5	4	4							

• 933 is dark red and a very muscular bull with lots of herd bull qualities. 933 was a bull that we used in our later spring breeding and we are excited to see how his progeny develop. He has always been a standout since birth.



Lot 104 **TA L1 DOMINO 954G**
 BD: 02/18/2019 Reg No: 44062124 Tattoo: 954

L1 DOMINO 08469	L1 DOMINO 05516	Act. BW
HH ADVANCE 2158Z	L1 DOMINETTE 99374	87
HH MISS ADVANCE 6188S	CL 1 DOMINO 320N	Adj. 205
	HH MISS ADVANCE 4172P ET	679
CL 1 DOMINO 2121Z	CL 1 DOMINO 9122W 1ET	Adj. 365
MONTANA MISS TA 522C	CL 1 DOMINETTE 924W 1ET	1242
MONTANA MISS 137Y	KB L1 DOMINO 826U	
	MONTANA MISS 5134R	

CED	BW	WW	YW	MM	M&G	SC	REA	Marb	CHB
-0.1	+4.5	+54	+91	+26	+52	+1.3	+0.23	+0.13	+94
1-5 Star Rating • C/E: 3-5 Hfirs/1-2 Cows									
C/E	Fleshing	Disposition							
2	4	5							

• This bull is a big sided, deep bodied bull with loads of performance and great feet. You could build a herd around this standout two year old.

Lot 106 **KB L1 DOMINO 918G**
 BD: 01/17/2019 Reg No: 44000740 Tattoo: 918

CL 1 DOMINO 215Z	CL 1 DOMINO 9122W 1ET	Act. BW
KB L1 DOMINO 623D 1ET	CL 1 DOMINETTE 055X	79
HH MISS ADVANCE 1072Y ET	HH ADVANCE 4055P	Adj. 205
	HH MISS ADVANCE 7003T	702
CL 1 DOMINO 216Z 1ET	CL 1 DOMINO 860U	Adj. 365
CTR L1 DOMINETTE 4061B	CL 1 DOMINETTE 759T 1ET	1242
KB L1 DOMINETTE 8135U	CL 1 DOMINO 592R 1ET	
	KB L1 DOMINETTE 335	

CED	BW	WW	YW	MM	M&G	SC	REA	Marb	CHB
+7.0	+0.7	+48	+79	+24	+48	+1.0	+0.19	+0.21	+107
1-5 Star Rating • C/E: 3-5 Hfirs/1-2 Cows									
C/E	Fleshing	Disposition							
4	4	4							

• One of the very top Hereford two year old bulls in the offering. We are very excited to see where he goes and how he will make a great difference in his new herd.



Lot 108 **TA L1 DOMINO 957G**
 BD: 02/21/2019 Reg No: 44062126 Tattoo: 957

L1 DOMINO 08469	L1 DOMINO 05516	Act. BW
HH ADVANCE 2158Z	L1 DOMINETTE 99374	78
HH MISS ADVANCE 6188S	CL 1 DOMINO 320N	Adj. 205
	HH MISS ADVANCE 4172P ET	701
CL 1 DOMINO 0152K	HH ADVANCE 8093H	Adj. 365
KB L1 DOMINETTE 9172W	CL 1 DOMINETTE 874H 1ET	1262
KB L1 DOMINETTE 701	CL 1 DOMINO 501	
	MCH MS L1 DM 2171 ET	

CED	BW	WW	YW	MM	M&G	SC	REA	Marb	CHB
+5.8	+2.3	+41	+69	+26	+47	+0.8	+0.11	+0.13	+83
1-5 Star Rating • C/E: 3-5 Hfirs/1-2 Cows									
C/E	Fleshing	Disposition							
4	3	4							

• Recommended for heifers. 957 travels very well and will cover lots of country. He will cross extremely well on black Angus cattle.

2-Year-Old Hereford Bulls

Lot 109 **KB L1 DOMINO 958G**
 BD: 02/24/2019 Reg No: 44000744 Tattoo: 958

HH ADVANCE 1013Y ET	HH ADVANCE 4055P	Act. BW
HH ADVANCE 7074E	HH MISS ADVANCE 7003T	86
HH MISS ADVANCE 3015A	HH ADVANCE 0002X	Adj. 205
	HH MISS ADVANCE 1183Y ET	762
CL 1 DOMINO 215Z	CL 1 DOMINO 9122W 1ET	Adj. 365
MONTANA MISS 752E ET	CL 1 DOMINETTE 055X	1330
CL 1 DOMINETTE 617S	HH ADVANCE 3113N 1ET	
	CL 1 DOMINETTE 4180P	

CED	BW	WW	YW	MM	M&G	SC	REA	Marb	CHB
+0.5	+3.9	+64	+96	+30	+62	+1.4	+0.35	+0.18	+103

• 958 is a bull with a lot of future to him. These are superior genetics in this pedigree from both the sire and the dam. 958 has nice shape, has a big middle and has lots of muscle, a great combination to have.

1-5 Star Rating • C/E: 3-5 Hfirs/1-2 Cows

C/E	Fleshing	Disposition
2	4	4

Lot 110 **TA L1 DOMINO 906G**
 BD: 01/08/2019 Reg No: 44062113 Tattoo: 906

HH ADVANCE 1013Y ET	HH ADVANCE 4055P	Act. BW
HH ADVANCE 7074E	HH MISS ADVANCE 7003T	73
HH MISS ADVANCE 3015A	HH ADVANCE 0002X	Adj. 205
	HH MISS ADVANCE 1183Y ET	594
HH ADVANCE 1207Y	HH ADVANCE 7034T ET	Adj. 365
KB L1 DOMINETTE 4102B	HH MISS ADVANCE 6054S	1218
KB L1 DOMINETTE 803U	JA L1 DOMINO 6002S	
	KB L1 DOMINETTE 622	

CED	BW	WW	YW	MM	M&G	SC	REA	Marb	CHB
+6.5	+1.1	+49	+72	+24	+48	+1.4	+0.15	+0.20	+93

• Recommended for heifers. 906 is a thick, deep bodied two year old that will cover lots of country. His dam 4102 has been a standout producer for many years.

1-5 Star Rating • C/E: 3-5 Hfirs/1-2 Cows

C/E	Fleshing	Disposition
4	5	5

Lot 111 **TA L1 DOMINO 919G**
 BD: 01/17/2019 Reg No: 44062116 Tattoo: 919

CL 1 DOMINO 4168B 1ET	CL 1 DOMINO 216Z 1ET	Act. BW
CL 1 DOMINO 6104D	CL 1 DOMINETTE 7136T 1ET	74
CL 1 DOMINETTE 362A	CL 1 DOMINO 105Y	Adj. 205
	CL 1 DOMINETTE 1152Y	662
CL 1 DOMINO 9126J 1ET	HH ADVANCE 767G 1ET	Adj. 365
TA L1 DOMINETTE 738E ET	CL 1 DOMINETTE 490	1231
KB L1 MARKETTE 243	JH MARK 9454 1ET	
	KB L1 DOMINETTE 827	

CED	BW	WW	YW	MM	M&G	SC	REA	Marb	CHB
+5.2	+0.8	+38	+68	+33	+52	+0.8	+0.20	+0.15	+106

• Recommended for heifers. 919 is well structured and travels with ease. His dam is a moderate and thick female with a great udder.

1-5 Star Rating • C/E: 3-5 Hfirs/1-2 Cows

C/E	Fleshing	Disposition
5	4	4

Lot 112 **TA L1 DOMINO 902G ET**
 BD: 01/06/2019 Reg No: 44063147 Tattoo: 902

CL 1 DOMINO 4168B 1ET	CL 1 DOMINO 216Z 1ET	Act. BW
CL 1 DOMINO 6104D	CL 1 DOMINETTE 7136T 1ET	59
CL 1 DOMINETTE 362A	CL 1 DOMINO 105Y	Adj. 205
	CL 1 DOMINETTE 1152Y	604
HH ADVANCE 1207Y	HH ADVANCE 7034T ET	Adj. 365
KB L1 DOMINETTE 376 A	HH MISS ADVANCE 6054S	1240
KB L1 DOMINETTE 167Y	CL 1 DOMINO 795T 1ET	
	KB L1 DOMINETTE 6136	

CED	BW	WW	YW	MM	M&G	SC	REA	Marb	CHB
+0.9	+3.3	+48	+84	+33	+57	+0.9	+0.21	+0.05	+106

• Recommended for heifers. 902 is a long bodied, dark red heifer bull that is backed by the cornerstone Hereford donor cow, Dominette 376.

1-5 Star Rating • C/E: 3-5 Hfirs/1-2 Cows

C/E	Fleshing	Disposition
5	3	5

Lot 113 **TA L1 DOMINO 945G**
 BD: 02/05/2019 Reg No: 44062157 Tattoo: 945

HH ADVANCE 4101B	HH ADVANCE 221 ET	Act. BW
HH ADVANCE 6092D ET	HH MISS ADVANCE 1056Y ET	86
MONTANA MISS 753T	CL 1 DOMINO 592R 1ET	Adj. 205
	MONTANA MISS 306	642
HH ADVANCE 1207Y	HH ADVANCE 7034T ET	Adj. 365
MONTANA MISS 3133 A	HH MISS ADVANCE 6054S	1184
MONTANA MISS 119Y	CL 1 DOMINO 849U	
	MONTANA MISS 973W	

CED	BW	WW	YW	MM	M&G	SC	REA	Marb	CHB
+2.2	+3.3	+48	+75	+28	+52	+1.0	+0.30	+0.08	+99

• 945 is one of the very few 6092 sons in the country and will make tremendous females.

1-5 Star Rating • C/E: 3-5 Hfirs/1-2 Cows

C/E	Fleshing	Disposition
3	3	4



We are offering FREE wintering on the Bulls!

Yearling Hereford Bulls



**LOT
114**

Lot 115 AMDAHL L1 DOMINO 0301H
BD: 01/07/2020 Reg No: 44172600 Tattoo: 0301

CL 1 DOMINO 215Z	CL 1 DOMINO 9122W 1ET	Act. BW
KB L1 DOMINO 623D 1ET	CL 1 DOMINETTE 055X	84
HH MISS ADVANCE 1072Y ET	HH ADVANCE 4055P	Adj. 205
	HH MISS ADVANCE 7003T	790
KB L1 DOMINO 0102X	CL 1 DOMINO 592R 1ET	
TA L1 DOMINETTE 624D	KB L1 DOMINETTE 616	
KB L1 DOMINETTE 656	CL 1 DOMINO 9126J 1ET	
	KB L1 DOMINETTE 353 ET	

CED	BW	WW	YW	MM	M&G	SC	REA	Marb	CHB
+4.1	+2.6	+52	+83	+28	+54	+1.1	+0.28	+0.17	+112

• This high performance 623 son offers exceptional look, frame and is sure to add pounds to his progeny. He earned a weaning ratio of 115. His dam is a perfect udder female that has a bright future ahead of her.

1-5 Star Rating • C/E: 3-5 Hfhrs/1-2 Cows		
C/E	Fleshing	Disposition
3	3	5



**LOT
116**

Lot 117 TA SENSATION 0320H
BD: 001/15/2020 Reg No: 44180300 Tattoo: 0320

CHURCHILL SENSATION 028X	UPS DOMINO 3027	Act. BW
UPS SENSATION 2504 ET	CHURCHILL LADY 7202T ET	86
NJW BW LADYSPORT DEW 78P ET	RU 20X BOULDER 57G	Adj. 205
	SADDLE VLY LADYSPORT 120	746
CL 1 DOMINO 269Z 1ET	CL 1 DOMINO 860U	
TA L1 DOMINETTE 671D	CL 1 DOMINETTE 759T 1ET	
MONTANA MISS 0147X	KB L1 DOMINO 521R	
	JA L1 DOMINETTE 0220	

CED	BW	WW	YW	MM	M&G	SC	REA	Marb	CHB
+0.7	+2.8	+58	+94	+34	+62	+1.0	+0.41	-0.07	+96

• Another thick topped Sensation son that earned a weaning ratio of 109.

1-5 Star Rating • C/E: 3-5 Hfhrs/1-2 Cows		
C/E	Fleshing	Disposition
2	4	4

Lot 114 TA TESTED 0327H
BD: 01/19/2020 Reg No: P44173018 Tattoo: 0327

EFBEEF TFL U208 TESTED X651 ET	EFBEEF FOREMOST U208	Act. BW
EFBEEF X651 TESTED A250	EFBEEF P606 MABEL R415	91
EFBEEF 6378 KATE W484	R&R PRIME CUT 6378 ET	Adj. 205
	EFBEEF G825 KATE R428	819
CL 1 DOMINO 0100X	CL 1 DOMINO 860U	
MONTANA MISS 207 Z	CL1 DOMINETTE 193L	
MONTANA MISS 740T	CL 1 DOMINO 9126J 1ET	
	MONTANA MISS 756	

CED	BW	WW	YW	MM	M&G	SC	REA	Marb	CHB
+1.9	+2.9	+64	+104	+31	+63	+1.2	+0.38	+0.28	+107

• Certainly one of the finest Hereford herd bull prospects to be produced in the last few years. He has lots of pigment around the eyes and is cherry red. 0327 travels very well.

1-5 Star Rating • C/E: 3-5 Hfhrs/1-2 Cows		
C/E	Fleshing	Disposition
2	4	5



**LOT
115**

Lot 116 TA TESTED 0314H
BD: 01/13/2020 Reg No: P44172995 Tattoo: 0314

EFBEEF TFL U208 TESTED X651 ET	EFBEEF FOREMOST U208	Act. BW
EFBEEF X651 TESTED A250	EFBEEF P606 MABEL R415	77
EFBEEF 6378 KATE W484	R&R PRIME CUT 6378 ET	Adj. 205
	EFBEEF G825 KATE R428	791
CHURCHILL SENSATION 028X	UPS DOMINO 3027	
TA L1 DOMINETTE 826F ET	CHURCHILL LADY 7202T ET	
MONTANA MISS 745T	KB L1 DOMINO 454P	
	MONTANA MISS 210	

CED	BW	WW	YW	MM	M&G	SC	REA	Marb	CHB
+6.6	+1.3	+60	+93	+34	+64	+1.3	+0.38	+0.37	+102

• Recommended for heifers. This is the biggest spread Hereford bull in the offering. He earned a weaning ratio of 115.

1-5 Star Rating • C/E: 3-5 Hfhrs/1-2 Cows		
C/E	Fleshing	Disposition
4	4	3



**LOT
117**

Yearling Hereford Bulls

- All full brothers: 0308/0312/0317/0325/0329/0337/0340/0360
- Loads of performance with these eight full brothers. You will not find eight full brothers like these that offer this kind of real world performance along with the strongest maternal traits in any female that we have ever raised.
- Their dam, KB Dominette 376 has been a cornerstone donor cow and has successfully flushed more eggs than any other female in our program. She is a long bodied, perfect footed cow that has the best udder of any female on the ranch.



LOT 118 DAM: KB L1 DOMINETTE 376 A

Lot 118 TA L1 DOMINO 0308H ET
 BD: 01/12/2020 Reg No: 44172620 Tattoo: 0308

CL1 DOMINO 4168B 1ET	CL 1 DOMINO 216Z 1ET	Act. BW
CL 1 DOMINO 6104D	CL 1 DOMINETTE 7136T 1ET	
CL 1 DOMINETTE 362A	CL 1 DOMINO 105Y	Adj. 205
	CL1 DOMINETTE 1152Y	
HH ADVANCE 1207Y	HH ADVANCE 7034T ET	
KB L1 DOMINETTE 376 A	HH MISS ADVANCE 6054S	
KB L1 DOMINETTE 167Y	CL 1 DOMINO 795T 1ET	
	KB L1 DOMINETTE 6136	

CED	BW	WW	YW	MM	M&G	SC	REA	Marb	CHB
+0.9	+3.3	+48	+84	+33	+57	+0.9	+0.21	+0.05	+106
1-5 Star Rating • C/E: 3-5 Hfhrs/1-2 Cows									
						C/E	Fleshing	Disposition	
						3	4	4	

Lot 119 TA L1 DOMINO 0312H ET
 Reg No: 44185348 Tattoo: 0312

CED	BW	WW	YW	MM	M&G	SC	REA	Marb	CHB
+0.9	+3.3	+48	+84	+33	+57	+0.9	+0.21	+0.05	+106
1-5 Star Rating • C/E: 3-5 Hfhrs/1-2 Cows									
Act. BW	Adj. 205					C/E	Fleshing	Disposition	
75	760					4	4	4	



Lot 120 TA L1 DOMINO 0317H ET
 BD: 01/15/2020 Reg No: 44172998 Tattoo: 0317

CED	BW	WW	YW	MM	M&G	SC	REA	Marb	CHB
+0.9	+3.3	+48	+84	+33	+57	+0.9	+0.21	+0.05	+106
1-5 Star Rating • C/E: 3-5 Hfhrs/1-2 Cows									
Act. BW	Adj. 205					C/E	Fleshing	Disposition	
89	741					2	3	4	

Lot 121 TA L1 DOMINO 0325H ET
 BD: 01/18/2020 Reg No: 44173017 Tattoo: 0325

CED	BW	WW	YW	MM	M&G	SC	REA	Marb	CHB
+0.9	+3.3	+48	+84	+33	+57	+0.9	+0.21	+0.05	+106
1-5 Star Rating • C/E: 3-5 Hfhrs/1-2 Cows									
Act. BW	Adj. 205					C/E	Fleshing	Disposition	
76	673					4	4	4	

Lot 122 TA L1 DOMINO 0329H ET
 BD: 01/19/2020 Reg No: 44173019 Tattoo: 0329

CED	BW	WW	YW	MM	M&G	SC	REA	Marb	CHB
+0.9	+3.3	+48	+84	+33	+57	+0.9	+0.21	+0.05	+106
1-5 Star Rating • C/E: 3-5 Hfhrs/1-2 Cows									
Act. BW	Adj. 205					C/E	Fleshing	Disposition	
85	720					3	4	5	

Lot 123 TA L1 DOMINO 0337H ET
 BD: 01/22/2020 Reg No: 44173039 Tattoo: 0337

CED	BW	WW	YW	MM	M&G	SC	REA	Marb	CHB
+0.5	+3.5	+50	+86	+33	+58	+1.0	+0.23	+0.05	+107
1-5 Star Rating • C/E: 3-5 Hfhrs/1-2 Cows									
Act. BW	Adj. 205					C/E	Fleshing	Disposition	
86	741					2	3	3	

Lot 124 TA L1 DOMINO 0340H ET
 BD: 01/24/2020 Reg No: 44173202 Tattoo: 0340

CED	BW	WW	YW	MM	M&G	SC	REA	Marb	CHB
+0.0	+3.7	+49	+86	+33	+57	+0.9	+0.20	+0.05	+105
1-5 Star Rating • C/E: 3-5 Hfhrs/1-2 Cows									
Act. BW	Adj. 205					C/E	Fleshing	Disposition	
88	711					2	4	5	

Lot 125 TA L1 DOMINO 0360H ET
 BD: 03/12/2020 Reg No: 44173213 Tattoo: 0360

CED	BW	WW	YW	MM	M&G	SC	REA	Marb	CHB
+1.1	+3.3	+49	+84	+32	+57	+1.0	+0.19	+0.05	+104
1-5 Star Rating • C/E: 3-5 Hfhrs/1-2 Cows									
Act. BW	Adj. 205					C/E	Fleshing	Disposition	
82	728					3	3	3	

Yearling Hereford Bulls

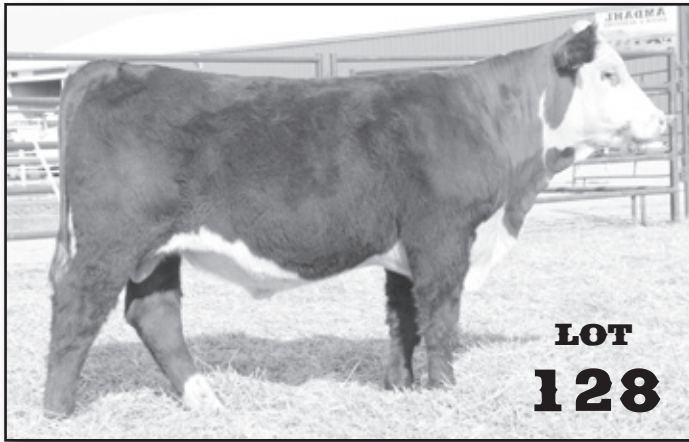
Lot 126 TA SENSATION 0309H
 BD: 01/13/2020 Reg No: P44181920 Tattoo: 0309

CHURCHILL SENSATION 028X UPS SENSATION 2504 ET NJW BW LADYSPORT DEW 78P ET	UPS DOMINO 3027 CHURCHILL LADY 7202T ET RU 20X BOULDER 57G SADDLE VLY LADYSPORT 120	Act. BW 77 Adj. 205 656
CL 1 DOMINO 269Z 1ET TA L1 DOMINETTE 755E KB L1 DOMINETTE 278Z	CL 1 DOMINO 860U CL 1 DOMINETTE 759T 1ET KB L1 DOMINO 6152 KB L1 DOMINETTE 601	

CED	BW	WW	YW	MM	M&G	SC	REA	Marb	CHB
+6.9	-0.1	+46	+77	+33	+56	+1.0	+0.39	-0.07	+98

• Recommended for heifers. 0309 is a thick topped Sensation son that has lots of eye appeal. Can't go wrong here.

1-5 Star Rating • C/E: 3-5 Hfirs/1-2 Cows		
C/E	Fleshing	Disposition
4	4	4



Lot 127 TA L1 DOMINO 0310H
 BD: 01/13/2020 Reg No: U44177362 Tattoo: 0310

HH ADVANCE 1207Y KB L1 DOMINO 5104B MONTANA MISS 740T	HH ADVANCE 7034T ET HH MISS ADVANCE 6054S CL 1 DOMINO 9126J 1ET MONTANA MISS 756 GB L1 DOMINO 935C JA L1 DOMINETTE 9203 KB L1 DOMINO 450P KB L1 DOMINETTE 827	Act. BW 90 Adj. 205 719
JA L1 DOMINO 6002S KB L1 DOMINETTE 803U KB L1 DOMINETTE 622		

CED	BW	WW	YW	MM	M&G	SC	REA	Marb	CHB
+2.2	+3.1	+55	+85	+25	+52	+1.3	+0.28	+0.09	+103

• This 5104 son is backed by one of the most proven Hereford females on the ranch. His dam 803 is a long bodied and great uddered 12 year old female that has many more years of production ahead.

1-5 Star Rating • C/E: 3-5 Hfirs/1-2 Cows		
C/E	Fleshing	Disposition
1	4	4

Lot 128 TA TESTED 0311H
 BD: 01/13/2020 Reg No: P44180622 Tattoo: 0311

EFBEEF TFL U208 TESTED X651 ET EFBEEF X651 TESTED A250 EFBEEF 6378 KATE W484	EFBEEF FOREMOST U208 EFBEEF P606 MABEL R415 R&R PRIME CUT 6378 ET EFBEEF G825 KATE R428 HH ADVANCE 2005Z CL 1 DOMINETTE 7136T 1ET CL 1 DOMINO 2121Z KB L1 DOMINETTE 267 Z	Act. BW 61 Adj. 205 686
KB L1 DOMINO 504C ET TA L1 DOMINETTE 809F TA L1 DOMINETTE 523C		

CED	BW	WW	YW	MM	M&G	SC	REA	Marb	CHB
+11.3	-1.0	+51	+81	+27	+53	+1.1	+0.25	+0.44	+99

• Deep, thick and dark best describes 0311.

1-5 Star Rating • C/E: 3-5 Hfirs/1-2 Cows		
C/E	Fleshing	Disposition
5	5	4

Lot 129 TA L1 DOMINO 0313H ET
 BD: 01/13/2020 Reg No: 44181919 Tattoo: 0313

CL 1 DOMINO 215Z CL 1 DOMINO 420B 1ET CL 1 DOMINETTE 7157T	CL 1 DOMINO 9122W 1ET CL 1 DOMINETTE 055X CL 1 DOMINO 4102P 1ET CL 1 DOMINETTE 439P CL 1 DOMINO 986J CHURCHILL LADY 792 H5 9012Y ADVANCE 501 CHURCHILL LADY 918	Act. BW 87 Adj. 205 701
CHURCHILL MVP 188 CHURCHILL LADY 5143R ET CHURCHILL LADY 103		

CED	BW	WW	YW	MM	M&G	SC	REA	Marb	CHB
+1.5	+2.7	+55	+82	+23	+50	+1.1	+0.44	+0.20	+121

• This 420 son has a royal pedigree and is sure to leave his mark in his future herd. He is supported by a great donor dam, 5143.

1-5 Star Rating • C/E: 3-5 Hfirs/1-2 Cows		
C/E	Fleshing	Disposition
2	4	4

Lot 130 TA L1 DOMINO 0316H
 BD: 01/13/2020 Reg No: U44177363 Tattoo: 0316

HH ADVANCE 1207Y KB L1 DOMINO 5104B MONTANA MISS 740T	HH ADVANCE 7034T ET HH MISS ADVANCE 6054S CL 1 DOMINO 9126J 1ET MONTANA MISS 756 CL 1 DOMINO 9122W 1ET CL 1 DOMINETTE 924W 1ET KB L1 DOMINO 6152 KB L1 DOMINETTE 633	Act. BW 92 Adj. 205 686
CL 1 DOMINO 2121Z TA L1 DOMINETTE 523C KB L1 DOMINETTE 267 Z		

CED	BW	WW	YW	MM	M&G	SC	REA	Marb	CHB
-0.1	+4.3	+58	+97	+28	+56	+1.3	+0.23	+0.01	+120

• Lots of thickness and power best describes 0316.

1-5 Star Rating • C/E: 3-5 Hfirs/1-2 Cows		
C/E	Fleshing	Disposition
1	4	4

Lot 131 TA SENSATION 0323H
 BD: 01/17/2020 Reg No: 44180299 Tattoo: 0323

CHURCHILL SENSATION 028X UPS SENSATION 2504 ET NJW BW LADYSPORT DEW 78P ET	UPS DOMINO 3027 CHURCHILL LADY 7202T ET RU 20X BOULDER 57G SADDLE VLY LADYSPORT 120	Act. BW 79 Adj. 205 753
KB L1 DOMINO 337A TA L1 DOMINETTE 526C KB L1 DOMINETTE 344 A	KB L1 DOMINO 0186X KB 11 DOMINETTE 195Y KB L1 DOMINO 121Y KB L1 DOMINETTE 2109	

CED	BW	WW	YW	MM	M&G	SC	REA	Marb	CHB
+8.4	+0.4	+56	+86	+32	+61	+1.1	+0.41	+0.05	+95

• Recommended for heifers. 0323 earned an outstanding weaning ratio of 110.

1-5 Star Rating • C/E: 3-5 Hfirs/1-2 Cows		
C/E	Fleshing	Disposition
4	4	4

Lot 132 TA L1 ADVANCE 0326H ET
 BD: 01/18/2020 Reg No: 44173059 Tattoo: 0326

CL 1 DOMINO 206M HH ADVANCE 5104R HH MISS ADVANCE 153L	CL 1 DOMINO 9126J 1ET CL 1 DOMINETTE 825H CL 1 DOMINO 986J HH MISS ADVANCE 912J JD BIG ARTHUR 180 IMR L1 MARKETTE 6062 HH ADVANCE 6046F SL MISS DOMINA 003	Act. BW 89 Adj. 205 798
JH MARK 9454 1ET KB L1 MARKETTE 243 KB L1 DOMINETTE 827		

CED	BW	WW	YW	MM	M&G	SC	REA	Marb	CHB
+1.6	+1.6	+48	+74	+27	+51	+1.0	+0.15	+0.04	+95

• This future herd sire earned just under an 800 pound weaning weight. He is backed by the great 243 cow who has fifteen daughters and granddaughters serving in the herd.

1-5 Star Rating • C/E: 3-5 Hfirs/1-2 Cows		
C/E	Fleshing	Disposition
1	3	3

Yearling Hereford Bulls

Lot 133 TA L1 DOMINO 0331H ET

BD: 01/19/2020	Reg No: 44180641	Tattoo: 0331
CL 1 DOMINO 9122W 1ET CL 1 DOMINO 2121Z CL 1 DOMINETTE 924W 1ET	CL 1 DOMINO 732T CL 1 DOMINETTE 475P CL 1 DOMINO 637S 1ET CL 1 DOMINETTE 440P 1ET CL 1 DOMINO 986J CHURCHILL LADY 792 H5 9012Y ADVANCE 501 CHURCHILL LADY 918	Act. BW 82 Adj. 205 671

CED	BW	WW	YW	MM	M&G	SC	REA	Marb	CHB
+0.9	+2.9	+51	+80	+27	+53	+1.0	+0.32	+0.11	+108

• This is a great opportunity to get a standout 2121 son backed by the great donor cow 5143.



LOT 133

Lot 134 TA L1 DOMINO 0334H

BD: 01/20/2020	Reg No: U44177366	Tattoo: 0334
HH ADVANCE 1207Y KB L1 DOMINO 5104B MONTANA MISS 740T	HH ADVANCE 7034T ET HH MISS ADVANCE 6054S CL 1 DOMINO 9126J 1ET MONTANA MISS 756 CL 1 DOMINO 860U CL 1 DOMINETTE 759T 1ET CL 1 DOMINO 795T 1ET KB L1 DOMINETTE 356	Act. BW 78 Adj. 205 694

CED	BW	WW	YW	MM	M&G	SC	REA	Marb	CHB
+2.1	+3.2	+55	+90	+28	+56	+1.1	+0.23	+0.02	+105

• 0334 is loaded with lots of female power in his pedigree. He earned a weaning ratio of 101.



LOT 134

Lot 135 TA SENSATION 0336H

BD: 01/21/2020	Reg No: 44180294	Tattoo: 0336
CHURCHILL SENSATION 028X UPS SENSATION 2504 ET NJW BW LADYSPORT DEW 78P ET	UPS DOMINO 3027 CHURCHILL LADY 720T ET RU 20X BOULDER 57G SADDLE VLY LADYSPORT 120 CL 1 DOMINO 860U CL 1 DOMINETTE 759T 1ET CHURCHILL MVP 188 CHURCHILL LADY 103	Act. BW 72 Adj. 205 706

CED	BW	WW	YW	MM	M&G	SC	REA	Marb	CHB
+5.4	+0.6	+50	+79	+34	+59	+1.0	+0.43	-0.05	+99

• Recommended for heifers. 0336 earned a weaning ratio of 103. His dam, 807 is a thick, deep bodied female with a bright future.

Lot 136 TA L1 DOMINO 0339H

BD: 01/24/2020	Reg No: 44173061	Tattoo: 0339
CL1 DOMINO 4168B 1ET CL 1 DOMINO 6104D CL 1 DOMINETTE 362A	CL 1 DOMINO 216Z 1ET CL 1 DOMINETTE 7136T 1ET CL 1 DOMINO 105Y CL1 DOMINETTE 1152Y CL 1 DOMINO 9122W 1ET CL 1 DOMINETTE 055X KB L1 DOMINO 1202Y KB L1 DOMINETTE 376 A	Act. BW 81 Adj. 205 699

CED	BW	WW	YW	MM	M&G	SC	REA	Marb	CHB
+1.9	+2.4	+52	+91	+34	+60	+1.0	+0.25	+0.19	+112

• 0339 earned a weaning ratio of 102. His dam, 821 is one of the very finest 215 daughters that we have ever raised.

Lot 137 TA TESTED 0342H

BD: 01/25/2020	Reg No: P44173203	Tattoo: 0342
EFBEEF TFL U208 TESTED X651 ET EFBEEF X651 TESTED A250 EFBEEF 6378 KATE W484	EFBEEF FOREMOST U208 EFBEEF P606 MABEL R415 R&R PRIME CUT 6378 ET EFBEEF G825 KATE R428 HH ADVANCE 7034T ET HH MISS ADVANCE 6054S CL 1 DOMINO 849U KB L1 DOMINETTE 991W	Act. BW 86 Adj. 205 686

CED	BW	WW	YW	MM	M&G	SC	REA	Marb	CHB
+4.4	+2.8	+60	+93	+27	+58	+1.1	+0.23	+0.29	+98

• 0342 ranks very high above the breed average in all the most important performance traits.



LOT 137

Yearling Hereford Bulls

Lot 138 TA SENSATION 0343H
 BD: 01/25/2020 Reg No: 44180287 Tattoo: 0343

CHURCHILL SENSATION 028X	UPS DOMINO 3027	Act. BW 81
UPS SENSATION 2504 ET	CHURCHILL LADY 7202T ET	
NJW BW LADYSPORT DEW 78P ET	RU 20X BOULDER 57G	Adj. 205
	SADDLE VLY LADYSPORT 120	710
KB L1 DOMINO 406B	HH ADVANCE 1038Y ET	
TA L1 DOMINETTE 729E	KB 11 DOMINETTE 195Y	
TA L1 DOMINETTE 516C	KB L1 DOMINO 1202Y	
	KB L1 DOMINETTE 376 A	

CED	BW	WW	YW	MM	M&G	SC	REA	Marb	CHB
+4.5	+1.6	+55	+88	+36	+63	+1.1	+0.41	-0.05	+98

• Recommended for heifers. 0343 is another well balanced Sensation son that earned a weaning ratio of 103.

1-5 Star Rating • C/E: 3-5 Hfirs/1-2 Cows		
C/E	Fleshing	Disposition
3	4	4

Lot 139 TA L1 DOMINO 0350H
 BD: 01/30/2020 Reg No: U44177367 Tattoo: 0350

HH ADVANCE 1207Y	HH ADVANCE 7034T ET	Act. BW 83
KB L1 DOMINO 5104B	HH MISS ADVANCE 6054S	
MONTANA MISS 740T	CL 1 DOMINO 9126J 1ET	Adj. 205
	MONTANA MISS 756	715
KB L1 DOMINO 406B	HH ADVANCE 1038Y ET	
TA L1 DOMINETTE 750E	KB 11 DOMINETTE 195Y	
MONTANA MISS TA 518C	CL 1 DOMINO 2215Z 1ET	
	MONTANA MISS 208Z	

CED	BW	WW	YW	MM	M&G	SC	REA	Marb	CHB
+3.1	+3.5	+57	+91	+31	+60	+1.4	+0.20	+0.09	+110

• 0350 has been a standout 5104 son since birth. He earned a weaning ratio of 104 and is out of a great 406B daughter that has great udder structure.

1-5 Star Rating • C/E: 3-5 Hfirs/1-2 Cows		
C/E	Fleshing	Disposition
3	4	5

Lot 140 TA SENSATION 0333H
 BD: 01/20/2020 Reg No: 44180296 Tattoo: 0333

CHURCHILL SENSATION 028X	UPS DOMINO 3027	Act. BW 74
UPS SENSATION 2504 ET	CHURCHILL LADY 7202T ET	
NJW BW LADYSPORT DEW 78P ET	RU 20X BOULDER 57G	Adj. 205
	SADDLE VLY LADYSPORT 120	642
CL 1 DOMINO 592R 1ET	CL 1 DOMINO 9126J 1ET	
KB L1 DOMINETTE 1117 Y	CL 1 DOMINETTE 974J	
KB L1 DOMINETTE 505R	KB L1 DOMINO 737	
	KB L1 DOMINETTE 1106	

CED	BW	WW	YW	MM	M&G	SC	REA	Marb	CHB
+8.3	-0.5	+40	+66	+29	+49	+1.0	+0.35	+0.11	+100

• Recommended for heifers. 0333 is a deep bodied and thick topped bull.

1-5 Star Rating • C/E: 3-5 Hfirs/1-2 Cows		
C/E	Fleshing	Disposition
5	4	4

Lot 141 TA L1 DOMINO 0321H
 BD: 01/17/2020 Reg No: U44177364 Tattoo: 0321

HH ADVANCE 1207Y	HH ADVANCE 7034T ET	Act. BW 89
KB L1 DOMINO 5104B	HH MISS ADVANCE 6054S	
MONTANA MISS 740T	CL 1 DOMINO 9126J 1ET	Adj. 205
	MONTANA MISS 756	624
KB L1 DOMINO 6152	KB L1 DOMINO 218	
KB L1 DOMINETTE 267 Z	L1 DOMINETTE 4136P	
KB L1 DOMINETTE 633	CL1 DOMINO 180L	
	KB AMY 1158	

CED	BW	WW	YW	MM	M&G	SC	REA	Marb	CHB
+0.2	+3.5	+52	+86	+26	+51	+1.1	+0.21	+0.21	+118

• This 5104 son will add consistency, length of body and correctness to his progeny.

1-5 Star Rating • C/E: 3-5 Hfirs/1-2 Cows		
C/E	Fleshing	Disposition
1	4	3

Bid Online!
 If you are unable to attend the sale, you can register to watch or bid online through The Livestock Link by following these instructions:

The Livestock Link
 Videoing • Video Sales • Clerking
 • Bid-by-Click Online Sales

- Visit our website, www.thelivestocklink.com
- Click the "Online Auctions" tab
- Click on "Click Here to Register"
- Enter your e-mail address and password, and fill out all your contact information
- Fill out your Banking Information. If you are only viewing the sale and do not wish to bid, this information can be left blank.
- Check the checkbox at the bottom of the page that says "I'm not a robot" to prove you are a real person
- Click "Register" at the bottom of the page
- You will receive an email with a link to activate your account.
- **Please register to bid at least 24 hours in advance of the sale.**
- Contact Aaron Friedt at (701) 590-9597 for help or with any questions.

You will receive an email when you are approved for bidding. All applications will be reviewed and processed promptly. You will receive a bidder number only after you have made a purchase in the sale, and that number will only be used at that sale. When the sale is completed, please contact the sale owner or manager for instructions of payment and delivery of your purchase.

To use our service, you must have access to High Speed Internet.

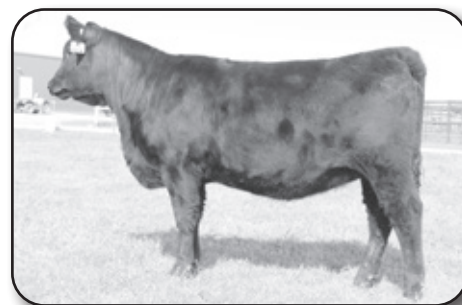
Questions?

→ *Contact Aaron Friedt at (701) 590-9597 or Jared Peterson at (605) 641-7573* ←

www.TheLivestockLink.com

Pick of our Open 2020 Replacement Heifers

We are selling a pick of our Angus heifers and then we are selling a pick of our Hereford heifers. We are offering the pick of our entire 2020 heifer replacement pen. The winning bidder will have two weeks from sale day to pick their choice of the heifer.



Lot 142. PICK OF THE ANGUS OPEN HEIFERS.

Angus Sires	Reg. #
Amdahl All American	17713871
Amdahl Range Master	19274953
Enhance	18170041
Growth Fund	18827828
Phoenix	18636106
Amdahl Ultimate	16267946
Prophet	16295688
Southern Charm	17853196
Amdahl Rocketeer	18529618
Jet Black	18389838
Amdahl Heavy Duty	17716306
Weigh Up 861	19284854
Treasure 7414	18870405

Lot 143. PICK OF THE HEREFORD HEIFERS.

Hereford Sires	Reg. #
Cuda	43636764
Sensation 2504	43347360
KB LI Domino 5104B	43526961
Tested A250	43440096
CLI Domino 6104	43691785
KB LI Domino 623	43675659

Angus Bred Females

Featured Donor Cow



Lot 144		AMDAHL'S BLACKBIRD 120-414	
BD: 03/21/14		Reg No: 17982473	Tattoo: 414
SA 830M MISSING LINK 652 325	O C C MISSING LINK 830M	CW	
SA 652 MISSING LINK 848 620	S A 619J JUST RIGHT 325 433	+19	
S A 841 ANCHOR 620 075	JAUER ANCHOR 841 4101	Marb	
	S A 655 RITO 9FB3 075 745	+0.34	
	A A R REALLY WINDY 1205	RE	
H A R B WINDY 702 JH	H A R B BLACK LADY 073 J H	+0.09	
D R BLACKBIRD 120	TRASK TRAVELER 623		
D R BLACKBIRD 3779	D R BLACKBIRD 746		

CED	BW	WW	YW	SC	Milk	SW	SF	SB
+7	+0.3	+41	+72	+0.36	+34	+58	+56	+86

- 414 is a very special offering in this sale and was flushed successfully this spring. She sells safe bred to Resilient, which is one of the most exciting new sires in the Angus breed. Her daughters are spectacular in the herd and when you see her in person, she speaks for herself.
- She sells safe bred to Sitz Resilient due 4-26-21.



LOT 144 DAUGHTER: SOLD TO SUNRISE ANGUS IN THE 2019 SALE.

Lot 145		AMDAHL ERICA MAY 9106	
BD: 02/03/19		Reg No: 19500991	Tattoo: 9106
CONNEALY IN SURE 8524	MYTTY IN FOCUS	CW	
G A R SURE FIRE	ENTREENA OF CONANGA 657	+34	
CHAIR ROCK 5050 G A R 8086	G A R NEW DESIGN 5050	Marb	
ANGUS S A V PURSUIT 0160	CHAIR ROCK GRID MAKER 2107	+0.52	
AMDAHL ERICA 465-760	S A V PIONEER 7301	RE	
AMDAHL ERICA 431-465	S A V ABIGALE 5650	+0.55	
	G A R PROPHET		
	S A 1117 HOMER 431 228		

CED	BW	WW	YW	SC	Milk	SW	SF	SB
+9	+2.1	+58	+95	+2.80	+36	+74	+64	+105

- 9106 has the potential of donor cow in her future herd. She is backed by the great 465 cow and she has many Pathfinder cows in her pedigree.
- She sells safe bred to GAR Ashland with a female due 1-10-21.

Lot 146		AMDAHL BLACKBIRD 997	
BD: 01/30/19		Reg No: 19493992	Tattoo: 997
MUSGRAVE AVIATOR	KOUPALS B&B IDENTITY	CW	
AMDAHL'S ROCKETEER 636	MCATL FOREVER LADY 1429-138	+16	
AMDAHL ERICA 431-465	G A R PROPHET	Marb	
ANGUS H A R B WINDY 702 JH	S A 1117 HOMER 431 228	+0.59	
D R BLACKBIRD 120	A A R REALLY WINDY 1205	RE	
D R BLACKBIRD 3779	H A R B BLACK LADY 073 J H	+0.50	
	TRASK TRAVELER 623		
	D R BLACKBIRD 746		

CED	BW	WW	YW	SC	Milk	SW	SF	SB
+10	+0.1	+47	+78	+0.28	+27	+55	+51	+100

- 997 is a beautiful, well made Rocketeer daughter that will stand out in her future herd.
- She sells safe bred to GAR Ashland with a female due 1-13-21.

Lot 147		AMDAHL'S PROMISE 716-736	
BD: 01/16/17		Reg No: 18938555	Tattoo: 736
MYTTY IN FOCUS	S A F FOCUS OF E R	CW	
AMDAHL'S ALL AMERICAN 324	MYTTY COUNTESS 906	+23	
D R QUEEN 127	S A V FINAL ANSWER 0035	Marb	
	D R QUEEN 7036	+0.23	
	O C C HOMER 650H	RE	
P A R HOMER 62	P A R AMBUSH LASSIE 1DA	+0.21	
AMDAHL HOMERS PROMISE 72-716	G A R TRAVELER 1489		
PAR TRAVELING WESTWIND 72	P A R TRAVELING WESTWIND D30		

CED	BW	WW	YW	SC	Milk	SW	SF	SB
+13	-0.9	+41	+72	+0.62	+31	+54	+60	+88

- 736 is a moderate, well made All American daughter with a perfect udder.
- She sells safe bred to Southern Charm with a female due 1-11-21.



Angus Bred Females

Lot 148 AMDAHL MISS AVIATOR 418-653

BD: 02/03/16 Reg No: 18508796 Tattoo: 653

MUSGRAVE AVIATOR BVC AVIATOR 4007 BVC ROGUE PRIDE CC7 228	KOUPALS B&B IDENTITY MCATL FOREVER LADY 1429-138 SYDGEN C C & 7 B V C ROGUE PRIDE CONNEALY CONSENSUS 7229 D 104 MONIQUE R585 G A R TRAVELER 1489 P A R TRAVELING WESTWIND D30	CW +10 Marb +0.45 RE +0.36
---	--	---

CED	BW	WW	YW	SC	Milk	SW	SF	SB
+10	-0.4	+34	+59	+1.04	+22	+40	+48	+88

- 653 is a granddaughter of the great West Wind 72 cow that served in the herd 18 seasons. Great mating combination here.
- She sells safe bred to Southern Charm with a female due 1-23-21.



LOT 148 GRANDAM: PAR TRAVELING WESTWIND 72

Lot 149 AMDAHL'S BLACKBIRD 133-410

BD: 03/20/14 Reg No: 17982472 Tattoo: 410

SA 830M MISSING LINK 652 325 SA 652 MISSING LINK 848 620 S A 841 ANCHOR 620 075	O C C MISSING LINK 830M S A 619J JUST RIGHT 325 433 JAUER ANCHOR 841 4101 S A 655 RITO 9FB3 075 745 SITZ TRAVELER 8180 S A V EMULOUS 8145 O C C NEUTON 713 D R RITA TRAVELER 0631	CW +23 Marb +0.02 RE +0.18
---	--	---

CED	BW	WW	YW	SC	Milk	SW	SF	SB
+7	+0.0	+46	+86	+0.76	+30	+55	+65	+83

- 410 has earned a weaning ratio of 101 on her five bull calves. All five of her bull calves have and will make tremendous herd bulls. Half sister to Amdahl's Heavy Duty.
- She sells safe bred to Sitz Resilient with a female due 1-23-21.



LOT 149



LOT 149



LOT 151 DAM: AMDAHL'S DIXIE ERICA 1188-933

Lot 150 AMDAHL JD ANNIE 294-5109

BD: 03/28/15 Reg No: 18510466 Tattoo: 5109

VIN-MAR CONSENSUS 2616 COR BLACKCAP 6224 Z38 MIDLND	CONNEALY CONSENSUS BLUE LILLY OF CONANGA 16 BR MIDLAND VT 1407 NEW DESIGN Z38 JAUER MODERATOR 297 523 JAUER 077 GLADIATOR 982 2011 ROCKN D AMBUSH 1531 N F C ANNIE J755	CW -14 Marb +0.68 RE -0.20
--	--	---

CED	BW	WW	YW	SC	Milk	SW	SF	SB
+9	+0.3	+25	+41	-0.11	+21	+28	+19	+56

- Very exciting mating here. 5109 comes from a long line of tremendous females. She will certainly make a great mother cow in her future herd.
- She sells safe bred to Sitz Resilient with a female due 1-23-21.

Lot 151 AMDAHL DIXIE ERICA 933-6140

BD: 03/13/16 Reg No: 18509114 Tattoo: 6140

TOKACH UPDATE 9009 SK MR UPDATE 1 S K MISS TRAVEL LOG ELBA 17	SITZ UPWARD 307R TOKACH BLACK LADY 4100 CARLSON 004 TRAVEL LOG 513 S K MISS STRATEGY ELBA 10 O C C HOMER 650H O C C DIXIE ERICA 686J BRUSETT MAYOR 59 JUNKET K 547	CW +5 Marb +0.06 RE +0.61
---	---	--

CED	BW	WW	YW	SC	Milk	SW	SF	SB
+12	-1.7	+26	+56	+0.05	+25	+29	+44	+71

- 6140 comes from the great Dixie Erica 933 cow that served in the donor program many years. Can't go wrong with this female.
- She sells safe bred to Amdahl Rocketeer with a female due 1-23-21.

Hereford Bred Females

Lot 152 TA L1 DOMINETTE 729E
 BD: 01/30/2017 Reg No: 43808786 Tattoo: 729

HH ADVANCE 1038Y ET
 KB L1 DOMINO 406B
 KB 11 DOMINETTE 195Y
 KB L1 DOMINO 1202Y
 TA L1 DOMINETTE 516C
 KB L1 DOMINETTE 376 A

HH ADVANCE 8050U ET
 HH MISS ADVANCE 6109S
 HH ADVANCE 9027W
 KB L1 DOMINETTE 4152
 CL 1 DOMINO 7110T
 KB L1 DOMINETTE 647
 HH ADVANCE 1207Y
 KB L1 DOMINETTE 167Y

CED	BW	WW	YW	MM	M&G	SC	REA	Marb	CHB
+3.1	+3.1	+55	+89	+29	+57	+1.0	+0.29	-0.09	+92

- 729 is a daughter of the 516 cow that is one of our highest producing females in the herd.
- She sells safe bred to BCC Uproar 946 due 3-3-21.



LOT 152 SERVICE SIRE

Lot 153 TA L1 DOMINETTE 807F
 BD: 01/07/2018 Reg No: 43967205 Tattoo: 807

CL 1 DOMINO 860U
 CL 1 DOMINO 269Z 1ET
 CL 1 DOMINETTE 759T 1ET
 CHURCHILL MVP 188
 CHURCHILL LADY 5143R ET
 CHURCHILL LADY 103

CL 1 DOMINO 637S 1ET
 CL 1 DOMINETTE 5142R
 CL 1 DOMINO 590R
 CL1 DOMINETTE 193L
 CL 1 DOMINO 986J
 CHURCHILL LADY 792
 H5 9012Y ADVANCE 501
 CHURCHILL LADY 918

CED	BW	WW	YW	MM	M&G	SC	REA	Marb	CHB
+1.8	+2.1	+44	+72	+27	+49	+0.9	+0.31	-0.11	+95

- 807 is a moderate 269Z daughter that will add longevity to her progeny.
- She sells safe bred to BCC Uproar 946 due 2-11-21.

Lot 154 TA L1 DOMINETTE 630D
 BD: 02/19/2016 Reg No: 43672468 Tattoo: 630

CL 1 DOMINO 9122W 1ET
 CL 1 DOMINO 2121Z
 CL 1 DOMINETTE 924W 1ET
 HH ADVANCE 1207Y
 MONTANA MISS 3133 A
 MONTANA MISS 119Y

CL 1 DOMINO 732T
 CL 1 DOMINETTE 475P
 CL 1 DOMINO 637S 1ET
 CL 1 DOMINETTE 440P 1ET
 HH ADVANCE 7034T ET
 HH MISS ADVANCE 6054S
 CL 1 DOMINO 849U
 MONTANA MISS 973W

CED	BW	WW	YW	MM	M&G	SC	REA	Marb	CHB
+0.6	+4.3	+61	+95	+28	+59	+1.3	+0.23	+0.15	+100

- Long bodied, performance female.
- She sells safe bred to BCC Uproar 946 with a female due 1-23-21.

Lot 155 TA L1 DOMINETTE 828F ET
 BD: 01/20/2018 Reg No: 43966469 Tattoo: 828

CL 1 DOMINO 9122W 1ET
 CL 1 DOMINO 2121Z
 CL 1 DOMINETTE 924W 1ET
 JH MARK 9454 1ET
 KB L1 MARKETTE 243
 KB L1 DOMINETTE 827

CL 1 DOMINO 732T
 CL 1 DOMINETTE 475P
 CL 1 DOMINO 637S 1ET
 CL 1 DOMINETTE 440P 1ET
 JD BIG ARTHUR 180
 IMR L1 MARKETTE 6062
 HH ADVANCE 6046F
 SL MISS DOMINA 003

CED	BW	WW	YW	MM	M&G	SC	REA	Marb	CHB
+2.4	+2.5	+48	+76	+46	+2.1	+0.9	+0.12	+0.16	+92

- 828 is an ET daughter out of the great 243 cow that served in the donor program many years.
- She sells safe bred to BCC Uproar 946 with a female due 4-25-21.

Lot 156 TA L1 DOMINETTE 829F ET
 BD: 01/21/2018 Reg No: 43966471 Tattoo: 829

CL 1 DOMINO 9122W 1ET
 CL 1 DOMINO 2121Z
 CL 1 DOMINETTE 924W 1ET
 JH MARK 9454 1ET
 KB L1 MARKETTE 243
 KB L1 DOMINETTE 827

CL 1 DOMINO 732T
 CL 1 DOMINETTE 475P
 CL 1 DOMINO 637S 1ET
 CL 1 DOMINETTE 440P 1ET
 JD BIG ARTHUR 180
 IMR L1 MARKETTE 6062
 HH ADVANCE 6046F
 SL MISS DOMINA 003

CED	BW	WW	YW	MM	M&G	SC	REA	Marb	CHB
+3.0	+2.2	+47	+74	+21	+45	+0.9	+0.12	+0.17	+92

- Great line 1 mating here that will add depth of body and the strongest maternal traits that you will find.
- She sells safe bred to KB L1 Domino 5104 with a female due 2-1-21.



Lot 157 TA L1 DOMINETTE 841F
 BD: 01/24/2018 Reg No: 43966453 Tattoo: 841

CL 1 DOMINO 216Z 1ET
 CL1 DOMINO 4168B 1ET
 CL 1 DOMINETTE 7136T 1ET
 CL 1 DOMINO 2121Z
 TA L1 DOMINETTE 527C
 KB L1 DOMINETTE 1200Y

CL 1 DOMINO 860U
 CL 1 DOMINETTE 759T 1ET
 L1 DOMINO 890061
 CL 1 DOMINETTE 273M 1ET
 CL 1 DOMINO 9122W 1ET
 CL 1 DOMINETTE 924W 1ET
 HH ADVANCE 6001S
 KB L1 DOMINETTE 678

CED	BW	WW	YW	MM	M&G	SC	REA	Marb	CHB
-2.3	+4.2	+51	+89	+33	+58	+1.1	+0.26	+0.11	+110

- Lots of style and maternal traits in this female. She is backed by the great 4168 sire.
- She sells safe bred to TA L1 Domino 933 due 5-17-21.

Hereford Bred Females

Lot 158 **TA L1 DOMINETTE 847F**
 BD: 01/28/2018 Reg No: 43921969 Tattoo: 847

HH ADVANCE 3022A ET
 KB L1 DOMINO 550C
 HH MISS ADVANCE 3247A ET

CL 1 DOMINO 7113T
 TA L1 DOMINETTE 616D
 MONTANA MISS 307 A

HH ADVANCE 0002X
 HH MISS ADVANCE 6155S
 CL 1 DOMINO 105Y
 MONTANA MISS 753T

L1 DOMINO 03396
 CL1 DOMINETTE 166L
 KB L1 DOMINO 121Y
 MONTANA MISS 179Y

CED	BW	WW	YW	MM	M&G	SC	REA	Marb	CHB
-1.3	+3.7	+54	+89	+26	+53	+0.9	+0.35	-0.01	+99

- 847 is a well made and feminine female that will stand out in her future herd.
- She sells safe bred to BCC Uproar 946 due 2-22-21.

Lot 159 **TA L1 DOMINETTE 849F**
 BD: 01/28/2018 Reg No: 43921970 Tattoo: 849

HH ADVANCE 2005Z
 KB L1 DOMINO 504C ET
 CL 1 DOMINETTE 7136T 1ET

CL 1 DOMINO 2121Z
 TA L1 DOMINETTE 650D
 MONTANA MISS 282Z

L1 DOMINO 08469
 HH MISS ADVANCE 8009U
 L1 DOMINO 89006I
 CL 1 DOMINETTE 273M 1ET
 CL 1 DOMINO 9122W 1ET
 CL 1 DOMINETTE 924W 1ET
 KB L1 DOMINO 454P
 MONTANA MISS 520R

CED	BW	WW	YW	MM	M&G	SC	REA	Marb	CHB
+3.3	+2.8	+52	+82	+31	+56	+1.2	+0.26	+0.19	+94

- 849 weaned off one of the very best heifers in the 2020 calf crop.
- She sells safe bred to BCC Uproar 946 with a female due 4-24-21.

Lot 160 **TA L1 DOMINETTE 860F**
 BD: 02/06/2018 Reg No: 43963915 Tattoo: 860

CL 1 DOMINO 860U
 CL 1 DOMINO 269Z 1ET
 CL 1 DOMINETTE 759T 1ET

HH ADVANCE 1207Y
 MONTANA MISS 3133 A
 MONTANA MISS 119Y

CL 1 DOMINO 637S 1ET
 CL 1 DOMINETTE 5142R
 CL 1 DOMINO 590R
 CL1 DOMINETTE 193L

HH ADVANCE 7034T ET
 HH MISS ADVANCE 6054S
 CL 1 DOMINO 849U
 MONTANA MISS 973W

CED	BW	WW	YW	MM	M&G	SC	REA	Marb	CHB
+7.2	+2.2	+49	+82	+31	+55	+1.1	+0.34	+0.09	+115

- 860 is a moderate and well made female that has a great future ahead of her.
- She sells safe bred to BCC Uproar 946 due 2-22-21.

Lot 161 **TA L1 DOMINETTE 951G**
 BD: 02/13/2019 Reg No: 44062141 Tattoo: 951

L1 DOMINO 08469
 HH ADVANCE 2158Z
 HH MISS ADVANCE 6188S

HH ADVANCE 9027W
 KB L1 DOMINETTE 1156Y
 KB L1 DOMINETTE 551R

L1 DOMINO 05516
 L1 DOMINETTE 99374
 CL 1 DOMINO 320N
 HH MISS ADVANCE 4172P ET

L1 DOMINO 0357I
 HH MISS ADVANCE 6074S
 CL 1 DOMINO 3138N 1ET
 KB L1 DOMINETTE 334

CED	BW	WW	YW	MM	M&G	SC	REA	Marb	CHB
+9.3	+1.8	+37	+68	+24	+43	+1.1	+0.07	+0.14	+83

- This will be a great, young female.
- She sells safe bred to BCC Uproar 946 with a female due 1-26-21.



SERVICE SIRE: UPROAR 946



SERVICE SIRE: KB L1 DOMINO 5104



SERVICE SIRE: TA L1 DOMINO 933

Bred Females

These bred females will be sold in groups.

GROUP 1

Cow #	Age	Due Date	Bred to	Reg #
988	1	2-15-21	Really windy sons	19502258
995	1	2-25-21	Really windy sons	19500968
9112	1	2-25-21	Really windy sons	19493996
8130	2	2-13-21	Resource 8373	19307155
8133	2	2-13-21	Range Master 830	19264869

GROUP 2

Cow #	Age	Due Date	Bred to	Reg #
880	2	3-6-21	Rocketeer	19264736
8104	2	2-26-21	Range Master 830	19307007
8113	2	2-22-21	Resource 8373	19264762
8123	2	2-23-21	Resource 8373	19518855

GROUP 3

Cow #	Age	Due Date	Bred to	Reg #
946	1	4-22-21	Really windy sons	19513510
882	2	4-18-21	Rocketeer	19264738
888	2	4-18-21	Rocketeer	19264744
734	3	5-15-21	Rocketeer	18948411
8146	2	5-9-21	Rocketeer	19264879

GROUP 4

Cow #	Age	Due Date	Bred to	Reg #
737	3	3-7-21	Rocketeer	18938557
612	4	3-6-21	Rocketeer	18508793
641	4	3-5-21	Rocketeer	18510201
6173	4	3-6-21	Rocketeer	8509128
517	5	3-8-21	Rocketeer	18315614

GROUP 5

Cow #	Age	Due Date	Bred to	Reg #
765	3	2-18-21	Resource 8373	18959080
632	4	2-8-21	Resource 8373	18513379
579	5	2-17-21	Resource 8373	18315619

GROUP 6

Cow #	Age	Due Date	Bred to	Reg #
6136	4	4-16-21	Rocketeer	18637731
562	5	5-17-21	Rocketeer	18520848
564	5	4-26-21	Resilient	18325265
Com 1	7	5-10-21	Rocketeer	Commercial

GROUP 7

Cow #	Age	Due Date	Bred to	Reg #
998	6	2-13-21	Range Master 830	17990074
1034	6	2-19-21	Range Master 830	17990091
493	7	3-1-21	Range Master 830	17718913
239	8	3-8-21	Rocketeer	17448434
302	8	3-8-21	Rocketeer	17418272
274	8	3-4-21	Rocketeer	17465785

Service Sires



Sitz Resilient 10208
Reg. No.: 19057457



GAR Ashland
Reg. No.: 18217198



BUBS Southern Charm AA31
Reg. No.: *17853196



Amdahl's Rocketeer 636
Reg. No.: *18529618



Bill's Gate Mfg



Four Wheeler Gate will be given away!!

We will have a drawing to give away one of two four-wheeler gates at the end of the sale by drawing a lot number that of a purchased bull

- **Auto Drive-Through • Easy Set-up •**
- **Self Standing • Time Saving •**



PROGRESSIVE CATTLEMEN

RELY ON VITAFERM®

**DON'T FORGET ABOUT
THE OTHER HALF OF THE EQUATION**

Our VitaFerm line is built to benefit more than just your cowherd. Let our products help you get the most out of your bull battery as well.

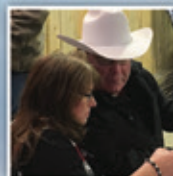
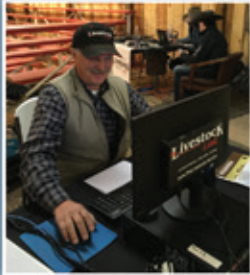
"VitaFerm® ConceptAid® prepares our bulls and females for the breeding season marvelously. We know we're doing all we can for them. It really helps bring them through the stress, and harshness South Dakota weather will bring."
- Tim Amdahl

For more information:
Amdahl Angus and Herefords
Brett Testenson • (320) 226-3915



VITAFERM PERFORMANCE THAT PAYS







21747 Coyote Lane
Piedmont, SD 57769

PRESORTED
FIRST CLASS
U.S. POSTAGE
PAID
PERMIT NO. 618
RAPID CITY, SD

Address Service Requested

Bull and Female Sale
Saturday,
November 21, 2020

Free Wintering on all Bulls
Full 1 year Guarantee

Selling: **100 ANGUS BULLS**
40 HEREFORD BULLS
40 ANGUS BRED FEMALES
10 HEREFORD BRED FEMALES
1 ANGUS DONOR COW
PICK OF 2020 ANGUS HEIFERS
PICK OF 2020 HEREFORD HEIFERS

