



Amdahl

Angus & Hereford

45th Production Sale

SATURDAY, NOVEMBER 20, 2021

1:00 p.m. MST • at the ranch, 12 miles north of Rapid City, SD



Rocketeer

AMDAHL ANGUS & HEREFORD

Look forward to working with you to increase your bottom line

Saturday, November 20, 2021

1:00 PM MT • at the Ranch 12 miles N. of Rapid City, SD

SELLING:

- 93 Angus Bulls
- 23 Hereford Bulls
- 15 Angus Bred Females
- 10 Hereford Bred Females
- 3 Angus Donor Cows
- 14 Open Angus Heifers
- 7 Open Hereford Heifers

**Bulls will sell in
catalog order**



Auctioneer:

Doug Dietterle
605-580-1362

Sale Day Phones:

Tim: 605-929-3717

JD: 605-999-6487

Marcia: 605-929-3712

Sale Representatives:

Art Handel, Jr., <i>Handel Marketing</i>	605-391-8233
Marc Hotchkiss, <i>The Livestock Link</i>	605-490-1513
Jill Hotchkiss, <i>Hereford America</i>	605-490-1409
Scott Dirk, <i>Tri-State Livestock News</i>	605-380-6024
Beau Ravellette, <i>RPI Promotions</i>	605-685-8155
Don Ravellette, <i>RPI Promotions</i>	605-685-5147
Rod Geppert, <i>American Angus Association</i>	605-295-3673
Calli Williams, <i>Wyoming Roundup</i>	605-695-1990

Livestock Videoing • Video Sales • Bid-by-Click Online Sales

The **Livestock**
Link

Bid online!

If you are unable to attend the sale,
you can register to watch or bid online through
The Livestock Link.

Visit www.TheLivestockLink.com

Aaron Friedt 701-590-9597 or

Jared Peterson 605-641-7573

PICTURES WERE TAKEN SECOND WEEK OF OCTOBER

This sale will be broadcast live on the internet.

DVAuction
Broadcasting Real-Time Auctions
Real time bidding & proxy bidding available.

Pelton
Livestock
Marketing & Consulting

Bill Pelton
406-671-5100

visit us on the web to view photos & videos
AmdahlAngusandHereford.com

Tim Amdahl: 605-929-3717 • JD Amdahl: 605-999-6487

Tim & Marcia Amdahl, JD & Annie Amdahl

TJ & Alicia Amdahl

21747 Coyote Lane, Piedmont, SD 57769

TimAmdahl@yahoo.com



Raising beef cattle in South Dakota since 1884 | Registered Cattle since 1972

*Where Quality
Runs
Generations
Deep*

Welcome to the AMDAHL ANGUS & HEREFORD BULL AND FEMALE SALE

Welcome to Amdahl Angus and Hereford 2021 Bull and Female Sale. We thank you, our customers, friends and family for your help throughout the years. We once again feel blessed to not only work with livestock on a daily basis, but continue to do what we love and enjoy. We appreciate your interest in our program and look forward to serving you in your breeding decisions and seed stock needs.

As we're writing this, the upper midwest is receiving some moisture and the cattle market has improved which gives us something to look forward to next year.

This year's calf crop weaned off at record weights with just grass, mineral and two pounds per pair of Nutra-Lix that helps the reproductive growth of our bulls and females. As the weaning weights increase, we feel confident that our genetics continue to excel in our harsh western climate. This year's offering includes six new sires- Ashland, Resilient, Prime Beef and Flagstone and on the Hereford side- Uproar and Cuda that are total outcross genetics to our operation.

The bulls will be semen tested, vaccinated, branded and we will deliver starting March 1st.

Whether you're in the commercial or registered cattle business, we know the key to your success is producing a live calf at birth and the top cut quality calf that weighs down the scales come weaning time, still keeping as our top priority that females are the backbone to any successful operation. That's why we continue to place a huge emphasis on maternal traits, growth and structural soundness.

Intensive use of powerful donors and extensive embryo transfer has allowed us to progressively enhance the phenotypic and performance genetics that our costumers desire.

We hope that you contact us directly if you have any specific questions or if we can be of any assistance at all. As always, we thank you in advance for supporting our program and look forward to seeing you at the ranch on November 20th.

God Bless,

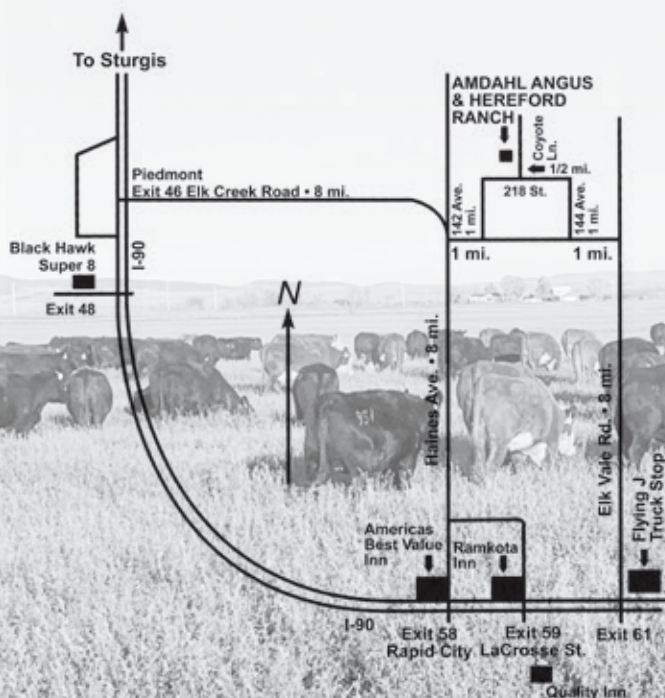
Tim and Marcia, J.D., Annie, Coley and Maverick Amdahl



Tim & Marcia Amdahl

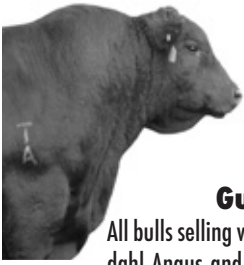


J.D., Annie, Coley, and Maverick Amdahl



Giveaway

Ten to seventeen year olds that attend the sale and whose parents/grandparents purchase an animal that attend the sale can register to win a bred heifer at the end of the sale. Details will be announced after the sale. Youth must be present to win.



Sale Day Information

Guarantee

All bulls selling will be covered 50% by Amdahl Angus and Hereford until November 1, 2022. Buyer must let us know immediately if injury occurs to a bull. If a bull becomes injured and does not recover, we will give you credit towards one replacement bull or credit in next year's sale, less salvage value (\$1,500). Bull needs to be evaluated by a qualified vet before selling. We want to work with our customers in their future success. We are here to help and encourage you in the cattle business. If our customers want additional coverage it will be available sale day.

Wintering Info

Yearling bulls are eligible for our free wintering. If bulls need to be kept longer, we will certainly work with you to deliver bulls at the best time for you and your program. We will just charge our feed costs for the days kept longer than March 1st. Females do not qualify for free wintering. Buyer is responsible for feed cost on females kept longer than one week after the sale. Fall and 2 year old bulls do not qualify for free wintering but will qualify for a \$100 discount if taken home on sale day. If you do wish to have us winter your fall or 2 year old bull, you will need to purchase insurance on them on sale day and the cost for wintering them until March 1st is \$300.

Delivery

March 1st the bulls will be semen tested and delivery will start to central locations and if possible, to your ranch. We are offering free nation wide delivery on purchases of 3 or more bulls and/or females. Purchases of less than 3 animals qualify for 200 mile free delivery (but not on females).

Volume Discount

We offer volume discounts according to the number of bulls you purchase. Purchase 5 or more bulls and receive a 5% discount. Purchase 10 or more bulls and receive a 10% discount. Must be bought by one individual.

Terms and Conditions

Amdahl Angus and Hereford reserves the right to use bulls AI and a select group of bulls naturally in pen breeding. Bulls listed as selling two-thirds interest are ones we are considering using.

**\$100 TAKEN OFF
FALL OR 2-YEAR-OLD
BULLS TAKEN
HOME ON SALE DAY**

Sale Order

Sale order in catalog order.

Marketing Options

It would be our pleasure to help assist you in your marketing needs on cattle sired by our bulls. We have order buyers, feeders, and heifer developers that we would help facilitate contracts between buyers and sellers.

DNA Testing

All Angus bulls have been HD50K tested and tested to be defect free. And also for accuracy in calving ease, maternal and Carcass quality.

Sell your old bulls before our sale and receive \$500 credit

Sell your old bulls before our sale and receive \$500 credit for each bull you sell to be used on your new bulls.

Example A: Sell 3 older bulls before our sale and get \$1,500 credit to be used on 3 new bulls.

Example B: Sell 5 older bulls before our sale and get \$2,500 credit to be used on 5 new bulls.

How to take advantage of this opportunity fully.

Sell 1 older bull @ 1900 pounds per bull x \$0.85 per pound = \$1,615 + \$500 credit + \$420 in feed savings because we feed your new bull = \$2,535 towards a new bull or bulls.

Bottom line, you save a lot of money! This \$500 credit may only be used on bull purchases that are not being purchased with bull credit.

All receipts must be sent (take a picture) to J.D. prior to sale. Please call with any questions.

J.D. 605-999-6487

Inspection of Cattle

Cattle will be available for inspection at the ranch any-time prior to the sale, call to make arrangements.

Health

Interstate health papers furnished on all cattle selling.

EPDs & \$Values

The American Angus Association is now calculating EPDs on a weekly basis using all available carcass harvest data, ultrasound data and the Igenity Angus specific genome profile data. It is possible new data has been submitted between the date the catalog was finalized and sale day which will affect the individual EPDs and \$Value Indexes of the animals selling. If your purchasing decision relies highly on the most current carcass data available, please look up animals of interest on the American Angus Association web page prior to viewing the sale offering.

Supplement Sheets

Will be available sale day with any updates.

We have the strongest set of bulls we have ever offered front to back in our catalog. We would like to show you our bulls and females before sale day. We appreciate you as a customer and look forward to working with you.

OUR 5-STAR SYSTEM

★★★★★

CALVING EASE

5-Star Rating System: Most of our bulls offered for sale could be used on first calf heifers due to shape and size. To help you identify our calving ease proven bulls, we have a 5-Star rated system, 5-Star being our easiest calving. Our 1 and 2 Stars are for cows, because the sires are less proven on heifers. Our 3, 4 & 5-Star rated bulls are out of proven calving ease bloodlines for birth weight and shape. These bulls will work the easiest on heifers.

Lunch

Lunch will be available sale day.

Sight-Unseen Purchases

If you can't attend our sale, we would be happy to help you select and purchase your bull. We know our bulls well and by visiting with you, we feel we can buy a bull that will fit your program. Some people prefer this. Call anytime at 605-929-3717 or 605-999-6487.

Option of payment

Put half down the day of the sale and the rest when you sell calves. Call with any questions.

Additional Insurance

Will be available sale day.

Liability

All persons attending this sale do so at their own risk, legal or otherwise, for their safety or the behavior of the animals. The Owners, Auction Service and Sale Staff assume no liability for property loss or any accidents that may occur.

Announcements

From the block will take precedence over the catalog. Buyers unable to attend may send their bids to the Auction Service, Field Representatives or Auctioneer.



Angus Reference Sires



BALDRIDGE FLAGSTONE F411

BD: 05/09/2018		Reg No: +*19478642		Tattoo: F411		CW	
MOGCK BULLSEYE		AAA +*17882682		MOGCK SURE SHOT		+62	
HOOVER NO DOUBT				MOGCK MARY 1255		Marb	
MISS BLACKCAP ELLSTON J2				SYDGEN C C & 7		+0.98	
STYLES UPGRADE J59				MISS BLACKCAP ELLSTON D154		RE	
BALDRIDGE ISABEL Y69		AAA +*17149410		SITZ UPWARD 307R		+0.62	
BALDRIDGE ISABEL T935				PLAINVIEW LASSIE 71B		Fat	
				BALDRIDGE KABOOM K243 KCF		+0.026	
				BALDRIDGE ISABEL P4527			

CED	BW	WW	YW	SC	Milk	Doc	SW	SB
-1	+2.9	+73	+129	+1.31	+28	+35	+76	+168

Flagstone is new, outcross genetics that will add thickness, docility and maternal cow power.



G A R ASHLAND

BD: 01/31/2015		Reg No: +*18217198		Tattoo: K25		CW	
G A R DAYLIGHT		AAA +*17354178		MCC DAYBREAK		+57	
G A R EARLY BIRD				G A R OBJECTIVE R227		Marb	
G A R PROGRESS 830				G A R PROGRESS		+1.19	
B/R AMBUSH 28				G A R 111 RITO 3346		RE	
CHAIR ROCK AMBUSH 1018		AAA +*16934264		ROCKN D AMBUSH 1531		+1.12	
G A R YIELD GRADE N366				B/R RUBY OF TIFFANY 8250		Fat	
				G A R YIELD GRADE		-0.014	
				G A R 1407 NEW DESIGN 1942			

CED	BW	WW	YW	SC	Milk	Doc	SW	SB
+13	+0.4	+84	+146	+0.91	+24	+25	+87	+177

Ashland is new, outcross genetics that will add eye appeal, calving ease and carcass traits.



SITZ RESILIENT 10208

BD: 02/15/2018		Reg No: *19057457		Tattoo: 10208		CW	
MOHNEN SUBSTANTIAL 272		AAA +*18397542		BENFIELD SUBSTANCE 8506		+67	
SITZ STELLAR 726D				MOHNEN GLYN MAWR ELBA 1758		Marb	
SITZ PRIDE 200B				CONNEALY FINAL PRODUCT		+0.69	
SITZ TOP GAME 561X				SITZ PRIDE 308Y		RE	
SITZ MISS BURGESS 1856		AAA +*18395931		GDAR GAME DAY 449		+0.88	
SITZ MISS BURGESS 4381				SITZ PRIDE 88T		Fat	
				SITZ RAINMAKER 10899		+0.020	
				SITZ MISS BURGESS 1609			

CED	BW	WW	YW	SC	Milk	Doc	SW	SB
+7	+0.4	+83	+140	+1.07	+30	+21	+97	+163

Exciting new herd sire that brings new pedigree into our herd. Resilient will be a cornerstone sire in the Angus breed for calving ease and will produce profitable, maternal genetics.



AMDAHL PRIME BEEF 9100

BD: 01/30/2019		Reg No: *19501071		Tattoo: 9100		CW	
VERMILION SIRLOIN		AAA +*17943466		TC FRANKLIN 619		+60	
HA PRIME CUT 4493				VERMILION LASS 8482		Marb	
HA MISS BLACKCAP 9127				HA PROGRAM 5652		+0.32	
O C C AMDAHL EMBLAZON 709U				H A MISS BLACKCAP 1250		RE	
AMDAHL NIGHTWATCH 821 026		AAA #16866453		O C C EMBLAZON 854E		+0.77	
AMDAHL JD NIGHTWATCH 679-821				K S U MISS ALLIANCE 2138		Fat	
				JAUER NIGHT WATCH 3227 619		-0.025	
				JAUER PICTURE PERFECT 31 679			

CED	BW	WW	YW	SC	Milk	Doc	SW	SB
+6	+3.4	+67	+130	+0.70	+19	+17	+52	+160

New herd sire that is out of one of our most proven females in the herd, Amdahl Nightwatch 026. He will add performance in a moderate frame and will add thickness and muscle structure to his progeny.

Angus Reference Sires



AMDAHL RANGE MASTER 830

BD: 01/13/2018 Reg No: *19274953 Tattoo: 830

HA OUTSIDE 3008
 HA COWBOY UP 5405 AAA *18286467
 HA BLACKCAP LADY 1602

AMDAHL BLOCK PARTY 368
 AMDAHL MISS BP 380-509 AAA #18321040
 AMDAHL MISS HOMER 172-380

KG SOLUTION 0018
 HA EVER LADY 1575
 SITZ UPWARD 307R
 HA BLACKCAP LADY 5515
 CB BLOCK PARTY 156
 AMDAHL'S MISS BLAZE 272 041
 O C C HOMER 650H
 AMDAHL MISS PP 7155-172

CW
+41
Marb
+0.58
RE
+0.39
Fat
-0.026

CED	BW	WW	YW	SC	Milk	Doc	SW	SB
+7	+2.8	+72	+126	+1.03	+16	+5	+58	+131

Range Master adds depth of rib and loads of thickness packed into a moderate frame. He is backed by generations of Pathfinder cows.



AMDAHL'S ROCKETEER 636

BD: 01/27/2016 Reg No: *18529618 Tattoo: 636

KOUPALS B&B IDENTITY
 MUSGRAVE AVIATOR AAA *17264774
 MCATL FOREVER LADY 1429-138

G A R PROPHET
 AMDAHL ERICA 431-465 AAA 17986116
 S A 1117 HOMER 431 228

SITZ UPWARD 307R
 B&B ERICA 605
 S A V FINAL ANSWER 0035
 ALC FOREVER LADY R02S
 C R A BEXTOR 872 5205 608
 G A R OBJECTIVE 1885
 S A 650H HOMER 1117 911
 S A 8210 ANCHOR 228 630

CW
+56
Marb
+0.67
RE
+0.84
Fat
-0.005

CED	BW	WW	YW	SC	Milk	Doc	SW	SB
+2	+1.7	+66	+114	+0.71	+27	+5	+70	+160

Strong maternal bull with outstanding growth and will put length of body into his progeny.



BUBS SOUTHERN CHARM AA31

BD: 10/31/2013 Reg No: *17853196 Tattoo: AA31

BT CROSSOVER 758N
 SILVEIRAS CONVERSION 8064 AAA *16262077
 EXG SARAS DREAM 5609 R3

CONNELY STIMULUS 8419
 HICKORY HILL ERICA 009 AAA *16944100
 HICKORY HILL ERICA TA32

C A FUTURE DIRECTION 5321
 BT ROYAL PRIDE 237G
 BR MIDLAND
 EXAR SARAS DREAM 9809
 H A POWER ALLIANCE 1025
 BLACK CRESA OF CONANGA 5332
 MORGANS DIRECTION 111 9901
 HICKORY HILL ERICA RA58

CW
+47
Marb
+1.00
RE
+0.86
Fat
+0.012

CED	BW	WW	YW	SC	Milk	Doc	SW	SB
+4	+3.1	+68	+115	+2.05	+31	+8	+74	+161

Southern Charm is one of the most popular sires in the breed and adds style, consistency and depth of body.



**THANKS FOR ALL YOUR WORK
 EVERETT MOCKABEE AND SAM SCHROEDER**

AMDAHL'S ULTIMATE 802

BD: 03/19/2008 Reg No: 16267946 Tattoo: 802

O C C HOMER 650H
 O C C LINEBRED 661L AAA #14051770
 O C C DIXIE ERICA 686J

P A R GLADIATOR 270
 P A R ERIKA'S TRAVELER 52 AAA 14354152
 P A R TRAVELING ADO

O C C FOCUS 813F
 O C C DIXIE ERICA 816B
 O C C EMBLAZON 854E
 O C C DIXIE ERICA 816B
 O C C GLADIATOR 612G
 P A R TRAVELERS HEROINE 13
 P A R HEAVY TRAVELER 67
 P R M ERIKAS TOP DAWG 68

CW
+22
Marb
-0.05
RE
-0.02
Fat
+0.017

CED	BW	WW	YW	SC	Milk	Doc	SW	SB
+19	-3.7	+38	+69	+0.68	+20	-1	+40	+84

Amdahl Ultimate is one of the top calving-ease bulls that we have ever used in our history. He consistently adds thickness, style and sure fire calving-ease to his progeny.

Angus Bulls

Lot 1

AMDAHL FLAGSTONE 1036

BD: 1/7/21 Reg No: 20103280 Tattoo: 1036

HOOVER NO DOUBT
BALDRIDGE FLAGSTONE F411
BALDRIDGE ISABEL Y69



CB BLOCK PARTY 156
AMDAHL MISS BP 3130-508
K S U MISS 616 3130

MOGCK BULLSEYE
MISS BLACKCAP ELLSTON J2
STYLES UPGRADE J59
BALDRIDGE ISABEL T935
WERNER WAR PARTY 2417
CB 965 MAINLINE
RITO 616 OF 4B20 6807
K S U MISS LUCY BOY 0126

CW
+59
Marb
+0.98
RE
+0.57

CED	BW	WW	YW	SC	Milk	DOC	\$W	\$B
+3	+1.4	+62	+114	+1.12	+33	+30	+74	+175

BW: 79	Adj. WW: 854	WWR: 107	1-5 Star Rating • C/E: 3-5 Hfhrs/1-2 Cows		
			C/E	Fleshing	Disposition
			3	5	5

- 1036 has a big time herd bull look.
- He is a maternal brother to Amdahl Bruiser who was purchased by Bailey Patterson.
- Note his weaning ratio of 107.
- His dam has a nursing ratio of 5 at 104.
- **Selling two-thirds interest and full possession.**



LOT 1



AMDAHL BRUISER 724
MATERNAL BROTHER OF LOT 1

Lot 2

AMDAHL FLAGSTONE 1095

BD: 1/16/21 Reg No: 20103260 Tattoo: 1095

HOOVER NO DOUBT
BALDRIDGE FLAGSTONE F411
BALDRIDGE ISABEL Y69



S A V PURSUIT 0160
AMDAHL ERICA 465-760
AMDAHL ERICA 431-465

MOGCK BULLSEYE
MISS BLACKCAP ELLSTON J2
STYLES UPGRADE J59
BALDRIDGE ISABEL T935
S A V PIONEER 7301
S A V ABIGALE 5650
G A R PROPHET
S A 1117 HOMER 431 228

CW
+57
Marb
+0.70
RE
+0.55

CED	BW	WW	YW	SC	Milk	DOC	\$W	\$B
-1	+3.1	+69	+114	+1.65	+34	+14	+79	+147

BW: 87	Adj. WW: 838	WWR: 105	1-5 Star Rating • C/E: 3-5 Hfhrs/1-2 Cows		
			C/E	Fleshing	Disposition
			2	4	5

- **Sale Feature**
- 1095 is one of the top Flagstone sons in the offering. This Flagstone son should improve udder quality and longevity in his daughters.
- His dam posts a weaning ratio of 108 on her 3 calves. She recently joined the donor pen.
- **Selling two-thirds interest and full possession.**



LOT 2



AMDAHL ERICA 465-760
DAM OF LOT 2



AMDAHL ERICA 431-465
GRANDAM OF LOT 2

Angus Bulls



Lot 3 AMDAHL GENESIS 1005

BD: 12/27/20 Reg No: 20103266 Tattoo: 1005

HOOVER NO DOUBT
BALDRIDGE FLAGSTONE F411
BALDRIDGE ISABEL Y69

HFD BOK
MOGCK FRONTMAN 1141
AMDAHL JD MISS FM 030-610
AMDAHL'S JD MISS 22 030

MOGCK BULLSEYE
MISS BLACKCAP ELLSTON J2
STYLES UPGRADE J59
BALDRIDGE ISABEL T935
KESSLERS FRONTMAN R001
MOGCK ENTELLO 1446
O C C PROTOTYPE 847P
P A R TRAVELING HOMER 22

CW
+40
Marb
+0.52
RE
+0.40

CED	BW	WW	YW	SC	Milk	DOC	SW	SB
+6	+0.3	+60	+115	+0.71	+13	+28	+46	+138

BW: 83	Adj. WW: 810	WWR: 101	1-5 Star Rating • C/E: 3-5 Hfhrs/1-2 Cows
			C/E Flething Disposition
			3 5 5

- Elevate your calves with quality, pounds and bonus disposition.
- His dam records a nursing ratio of 102 on her 4 calves.
- Selling two-thirds interest and full possession.



Lot 4 AMDAHL RESILIENT 1108

BD: 1/20/21 Reg No: 20105872 Tattoo: 1108

SITZ STELLAR 726D
SITZ RESILIENT 10208
SITZ MISS BURGESS 1856

HFD BOK
S A V PURSUIT 0160
AMDAHL BLACKBIRD ET 460-745
AMDAHL BLACKBIRD 148-460

MOHNNEN SUBSTANTIAL 272
SITZ PRIDE 2008
SITZ TOP GAME 561X
SITZ MISS BURGESS 4381
S A V PIONEER 7301
S A V ABIGALE 5650
G A R PROPHET
D R BLACKBIRD 148

CW
+52
Marb
+0.36
RE
+0.89

CED	BW	WW	YW	SC	Milk	DOC	SW	SB
+7	+0.7	+71	+123	-0.56	+41	+4	+93	+125

BW: 81	Adj. WW: 844	WWR: 106	1-5 Star Rating • C/E: 3-5 Hfhrs/1-2 Cows
			C/E Flething Disposition
			4 4 4

- Recommended for heifers or cows.
- 1108 is a big outlined Resilient son backed by generations of Pathfinders.
- His dam posts a nursing ratio of 104 on her 3 calves.
- Selling two-thirds interest and full possession.

WE WERE VERY BLESSED TO WIN CHAMPION PEN OF BULLS AT THE FAITH STOCK SHOW AND CENTRAL STATES FAIR IN AUGUST. THE BULLS THAT WON WERE Sired BY BALDRIDGE FLAGSTONE AND WILL BE OFFERED ALONG WITH 30 OTHER PROGENY BY FLAGSTONE IN OUR NOVEMBER 20 SALE. PLEASE MESSAGE US TO REQUEST MORE SALE INFORMATION.



Angus Bulls

Lot 5 AMDAHL RESILIENT 1109

BD: 1/21/21 Reg No: 20105857 Tattoo: 1109

SITZ STELLAR 726D	MOHNEN SUBSTANTIAL 272	CW
SITZ RESILIENT 10208	SITZ PRIDE 200B	+59
SITZ MISS BURGESS 1856	SITZ TOP GAME 561X	Marb
SPRING COVE RENO 4021	SITZ MISS BURGESS 4381	+0.63
AMDAHL ERICA 544-9116	KM BROKEN BOW 002	RE
AMDAHL ERICA HICKOK 104-544	SPRING COVE LIZA 021	+0.85
	MILL BAR HICKOK 7242	
	D R ERICA 104	

CED	BW	WW	YW	SC	Milk	DOC	\$W	\$B
+10	+0.9	+85	+145	+1.35	+29	+33	+95	+153

BW: 82	Adj. WW: 851	WWR: 107	1-5 Star Rating • C/E: 3-5 Hfhrs/1-2 Cows
			C/E Flething Disposition
			4 4 4

- Recommended for heifers or cows.
- One of the deepest bodied Resilient sons in the offering.
- He ranks in the top 1% for Docility, \$M and \$W.
- His dam Erica 9116 is an ET daughter out of the great 544 cow.
- **Selling two-thirds interest and full possession.**



AMDAHL DIXIE ERICA 1188-933
GRANDAM OF LOT 6

Lot 6 AMDAHL RESILIENT 1055

BD: 1/10/21 Reg No: 20105879 Tattoo: 1055

SITZ STELLAR 726D	MOHNEN SUBSTANTIAL 272	CW
SITZ RESILIENT 10208	SITZ PRIDE 200B	+42
SITZ MISS BURGESS 1856	SITZ TOP GAME 561X	Marb
CONNEALY BLACK GRANITE	SITZ MISS BURGESS 4381	+0.64
AMDAHL DIXIE ERICA ET933-672	CONNEALY CONSENSUS 7229	RE
AMDAHL DIXIE ERICA 1188-933	EURA ELGA OF CONANGA 9109	+0.67
	Q C C LINEBRED 661L	
	K S U MISS MAYOR 1188	

CED	BW	WW	YW	SC	Milk	DOC	\$W	\$B
+14	-0.8	+54	+93	+1.00	+30	+18	+69	+135

BW: 72	Adj. WW: 839	WWR: 105	1-5 Star Rating • C/E: 3-5 Hfhrs/1-2 Cows
			C/E Flething Disposition
			5 5 4

- **Sale Feature**
- Highly recommended for heifers.
- 1055 is one of the very finest Resilient sons to be offered. He is one of the most well rounded EPD bulls in the sale. 1055 is a big sided, long bodied future herd bull with tremendous look.
- He earned a weaning ratio of 105.
- **Selling two-thirds interest and full possession.**



Lot 7 AMDAHL ASHLAND 1086

BD: 1/16/21 Reg No: 20105832 Tattoo: 1086

G A R EARLY BIRD	G A R DAYLIGHT	CW
G A R ASHLAND	G A R PROGRESS 830	+36
CHAIR ROCK AMBUSH 1018	B/R AMBUSH 28	Marb
CB BLOCK PARTY 156	G A R YIELD GRADE N366	+1.00
AMDAHL'S TJ MISS BP 907-3105	WERNER WAR PARTY 2417	RE
AMDAHL'S MISS BLAZE 608-907	CB 965 MAINLINE	+0.91
	O C C MISSING LINK 830M	
	AMDAHL MISS BLAZE HOMER 608	

CED	BW	WW	YW	SC	Milk	DOC	\$W	\$B
+8	+2.8	+74	+119	+0.41	+34	+25	+88	+132

BW: 84	Adj. WW: 845	WWR: 106	1-5 Star Rating • C/E: 3-5 Hfhrs/1-2 Cows
			C/E Flething Disposition
			3 5 4

- **Sale Feature**
- 1086 is used to enhance daughters production and type. Big, long and powerful would describe him best.
- He is a true herd bull kind.
- **Selling two-thirds interest and full possession.**



Angus Bulls

Lot 8 AMDAHL ASHLAND 1046

BD: 1/9/21 Reg No: 20105749 Tattoo: 1046

G A R EARLY BIRD	G A R DAYLIGHT	CW
G A R ASHLAND	G A R PROGRESS 830	+66
CHAIR ROCK AMBUSH 1018	B/R AMBUSH 28	Marb
CONNEALY ARMORY	G A R YIELD GRADE N366	+0.42
AMDAHL ANNIE 911	CONNEALY ARSENAL 2174	RE
AMDAHL MISS HEAVY 592-703	EBBA OF CONANGA 808	+1.19
	AMDAHL'S HEAVY DUTY 323	
	AMDAHL MISS PLATIUM 274-592	

CED	BW	WW	YW	SC	Milk	DOC	\$W	\$B
+12	+1.7	+81	+144	+1.33	+31	+24	+88	+159
1-5 Star Rating • C/E: 3-5 Hfhrs/1-2 Cows								
BW: 75			Adj. WW: 845			WWR: 106		
C/E		Fleshing		Disposition				
5		3		3				

- Highly recommended for heifers.
- 1046 is a large framed Ashland son loaded with performance.
- He earned a weaning ratio of 106.



Lot 9 AMDAHL ASHLAND 1031

BD: 1/6/21 Reg No: 20105823 Tattoo: 1031

G A R EARLY BIRD	G A R DAYLIGHT	CW
G A R ASHLAND	G A R PROGRESS 830	+37
CHAIR ROCK AMBUSH 1018	B/R AMBUSH 28	Marb
MUSGRAVE BIG SKY	G A R YIELD GRADE N366	+1.02
AMDAHL MISS BIG SKY 025 701	CONNEALY EARNAN 076E	RE
AMDAHL'S MISS 3130 025	SAV PRIMROSE 7861	+0.62
	O C C LINEBRED 661L	
	K S U MISS 616 3130	

CED	BW	WW	YW	SC	Milk	DOC	\$W	\$B
+20	-3.3	+58	+115	+0.50	+32	+11	+72	+155
1-5 Star Rating • C/E: 3-5 Hfhrs/1-2 Cows								
BW: 61			Adj. WW: 792			WWR: 99		
C/E		Fleshing		Disposition				
5		4		4				

- Highly recommended for heifers.
- 1031 is the most calving ease bull in the offering.
- 1031 is a big spread bull, starting off at 61 lbs at birth and earning a 205 day weight of 792lbs.
- Note his 21 CED.
- Selling two-thirds interest and full possession.



Lot 10 AMDAHL PRIME BEEF 1022

BD: 1/3/21 Reg No: 20074165 Tattoo: 1022

HA PRIME CUT 4493	VERMILION SIRLOIN	CW
AMDAHL PRIME BEEF 9100	HA MISS BLACKCAP 9127	+57
AMDAHL NIGHTWATCH 821 026	O C C AMDAHL EMBLAZON 709U	Marb
AMDAHL'S ROCKETEER 636	AMDAHL JD NIGHTWATCH 679-821	+0.10
AMDAHL MISS ROCK 554-869	MUSGRAVE AVIATOR	RE
AMDAHL MISS BLK PARTY154-554	AMDAHL ERICA 431-465	+0.70
	CB BLOCK PARTY 156	
	AMDAHL MISS HOMER62 2170-154	

CED	BW	WW	YW	SC	Milk	DOC	\$W	\$B
-1	+3.7	+69	+120	+0.29	+22	+18	+60	+134
1-5 Star Rating • C/E: 3-5 Hfhrs/1-2 Cows								
BW: 79			Adj. WW: 872			WWR: 109		
C/E		Fleshing		Disposition				
2		5		5				

- 1022 is one of the most muscular bulls in the offering with exceptional depth of rib.
- Note his 109 weaning ratio.
- His dam records a nursing ratio of 103 on her 2 calves.
- Selling two-thirds interest and full possession.

Angus Bulls

Lot 11

AMDAHL PRIME BEEF 1008

BD: 12/28/20 Reg No: 20072607 Tattoo: 1008

HA PRIME CUT 4493	VERMILION SIRLOIN	CW
AMDAHL PRIME BEEF 9100	HA MISS BLACKCAP 9127	+50
AMDAHL NIGHTWATCH 821 026	O C C AMDAHL EMBLAZON 709U	Marb
AMDAHL'S ALL AMERICAN 324	AMDAHL JD NIGHTWATCH 679-821	+0.44
AMDAHL MISS AVIATOR 471-899	MYTTY IN FOCUS	RE
AMDAHL MISS BP 154-471	D R QUEEN 127	+0.61
	CB BLOCK PARTY 156	
	AMDAHL MISS HOMER62 2170-154	

CED	BW	WW	YW	SC	Milk	DOC	\$W	\$B
+4	+3.9	+73	+130	+1.70	+24	+11	+66	+141

BW: 74 Adj. WW: 851 WWR: 107			1-5 Star Rating • C/E: 3-5 Hfhrs/1-2 Cows		
C/E	Fleshing	Disposition			
2	5	5			

- This prime beef son stands on excellent feet and should add natural width and fleshing ability.
- Note his 107 weaning ratio.
- His dam records a nursing ratio of 104 on 2 calves.
- **Selling two-thirds interest and full possession.**



LOT
11

Lot 12

AMDAHL PRIME BEEF 1128

BD: 1/29/21 Reg No: 20074238 Tattoo: 1128

HA PRIME CUT 4493	VERMILION SIRLOIN	CW
AMDAHL PRIME BEEF 9100	HA MISS BLACKCAP 9127	+81
AMDAHL NIGHTWATCH 821 026	O C C AMDAHL EMBLAZON 709U	Marb
PRAIRIE PRIDE NEXT STEP 2036	AMDAHL JD NIGHTWATCH 679-821	+0.48
AMDAHL BLACKBIRD 290-7110	SYDGEN 928 DESTINATION 5420	RE
P A R HOMER'S BLACKBIRD 290	FLYING V MISS PRIDE 426	+0.77
	PAR DAKOTA HOMER 05	
	C R R FREIGHTLINER N281	

CED	BW	WW	YW	SC	Milk	DOC	\$W	\$B
+0	+5.5	+91	+158	+1.50	+22	+26	+74	+180

BW: 87 Adj. WW: 942 WWR: 118			1-5 Star Rating • C/E: 3-5 Hfhrs/1-2 Cows		
C/E	Fleshing	Disposition			
1	4	5			

- **Sale Feature**
- 1128 is the top 205 day weight bull in the sale.
- Note his 118 weaning ratio.
- He has 10 EPDs in the top 15% of the breed.
- His donor dam posts a nursing ratio of 108 on her 3 natural calves.
- **Selling two-thirds interest and full possession.**



LOT
12

Sale Day Conference Call

It's as easy as

1. Pre-Register for your buyer number
2. Receive toll free call in # and pin
3. Get last minute instructions for call

Give Bill Pelton a call in advance

"Our goal is to get you in the seats but if you can't make it on sale day, we're fixin' to get you On The Line"

Pelton
Livestock
Marketing & Consulting

406.671.5100 bill@billpelton.com www.BILLPELTON.com

Angus Bulls

Lots 13-17



- Full brothers out of 5117 cow x Flagstone Sire: 1020, 1045, 1061, 1068, 1075
- These 5 ET brothers are extra thick, wide topped and outcrossed.
- Their dam has a beautiful udder, with extra depth of rib. She records a nursing ratio of 102 on her 4 natural calves.

Lot 13 **AMDAHL FLAGSTONE 1075**
 BD: 1/13/21 Reg No: 20103276 Tattoo: 1075

HOOPER NO DOUBT BALDRIDGE FLAGSTONE F411 BALDRIDGE ISABEL Y69 SK MR UPDATE 1 AMDAHL MISS UPDATE 616-5117 AMDAHL'S MISS EMBLAZON 616	MOGCK BULLSEYE MISS BLACKCAP ELLSTON J2 STYLES UPGRADE J59 BALDRIDGE ISABEL T935 TOKACH UPDATE 9009 S K MISS TRAVEL LOG ELBA 17 P A R EMBLAZON 4522 P A R EMBLAZON 50	CW +45 Marb +0.79 RE +0.38
--	--	---

CED	BW	WW	YW	SC	Milk	DOC	\$W	\$B
-2	+2.6	+62	+113	+0.65	+29	+34	+68	+144

BW: ET Adj. WW: 852 WWR: 100

1-5 Star Rating • C/E: 3-5 Hfhrs/1-2 Cows		
C/E	Fleshing	Disposition
1	4	4



AMDAHL MISS UPDATE 616-5117
DAM OF LOT 13-17

Lot 14 **AMDAHL FLAGSTONE 1045**
 BD: 1/9/21 Reg No: 20103271 Tattoo: 1045

CED	BW	WW	YW	SC	Milk	DOC	\$W	\$B
-9	+4.9	+67	+130	+1.63	+24	+22	+52	+149

HERD BOOK
CW +60
Marb +0.27
RE +0.73

BW: ET Adj. WW: 791 WWR: ET

1-5 Star Rating • C/E: 3-5 Hfhrs/1-2 Cows		
C/E	Fleshing	Disposition
1	4	4

Lot 15 **AMDAHL FLAGSTONE 1061**
 BD: 1/11/21 Reg No: 20103273 Tattoo: 1061

CED	BW	WW	YW	SC	Milk	DOC	\$W	\$B
-2	+3.1	+65	+130	+1.33	+28	+36	+60	+151

HERD BOOK
CW +56
Marb +0.31
RE +0.82

BW: ET Adj. WW: 771 WWR: ET

1-5 Star Rating • C/E: 3-5 Hfhrs/1-2 Cows		
C/E	Fleshing	Disposition
1	4	4

Lot 16 **AMDAHL FLAGSTONE 1068**
 BD: 1/12/21 Reg No: 20103275 Tattoo: 1068

CED	BW	WW	YW	SC	Milk	DOC	\$W	\$B
-8	+4.5	+57	+100	+1.37	+27	+28	+52	+110

HERD BOOK
CW +38
Marb +0.29
RE +0.51

BW: ET Adj. WW: 730 WWR: ET

1-5 Star Rating • C/E: 3-5 Hfhrs/1-2 Cows		
C/E	Fleshing	Disposition
1	3	4

Lot 17 **AMDAHL FLAGSTONE 1020**
 BD: 1/2/21 Reg No: 20103268 Tattoo: 1020

CED	BW	WW	YW	SC	Milk	DOC	\$W	\$B
-1	+2.4	+49	+93	+1.54	+24	+28	+47	+131

HERD BOOK
CW +35
Marb +0.64
RE +0.56

BW: ET Adj. WW: 754 WWR: ET

1-5 Star Rating • C/E: 3-5 Hfhrs/1-2 Cows		
C/E	Fleshing	Disposition
2	4	4

Angus Bulls

Lot 18

AMDAHL PRIME BEEF 1035

BD: 1/7/21 Reg No: 20104315 Tattoo: 1035

HA PRIME CUT 4493
AMDAHL PRIME BEEF 9100
AMDAHL NIGHTWATCH 821 026

HEB 501K
G A R PROPHET
AMDAHL QUEEN 709-404
AMDAHL HOMER QUEEN 531-709

VERMILION SIRLOIN
HA MISS BLACKCAP 9127
O C C AMDAHL EMBLAZON 709U
AMDAHL JD NIGHTWATCH 679-821
C R A BEXTOR 872 5205 608
G A R OBJECTIVE 1885
P A R HOMER 62
P A R HEAVY QUEEN RITO 531

CW
+55
Marb
+0.56
RE
+0.50

CED	BW	WW	YW	SC	Milk	DOC	SW	SB
+8	+1.4	+74	+133	+0.72	+27	+25	+80	+136

BW: ET	Adj. WW: 793	WWR: 100
1-5 Star Rating • C/E: 3-5 Hfhrs/1-2 Cows		
C/E	Fleshing	Disposition
4	5	5

Lot 19

AMDAHL PRIME BEEF 1049

BD: 1/9/21 Reg No: 20106017 Tattoo: 1049

CED	BW	WW	YW	SC	Milk	DOC	SW	SB
+13	-0.1	+56	+97	+0.20	+27	+19	+68	+114

HEB 501K	CW	+33	Marb	+0.63	RE	+0.28
----------	----	-----	------	-------	----	-------

BW: ET	Adj. WW: 799	WWR: ET
1-5 Star Rating • C/E: 3-5 Hfhrs/1-2 Cows		
C/E	Fleshing	Disposition
4	4	5

Lot 20

AMDAHL PRIME BEEF 1084

BD: 1/16/21 Reg No: 20106019 Tattoo: 1084

CED	BW	WW	YW	SC	Milk	DOC	SW	SB
+0	+3.5	+66	+113	+1.54	+25	+24	+66	+122

HEB 501K	CW	+43	Marb	+0.50	RE	+0.39
----------	----	-----	------	-------	----	-------

BW: ET	Adj. WW: 823	WWR: ET
1-5 Star Rating • C/E: 3-5 Hfhrs/1-2 Cows		
C/E	Fleshing	Disposition
2	5	5

Lot 21

AMDAHL PRIME BEEF 1082

BD: 1/15/21 Reg No: 20104323 Tattoo: 1082

CED	BW	WW	YW	SC	Milk	DOC	SW	SB
+12	+1.5	+47	+88	-0.12	+31	+24	+59	+113

HEB 501K	CW	+27	Marb	+0.60	RE	+0.20
----------	----	-----	------	-------	----	-------

BW: ET	Adj. WW: 804	WWR: ET
1-5 Star Rating • C/E: 3-5 Hfhrs/1-2 Cows		
C/E	Fleshing	Disposition
3	5	5

Lot 22

AMDAHL PRIME BEEF 1074

BD: 1/13/21 Reg No: 20104319 Tattoo: 1074

CED	BW	WW	YW	SC	Milk	DOC	SW	SB
+9	+0.7	+56	+112	+0.31	+32	+16	+67	+133

HEB 501K	CW	+47	Marb	+0.50	RE	+0.43
----------	----	-----	------	-------	----	-------

BW: ET	Adj. WW: 720	WWR: ET
1-5 Star Rating • C/E: 3-5 Hfhrs/1-2 Cows		
C/E	Fleshing	Disposition
3	4	4

Lot 23

AMDAHL PRIME BEEF 1134

BD: 1/30/21 Reg No: 20074250 Tattoo: 1134

CED	BW	WW	YW	SC	Milk	DOC	SW	SB
+13	+0.4	+60	+116	+0.82	+29	+14	+70	+121

HEB 501K	CW	+36	Marb	+0.51	RE	+0.61
----------	----	-----	------	-------	----	-------

BW: 79	Adj. WW: 811	WWR: 102
1-5 Star Rating • C/E: 3-5 Hfhrs/1-2 Cows		
C/E	Fleshing	Disposition
4	4	4

- Full brothers out of 404 cow x Prime Beef Sire: 1035, 1049, 1074, 1082, 1084, 1134 – **Sale Feature**
- These 6 full brothers have extra length of body with great disposition.
- 5 of the 6 full brothers can be used on both heifers or cows. They all earned impressive 205 day weights.
- Note 1134 is the natural calf of the 404 cow.
- Their dam, Amdahl Queen 404 earns an impressive weaning ratio of 108 on her 5 natural calves.



**AMDAHL QUEEN
709-404
DAM OF LOTS 18-23**



**AMDAHL HOMER
QUEEN 531-709
GRANDAM OF LOTS 18-23**



Angus Bulls



Lot 24 AMDAHL SOUTHERN CHARM 1004

BD: 12/27/20 Reg No: 20106002 Tattoo: 1004

SILVEIRAS CONVERSION 8064	BT CROSSOVER 758N	CW
BUBS SOUTHERN CHARM AA31	EXG SARAS DREAM S609 R3	+63
HICKORY HILL ERICA 009	CONNEALY STIMULUS 8419	Marb
CTS REMEDY 1T01	HICKORY HILL ERICA TA32	+0.57
AMDAHL MISS REMEDY 517-863	CONNEALY THUNDER	RE
AMDAHL MISS HVY DUTY 103-517	CTS 7V03 BELLEMERE MAID 9T02	+0.86
	AMDAHL'S HEAVY DUTY 323	
	AMDAHL MISS ULTIMATE747W-103	

CED	BW	WW	YW	SC	Milk	DOC	SW	SB
-7	+4.5	+83	+141	+2.08	+24	+24	+71	+162

BW: 88	Adj. WW: 850	WWR: 106
1-5 Star Rating • C/E: 3-5 Hfhrs/1-2 Cows		
C/E	Fleshing	Disposition
1	5	5

- 1004 is an upscale and muscular Southern Charm son.
- He earned a weaning ratio of 106.



AMDAHL'S QUEEN B P 709-3101
DAM OF LOT 25

Lot 25 AMDAHL FLAGSTONE 1011

BD: 12/30/20 Reg No: 20103284 Tattoo: 1011

HOOVER NO DOUBT	MOGCK BULLSEYE	CW
BALDRIDGE FLAGSTONE F411	MISS BLACKCAP ELLSTON J2	+40
BALDRIDGE ISABEL Y69	STYLES UPGRADE J59	Marb
CB BLOCK PARTY 156	BALDRIDGE ISABEL T935	+0.34
AMDAHL'S QUEEN B P 709-3101	WERNER WAR PARTY 2417	RE
AMDAHL HOMER QUEEN 531-709	CB 965 MAINLINE	+0.43
	P A R HOMER 62	
	P A R HEAVY QUEEN RITO 531	

CED	BW	WW	YW	SC	Milk	DOC	SW	SB
+3	+2.4	+58	+100	+0.26	+27	+29	+62	+110

BW: 84	Adj. WW: 814	WWR: 102
1-5 Star Rating • C/E: 3-5 Hfhrs/1-2 Cows		
C/E	Fleshing	Disposition
2	4	4

- Added length bull with lots of maternal power.
- His dam records a nursing ratio of 103 on her 7 calves.
- Keep all the daughters out of this bull.
- Selling two-thirds interest and full possession.



Lot 26 AMDAHL RANGE MASTER 1028

BD: 1/5/21 Reg No: 20069961 Tattoo: 1028

HA COWBOY UP 5405	HA OUTSIDE 3008	CW
AMDAHL RANGE MASTER 830	HA BLACKCAP LADY 1602	+61
AMDAHL MISS BP 380-509	AMDAHL BLOCK PARTY 368	Marb
SK MR UPDATE 1	AMDAHL MISS HOMER 172-380	+0.66
AMDAHL BLKBRD UPDATE290-6166	TOKACH UPDATE 9009	RE
P A R HOMER'S BLACKBIRD 290	S K MISS TRAVEL LOG ELBA 17	+0.34
	PAR DAKOTA HOMER 05	
	C R R FREIGHTLINER N281	

CED	BW	WW	YW	SC	Milk	DOC	SW	SB
+2	+4.9	+85	+155	+1.21	+30	+16	+78	+153

BW: 88	Adj. WW: 884	WWR: 111
1-5 Star Rating • C/E: 3-5 Hfhrs/1-2 Cows		
C/E	Fleshing	Disposition
1	5	5

- 1028 will add real world performance.
- Note his 111 weaning ratio.
- His full brother was selected by Wyatt Mollman in our 2020 sale.
- 1028's dam records an impressive nursing ratio of 109 on her 4 calves.
- Selling two-thirds interest and full possession.



Angus Bulls

Lot 27 **AMDAHL ASHLAND 1059**

BD: 1/11/21	Reg No: 20105829	Tattoo: 1059
G A R EARLY BIRD	G A R DAYLIGHT	CW
G A R ASHLAND	G A R PROGRESS 830	+33
CHAIR ROCK AMBUSH 1018	B/R AMBUSH 28	Marb
P A R DAKOTA MODERATOR 341	G A R YIELD GRADE N366	+0.47
PAR MODERN LASSIE 143	PAR MODERATOR'S BROADSIDE 09	RE
P A R BROADSIDE LASSIE 401	P A R MODERATE EMBLAZON 49	+0.58
	PAR DAKOTA HOMER 05	
	PAR LASSIE 185	

CED	BW	WW	YW	SC	Milk	DOC	\$W	\$B
+6	+1.0	+53	+94	+0.23	+22	+17	+54	+125

BW: 82	Adj. WW: 802	WWR: 100
1-5 Star Rating • C/E: 3-5 Hfhrs/1-2 Cows		
C/E	Fleshing	Disposition
3	5	3

- Recommended for heifers or cows.
- This Ashland son should improve udder quality and longevity in his daughters.
- His dam is a moderate framed female that has excellent feet and udder quality.



LOT
27

Lot 28 **AMDAHL ASHLAND 1063**

BD: 1/11/21	Reg No: 20105816	Tattoo: 1063
G A R EARLY BIRD	G A R DAYLIGHT	CW
G A R ASHLAND	G A R PROGRESS 830	+78
CHAIR ROCK AMBUSH 1018	B/R AMBUSH 28	Marb
G A R SURE FIRE	G A R YIELD GRADE N366	+0.67
AMDAHL ABIGALE 990	CONNEALY IN SURE 8524	RE
AMDAHL MISS PURSUIT 681-714	CHAIR ROCK 5050 G A R 8086	+1.42
	S A V PURSUIT 0160	
	S A 322 GLORY 681 339	

CED	BW	WW	YW	SC	Milk	DOC	\$W	\$B
+10	+1.2	+78	+144	+0.87	+27	+27	+80	+199

BW: 73	Adj. WW: 835	WWR: 105
1-5 Star Rating • C/E: 3-5 Hfhrs/1-2 Cows		
C/E	Fleshing	Disposition
5	4	4

- Highly recommended for heifers.
- This calving ease deluxe bull is an EPD powerhouse combined with strong maternal merit.
- He ranks in the top 1% for Ribeye, \$F, RADG and \$B.
- He earned a weaning ratio of 105.



JET BLACK 093
MATERNAL BROTHER OF LOT 29



ROCKETEER 636
MATERNAL BROTHER OF LOT 29

Lot 29 **AMDAHL ASHLAND 1067**

BD: 1/12/21	Reg No: 20107716	Tattoo: 1067
G A R EARLY BIRD	G A R DAYLIGHT	CW
G A R ASHLAND	G A R PROGRESS 830	+54
CHAIR ROCK AMBUSH 1018	B/R AMBUSH 28	Marb
G A R PROPHET	G A R YIELD GRADE N366	+0.80
AMDAHL ERICA 431-465	C R A BEXTOR 872 5205 608	RE
S A 1117 HOMER 431 228	G A R OBJECTIVE 1885	+0.86
	S A 650H HOMER 1117 911	
	S A 8210 ANCHOR 228 630	

CED	BW	WW	YW	SC	Milk	DOC	\$W	\$B
+4	+3.1	+82	+136	+0.39	+28	+14	+85	+151

BW: 92	Adj. WW: 809	WWR: 100
1-5 Star Rating • C/E: 3-5 Hfhrs/1-2 Cows		
C/E	Fleshing	Disposition
1	4	3

- Sale Feature
- This ET son out of the great Erica 465 has exceptional look and style.
- His dam posts a nursing ratio of 111 on her 4 natural calves.
- Selling two-thirds interest and full possession.



AMDAHL ERICA 431-465
DAM OF LOT 29

Angus Bulls

Lot 30

AMDAHL FLAGSTONE 1080

BD: 1/14/21 Reg No: 20103262 Tattoo: 1080

HOOVER NO DOUBT BALDRIDGE FLAGSTONE F411 BALDRIDGE ISABEL Y69 (RED BONE) MUSGRAVE BIG SKY AMDAHL ERICA 543-7127 PAR BROADSIDE ECHELON 543	MOGCK BULLSEYE MISS BLACKCAP ELLSTON J2 STYLES UPGRADE J59 BALDRIDGE ISABEL T935 CONNEALY EARNAN 076E SAV PRIMROSE 7861 P A R DAKOTA BROADSIDE 261 P A R ERICA'S ECHELON 301	CW +51 Marb +0.40 RE +0.41
---	---	---

CED	BW	WW	YW	SC	Milk	DOC	\$W	\$B
+2	+2.9	+66	+111	+1.02	+28	+23	+71	+128

BW: 82 Adj. WW: 846 WWR: 106			1-5 Star Rating • C/E: 3-5 Hfhrs/1-2 Cows		
C/E	Fleshing	Disposition			
2	4	4			

- 1080 is a larger framed Flagstone son with herd bull look.
- Note his 106 weaning ratio.



NEXT GENERATION LUNCH CREW



ANDY AND MADY EBEN WINNING CHAMPION MARKET STEER AT CASTLE ROCK COUNTY FAIR

Lot 31

AMDAHL PRIME BEEF 1085

BD: 1/16/21 Reg No: 20074198 Tattoo: 1085

HA PRIME CUT 4493 AMDAHL PRIME BEEF 9100 AMDAHL NIGHTWATCH 821 026 (RED BONE) AMDAHL'S MVP 040 AMDAHL'S MISS MVP 7197-3152 KSU MISS NEWSLINE 7197	VERMILION SIRLOIN HA MISS BLACKCAP 9127 O C C AMDAHL EMBLAZON 709U AMDAHL JD NIGHTWATCH 679-821 O C C LINEBRED 661L P A R HEAVY QUEEN RITO 531 LEMMON NEWSLINE C804 K S U MISS 602C 3198	CW +40 Marb +0.67 RE +0.45
---	---	---

CED	BW	WW	YW	SC	Milk	DOC	\$W	\$B
+7	+3.7	+57	+110	+0.96	+22	+11	+45	+135

BW: 83 Adj. WW: 855 WWR: 107			1-5 Star Rating • C/E: 3-5 Hfhrs/1-2 Cows		
C/E	Fleshing	Disposition			
2	4	4			

- 1085 is sharp looking with added rib shape and capacity.
- His dam records a whopping nursing ratio of 108 on her 5 calves and 111 at yearling.



Lot 32

AMDAHL ASHLAND 1087

BD: 1/16/21 Reg No: 20105824 Tattoo: 1087

G A R EARLY BIRD G A R ASHLAND CHAIR ROCK AMBUSH 1018 (RED BONE) MUSGRAVE BIG SKY AMDAHL DIXIE ERICA 069-619 AMDAHL DIXIE ERICA 711P 069	G A R DAYLIGHT G A R PROGRESS 830 B/R AMBUSH 28 G A R YIELD GRADE N366 CONNEALY EARNAN 076E SAV PRIMROSE 7861 P A R HOMER 62 O C C DIXIE ERICA 711P	CW +33 Marb +0.96 RE +1.06
--	--	---

CED	BW	WW	YW	SC	Milk	DOC	\$W	\$B
+14	-0.4	+55	+104	-0.12	+21	+18	+56	+154

BW: 74 Adj. WW: 799 WWR: 100			1-5 Star Rating • C/E: 3-5 Hfhrs/1-2 Cows		
C/E	Fleshing	Disposition			
5	4	4			

- Highly recommended for heifers.
- 1087 is a larger framed heifer bull that will add strong carcass traits.



We are offering FREE wintering on the Bulls!

Angus Bulls

Lot 33

AMDAHL ASHLAND 1094

BD: 1/16/21 Reg No: 20105822 Tattoo: 1094

G A R EARLY BIRD G A R ASHLAND CHAIR ROCK AMBUSH 1018 HA COWBOY UP 5405 AMDAHL LADY COWBOY 5063-850 S K MISS BANDO LADY 7A	G A R DAYLIGHT G A R PROGRESS 830 B/R AMBUSH 28 G A R YIELD GRADE N366 HA OUTSIDE 3008 HA BLACKCAP LADY 1602 CARLSON 5175 BANDO 311 S K MISS R TIME LADY A	CW +39 Marb +0.67 RE +0.41
---	---	---

CED	BW	WW	YW	SC	Milk	DOC	\$W	\$B
+9	+1.6	+74	+122	+0.75	+22	+29	+76	+120
BW: 75 Adj. WW: 862 WWR: 108								
1-5 Star Rating • C/E: 3-5 Hfhrs/1-2 Cows								
			C/E	Fleshing	Disposition			
			4	4	3			

- Sale Feature
- Recommended for heifers.
- 1094 is a massive spread, young herd bull that will make a lasting impact in his future herd.
- Selling two-thirds interest and full possession.



Lot 34

AMDAHL FLAGSTONE 1037

BD: 1/7/21 Reg No: 20103265 Tattoo: 1037

HOOVER NO DOUBT BALDRIDGE FLAGSTONE F411 BALDRIDGE ISABEL Y69 AMDAHL'S HEAVY DUTY 323 AMDAHL QUEEN DOLLY 418-707 AMDAHL MISS CONSENSUS 72-418	MOGCK BULLSEYE MISS BLACKCAP ELLSTON J2 STYLES UPGRADE J59 BALDRIDGE ISABEL T935 W H S LIMELIGHT 64V D R BLACKBIRD 133 SCHELSKES CONSENSUS 2327A PAR TRAVELING WESTWIND 72	CW +64 Marb +0.93 RE +0.62
--	---	---

CED	BW	WW	YW	SC	Milk	DOC	\$W	\$B
+9	+1.1	+66	+122	+0.88	+28	+34	+70	+183
BW: 83 Adj. WW: 842 WWR: 105								
1-5 Star Rating • C/E: 3-5 Hfhrs/1-2 Cows								
			C/E	Fleshing	Disposition			
			4	4	4			

- Recommended for heifers and cows.
- 1037 checks all the EPD boxes but most importantly has true herd bull look.
- He posts a weaning ratio of 105.
- His dam joined the donor pen last spring and has earned a nursing ratio of 105 on her 3 natural calves.
- Selling two-thirds interest and full possession.



of bulls sell under \$4,500

More genetic power for your money at
Amdahl Angus and Hereford

Lot 35

AMDAHL RESILIENT 1104

BD: 1/19/21 Reg No: 20105870 Tattoo: 1104

SITZ STELLAR 726D SITZ RESILIENT 10208 SITZ MISS BURGESS 1856 AMDAHL'S ALL AMERICAN 324 AMDAHL MISS JUDY 5138-884 AMDAHL MISS JUDY 5103-5138	MOHNEN SUBSTANTIAL 272 SITZ PRIDE 200B SITZ TOP GAME 561X SITZ MISS BURGESS 4381 MYTTY IN FOCUS D R QUEEN 127 MOHNEN WOLF CREEK 623 R K MISS BANDO JUDY 23	CW +53 Marb +0.55 RE +0.79
---	---	---

CED	BW	WW	YW	SC	Milk	DOC	\$W	\$B
+11	+0.3	+72	+125	+2.34	+31	+8	+84	+137
BW: 68 Adj. WW: 788 WWR: 99								
1-5 Star Rating • C/E: 3-5 Hfhrs/1-2 Cows								
			C/E	Fleshing	Disposition			
			5	4	5			

- Highly recommended for heifers.
- 1104 is bred for calving ease and to make females that will stand the test of time.



Angus Bulls

Lot 36

AMDAHL FLAGSTONE 1106

BD: 1/20/21 Reg No: 20103279 Tattoo: 1106

HOOVER NO DOUBT BALDRIDGE FLAGSTONE F411 BALDRIDGE ISABEL Y69 AMDAHL BLOCK PARTY 368 AMDAHL MISS BP 380-509 AMDAHL MISS HOMER 172-380	MOGCK BULLSEYE MISS BLACKCAP ELLSTON J2 STYLES UPGRADE J59 BALDRIDGE ISABEL T935 CB BLOCK PARTY 156 AMDAHL'S MISS BLAZE 272 041 O C C HOMER 650H AMDAHL MISS PP 7155-172	CW +47 Marb +0.66 RE +0.39
--	---	---

CED	BW	WW	YW	SC	Milk	DOC	\$W	SB
+2	+2.1	+59	+109	+0.92	+31	+16	+63	+136

BW: 84	Adj. WW: 823	WWR: 103	1-5 Star Rating • C/E: 3-5 Hfhrs/1-2 Cows		
C/E	Fleshing	Disposition			
2	4	4			

- 1106 is bred to add pounds at weaning and produce exceptional replacement females.
- He is the maternal brother to Amdahl Range Master 830.
- His dam posts a weaning ratio of 106 on her 5 calves.



AMDAHL MISS BP 380-509
DAM OF LOT 36



RANGE MASTER 830
MATERNAL BROTHER OF LOT 36

Lot 37

AMDAHL FLAGSTONE 1115

BD: 1/22/21 Reg No: 20103277 Tattoo: 1115

HOOVER NO DOUBT BALDRIDGE FLAGSTONE F411 BALDRIDGE ISABEL Y69 R B TOUR OF DUTY 177 AMDAHL BLACKBIRD JD 133-6124 D R BLACKBIRD 133	MOGCK BULLSEYE MISS BLACKCAP ELLSTON J2 STYLES UPGRADE J59 BALDRIDGE ISABEL T935 WERNER WAR PARTY 2417 B A LADY 6807 305 S A V FINAL ANSWER 0035 D R BLACKBIRD 2511	CW +52 Marb +0.84 RE +0.62
--	--	---

CED	BW	WW	YW	SC	Milk	DOC	\$W	SB
-4	+3.6	+70	+124	+1.11	+27	+26	+66	+154

BW: 88	Adj. WW: 856	WWR: 107	1-5 Star Rating • C/E: 3-5 Hfhrs/1-2 Cows		
C/E	Fleshing	Disposition			
1	3	4			

- Use to add frame and added pounds at weaning time.
- His dam posts a nursing ratio of 108 on her 4 calves.



Lot 38

AMDAHL ASHLAND 1054

BD: 1/10/21 Reg No: 20105813 Tattoo: 1054

G A R EARLY BIRD G A R ASHLAND CHAIR ROCK AMBUSH 1018 AMDAHL DIXIE ERICA 943 AMDAHL MISS BLAZE 397-753	G A R DAYLIGHT G A R PROGRESS 830 B/R AMBUSH 28 G A R YIELD GRADE N366 CONNEALY IN SURE 8524 CHAIR ROCK 5050 G A R 8086 O C C BIG TIME 746Z AMDAHL TJ MIS BLAZE 3198-397	CW +54 Marb +1.04 RE +0.89
--	---	---

CED	BW	WW	YW	SC	Milk	DOC	\$W	SB
+7	+1.1	+73	+129	+1.05	+21	+13	+69	+172

BW: 76	Adj. WW: 791	WWR: 99	1-5 Star Rating • C/E: 3-5 Hfhrs/1-2 Cows		
C/E	Fleshing	Disposition			
4	3	3			

- Recommended for heifers or cows.
- 1054 checks all the boxes and will add carcass merit.



Lot 39

AMDAHL RESILIENT 1118

BD: 1/23/21 Reg No: 20105894 Tattoo: 1118

SITZ STELLAR 726D SITZ RESILIENT 10208 SITZ MISS BURGESS 1856 CONNEALY RIGHT ANSWER 85B BR MISS DESIGN B R MISS GEN BY DES 661S	MOHNER SUBSTANTIAL 272 SITZ PRIDE 200B SITZ TOP GAME 561X SITZ MISS BURGESS 4381 CONNEALY RIGHT ANSWER 746 ALLEYA OF CONANGA 85B B R MR GEN BY DES 4002P B R MISS BANDO 466P	CW +48 Marb +0.66 RE +0.49
--	---	---

CED	BW	WW	YW	SC	Milk	DOC	\$W	SB
+3	+2.5	+71	+118	+0.76	+26	+12	+74	+140

BW: 81	Adj. WW: 855	WWR: 107	1-5 Star Rating • C/E: 3-5 Hfhrs/1-2 Cows		
C/E	Fleshing	Disposition			
2	4	3			

- An attractive made bull that will make outstanding females.
- His dam posts a nursing ratio of 102 on her 4 calves.

VIDEOS AND INFORMATION ONLINE AT WWW.AMDAHLANGUSANDHEREFORD.COM

Angus Bulls



THE REINHOLDS HAVE BEEN LOYAL CUSTOMERS AND FRIENDS FOR YEARS

Lot 40 **AMDAHL RANGE MASTER 1129**

BD: 1/29/21 Reg No: 20069967 Tattoo: 1129

HA COWBOY UP 5405 AMDAHL RANGE MASTER 830 AMDAHL MISS BP 380-509	HA OUTSIDE 3008 HA BLACKCAP LADY 1602 AMDAHL BLOCK PARTY 368 AMDAHL MISS HOMER 172-380 WERNER WAR PARTY 2417 B A LADY 6807 305 O C C TRANSFORMATION 680T P A R BLAZING BROADSIDE 78	CW +35 Marb +0.52 RE +0.18
--	--	---

CED	BW	WW	YW	SC	Milk	DOC	SW	SB
+2	+2.7	+66	+111	-0.11	+23	+9	+62	+113

BW: 73	Adj. WW: 870	WWR: 109	1-5 Star Rating • C/E: 3-5 Hfhrs/1-2 Cows
			C/E Flething Disposition
			3 4 4

- Very long bodied Range Master son that will make replacement kinds of females.
- Note his 109 weaning ratio.

Lot 41 **AMDAHL RANGE MASTER 1120**

BD: 1/24/21 Reg No: 20069965 Tattoo: 1120

HA COWBOY UP 5405 AMDAHL RANGE MASTER 830 AMDAHL MISS BP 380-509	HA OUTSIDE 3008 HA BLACKCAP LADY 1602 AMDAHL BLOCK PARTY 368 AMDAHL MISS HOMER 172-380 VIN-MAR O'REILLY FACTOR BUSHES BLACKBIRD GAL 6577 O C C HOMER 650H S T MISS FOCUS PRIDE 2A	CW +50 Marb +0.03 RE +0.45
--	--	---

CED	BW	WW	YW	SC	Milk	DOC	SW	SB
+8	+1.7	+68	+117	+0.78	+14	-2	+55	+118

BW: 80	Adj. WW: 846	WWR: 106	1-5 Star Rating • C/E: 3-5 Hfhrs/1-2 Cows
			C/E Flething Disposition
			3 5 3

- Recommended for larger framed heifers or cows.
- 1120 is deep and a long bodied Range Master son.
- His dam posts a nursing ratio of 105 on her 4 calves.



Weaning Weight Angus breed: 624 lbs | Ours 796 lbs
Average Birth Weight Angus breed: 80 lbs | Ours 76 lbs
Average Doc EPD for Angus breed: 16 | Ours 24
Average SC EPD for the Angus breed: 0.76 | Ours 1.18



Angus Bulls

Lots 42-44

- Full brothers out of 414 cow x Resilient Sire: 1150, 1152, 1159
- All three are recommended for heifers or cows.
- This is a great opportunity to be the first to acquire full brothers sired by the Sitz Resilient bull.

- They will add real world maternal traits along with style, longevity and soundness of foot.
- Their dam, Amdahl Blackbird 414 was selected by Ingalls Angus and was the top selling bred female in our 2020 sale.

Lot 42 **AMDAHL RESILIENT 1150**
 BD: 2/8/21 Reg No: 20069970 Tattoo: 1150

SITZ STELLAR 726D	MOHNEN SUBSTANTIAL 272	CW
SITZ RESILIENT 10208	SITZ PRIDE 200B	+31
SITZ MISS BURGESS 1856	SITZ TOP GAME 561X	Marb
SA 652 MISSING LINK 848 620	SITZ MISS BURGESS 4381	+0.45
AMDAHL'S BLACKBIRD 120-414	SA 830M MISSING LINK 652 325	RE
D R BLACKBIRD 120	S A 841 ANCHOR 620 075	+0.26
	H A R B WINDY 702 JH	
	D R BLACKBIRD 3779	

CED	BW	WW	YW	SC	Milk	DOC	\$W	\$B
+5	+1.0	+55	+88	+0.96	+40	+26	+83	+94

BW: 78 | Adj. WW: 786 | WWR: 100

1-5 Star Rating • C/E: 3-5 Hfhrs/1-2 Cows		
C/E	Fleshing	Disposition
3	4	5



AMDAHL'S BLACKBIRD 120-414
DAM OF LOTS 42-44



Lot 43 **AMDAHL RESILIENT 1152**
 BD: 2/8/21 Reg No: 20105881 Tattoo: 1152

CED	BW	WW	YW	SC	Milk	DOC	\$W	\$B
+8	-0.4	+40	+67	+0.56	+40	+16	+67	+94

CW	+15	Marb	+0.77	RE	+0.16
----	-----	------	-------	----	-------

BW: ET | Adj. WW: 786 | WWR: ET

1-5 Star Rating • C/E: 3-5 Hfhrs/1-2 Cows		
C/E	Fleshing	Disposition
3	4	5

Lot 44 **AMDAHL RESILIENT 1159**
 BD: 2/10/21 Reg No: 20105887 Tattoo: 1159

CED	BW	WW	YW	SC	Milk	DOC	\$W	\$B
+10	+0.2	+56	+95	+0.01	+25	+17	+63	+124

CW	+32	Marb	+0.83	RE	+0.37
----	-----	------	-------	----	-------

BW: ET | Adj. WW: 748 | WWR: ET

1-5 Star Rating • C/E: 3-5 Hfhrs/1-2 Cows		
C/E	Fleshing	Disposition
4	4	5

Lot 45 **AMDAHL ULTIMATE 0206**
 BD: 10/6/20 Reg No: 20069988 Tattoo: 0206

O C C LINEBRED 661L	O C C HOMER 650H	CW
AMDAHL'S ULTIMATE 802	O C C DIXIE ERICA 686J	+64
P A R ERIKA'S TRAVELER 52	P A R GLADIATOR 270	Marb
G A R PHOENIX	P A R TRAVELING ADD	+0.28
AMDAHL MISS QUEEN 937	G A R SURE FIRE	RE
D R QUEEN 127	G A R PROPHET N744	+0.42
	S A V FINAL ANSWER 0035	
	D R QUEEN 7036	

CED	BW	WW	YW	SC	Milk	DOC	\$W	\$B
+14	+0.9	+71	+117	+1.74	+23	+4	+77	+144

BW: 73 | Adj. WW: 780 | WWR: 100

1-5 Star Rating • C/E: 3-5 Hfhrs/1-2 Cows		
C/E	Fleshing	Disposition
5	3	3

- Fall bull
- Recommended for heifers or cows.
- Use to incorporate maternal and carcass traits.
- His dam is a 2 year old Phoenix daughter with a beautiful udder.



THIS AMDAHL ANGUS BULL PASSES HIS BREEDING EVALUATION AND IS HEADING INTO HIS 8TH BREEDING SEASON

Angus Bulls

Lot 46

AMDAHL ULTIMATE 1023

BD: 1/4/21 Reg No: 20069960 Tattoo: 1023

O C C LINEBRED 661L AMDAHL'S ULTIMATE 802 P A R ERIKA'S TRAVELER 52 CONNEALY ARMORY AMDAHL MISS MAY 905 AMDAHL MISS LAUREL 056-6108	O C C HOMER 650H O C C DIXIE ERICA 686J P A R GLADIATOR 270 P A R TRAVELING ADO CONNEALY ARSENAL 2174 EBBA OF CONANGA 808 HERBSTER LAUREL 466 AMDAHL MISS TJ HOMER3138 056	CW +29 Marb -0.22 RE +0.27
--	---	---

CED	BW	WW	YW	SC	Milk	DOC	\$W	\$B
+14	-1.3	+51	+93	+0.27	+31	+10	+64	+71
BW: 65					Adj. WW: 803		WWR: 101	
1-5 Star Rating • C/E: 3-5 Hfhrs/1-2 Cows								
C/E			Fleshing			Disposition		
5			5			5		

- Recommended for heifers or cows.
- 1023 is one of the biggest spread bulls in the sale.
- His dam is a beautiful, deep bodied Armory daughter that sports a great udder.



LOT 46

Lot 47

AMDAHL ROCKETEER 1014

BD: 1/1/21 Reg No: 20069958 Tattoo: 1014

MUSGRAVE AVIATOR AMDAHL'S ROCKETEER 636 AMDAHL ERICA 431-465 AMDAHL'S BLOCK PARTY 3113 AMDAHL MISS BLKPARTY3130-518 AMDAHL MISS LEGEND165-3130	KOUPALS B&B IDENTITY MCATL FOREVER LADY 1429-138 G A R PROPHET S A 1117 HOMER 431 228 CB BLOCK PARTY 156 AMDAHL NIGHTWATCH 821 026 AMDAHL'S LEGEND 804 AMDAHL MISS SML 431-165	CW +31 Marb +0.52 RE +0.55
---	---	---

CED	BW	WW	YW	SC	Milk	DOC	\$W	\$B
+12	-1.1	+43	+78	+1.12	+38	-1	+65	+116
BW: 79					Adj. WW: 752		WWR: 94	
1-5 Star Rating • C/E: 3-5 Hfhrs/1-2 Cows								
C/E			Fleshing			Disposition		
4			4			4		

- Recommended for heifers or cows.
- 1014 is backed by the finest cows in the Amdahl program. Keep all the daughters out of this bull.
- His dam records a nursing ratio of 102 on her 4 calves.



LOT 47

Lot 48

AMDAHL SOUTHERN CHARM 1048

BD: 1/9/21 Reg No: 20106004 Tattoo: 1048

SILVEIRAS CONVERSION 8064 BUBS SOUTHERN CHARM AA31 HICKORY HILL ERICA 009 BVC AVIATOR 4003 AMDAHL ERICA 337-8153 AMDAHL'S ERICA 147DK-337	BT CROSSOVER 758N EXG SARAS DREAM S609 R3 CONNEALY STIMULUS 8419 HICKORY HILL ERICA TA32 MUSGRAVE AVIATOR BVC LUCY TH 263 W H S LIMELIGHT 64V D R ERICA 147	CW +46 Marb +0.93 RE +0.88
--	--	---

CED	BW	WW	YW	SC	Milk	DOC	\$W	\$B
+15	-1.0	+68	+114	+0.90	+31	+18	+84	+154
BW: 61					Adj. WW: 773		WWR: 97	
1-5 Star Rating • C/E: 3-5 Hfhrs/1-2 Cows								
C/E			Fleshing			Disposition		
5			5			4		

- Highly recommended for heifers.
- This Southern Charm son will add calving ease and carcass traits.



Lot 49

AMDAHL ASHLAND 1102

BD: 1/18/21 Reg No: 20105826 Tattoo: 1102

G A R EARLY BIRD G A R ASHLAND CHAIR ROCK AMBUSH 1018 CONNEALY CAPITALIST 028 AMDAHL MISS CAPITAL 7197-640 KSU MISS NEWSLINE 7197	G A R DAYLIGHT G A R PROGRESS 830 B/R AMBUSH 28 G A R YIELD GRADE N366 S A V FINAL ANSWER 0035 PRIDES PITA OF CONANGA 8821 LEMMON NEWSLINE C804 K S U MISS 602C 3198	CW +38 Marb +1.14 RE +0.64
--	---	---

CED	BW	WW	YW	SC	Milk	DOC	\$W	\$B
+14	-0.7	+64	+107	+0.34	+25	+20	+75	+149
BW: 73					Adj. WW: 772		WWR: 97	
1-5 Star Rating • C/E: 3-5 Hfhrs/1-2 Cows								
C/E			Fleshing			Disposition		
5			4			4		

- Highly recommended for heifers.
- 1102 is a strong topped and sharp looking Ashland son that sports tremendous calving ease and marbling.



Angus Bulls

Lot 50 **AMDAHL ASHLAND 1113**
 BD: 1/22/21 Reg No: 20105834 Tattoo: 1113

G A R EARLY BIRD	G A R DAYLIGHT		CW
G A R ASHLAND	G A R PROGRESS 830		+23
CHAIR ROCK AMBUSH 1018	B/R AMBUSH 28		Marb
O C C PROPHET 666P	G A R YIELD GRADE N366		+0.57
O C C DIXIE ERICA 744W	O C C EMBLAZON 854E		RE
V-BAR DIXIE ERICA 7152	O C C JUANADA 858F		+0.81
	V BAR ANCHOR 481		
	V BAR DIXIE ERICA 7155		

CED	BW	WW	YW	SC	Milk	DOC	\$W	\$B
+14	-0.9	+53	+91	+0.02	+21	+15	+58	+110

BW: 69	Adj. WW: 804	WWR: 101	1-5 Star Rating • C/E: 3-5 Hftrs/1-2 Cows
C/E		Fleshing	Disposition
5		5	4

- Highly recommended for heifers.
- This Ashland son is moderate and thick and is backed by a proven 13 year old dam.



MATERNAL BROTHER OF LOT 51



Lot 51 **AMDAHL ASHLAND 1124**
 BD: 1/26/21 Reg No: 20105833 Tattoo: 1124

G A R EARLY BIRD	G A R DAYLIGHT		CW
G A R ASHLAND	G A R PROGRESS 830		+32
CHAIR ROCK AMBUSH 1018	B/R AMBUSH 28		Marb
H A R B WINDY 702 JH	G A R YIELD GRADE N366		+0.83
D R BLACKBIRD 120	A A R REALLY WINDY 1205		RE
D R BLACKBIRD 3779	H A R B BLACK LADY 073 J H		+0.55
	TRASK TRAVELER 623		
	D R BLACKBIRD 746		

CED	BW	WW	YW	SC	Milk	DOC	\$W	\$B
+12	+1.0	+60	+97	+0.31	+25	+29	+67	+127

BW: 75	Adj. WW: 797	WWR: 100	1-5 Star Rating • C/E: 3-5 Hftrs/1-2 Cows
C/E		Fleshing	Disposition
5		5	5

- Recommended for heifers or cows.
- He is sharp looking with added rib shape and capacity.
- His donor dam posts a nursing ratio of 102 on her 7 natural calves.



Lot 52 **AMDAHL RESILIENT 1121**
 BD: 1/25/21 Reg No: 20105859 Tattoo: 1121

SITZ STELLAR 726D	MOHNEN SUBSTANTIAL 272		CW
SITZ RESILIENT 10208	SITZ PRIDE 200B		+71
SITZ MISS BURGESS 1856	SITZ TOP GAME 561X		Marb
G A R PHOENIX	SITZ MISS BURGESS 4381		+0.51
AMDAHL MISS QUEEN 951	G A R SURE FIRE		RE
AMDAHL QUEEN 127- 708	G A R PROPHET N744		+1.14
	HERBSTER LAUREL 466		
	D R QUEEN 127		

CED	BW	WW	YW	SC	Milk	DOC	\$W	\$B
+3	+1.7	+82	+141	+0.34	+25	+17	+85	+160

BW: 73	Adj. WW: 817	WWR: 102	1-5 Star Rating • C/E: 3-5 Hftrs/1-2 Cows
C/E		Fleshing	Disposition
3		3	3

- Recommended for heifers or cows.
- He is used to add maternal cow power with an outcrossed pedigree.



**THANKFUL FOR A WIFE WHO WILL SORT CATTLE
AND WORK SO HARD WITH ME.**

Angus Bulls



JAUER 173 ANCHOR 109 7401
DAM OF LOT 53

Lot 53 AMDAHL RANGE MASTER 1123

BD: 1/26/21 Reg No: 20069966 Tattoo: 1123

HA COWBOY UP 5405	HA OUTSIDE 3008	CW
AMDAHL RANGE MASTER 830	HA BLACKCAP LADY 1602	+37
AMDAHL MISS BP 380-509	AMDAHL BLOCK PARTY 368	Marb
JAUER 8214 ANCHOR 889 173	AMDAHL MISS HOMER 172-380	+0.49
JAUER 173 ANCHOR 109 7401	JAUER 646 ANCHOR 8214 544	RE
JAUER HOMER 550 109	JAUER EXODUS 889 849 C	+0.38
	O C C HOMER 650H	
	JAUER TRAVELEDGE 550 327	

CED	BW	WW	YW	SC	Milk	DOC	SW	SB
+4	+4.2	+51	+100	+0.69	+12	-11	+23	+135

BW: 92	Adj. WW: 769	WWR: 96	
1-5 Star Rating • C/E: 3-5 Hfhrs/1-2 Cows			
C/E	Fleshing	Disposition	
1	4	4	

- Moderate and deep ribbed Range Master son.
- He is backed by a proven 14 year old donor dam.



TIM, T.J., AND J.D. ENJOYING ONLY THE BEST BEEF

Lot 54 AMDAHL FLAGSTONE 1012

BD: 12/30/20 Reg No: 20103264 Tattoo: 1012

HOOVER NO DOUBT	MOGCK BULLSEYE	CW
BALDRIDGE FLAGSTONE F411	MISS BLACKCAP ELLSTON J2	+52
BALDRIDGE ISABEL Y69	STYLES UPGRADE J59	Marb
O C C X-TRA EASY 708X	BALDRIDGE ISABEL T935	+0.83
AMDAHL MISS XTRA LADY562-718	O C C NO PROBLEMS 52N	RE
AMDAHL MISS KODIAK5078-562	O C C DIXIE ERICA 678T	+0.54
	BUSHS KODIAK LEAD 754	
	S K MISS FAME LADY 25	

CED	BW	WW	YW	SC	Milk	DOC	SW	SB
-2	+3.3	+63	+111	+0.38	+24	+13	+59	+159

BW: 82	Adj. WW: 781	WWR: 98	
1-5 Star Rating • C/E: 3-5 Hfhrs/1-2 Cows			
C/E	Fleshing	Disposition	
2	3	4	

- 1012 is a great female producing Flagstone son.



Lot 55 AMDAHL LOGO 1047

BD: 1/9/21 Reg No: 20106972 Tattoo: 1047

SITZ LOGO 12964	SITZ TEBOW 11860	CW
SITZ LOGO 7807	SITZ SHAUNA 3152	+20
SITZ BEEBE QUEEN 3833	SITZ UPWARD 307R	Marb
BVC AVIATOR 4007	SITZ BEEBE QUEEN 699	+0.02
AMDAHL DIXIE ERICA 9170	MUSGRAVE AVIATOR	RE
AMDAHL REMARKABULL 5134	BVC ROGUE PRIDE CC7 228	+0.37
	O C C REMARKABULL 937R	
	PAR MITCHELL'S LINK 303	

CED	BW	WW	YW	SC	Milk	DOC	SW	SB
+8	+0.1	+55	+88	-0.03	+29	+14	+73	+71

BW: 73	Adj. WW: 786	WWR: 98	
1-5 Star Rating • C/E: 3-5 Hfhrs/1-2 Cows			
C/E	Fleshing	Disposition	
4	5	3	

- Highly recommended for heifers.
- 1047 is a moderate and wide topped Logo son.
- His dam is a great uddered, perfect footed and young female.



Angus Bulls

Lot 56

AMDAHL LOGO 1039

BD: 1/7/21 Reg No: 20106971 Tattoo: 1039

SITZ LOGO 12964 SITZ LOGO 7807 SITZ BEEBE QUEEN 3833 G A R PHOENIX AMDAHL DIXIE ERICA 932 AMDAHL DIXIE ERICA 711P 069	SITZ TEBOW 11860 SITZ SHAUNA 3152 SITZ UPWARD 307R SITZ BEEBE QUEEN 699 G A R SURE FIRE G A R PROPHET N744 P A R HOMER 62 O C C DIXIE ERICA 711P	CW +41 Marb +0.35 RE +0.64
--	---	---

CED	BW	WW	YW	SC	Milk	DOC	\$W	\$B
+9	-0.1	+66	+116	+1.35	+27	+22	+74	+113

BW: 64	Adj. WW: 799	WWR: 100	1-5 Star Rating • C/E: 3-5 Hftrs/1-2 Cows
C/E	Fleshing	Disposition	
5	3	3	

- Highly recommended for heifers.
- 1039 is a strong and maternal Logo son.



AMDAHL RANGE MASTER 830
SIRE OF LOTS 57 & 58

Lot 57

AMDAHL RANGE MASTER 1077

BD: 1/14/21 Reg No: 20148553 Tattoo: 1077

HA COWBOY UP 5405 AMDAHL RANGE MASTER 830 AMDAHL MISS BP 380-509 S T MR FOCUS A AMDAHL MISS FOCUS 4467-549 S K MISS TIME LADY 16A	HA OUTSIDE 3008 HA BLACKCAP LADY 1602 AMDAHL BLOCK PARTY 368 AMDAHL MISS HOMER 172-380 TOKACH IN FOCUS 8241 R K MISS TRAVELER BLKBD 51 R K MR HI FLYER 8A S K MISS DIVIDEND LADY 17	CW +39 Marb +0.61 RE +0.45
--	--	---

CED	BW	WW	YW	SC	Milk	DOC	\$W	\$B
+8	+1.5	+48	+87	+1.30	+25	+18	+49	+134

BW: 70	Adj. WW: 839	WWR: 105	1-5 Star Rating • C/E: 3-5 Hftrs/1-2 Cows
C/E	Fleshing	Disposition	
2	4	4	

- 1077 and 1078 twins
- This set of twins are wide made with excellent performance. They will follow in their sire's footsteps well and make excellent herd bulls.
- Their dam posts a nursing ratio of 104 on her 4 calves.

Lot 58

AMDAHL RANGE MASTER 1078

BD: 1/14/21 Reg No: 20148554 Tattoo: 1078

HA COWBOY UP 5405 AMDAHL RANGE MASTER 830 AMDAHL MISS BP 380-509 S T MR FOCUS A AMDAHL MISS FOCUS 4467-549 S K MISS TIME LADY 16A	HA OUTSIDE 3008 HA BLACKCAP LADY 1602 AMDAHL BLOCK PARTY 368 AMDAHL MISS HOMER 172-380 TOKACH IN FOCUS 8241 R K MISS TRAVELER BLKBD 51 R K MR HI FLYER 8A S K MISS DIVIDEND LADY 17	CW +44 Marb +0.32 RE +0.52
--	--	---

CED	BW	WW	YW	SC	Milk	DOC	\$W	\$B
+8	+1.3	+58	+107	+0.97	+32	+13	+69	+122

BW: 72	Adj. WW: 813	WWR: 102	1-5 Star Rating • C/E: 3-5 Hftrs/1-2 Cows
C/E	Fleshing	Disposition	
2	4	4	



Lot 59

AMDAHL ULTIMATE 1066

BD: 1/12/21 Reg No: 20069963 Tattoo: 1066

O C C LINEBRED 661L AMDAHL'S ULTIMATE 802 P A R ERIKA'S TRAVELER 52 3F EPIC 4631 AMDAHL ERICA 544-9158 AMDAHL ERICA HICKOK 104-544	O C C HOMER 650H O C C DIXIE ERICA 686J P A R GLADIATOR 270 P A R TRAVELING ADD VARILEK PRODUCT 2010 04 ZEBU QUEEN 1072 MILL BAR HICKOK 7242 D R ERICA 104	CW +43 Marb +0.27 RE -0.09
---	---	---

CED	BW	WW	YW	SC	Milk	DOC	\$W	\$B
+9	+0.2	+60	+102	+1.20	+23	+9	+66	+112

BW: 74	Adj. WW: 764	WWR: 96	1-5 Star Rating • C/E: 3-5 Hftrs/1-2 Cows
C/E	Fleshing	Disposition	
5	4	5	

- Highly recommended for heifers.
- This Ultimate son offers a great balance of calving ease and performance.

Angus Bulls

Lot 60

AMDAHL RESILIENT 1096

BD: 1/17/21 Reg No: 20105895 Tattoo: 1096

SITZ STELLAR 726D SITZ RESILIENT 10208 SITZ MISS BURGESS 1856 P A R HOMER 62 AMDAHL MISS HOMER62 2170-154 K S U MISS ALLIANCE 2170	MOHNEN SUBSTANTIAL 272 SITZ PRIDE 200B SITZ TOP GAME 561X SITZ MISS BURGESS 4381 O C C HOMER 650H P A R AMBUSH LASSIE 1DA SITZ ALLIANCE 6595 MISS LUCYS BOY K 8188
---	---

CW
+20
Marb
+0.49
RE
+0.45

CED	BW	WW	YW	SC	Milk	DOC	\$W	\$B
+9	+0.0	+48	+85	+0.30	+24	+2	+56	+101

BW: 82	Adj. WW: 813	WWR: 102	1-5 Star Rating • C/E: 3-5 Hfhrs/1-2 Cows
			C/E Flething Disposition
			3 3 3

- Recommended for heifers or cows.
- A smooth made and large framed Resilient son that should cover lots of country.
- He will make great daughters.
- His dam posts a weaning ratio of 102 on her 7 calves.



MATERNAL SISTER OF LOT 61

Lot 61

AMDAHL RANGE MASTER 1136

BD: 1/31/21 Reg No: 20069968 Tattoo: 1136

HA COWBOY UP 5405 AMDAHL RANGE MASTER 830 AMDAHL MISS BP 380-509 S A V FINAL ANSWER 0035 D R LADY BEULAH 128 D R LADY BEULAH 7127	HA OUTSIDE 3008 HA BLACKCAP LADY 1602 AMDAHL BLOCK PARTY 368 AMDAHL MISS HOMER 172-380 SITZ TRAVELER 8180 S A V EMULOUS 8145 D R EMULATION 4730 D R LADY BEULAH 2728
--	---

CW
+37
Marb
+0.51
RE
+0.52

CED	BW	WW	YW	SC	Milk	DOC	\$W	\$B
+10	+1.3	+59	+109	+1.12	+18	+5	+49	+128

BW: 81	Adj. WW: 830	WWR: 104	1-5 Star Rating • C/E: 3-5 Hfhrs/1-2 Cows
			C/E Flething Disposition
			3 4 4

- Recommended for heifers or cows.
- Deep chested and wide bodied.
- 1136 is backed by a Pathfinder donor female that posts a nursing ratio of 110 on her 7 calves.



D R LADY BEULAH 128
DAM OF LOT 61

Lot 62

AMDAHL PRIME BEEF 1132

BD: 1/30/21 Reg No: 20074021 Tattoo: 1132

HA PRIME CUT 4493 AMDAHL PRIME BEEF 9100 AMDAHL NIGHTWATCH 821 026 CONNEALY ARMORY AMDAHL ERICA 907 AMDAHL MISS HVY DUTY 103-517	VERMILION SIRLOIN HA MISS BLACKCAP 9127 O C C AMDAHL EMBLAZON 709U AMDAHL JD NIGHTWATCH 679-821 CONNEALY ARSENAL 2174 EBBA OF CONANGA 808 AMDAHL'S HEAVY DUTY 323 AMDAHL MISS ULTIMATE747W-103
---	---

CW
+43
Marb
+0.14
RE
+0.40

CED	BW	WW	YW	SC	Milk	DOC	\$W	\$B
+14	-0.3	+62	+118	+0.71	+16	+20	+51	+125

BW: 68	Adj. WW: 799	WWR: 100	1-5 Star Rating • C/E: 3-5 Hfhrs/1-2 Cows
			C/E Flething Disposition
			5 4 5

- Highly recommended for heifers.
- He will produce calves that come easy and grow with vigor.

Lot 63

AMDAHL ASHLAND 1149

BD: 2/8/21 Reg No: 20105821 Tattoo: 1149

G A R EARLY BIRD G A R ASHLAND CHAIR ROCK AMBUSH 1018 CONNEALY BLACK GRANITE AMDAHL MISS BG 459-8129 AMDAHL MISS LINK 515-459	G A R DAYLIGHT G A R PROGRESS 830 B/R AMBUSH 28 G A R YIELD GRADE N366 CONNEALY CONSENSUS 7229 EURA ELGA OF CONANGA 9109 SA 652 MISSING LINK 848 620 ST MISS HOT FLASH BLACKBIRD
--	---

CW
+36
Marb
+0.39
RE
+1.06

CED	BW	WW	YW	SC	Milk	DOC	\$W	\$B
+14	-0.3	+68	+116	+1.09	+23	+30	+74	+123

BW: 77	Adj. WW: 776	WWR: 97	1-5 Star Rating • C/E: 3-5 Hfhrs/1-2 Cows
			C/E Flething Disposition
			5 4 4

- Highly recommended for heifers.
- 1149 is a bull that doesn't miss in any category.
- He is moderate and long bodied.

Angus Bulls

Lot 64 **AMDAHL RANGE MASTER 1165**

BD: 2/15/21 Reg No: 20069971 Tattoo: 1165

HA COWBOY UP 5405	HA OUTSIDE 3008	CW
AMDAHL RANGE MASTER 830	HA BLACKCAP LADY 1602	+43
AMDAHL MISS BP 380-509	AMDAHL BLOCK PARTY 368	Marb
HERBSTER LAUREL 466	AMDAHL MISS HOMER 172-380	+0.62
AMDAHL QUEEN 404-8139	S A V MERIT 0616	RE
AMDAHL QUEEN 709-404	LIMESTONE MAY 8195	+0.40
	G A R PROPHET	
	AMDAHL HOMER QUEEN 531-709	

CED	BW	WW	YW	SC	Milk	DOC	\$W	\$B
+7	+2.7	+65	+108	+0.95	+26	+3	+66	+128

BW: 82	Adj. WW: 837	WWR: 105	1-5 Star Rating • C/E: 3-5 Hftrs/1-2 Cows
			C/E Flething Disposition
			3 4 4

- 1165 is a stylish and long bodied bull that is backed by a beautiful 3 year old dam.
- His dam posts a nursing ratio of 2 at 104.
- His grandam, Amdahl Queen 404, served in the donor program and is a sale feature.



AMDAHL QUEEN 709-404
MATERNAL GRANDAM OF LOT 64

Lot 65 **AMDAHL RANGE MASTER 1169**

BD: 2/16/21 Reg No: 20069972 Tattoo: 1169

HA COWBOY UP 5405	HA OUTSIDE 3008	CW
AMDAHL RANGE MASTER 830	HA BLACKCAP LADY 1602	+47
AMDAHL MISS BP 380-509	AMDAHL BLOCK PARTY 368	Marb
CONNEALY BLACK GRANITE	AMDAHL MISS HOMER 172-380	+0.40
AMDAHL'S MISS BLAZE 041-733	CONNEALY CONSENSUS 7229	RE
AMDAHL'S MISS BLAZE 272 041	EURA ELGA OF CONANGA 9109	+0.35
	O C C LINEBRED 661L	
	P A R HEAVY BLAZE 272	

CED	BW	WW	YW	SC	Milk	DOC	\$W	\$B
+9	+1.7	+79	+140	+0.97	+18	+25	+73	+129

BW: 82	Adj. WW: 805	WWR: 101	1-5 Star Rating • C/E: 3-5 Hftrs/1-2 Cows
			C/E Flething Disposition
			3 4 4

- Recommended for larger framed heifers or cows.
- This maternal and calving ease deluxe bull checks all the boxes.
- He is stacked with Pathfinder dams.
- His dam is selling as a sale feature.



AMDAHL'S MISS BLAZE 041-733
DAM OF LOT 65

Lot 66 **AMDAHL PRIME BEEF 1110**

BD: 1/21/21 Reg No: 20107714 Tattoo: 1110

HA PRIME CUT 4493	VERMILION SIRLOIN	CW
AMDAHL PRIME BEEF 9100	HA MISS BLACKCAP 9127	+47
AMDAHL NIGHTWATCH 821 026	O C C AMDAHL EMBLAZON 709U	Marb
MUSGRAVE BIG SKY	AMDAHL JD NIGHTWATCH 679-821	+0.21
AMDAHL BLACKBIRD 148-747	CONNEALY EARNAN 076E	RE
D R BLACKBIRD 148	SAV PRIMROSE 7861	+0.33
	H A R B WINDY 702 JH	
	D R BLACKBIRD 5043	

CED	BW	WW	YW	SC	Milk	DOC	\$W	\$B
+4	+4.2	+55	+104	+1.36	+29	+20	+51	+123

BW: 72	Adj. WW: 773	WWR: 100	1-5 Star Rating • C/E: 3-5 Hftrs/1-2 Cows
			C/E Flething Disposition
			2 4 4

- 1110 is a deep bodied and moderate framed Prime Beef son.
- He is backed by generations of Pathfinder cows.

Lot 67 **AMDAHL GALAXY 1131**

BD: 1/30/21 Reg No: 20074241 Tattoo: 1131

MUSGRAVE AVIATOR	KOUPALS B&B IDENTITY	CW
AMDAHL GALAXY 922	MCATL FOREVER LADY 1429-138	+37
AMDAHL MISS LAUREL 616-6157	HERBSTER LAUREL 466	Marb
GAFFNEY GAME ON 3122	AMDAHL'S MISS EMBLAZON 616	+0.66
AMDAHL TJ ERICA GO 3149-692	CONNEALY CONFIDENCE 0100	RE
AMDAHL TJ ERICA 604-3149	R B LADY STANDARD 305-890	+0.25
	AMDAHL'S MVP 040	
	AMDAHL ERICA 1019 JUPITER604	

CED	BW	WW	YW	SC	Milk	DOC	\$W	\$B
+10	+1.4	+52	+95	-0.11	+27	+3	+58	+126

BW: 74	Adj. WW: 745	WWR: 93	1-5 Star Rating • C/E: 3-5 Hftrs/1-2 Cows
			C/E Flething Disposition
			5 4 4

- Recommended for heifers or cows.
- Easy doing heifer bull.

Angus Bulls



FULL BROTHER OF LOT 68

Lot 68 AMDAHL RANGE MASTER 1151

BD: 2/8/21 Reg No: 20107715 Tattoo: 1151

HA COWBOY UP 5405	HA OUTSIDE 3008	CW
AMDAHL RANGE MASTER 830	HA BLACKCAP LADY 1602	+63
AMDAHL MISS BP 380-509	AMDAHL BLOCK PARTY 368	Marb
	AMDAHL MISS HOMER 172-380	+0.61
	G A R PROPHET	RE
	AMDAHL BLACKBIRD 148-460	+0.30
	D R BLACKBIRD 148	

CED	BW	WW	YW	SC	Milk	DOC	SW	SB
+7	+2.6	+81	+150	+0.09	+28	+19	+82	+149

BW: 87 Adj. WW: 819 WWR: 100			1-5 Star Rating • C/E: 3-5 Hfhrs/1-2 Cows		
C/E	Fleshing	Disposition			
2	5	5			

- This powerful Range Master son is deep ribbed and travels with ease.
- His full brother was the second highest selling bull in our 2020 sale.
- His Pathfinder dam has an impressive nursing ratio of 108 on her 5 calves.

Lot 69 AMDAHL RANGE MASTER 1003

BD: 12/27/20 Reg No: 20069956 Tattoo: 1003

HA COWBOY UP 5405	HA OUTSIDE 3008	CW
AMDAHL RANGE MASTER 830	HA BLACKCAP LADY 1602	+32
AMDAHL MISS BP 380-509	AMDAHL BLOCK PARTY 368	Marb
	AMDAHL MISS HOMER 172-380	+0.53
	S A 950G GLORY 322 306	RE
	S A 322 GLORY 681 339	+0.15
	S A 880H HELMSMAN 339 872	

CED	BW	WW	YW	SC	Milk	DOC	SW	SB
+4	+2.0	+50	+91	+0.71	+24	+14	+47	+118

BW: 81 Adj. WW: 727 WWR: 91			1-5 Star Rating • C/E: 3-5 Hfhrs/1-2 Cows		
C/E	Fleshing	Disposition			
3	4	4			

- 1003 is used to add maternal power and longevity.
- His 15 year old dam has stood the test of time and continues to calve the same time every year.



S A 322 GLORY 681 339
DAM OF LOT 69

Lot 70 AMDAHL ROCKETEER 1015

BD: 1/1/21 Reg No: 20069959 Tattoo: 1015

MUSGRAVE AVIATOR	KOUPLAS B&B IDENTITY	CW
AMDAHL'S ROCKETEER 636	MCATL FOREVER LADY 1429-138	+12
AMDAHL ERICA 431-465	G A R PROPHET	Marb
	S A 1117 HOMER 431 228	+0.47
	P A R DAKOTA BROADSIDE 230	RE
	PAR BROADSIDE QUEEN 363	+0.54
	P A R MITCHELL'S QUEEN 108	

CED	BW	WW	YW	SC	Milk	DOC	SW	SB
+5	+1.1	+39	+62	+0.38	+22	+4	+44	+90

BW: 87 Adj. WW: 762 WWR: 95			1-5 Star Rating • C/E: 3-5 Hfhrs/1-2 Cows		
C/E	Fleshing	Disposition			
2	5	4			

- This 1015 bull is a very stout and wide topped Rocketeer son.

Delaney Cattle Services

Semen Sales // Sale Prep.
A.I. // Freeze Brand

Call me today!

Josh Delaney & John Delaney
90120 Elk Rd. Valentine, NE 69201
308.360.1974
delaneycattle@icloud.com

Angus Bulls



Lot 71 AMDAHL ROCKETEER 1021

MUSGRAVE AVIATOR AMDAHL'S ROCKETEER 636 AMDAHL ERICA 431-465 HERD BOOK BLACKTOP CONSENSUS 205 AMDAHL MISS CONSENSUS351-597 AMDAHL'S EDWINA 351	KROUPALS B&B IDENTITY MCATL FOREVER LADY 1429-138 G A R PROPHET S A 1117 HOMER 431 228 CONNEALY CONSENSUS 7229 BLACKTOP NICKY 05 MYTTY IN FOCUS D R EDWINA 137
--	---

CED	BW	WW	YW	SC	Milk	DOC	\$W	\$B
+10	+0.6	+50	+92	+1.00	+40	+14	+69	+123
BW: 82 Adj. WW: 743 WWR: 93						1-5 Star Rating • C/E: 3-5 Hfhrs/1-2 Cows		
C/E		Fleshing		Disposition				
3		4		5				

- Recommended for large framed heifers or cows.
- 1021 is a larger framed Rocketeer son with great length.



D R QUEEN 127
GRANDAM OF LOT 72

Lot 72 AMDAHL RESILIENT 1034

SITZ STELLAR 726D SITZ RESILIENT 10208 SITZ MISS BURGESS 1856 HERD BOOK HERBSTER LAUREL 466 AMDAHL QUEEN 127- 708 D R QUEEN 127	MOHNEN SUBSTANTIAL 272 SITZ PRIDE 200B SITZ TOP GAME 561X SITZ MISS BURGESS 4381 S A V MERIT 0616 LIMESTONE MAY 8195 S A V FINAL ANSWER 0035 D R QUEEN 7036
---	--

CED	BW	WW	YW	SC	Milk	DOC	\$W	\$B
+16	-2.6	+54	+94	+1.29	+35	+13	+74	+104
BW: 63 Adj. WW: 691 WWR: 86						1-5 Star Rating • C/E: 3-5 Hfhrs/1-2 Cows		
C/E		Fleshing		Disposition				
5		3		3				

- Highly recommended for heifers.
- 1034 is a super maternal Resilient son.

Lot 73 AMDAHL GALAXY 1042

MUSGRAVE AVIATOR AMDAHL GALAXY 922 AMDAHL MISS LAUREL 616-6157 HERD BOOK MILL BAR HICKOK 7242 AMDAHL MISS HICKOK 031-560 AMDAHL MISS 778 031	KROUPALS B&B IDENTITY MCATL FOREVER LADY 1429-138 HERBSTER LAUREL 466 AMDAHL'S MISS EMBLAZON 616 CONNEALY CONSENSUS 7229 MILL BAR BEMINDFUL MAID 6304 O C C PROTOTYPE 847P S A 48 HUNTER 778 506
--	---

CED	BW	WW	YW	SC	Milk	DOC	\$W	\$B
+14	-2.0	+59	+108	+0.51	+30	+22	+72	+139
BW: 66 Adj. WW: 726 WWR: 91						1-5 Star Rating • C/E: 3-5 Hfhrs/1-2 Cows		
C/E		Fleshing		Disposition				
5		3		4				

- Highly recommended for heifers.
- His dam is a beautiful 6 year old cow that has a great udder.

Lot 74 AMDAHL FLAGSTONE 1044

HOOVER NO DOUBT BALDRIDGE FLAGSTONE F411 BALDRIDGE ISABEL Y69 HERD BOOK BVC AVIATOR 4007 AMDAHL MISS PRIDE 5159-881 AMDAHL MISS PRIDE 5043-5159	MOGCK BULLSEYE MISS BLACKCAP ELLSTON J2 STYLES UPGRADE J59 BALDRIDGE ISABEL T935 MUSGRAVE AVIATOR BVC ROGUE PRIDE CC7 228 BUSHS CONTAGIOUS 669 R K MISS DESIGN PRIDE 7
---	---

CED	BW	WW	YW	SC	Milk	DOC	\$W	\$B
+4	+2.1	+60	+103	+0.95	+19	+30	+55	+145
BW: 78 Adj. WW: 724 WWR: 91						1-5 Star Rating • C/E: 3-5 Hfhrs/1-2 Cows		
C/E		Fleshing		Disposition				
3		4		4				

- This Flagstone son should add thickness and udder quality.



Angus Bulls

Lot 75 **AMDAHL ROCKETEER 1050**

BD: 1/9/21 Reg No: 20069962 Tattoo: 1050

MUSGRAVE AVIATOR AMDAHL'S ROCKETEER 636 AMDAHL ERICA 431-465	KOUPALS B&B IDENTITY MCATL FOREVER LADY 1429-138 G A R PROPHET S A 1117 HOMER 431 228 O C C LINEBRED 661L P A R HEAVY QUEEN RITO 531 P A R HOMER 62 K S U MISS ALLIANCE 2138	CW +18 Marb +0.43 RE +0.48
--	---	---

CED	BW	WW	YW	SC	Milk	DOC	\$W	\$B
+10	+0.2	+41	+78	+0.47	+26	+15	+44	+98

BW: 82	Adj. WW: 740	WWR: 93	1-5 Star Rating • C/E: 3-5 Hftrs/1-2 Cows
C/E	Fleshing	Disposition	
3	3	3	

- Recommended for heifers or cows.
- He is a large framed Rocketeer son that offers calving ease and strong maternal traits.
- His dam is a deep bodied and nice uddered female that posts a nursing ratio of 101 on her 5 calves.

Lot 76 **AMDAHL AMERICAN PRIDE 1069**

BD: 1/12/21 Reg No: 20074194 Tattoo: 1069

LD CAPITALIST 316 AMDAHL AMERICAN PRIDE 973 D R DORINDA 141	CONNEALY CAPITALIST 028 LD DIXIE ERICA 2053 S A V BISMARCK 5682 D R DORINDA 7075 MUSGRAVE AVIATOR AMDAHL ERICA 431-465 MILL BAR HICKOK 7242 AMDAHL MISS 778 031	CW +50 Marb +0.66 RE +0.82
---	--	---

CED	BW	WW	YW	SC	Milk	DOC	\$W	\$B
+9	+0.8	+66	+121	+0.26	+13	+19	+53	+153

BW: 69	Adj. WW: 780	WWR: 98	1-5 Star Rating • C/E: 3-5 Hftrs/1-2 Cows
C/E	Fleshing	Disposition	
5	4	3	

- Highly recommended for heifers.
- This American pride son has exceptional birth to weaning performance.



Lot 77 **AMDAHL AMERICAN PRIDE 1071**

BD: 1/13/21 Reg No: 20074195 Tattoo: 1071

LD CAPITALIST 316 AMDAHL AMERICAN PRIDE 973 D R DORINDA 141	CONNEALY CAPITALIST 028 LD DIXIE ERICA 2053 S A V BISMARCK 5682 D R DORINDA 7075 AMDAHL'S BLOCK PARTY 557 AMDAHL MISS ULTIMATE747W-103 VIN-MAR CONSENSUS 2616 S T MISS FOCUS ERICA 17 A	CW +39 Marb +0.27 RE +0.49
---	--	---

CED	BW	WW	YW	SC	Milk	DOC	\$W	\$B
+10	-0.3	+64	+114	+1.19	+20	+8	+64	+118

BW: 70	Adj. WW: 766	WWR: 96	1-5 Star Rating • C/E: 3-5 Hftrs/1-2 Cows
C/E	Fleshing	Disposition	
5	4	4	

- Highly recommended for heifers.
- 1071 is a big spread bull that is correct and thick.

Lot 78 **AMDAHL ASHLAND 1073**

BD: 1/13/21 Reg No: 20105818 Tattoo: 1073

G A R EARLY BIRD G A R ASHLAND CHAIR ROCK AMBUSH 1018	G A R DAYLIGHT G A R PROGRESS 830 B/R AMBUSH 28 G A R YIELD GRADE N366 KM BROKEN BOW 002 MILLARS ERICA 530 PRAIRIE PRIDE NEXT STEP 2036 P A R HOMER'S BLACKBIRD 290	CW +61 Marb +0.75 RE +0.86
---	--	---

CED	BW	WW	YW	SC	Milk	DOC	\$W	\$B
+14	-0.2	+76	+147	+0.73	+27	+22	+80	+165

BW: 71	Adj. WW: 760	WWR: 95	1-5 Star Rating • C/E: 3-5 Hftrs/1-2 Cows
C/E	Fleshing	Disposition	
5	4	4	

- Highly recommended for heifers.
- This Ashland son is performing well and is attractive front to rear. He will add great carcass merit.
- 1073's dam is out of the proven donor, Blackbird 7110.



of bulls sell under \$4,500

More genetic power for your money at
Amdahl Angus and Hereford

Lot 79 **AMDAHL GALAXY 1101**

BD: 1/18/21 Reg No: 20074205 Tattoo: 1101

MUSGRAVE AVIATOR AMDAHL GALAXY 922 AMDAHL MISS LAUREL 616-6157	KOUPALS B&B IDENTITY MCATL FOREVER LADY 1429-138 HERBSTER LAUREL 466 AMDAHL'S MISS EMBLAZON 616 O C C MISSING LINK 830M O C C BLACKBIRD 736K O C C BROADSIDE 876B C R R 5411 IDEAL N381	CW +41 Marb +0.02 RE +0.62
--	--	---

CED	BW	WW	YW	SC	Milk	DOC	\$W	\$B
+4	+1.4	+59	+103	+1.30	+15	+6	+48	+114

BW: 89	Adj. WW: 782	WWR: 98	1-5 Star Rating • C/E: 3-5 Hftrs/1-2 Cows
C/E	Fleshing	Disposition	
2	3	3	

- A moderate framed Galaxy son that will make great replacement females.

Angus Bulls

Lot 80

AMDAHL PRIME BEEF 1107

BD: 1/20/21 Reg No: 20074209 Tattoo: 1107

HA PRIME CUT 4493	VERMILION SIRLOIN	CW
AMDAHL PRIME BEEF 9100	HA MISS BLACKCAP 9127	+44
AMDAHL NIGHTWATCH 821 026	O C C AMDAHL EMBLAZON 709U	Marb
SPRING COVE RENO 4021	AMDAHL JD NIGHTWATCH 679-821	+0.37
AMDAHL MISS RENO 9104	KM BROKEN BOW 002	RE
AMDAHL MISS BP 380-509	SPRING COVE LIZA 021	+0.49
	AMDAHL BLOCK PARTY 368	
	AMDAHL MISS HOMER 172-380	

CED	BW	WW	YW	SC	Milk	DOC	\$W	\$B
+7	+1.2	+53	+105	+0.87	+26	+11	+54	+136
BW: 79					Adj. WW: 772		WWR: 97	
1-5 Star Rating • C/E: 3-5 Hftrs/1-2 Cows								
C/E			Fleshing			Disposition		
4			3			4		

- Recommended for heifers or cows.
- This Prime Beef son has a royal pedigree and is backed by many Pathfinder females.
- His maternal brother on the bottom side is Amdahl Range Master 830.



AMDAHL MISS RENO 9104
DAM OF LOT 80



AMDAHL PRIME BEEF 9100
SIRE OF LOT 80

Lot 81

AMDAHL SOUTHERN CHARM 1111

BD: 1/21/21 Reg No: 20074213 Tattoo: 1111

SILVEIRAS CONVERSION 8064	BT CROSSOVER 758N	CW
BUBS SOUTHERN CHARM AA31	EXG SARAS DREAM S609 R3	+59
HICKORY HILL ERICA 009	CONNEALY STIMULUS 8419	Marb
MUSGRAVE BIG SKY	HICKORY HILL ERICA TA32	+0.65
AMDAHL'S DIXIE 369-732	CONNEALY EARNAN 076E	RE
AMDAHL'S DIXIE 014-369	SAV PRIMROSE 7861	+0.84
	CB BLOCK PARTY 156	
	AMDAHL DIXIE 7402 014	

CED	BW	WW	YW	SC	Milk	DOC	\$W	\$B
+2	+4.0	+78	+135	+1.92	+25	+23	+70	+164
BW: 86					Adj. WW: 723		WWR: 100	
1-5 Star Rating • C/E: 3-5 Hftrs/1-2 Cows								
C/E			Fleshing			Disposition		
1			3			4		

- This Southern Charm son is performance bred and maternal heavy.

Lot 82

AMDAHL ROCKETEER 1117

BD: 1/22/21 Reg No: 20069964 Tattoo: 1117

MUSGRAVE AVIATOR	KOUPLAS B&B IDENTITY	CW
AMDAHL'S ROCKETEER 636	MCATL FOREVER LADY 1429-138	+29
AMDAHL ERICA 431-465	G A R PROPHET	Marb
	S A 1117 HOMER 431 228	+0.60
BUSHS CONSENSUS 411	CONNEALY CONSENSUS 7229	RE
SK MISS CONSENSUS ERICA 1	BUSHS MISS DATELINE 480	+0.62
RK MISS BANDO ERICA 9A	CARLSON 5175 BANDO 311	
	R K MISS FORTUNE ERICA 8	

CED	BW	WW	YW	SC	Milk	DOC	\$W	\$B
+4	+1.0	+47	+80	+0.29	+24	+11	+48	+124
BW: 79					Adj. WW: 732		WWR: 92	
1-5 Star Rating • C/E: 3-5 Hftrs/1-2 Cows								
C/E			Fleshing			Disposition		
3			5			4		

- Moderate, long bodied and thick topped Rocketeer son.

Lot 83

AMDAHL ASHLAND 1133

BD: 1/30/21 Reg No: 20105830 Tattoo: 1133

G A R EARLY BIRD	G A R DAYLIGHT	CW
G A R ASHLAND	G A R PROGRESS 830	+24
CHAIR ROCK AMBUSH 1018	B/R AMBUSH 28	Marb
O C C TRANSFORMATION 680T	G A R YIELD GRADE N366	+0.69
PAR TRANSFORMING BROADSIDE83	O C C FOCUS 813F	RE
P A R BLAZING BROADSIDE 78	O C C DIXIE ERICA 603N	+0.74
	O C C BROADSIDE 876B	
	P A R BLAZING RUBY 78	

CED	BW	WW	YW	SC	Milk	DOC	\$W	\$B
+7	+1.8	+53	+93	+0.21	+23	+12	+55	+117
BW: 82					Adj. WW: 749		WWR: 94	
1-5 Star Rating • C/E: 3-5 Hftrs/1-2 Cows								
C/E			Fleshing			Disposition		
3			4			4		

- Recommended for heifers or cows.
- He is a moderate and well made bull that is built for the long haul.
- His dam consistently has the highest ratio of weaning weight to body percentage.



Angus Bulls



MATERNAL BROTHER OF LOT 84

Lot 84 **AMDAHL FLAGSTONE 1137**

BD: 2/1/21 Reg No: 20107718 Tattoo: 1137

HOOVER NO DOUBT	MOGCK BULLSEYE	CW
BALDRIDGE FLAGSTONE F411	MISS BLACKCAP ELLSTON J2	+26
BALDRIDGE ISABEL Y69	STYLES UPGRADE J59	Marb
AMDAHL'S ULTIMATE 802	BALDRIDGE ISABEL T935	+0.53
AMDAHL MISS ULTIMATE 747W-103	O C C LINEBRED 661L	RE
O C C MISS NEWSLINE 747W	P A R ERIKA'S TRAVELER 52	+0.00
	O C C TOTAL 616T	
	KSU MISS NEWSLINE 7197	

CED	BW	WW	YW	SC	Milk	DOC	\$W	\$B
+7	-0.4	+49	+87	+0.69	+27	+18	+57	+105

BW: 80	Adj. WW: 814	WWR: 100	1-5 Star Rating • C/E: 3-5 Hfhrs/1-2 Cows
			C/E Flething Disposition
			4 4 4

- Recommended for heifers or cows.
- 1137 is moderate and stylish.
- His dam is the mother of Amdahl Landmark and posts a nursing ratio of 102 on her 9 calves.

Lot 85 **AMDAHL RANGE MASTER 1140**

BD: 2/4/21 Reg No: 20074252 Tattoo: 1140

HA COWBOY UP 5405	HA OUTSIDE 3008	CW
AMDAHL RANGE MASTER 830	HA BLACKCAP LADY 1602	+20
AMDAHL MISS BP 380-509	AMDAHL BLOCK PARTY 368	Marb
O C C HOMER 650H	AMDAHL MISS HOMER 172-380	+0.41
AMDAHL MISS HOMER 172-380	O C C FOCUS 813F	RE
AMDAHL MISS PP 7155-172	O C C DIXIE ERICA 816B	+0.26
	JAUER PICTURE PERFECT 43 682	
	KSU MISS LEAD ON 7155	

CED	BW	WW	YW	SC	Milk	DOC	\$W	\$B
+3	+3.2	+58	+96	+0.37	+12	+7	+40	+91

BW: 85	Adj. WW: 758	WWR: 95	1-5 Star Rating • C/E: 3-5 Hfhrs/1-2 Cows
			C/E Flething Disposition
			2 4 5

- Line bred for consistency and will add longevity. Keep all the daughters.
- His dam posts a nursing ratio of 103 on her 7 calves.

Lot 86 **AMDAHL RANGE MASTER 1147**

BD: 2/6/21 Reg No: 20069969 Tattoo: 1147

HA COWBOY UP 5405	HA OUTSIDE 3008	CW
AMDAHL RANGE MASTER 830	HA BLACKCAP LADY 1602	+38
AMDAHL MISS BP 380-509	AMDAHL BLOCK PARTY 368	Marb
CB BLOCK PARTY 156	AMDAHL MISS HOMER 172-380	+0.33
AMDAHL MISS BP 154-471	WERNER WAR PARTY 2417	RE
AMDAHL MISS HOMER 62 2170-154	CB 965 MAINLINE	+0.58
	P A R HOMER 62	
	KSU MISS ALLIANCE 2170	

CED	BW	WW	YW	SC	Milk	DOC	\$W	\$B
+1	+3.7	+56	+101	+1.64	+20	+18	+45	+123

BW: 83	Adj. WW: 723	WWR: 90	1-5 Star Rating • C/E: 3-5 Hfhrs/1-2 Cows
			C/E Flething Disposition
			2 4 5

- Stacked with generations of Pathfinder cows.
- 1147 will make great females.



AMDAHL MISS PURSUIT 681-714
MATERNAL GRANDAM OF LOT 87

Lot 87 **AMDAHL RANGE MASTER 1148**

BD: 2/7/21 Reg No: 20106010 Tattoo: 1148

HA COWBOY UP 5405	HA OUTSIDE 3008	CW
AMDAHL RANGE MASTER 830	HA BLACKCAP LADY 1602	+28
AMDAHL MISS BP 380-509	AMDAHL BLOCK PARTY 368	Marb
S A V PURSUIT 0160	AMDAHL MISS HOMER 172-380	+0.53
AMDAHL MISS PURSUIT 681-714	S A V PIONEER 7301	RE
S A 322 GLORY 681 339	S A V ABIGALE 5650	+0.14
	S A 950G GLORY 322 306	
	S A 880H HELMSMAN 339 872	

CED	BW	WW	YW	SC	Milk	DOC	\$W	\$B
+1	+3.3	+43	+81	+0.34	+25	+8	+37	+117

BW: 85	Adj. WW: 732	WWR: 92	1-5 Star Rating • C/E: 3-5 Hfhrs/1-2 Cows
			C/E Flething Disposition
			2 3 4

- 1148 is backed by a good footed and nice uddered female.
- His grandam, Glory 681, is still working strong at age 16.

Angus Bulls

Lot 88 **AMDAHL RESOURCE 1163**
 BD: 2/13/21 Reg No: 20106011 Tattoo: 1163

S A V RESOURCE 1441 GMAR RESOURCE F373 GMAR FOUNDATION B146	RITO 707 OF IDEAL 3407 7075 S A V BLACKCAP MAY 4136 MUSGRAVE FOUNDATION GMAR NEW DESIGN 6009 BUSHES ABSOLUTE POWER BUSHES 4966 LADY 406 R K MR FAME 15 R K MISS FORTUNE ELLUNA	CW +30 Marb -0.40 RE +0.86
---	---	---

CED	BW	WW	YW	SC	Milk	DOC	\$W	\$B
+1	+2.3	+52	+80	+0.22	+23	+16	+50	+77

BW: 81	Adj. WW: 770	WWR: 96	1-5 Star Rating • C/E: 3-5 Hftrs/1-2 Cows
C/E	Fleshing	Disposition	
2	4	4	

• 1163 is a younger bull in the offering but shows exceptional growth and thickness.

Lot 89 **AMDAHL RESOURCE 1170**
 BD: 2/17/21 Reg No: 20106014 Tattoo: 1170

S A V RESOURCE 1441 GMAR RESOURCE F373 GMAR FOUNDATION B146	RITO 707 OF IDEAL 3407 7075 S A V BLACKCAP MAY 4136 MUSGRAVE FOUNDATION GMAR NEW DESIGN 6009 CONNEALY THUNDER CTS 7V03 BELLEMEER MAID 9T02 CONNEALY BLACK GRANITE AMDAHL DIXIE ERICA 163-382	CW +33 Marb +0.48 RE +0.57
---	---	---

CED	BW	WW	YW	SC	Milk	DOC	\$W	\$B
+10	-0.8	+56	+102	+0.64	+27	+8	+62	+106

BW: 69	Adj. WW: 777	WWR: 97	1-5 Star Rating • C/E: 3-5 Hftrs/1-2 Cows
C/E	Fleshing	Disposition	
4	4	4	

• Recommended for heifers or cows.
 • This resource son offers a rare combination of calving ease, thickness and style.

Lot 90 **AMDAHL RANGE MASTER 1176**
 BD: 2/25/21 Reg No: 20069979 Tattoo: 1176

HA COWBOY UP 5405 AMDAHL RANGE MASTER 830 AMDAHL MISS BP 380-509	HA OUTSIDE 3008 HA BLACKCAP LADY 1602 AMDAHL BLOCK PARTY 368 AMDAHL MISS HOMER 172-380 TOKACH UPDATE 9009 S K MISS TRAVEL LOG ELBA 17 AMDAHL'S MODERATOR 829 P A R HEAVY BLAZE 272	CW +36 Marb +0.16 RE +0.61
--	---	---

CED	BW	WW	YW	SC	Milk	DOC	\$W	\$B
+2	+2.7	+57	+100	+1.13	+15	+12	+45	+117

BW: 80	Adj. WW: 781	WWR: 98	1-5 Star Rating • C/E: 3-5 Hftrs/1-2 Cows
C/E	Fleshing	Disposition	
3	3	4	

• A Range Master son that is bred to make replacement kind of females.
 • His dam posts a nursing ratio of 3 at 105.

Lot 91 **AMDAHL WINDBREAK 1177**
 BD: 2/26/21 Reg No: 20106976 Tattoo: 1177

V D A R WIND BREAK 7062 PAINTROCK WINDBREAK 229-7 KATE OF PAINTROCK 541-2	V D A R REALLY WINDY 4097 V D A R LASS 0307 PAINTROCK EXT 239-299-0 KATE OF PAINTROCK 379-0 KM BROKEN BOW 002 SPRING COVE LIZA 021 MILL BAR HICKOK 7242 D R ERICA 104	CW +39 Marb +0.83 RE +0.32
---	--	---

CED	BW	WW	YW	SC	Milk	DOC	\$W	\$B
+5	+2.1	+68	+117	+1.02	+22	+21	+63	+137

BW: 81	Adj. WW: 772	WWR: 97	1-5 Star Rating • C/E: 3-5 Hftrs/1-2 Cows
C/E	Fleshing	Disposition	
3	4	4	

• Recommended for larger heifers and cows.
 • 1177 will add style and cow making ability.
 • His dam is a nice uddered ET daughter out of the great 544 cow.

Lot 92 **AMDAHL ROCKETEER 1178**
 BD: 2/27/21 Reg No: 20106047 Tattoo: 1178

AMDAHL'S ROCKETEER 636 AMDAHL ROCKETEER 9167 AMDAHL MISS WINDY 459-621	MUSGRAVE AVIATOR AMDAHL ERICA 431-465 CROOK MT LINE WINDY 2870 AMDAHL MISS LINK 515-459 W H S LIMELIGHT 64V D R BLACKBIRD 133 AMDAHL'S ULTIMATE 802 O C C MISS NEWSLINE 747W	CW +46 Marb -0.08 RE +0.55
--	---	---

CED	BW	WW	YW	SC	Milk	DOC	\$W	\$B
+7	+1.4	+63	+115	+1.52	+25	+24	+63	+114

BW: 77	Adj. WW: 756	WWR: 95	1-5 Star Rating • C/E: 3-5 Hftrs/1-2 Cows
C/E	Fleshing	Disposition	
3	4	4	

• Recommended for heifers or cows.
 • 1178 is off to a great start and will continue to grow and perform.
 • His dam posts a nursing ratio of 103 on her 5 calves.

Lot 93 **AMDAHL ROCKETEER 1180**
 BD: 3/1/21 Reg No: 20106048 Tattoo: 1180

AMDAHL'S ROCKETEER 636 AMDAHL ROCKETEER 9167 AMDAHL MISS WINDY 459-621	MUSGRAVE AVIATOR AMDAHL ERICA 431-465 CROOK MT LINE WINDY 2870 AMDAHL MISS LINK 515-459 CONNEALY EARNAN 076E SAV PRIMROSE 7861 AMDAHL'S EMBAZON 0005 K S U MISS 602C 3198	CW +28 Marb +0.38 RE +0.25
--	--	---

CED	BW	WW	YW	SC	Milk	DOC	\$W	\$B
+5	+1.3	+49	+83	+0.73	+31	+7	+62	+99

BW: 80	Adj. WW: 834	WWR: 104	1-5 Star Rating • C/E: 3-5 Hftrs/1-2 Cows
C/E	Fleshing	Disposition	
3	4	4	

• Recommended for larger framed heifers or cows.
 • 1180 is a well made Rocketeer grandson that offers exceptional growth, earning a weaning ratio of 104.

Hereford Reference Sires



BCC UPROAR 946G

BD: 02/18/2019 Reg No: 44054179 Tattoo: 946

SHF TAHOE R117 T100
HAROLDSON'S UPGRADE T100 33D
MOHICAN MISSEY 93W

NJW 73S W18 HOMETOWN 10Y ET
BCC SCARLET 403B [DOD]
BCC DARLA 202Z

SHF RIB EYE M326 R117
SHF LADY 512 L73 [DOD]
MOHICAN RANGELAND 221R
MOHICAN MISSEY 401R ET
SHF WONDER M326 W18 ET
NJW P606 72N DAYDREAM 73S
THM DURANGO 4037
BCC MARIA 836

CED	BW	WW	YW	MM	M&G	SC	REA	Marb
+3.4	+4.0	+53	+92	+18	+44	+1.0	+0.37	+0.16

Uproar is an excellent outcross on our line one Herefords and will add pigment, thickness and natural muscle structure to his progeny. We are very excited about this new, young herd sire.



BEHM 100W CUDA 504C

BD: 03/04/2015 Reg No: P43636764 Tattoo: 504

KCF BENNETT 3008 M326
NJW 73S M326 TRUST 100W ET
NJW P606 72N DAYDREAM 73S

KCF BENNETT 9126J R294
BEHM R294 JASMAN102Y [DOD]
CPH MS WRANGLER 1W [DOD]

RRH MR FELT 3008
KCF MISS 459 F284
PW VICTOR BOOMER P606
NJW 94J DEW 72N
CL 1 DOMINO 9126J 1ET
KCF MISS 3008 N344
JDH 15 WRANGLER 25L
CPH MISS PRINCESS 13H

CED	BW	WW	YW	MM	M&G	SC	REA	Marb
+12.3	-0.6	+69	+114	+47	+81	+1.3	+0.69	+0.49

Cuda will add true performance with style.



CL 1 DOMINO 6104D

BD: 01/11/2016 Reg No: 43691785 Tattoo: 6104

CL 1 DOMINO 216Z 1ET
CL1 DOMINO 4168B 1ET
CL 1 DOMINETTE 7136T 1ET [DOD]

CL 1 DOMINO 105Y
CL 1 DOMINETTE 362A
CL1 DOMINETTE 1152Y

CL 1 DOMINO 860U
CL 1 DOMINETTE 759T 1ET
L1 DOMINO 890061
CL 1 DOMINETTE 273M 1ET [DOD]
CL 1 DOMINO 929W
CL 1 DOMINETTE 9140W 1ET [DOD]
HH ADVANCE 9016W ET
CL 1 DOMINETTE 717T

CED	BW	WW	YW	MM	M&G	SC	REA	Marb
+5.1	+0.3	+35	+71	+43	+61	+0.7	+0.18	+0.18

6104 was our pick of the bulls in Coopers' 2017 sale. He is out of a son of our 7136T cow. He adds CE and thickness.



KB L1 DOMINO 5104B

BD: 09/06/2014 Reg No: 43526961 Tattoo: 5104

HH ADVANCE 7034T ET
HH ADVANCE 1207Y
HH MISS ADVANCE 6054S

CL 1 DOMINO 9126J 1ET
MONTANA MISS 740T
MONTANA MISS 756

L1 DOMINO 03571
HH MISS ADVANCE 1088L [DOD]
CL 1 DOMINO 320N
HH MISS ADVANCE 4053P
HH ADVANCE 767G 1ET
CL 1 DOMINETTE 490 [DOD]
JA L1 DOMINO 503 2ET
MONTANA MISS 503

CED	BW	WW	YW	MM	M&G	SC	REA	Marb
+5.6	+2.0	+52	+81	+25	+51	+0.9	+0.25	+0.06

5104 adds length of body and is one of the top 1207 sons in the breed.

Hereford Fall Bulls



Lot 94 **TA CUDA 0101H**
 BD: 9/7/20 Reg No: 44278643 Tattoo: 0101

NJW 735 M326 TRUST 100W ET	KCF BENNETT 3008 M326	Act. BW
BEHM 100W CUDA 504C	NJW P606 72N DAYDREAM 73S	75
BEHM R294 JASMAN102Y	KCF BENNETT 9126J R294	Adj. 205
	CPH MS WRANGLER 1W	715
CHURCHILL SENSATION 028X	UPS DOMINO 3027	Adj 365
TA L1 DOMINETTE 820F ET	CHURCHILL LADY 7202T ET	1193
MONTANA MISS 745T	KB L1 DOMINO 454P	
	MONTANA MISS 210	

CED	BW	WW	YW	MM	M&G	SC	REA	Marb	CHB
+9	+0.4	+58	+95	+42	+71	+1.3	+0.52	+0.3	+\$147

• **Sale Feature**
 • Scurred
 • Fall bull
 • Recommended for heifers and cows.
 • 0101 is a larger framed Cuda son that will be sure to add performance.

1-5 Star Rating • C/E: 3-5 Hfhrs/1-2 Cows

C/E	Fleshing	Disposition
5	5	4

Hereford Two-Year-Old Bulls



Lot 95 **TA SENSATION 0343H**
 BD: 1/25/20 Reg No: 44180287 Tattoo: 0343

CHURCHILL SENSATION 028X	UPS DOMINO 3027	Act. BW
UPS SENSATION 2504 ET	CHURCHILL LADY 7202T ET	81
NJW BW LADYSPORT DEW 78P ET	RU 20X BOULDER 57G	Adj. 205
	SADDLE VLY LADYSPORT 120	710
KB L1 DOMINO 406B	HH ADVANCE 1038Y ET	Adj 365
TA L1 DOMINETTE 729E	KB 11 DOMINETTE 195Y	1238
TA L1 DOMINETTE 516C	KB L1 DOMINO 1202Y	
	KB L1 DOMINETTE 376 A	

CED	BW	WW	YW	MM	M&G	SC	REA	Marb	CHB
+4.3	+1.5	+55	+88	+35	+63	+1.1	+0.41	+0.05	+\$94

• **Sale Feature**
 • Horned
 • Recommended for heifers or cows.
 • Thick topped and muscular with true herd bull look.
 • He was used in our herd in the 2021 breeding season.

1-5 Star Rating • C/E: 3-5 Hfhrs/1-2 Cows

C/E	Fleshing	Disposition
3	5	4

Weaning Weight Angus breed: 624 lbs | Ours 796 lbs
Average Birth Weight Angus breed: 80 lbs | Ours 76 lbs
Average Doc EPD for Angus breed: 16 | Ours 24
Average SC EPD for the Angus breed: 0.76 | Ours 1.18



— Hereford Two-Year-Old Bulls —

Lots 96-97

- Full brothers out of 376 cow and 6104 sire: 0359 and 0360
- Horned
- These 2 full brothers are a great opportunity to put together and use in any herd.
- It's hard to find 2 full brothers anywhere that offer this kind of length, foot structure and royal pedigree.



KB L1 DOMINETTE 376 A
DAM OF LOTS 96-97



LOT
96



LOT
97



LOT
98

Lot 96 **TA L1 DOMINO 0359H ET**
 BD: 3/12/20 Reg No: 44173212 Tattoo: 0359

CL 1 DOMINO 41688 1ET	CL 1 DOMINO 216Z 1ET	Act. BW
CL 1 DOMINO 6104D	CL 1 DOMINETTE 7136T 1ET	ET
CL 1 DOMINETTE 362A	CL 1 DOMINO 105Y	Adj. 205
	CL 1 DOMINETTE 1152Y	627
HH ADVANCE 1207Y	HH ADVANCE 7034T ET	Adj. 365
KB L1 DOMINETTE 376 A	HH MISS ADVANCE 6054S	1304
KB L1 DOMINETTE 167Y	CL 1 DOMINO 795T 1ET	
	KB L1 DOMINETTE 6136	

CED	BW	WW	YW	MM	M&G	SC	REA	Marb	CHB
+1.2	+3.1	+48	+84	+34	+58	+1	+0.2	+0.05	+\$111

1-5 Star Rating • C/E: 3-5 Hfhrs/1-2 Cows

C/E	Fleshing	Disposition
3	4	5

Lot 97 **TA L1 DOMINO 0360H ET**
 BD: 3/12/20 Reg No: 44173213 Tattoo: 0360

CED	BW	WW	YW	MM	M&G	SC	REA	Marb	CHB
+1.2	+3.1	+48	+84	+34	+58	+1	+0.2	+0.05	+\$111

Act. BW	Adj. 205	Adj. 365
ET	728	1293

1-5 Star Rating • C/E: 3-5 Hfhrs/1-2 Cows

C/E	Fleshing	Disposition
3	4	5

Lot 98 **TA L1 ADVANCE 0326H ET**
 BD: 1/18/20 Reg No: 44173059 Tattoo: 0326

CL 1 DOMINO 206M	CL 1 DOMINO 9126J 1ET	Act. BW
HH ADVANCE 5104R	CL 1 DOMINETTE 825H	ET
HH MISS ADVANCE 153L	CL 1 DOMINO 986J	Adj. 205
	HH MISS ADVANCE 912J	798
JH MARK 9454 1ET	JD BIG ARTHUR 180	Adj. 365
KB L1 MARKETTE 243	IMR L1 MARKETTE 6062	1333
KB L1 DOMINETTE 827	HH ADVANCE 6046F	
	SL MISS DOMINA 003	

CED	BW	WW	YW	MM	M&G	SC	REA	Marb	CHB
+1.5	+1.6	+48	+74	+27	+51	+1	+0.14	+0.03	+\$98

1-5 Star Rating • C/E: 3-5 Hfhrs/1-2 Cows

C/E	Fleshing	Disposition
2	4	5

• 0326ET is a long bodied 5104R sired bull that is out of the prolific donor cow 243. He will make tremendous females that will stand the test of time.

Hereford Two-Year-Old Bulls



Lot 99 **TA L1 DOMINO 0350H**
 BD: 1/30/20 Reg No: 44177367 Tattoo: 0350

HH ADVANCE 1207Y	HH ADVANCE 7034T ET	Act. BW
KB L1 DOMINO 5104B	HH MISS ADVANCE 6054S	83
MONTANA MISS 740T	CL 1 DOMINO 9126J 1ET	Adj. 205
	MONTANA MISS 756	715
KB L1 DOMINO 406B	HH ADVANCE 1038Y ET	Adj. 365
TA L1 DOMINETTE 750E	KB L1 DOMINETTE 195Y	1174
MONTANA MISS TA 518C	CL 1 DOMINO 2215Z 1ET	
	MONTANA MISS 208Z	

CED	BW	WW	YW	MM	M&G	SC	REA	Marb	CHB
-	-	-	-	-	-	-	-	-	-

• Horned
 • Sells purebred no papers.
 • Red to the ground with good muscle structure.

1-5 Star Rating • C/E: 3-5 Hfhrs/1-2 Cows

C/E	Fleshing	Disposition
3	3	5

Hereford Yearling Bulls



Lot 100 **TA UPROAR 105J**
 BD: 1/2/21 Reg No: 44278353 Tattoo: 105

HAROLDSON'S UPGRADE T100 33D	SHF TAHOE R117 T100	Act. BW
BCC UPROAR 946G	MOHICAN MISSEY 93W	93
BCC SCARLET 403B	NJW 73S W18 HOMETOWN 10Y ET	Adj. 205
	BCC DARLA 202Z	760
CL 1 DOMINO 2121Z	CL 1 DOMINO 9122W 1ET	
TA L1 DOMINETTE 523C	CL 1 DOMINETTE 924W 1ET	
KB L1 DOMINETTE 267 Z	KB L1 DOMINO 615Z	
	KB L1 DOMINETTE	

CED	BW	WW	YW	MM	M&G	SC	REA	Marb	CHB
-3.7	+5.1	+57	+98	+21	+49	+1.1	+0.42	+0.07	+\$113

• Sale Feature
 • Scurred
 • 105 is a deep ribbed performance bull that is backed by one of the finest Hereford cows on the ranch.

1-5 Star Rating • C/E: 3-5 Hfhrs/1-2 Cows

C/E	Fleshing	Disposition
1	5	5

Lot 101 **TA UPROAR 112J**
 BD: 1/11/21 Reg No: 44278359 Tattoo: 112

HAROLDSON'S UPGRADE T100 33D	SHF TAHOE R117 T100	Act. BW
BCC UPROAR 946G	MOHICAN MISSEY 93W	83
BCC SCARLET 403B	NJW 73S W18 HOMETOWN 10Y ET	Adj. 205
	BCC DARLA 202Z	697
CL 1 DOMINO 0152K	HH ADVANCE 8093H	
KB L1 DOMINETTE 9172W	CL 1 DOMINETTE 874H 1ET	
KB L1 DOMINETTE 701	CL 1 DOMINO 501	
	MCH MS L1 DM 2171 ET	

CED	BW	WW	YW	MM	M&G	SC	REA	Marb	CHB
+2.4	+2.6	+40	+69	+22	+42	+0.5	+0.24	+0.10	+\$105

• Polled
 • Dark and red to the ground as well as strong topped. Backed by a powerful cow.

1-5 Star Rating • C/E: 3-5 Hfhrs/1-2 Cows

C/E	Fleshing	Disposition
3	5	4



60%

of bulls sell under \$4,500

More genetic power for your money at
 Amdahl Angus and Hereford

Hereford Yearling Bulls



BCC UPROAR 946G
SIRE OF LOTS 102-105

Lot 102	BD: 1/17/21	Reg No: 44278363	Tattoo: 119
HAROLDSON'S UPGRADE T100 33D	SHF TAHOE R117 T100	Act. BW	
BCC UPROAR 946G	MOHICAN MISSEY 93W	84	
BCC SCARLET 403B	NJW 73S W18 HOMETOWN 10Y ET	Adj. 205	
	BCC DARLA 202Z	792	
HH ADVANCE 2158Z	L1 DOMINO 08469		
TA L1 DOMINETTE 934G	HH MISS ADVANCE 6188S		
MONTANA MISS 208Z	CL 1 DOMINO 849U		
	MONTANA MISS 0147X		

CED	BW	WW	YW	MM	M&G	SC	REA	Marb	CHB
-2.5	+5.1	+55	+92	+24	+51	+1.1	+0.39	+0.09	+\$109

• Sale Feature
• Polled
• He will add length of body and style

1-5 Star Rating • C/E: 3-5 Hfhrs/1-2 Cows		
C/E	Fleshing	Disposition
1	4	4



LOT 103



LOT 104

Lot 105	BD: 1/27/21	Reg No: 44275274	Tattoo: 126
HAROLDSON'S UPGRADE T100 33D	SHF TAHOE R117 T100	Act. BW	
BCC UPROAR 946G	MOHICAN MISSEY 93W	76	
BCC SCARLET 403B	NJW 73S W18 HOMETOWN 10Y ET	Adj. 205	
	BCC DARLA 202Z	771	
KB L1 DOMINO 504C ET	HH ADVANCE 2005Z		
TA L1 DOMINETTE 842F	CL 1 DOMINETTE 7136T 1ET		
MONTANA MISS TA 522C	CL 1 DOMINO 2121Z		
	MONTANA MISS 137Y		

CED	BW	WW	YW	MM	M&G	SC	REA	Marb	CHB
+5.0	+1.8	+50	+83	+24	+49	+1.0	+0.41	+0.19	+\$121

• Horned
• Recommended for heifers or cows.
• 126 will add longevity and fleshing ability.

1-5 Star Rating • C/E: 3-5 Hfhrs/1-2 Cows		
C/E	Fleshing	Disposition
4	5	4

Lot 103	BD: 1/7/21	Reg No: 44278358	Tattoo: 111
HAROLDSON'S UPGRADE T100 33D	SHF TAHOE R117 T100	Act. BW	
BCC UPROAR 946G	MOHICAN MISSEY 93W	82	
BCC SCARLET 403B	NJW 73S W18 HOMETOWN 10Y ET	Adj. 205	
	BCC DARLA 202Z	809	
HH ADVANCE 2158Z	L1 DOMINO 08469		
TA L1 DOMINETTE 897F	HH MISS ADVANCE 6188S		
KB L1 DOMINETTE 9192W	KB L1 DOMINO 521R		
	KB L1 DOMINETTE 2127		

CED	BW	WW	YW	MM	M&G	SC	REA	Marb	CHB
+0.4	+4.1	+53	+88	+22	+49	+1.1	+0.42	+0.11	+\$111

• Sale Feature
• Polled
• 111 is a muscular, wide topped and dark red Uproar son that will work well in any herd.

1-5 Star Rating • C/E: 3-5 Hfhrs/1-2 Cows		
C/E	Fleshing	Disposition
1	4	3

Lot 104	BD: 1/15/21	Reg No: 44278362	Tattoo: 118
HAROLDSON'S UPGRADE T100 33D	SHF TAHOE R117 T100	Act. BW	
BCC UPROAR 946G	MOHICAN MISSEY 93W	88	
BCC SCARLET 403B	NJW 73S W18 HOMETOWN 10Y ET	Adj. 205	
	BCC DARLA 202Z	769	
KB L1 DOMINO 0102X	CL 1 DOMINO 592R 1ET		
TA L1 DOMINETTE 624	KB L1 DOMINETTE 616		
KB L1 DOMINETTE 656	CL 1 DOMINO 9126J 1ET		
	KB L1 DOMINETTE 353 ET		

CED	BW	WW	YW	MM	M&G	SC	REA	Marb	CHB
+1.4	+3.2	+44	+76	+25	+47	+1.0	+0.36	+0.09	+\$116

• Sale Feature
• Horned
• Larger framed Uproar son that will add mass and performance.

1-5 Star Rating • C/E: 3-5 Hfhrs/1-2 Cows		
C/E	Fleshing	Disposition
2	4	4



GREAT LUNCH CREW

Hereford Yearling Bulls

Lots 106-107

- Scurred
- Recommended for heifers or cows.
- These two full brother Cuda sons offer exceptional performance and outstanding cow power.



KB L1 DOMINETTE 376 A
DAM OF LOTS 106 & 107

Lot 106 **TA CUDA 138J ET**
BD: 2/17/21 Reg No: 44278657 Tattoo: 138

NJW 73S M326 TRUST 100W ET	KCF BENNETT 3008 M326		Act. BW
BEHM 100W CUDA 504C	NJW P606 72N DAYDREAM 73S		ET
BEHM R294 JASMAN102Y	KCF BENNETT 9126J R294		Adj. 205
	CPH MS WRANGLER 1W		866
	HH ADVANCE 7034T ET		
HH ADVANCE 1207Y	HH MISS ADVANCE 6054S		
KB L1 DOMINETTE 376 A	CL 1 DOMINO 795T 1ET		
KB L1 DOMINETTE 167Y	KB L1 DOMINETTE 6136		

CED	BW	WW	YW	MM	M&G	SC	REA	Marb	CHB
+5.7	+2.6	+64	+105	+36	+68	+1.2	+0.46	+0.21	+\$140

1-5 Star Rating • C/E: 3-5 Hftrs/1-2 Cows

C/E	Fleshing	Disposition
4	4	5

Lot 107 **TA CUDA 135J ET**
BD: 2/14/21 Reg No: 44278658 Tattoo: 135

CED	BW	WW	YW	MM	M&G	SC	REA	Marb	CHB
+5.7	+2.6	+64	+105	+36	+68	+1.2	+0.46	+0.21	+\$140

1-5 Star Rating • C/E: 3-5 Hftrs/1-2 Cows

Act. BW	Adj. 205	C/E	Fleshing	Disposition
ET	768	4	4	4



**LOT
108**

Lot 108 **TA UPROAR 131J**
BD: 2/5/21 Reg No: 44275278 Tattoo: 131

HAROLDSON'S UPGRADE T100 33D	SHF TAHOE R117 T100		Act. BW
BCC UPROAR 946G	MOHICAN MISSEY 93W		79
BCC SCARLET 403B	NJW 73S W18 HOMETOWN 10Y ET		Adj. 205
	BCC DARLA 202Z		804
	HH ADVANCE 2005Z		
KB L1 DOMINO 504C ET	CL 1 DOMINETTE 7136T 1ET		
TA L1 DOMINETTE 830F	CL 1 DOMINO 2121Z		
TA L1 DOMINETTE 625D	KB L1 DOMINETTE 3157 A		

CED	BW	WW	YW	MM	M&G	SC	REA	Marb	CHB
+2.5	+3.0	+55	+89	+25	+53	+1.1	+0.44	+0.17	+\$119

1-5 Star Rating • C/E: 3-5 Hftrs/1-2 Cows

C/E	Fleshing	Disposition
2	4	5

• Horned
• Recommended for larger framed heifers or cows.
• 131 is a deep ribbed, dark to the ground Uproar son with maternal merit.



BCC UPROAR 946G
SIRE OF LOTS 108 & 109

Lot 109 **TA UPROAR 133J**
BD: 2/11/21 Reg No: 44275282 Tattoo: 133

HAROLDSON'S UPGRADE T100 33D	SHF TAHOE R117 T100		Act. BW
BCC UPROAR 946G	MOHICAN MISSEY 93W		84
BCC SCARLET 403B	NJW 73S W18 HOMETOWN 10Y ET		Adj. 205
	BCC DARLA 202Z		819
	UPS DOMINO 3027		
CHURCHILL SENSATION 028X	CHURCHILL LADY 7202T ET		
TA L1 DOMINETTE 826F ET	KB L1 DOMINO 454P		
MONTANA MISS 745T	MONTANA MISS 210		

CED	BW	WW	YW	MM	M&G	SC	REA	Marb	CHB
+0.9	+3.0	+54	+88	+29	+56	+1.2	+0.49	+0.12	+\$115

1-5 Star Rating • C/E: 3-5 Hftrs/1-2 Cows

C/E	Fleshing	Disposition
2	4	5

• Horned
• 133 is a powerful, thick topped Uproar son with great depth of body.

Hereford Yearling Bulls

Lot 110 **TA UPROAR 129J**
 BD: 2/3/21 Reg No: 44275276 Tattoo: 129

HAROLDSON'S UPGRADE T100 33D BCC UPROAR 946G BCC SCARLET 403B	SHF TAHOE R117 T100 MOHICAN MISSEY 93W NJW 73S W18 HOMETOWN 10Y ET BCC DARLA 202Z HH ADVANCE 221 ET HH MISS ADVANCE 7003T HH ADVANCE 2036Z ET MONTANA MISS 108Y
	Act. BW 80 Adj. 205 769

CED	BW	WW	YW	MM	M&G	SC	REA	Marb	CHB
+3.0	+2.6	+51	+81	+24	+50	+0.9	+0.44	+0.12	+\$119

- Scurred
- Recommended for larger framed heifers or cows.
- Keep all the daughters out of this stylish and dark red future herd sire.

Lot 112 **TA UPROAR 128J**
 BD: 1/30/21 Reg No: 44278364 Tattoo: 128

HAROLDSON'S UPGRADE T100 33D BCC UPROAR 946G BCC SCARLET 403B	SHF TAHOE R117 T100 MOHICAN MISSEY 93W NJW 73S W18 HOMETOWN 10Y ET BCC DARLA 202Z HH ADVANCE 7034T ET HH MISS ADVANCE 6054S CL 1 DOMINO 849U MONTANA MISS 973W
	Act. BW 83 Adj. 205 613

CED	BW	WW	YW	MM	M&G	SC	REA	Marb	CHB
+3.0	+2.9	+44	+73	+22	+43	+1.1	+0.23	+0.10	+\$107

- Scurred
- Deep ribbed and maternal oriented bull.

Lot 114 **TA UPROAR 134J**
 BD: 2/13/21 Reg No: 44275283 Tattoo: 134

HAROLDSON'S UPGRADE T100 33D BCC UPROAR 946G BCC SCARLET 403B	SHF TAHOE R117 T100 MOHICAN MISSEY 93W NJW 73S W18 HOMETOWN 10Y ET BCC DARLA 202Z CL 1 DOMINO 860U CL 1 DOMINETTE 759T 1ET CHURCHILL MVP 188 CHURCHILL LADY 103
	Act. BW 86 Adj. 205 741

CED	BW	WW	YW	MM	M&G	SC	REA	Marb	CHB
-1.2	+3.6	+49	+83	+23	+48	+0.9	+0.43	+0.01	+\$103

- Horned
- 134 is out of a beautiful, moderate and long bodied female.
- He is a darker red, white legged Uproar son.

Lot 116 **TA UPROAR 141J**
 BD: 2/19/21 Reg No: 44275285 Tattoo: 141

HAROLDSON'S UPGRADE T100 33D BCC UPROAR 946G BCC SCARLET 403B	SHF TAHOE R117 T100 MOHICAN MISSEY 93W NJW 73S W18 HOMETOWN 10Y ET BCC DARLA 202Z HH ADVANCE 2005Z CL 1 DOMINETTE 7136T 1ET CL 1 DOMINO 2215Z 1ET KB L1 DOMINETTE 1156Y
	Act. BW 68 Adj. 205 608

CED	BW	WW	YW	MM	M&G	SC	REA	Marb	CHB
+2.0	+3.7	+53	+89	+24	+50	+1.0	+0.40	+0.13	+\$115

- Twin with Lot 115

Lot 111 **TA DOMINO 104J**
 BD: Pending Reg No: Pending Tattoo: 104

HH ADVANCE 1207Y KB L1 DOMINO 5104B MONTANA MISS 740T	HH ADVANCE 7034T ET HH MISS ADVANCE 6054S CL 1 DOMINO 9126J 1ET MONTANA MISS 756 CL 1 DOMINO 9122W 1ET CL 1 DOMINETTE 055X KB L1 DOMINO 1202Y KB L1 DOMINETTE 376 A
	Act. BW 82 Adj. 205 652

CED	BW	WW	YW	MM	M&G	SC	REA	Marb	CHB
+3.2	+2.1	+58	+90	+31	+57	+1.3	+0.55	+0.36	+\$118

- Horned
- 104 will add length and maternal power.

Lot 113 **COMMERCIAL 130J**
 BD: Commercial Tattoo: 130

HH ADVANCE 1207Y KB L1 DOMINO 5104B MONTANA MISS 740T	HH ADVANCE 7034T ET HH MISS ADVANCE 6054S CL 1 DOMINO 9126J 1ET MONTANA MISS 756
	Act. BW 74 Adj. 205 658

CED	BW	WW	YW	MM	M&G	SC	REA	Marb	CHB
-	-	-	-	-	-	-	-	-	-

- Horned
- Recommended for heifers or cows.
- He sells purebred with no papers.
- Dark red and good footed heifer bull that will make replacement kind of females.

Lot 115 **TA UPROAR 140J**
 BD: 2/19/21 Reg No: 44275284 Tattoo: 140

HAROLDSON'S UPGRADE T100 33D BCC UPROAR 946G BCC SCARLET 403B	SHF TAHOE R117 T100 MOHICAN MISSEY 93W NJW 73S W18 HOMETOWN 10Y ET BCC DARLA 202Z HH ADVANCE 2005Z CL 1 DOMINETTE 7136T 1ET CL 1 DOMINO 2215Z 1ET KB L1 DOMINETTE 1156Y
	Act. BW 67 Adj. 205 640

CED	BW	WW	YW	MM	M&G	SC	REA	Marb	CHB
+2.3	+3.7	+55	+92	+24	+51	+1.1	+0.42	+0.13	+\$115

- 140 is polled and 141 is horned.
- Recommended for heifers or cows.
- These twin brothers will make a great breeding combo together and would add calving ease and style.



BULLS ARE FEED A VERY HIGH ROUGHAGE RATION TO ENSURE LONGEVITY AND SOUNDNESS

Angus Open Females



**LOT
117**

Lot 117 **AMDAHL MISS ISABEL 1001**
 BD: 12/26/20 Reg No: 20103283 Tattoo: 1001

HOOVER NO DOUBT	MOGCK BULLSEYE	CW
BALDRIDGE FLAGSTONE F411	MISS BLACKCAP ELLSTON J2	+44
BALDRIDGE ISABEL Y69	STYLES UPGRADE J59	Marb
SCHELKES CONSENSUS 2327A	BALDRIDGE ISABEL T935	+0.44
AMDAHL MISS CONSENSUS 72-418	CONNEALY CONSENSUS 7229	RE
PAR TRAVELING WESTWIND 72	D 104 MONIQUE R585	+0.27
	G A R TRAVELER 1489	
	P A R TRAVELING WESTWIND D30	

CED	BW	WW	YW	SC	Milk	DOC	SW	SB
+2	+2.5	+61	+113	+0.56	+36	+27	+72	+123

• 1001 comes with lots of length, thickness and overall correctness. She earned a weaning ratio of 106. Her dam has a weaning ratio of 105 on 4 calves.



**PAR TRAVELING
WESTWIND 72**
 GRANDAM OF LOT 117



**AMDAHL'S
BLACKBIRD
133-410**
 DAM OF LOT 119



DAM OF LOT 119
 ALONG WITH
 MATERNAL BROTHER

Lot 118 **AMDAHL ERICA 1060**
 BD: 1/11/21 Reg No: 20109185 Tattoo: 1060

G A R SURE FIRE	CONNEALY IN SURE 8524	CW
G A R PHOENIX	CHAIR ROCK 5050 G A R 8086	+67
G A R PROPHET N744	G A R PROPHET	Marb
MILLARS BROKEN BOW 799	G A R DAYBREAK 440	+0.92
AMDAHL ERICA 9114	KM BROKEN BOW 002	RE
AMDAHL ERICA 543-7127	MILLARS ERICA 530	+0.77
	MUSGRAVE BIG SKY	
	PAR BROADSIDE ECHELON 543	

CED	BW	WW	YW	SC	Milk	DOC	SW	SB
+6	+2.8	+85	+141	+1.32	+24	+15	+80	+173

• 1060 is a performance powerhouse. She earned a weaning weight ratio of 110 and is long bodied with lots of style.



**LOT
118**



**LOT
119**

Lot 119 **AMDAHL BLACKBIRD 1105**
 BD: 1/19/21 Reg No: 20105889 Tattoo: 1105

SITZ STELLAR 726D	MOHNEN SUBSTANTIAL 272	CW
SITZ RESILIENT 10208	SITZ PRIDE 200B	+44
SITZ MISS BURGESS 1856	SITZ TOP GAME 561X	Marb
SA 652 MISSING LINK 848 620	SITZ MISS BURGESS 4381	+0.31
AMDAHL'S BLACKBIRD 133-410	SA 830M MISSING LINK 652 325	RE
D R BLACKBIRD 133	S A 841 ANCHOR 620 075	+0.52
	S A V FINAL ANSWER 0035	
	D R BLACKBIRD 2511	

CED	BW	WW	YW	SC	Milk	DOC	SW	SB
+10	-0.3	+64	+110	+0.68	+32	+15	+77	+121

• Sale Feature

• 1105 is a larger framed Resilient daughter that is certain to find her way to the donor pen. She is backed by two donor cows on her bottom side and earned a weaning ratio of 104. Her dam, Blackbird 410, has earned a nursing ratio of 102 on her 4 calves.

Angus Open Females

Lot 120 AMDAHL ERICA MAY 1065

BD: 1/12/21 Reg No: 20105815 Tattoo: 1065

G A R EARLY BIRD
G A R ASHLAND
CHAIR ROCK AMBUSH 1018

G A R SURE FIRE
AMDAHL ERICA MAY 9106
AMDAHL ERICA 465-760

G A R DAYLIGHT
G A R PROGRESS 830
B/R AMBUSH 28
G A R YIELD GRADE N366
CONNEALY IN SURE 8524
CHAIR ROCK 5050 G A R 8086
S A V PURSUIT 0160
AMDAHL ERICA 431-465

CW
+46
Marb
+0.81
RE
+0.87

CED	BW	WW	YW	SC	Milk	DOC	\$W	\$B
+9	+2.5	+75	+127	+1.84	+32	+22	+81	+143

• 1065 is a very correct and feminine female that is backed by two great donor cows on her bottom side- 760 and the 465 cow. She earned a weaning weight ratio of 109.



AMDAHL ROCKETEER 636
MATERNAL BROTHER OF LOTS 121 & 122

Lots 121-122



AMDAHL ERICA 431-465
DAM OF LOTS 121 & 122



AMDAHL JET BLACK 093
MATERNAL BROTHER OF LOTS 121 & 122

Lot 121 AMDAHL ERICA 1052

BD: 1/9/21 Reg No: 20105828 Tattoo: 1052

G A R EARLY BIRD
G A R ASHLAND
CHAIR ROCK AMBUSH 1018

 G A R PROPHET
AMDAHL ERICA 431-465
S A 1117 HOMER 431 228

G A R DAYLIGHT
G A R PROGRESS 830
B/R AMBUSH 28
G A R YIELD GRADE N366
C R A BEXTOR 872 5205 608
G A R OBJECTIVE 1885
S A 650H HOMER 1117 911
S A 8210 ANCHOR 228 630

CW
+46
Marb
+1.28
RE
+0.74

CED	BW	WW	YW	SC	Milk	DOC	\$W	\$B
+11	+0.7	+74	+129	+0.43	+29	+22	+83	+153

• Sale Feature

• 1052 is an ET daughter out of the great Erica 465 cow. This heifer offers exceptional performance, eye appeal and an excellent EPD profile. Her dam has a weaning ratio of 111 on her 4 calves.



LOT 121

Lot 122 AMDAHL ERICA 1158

BD: 2/9/21 Reg No: 20107717 Tattoo: 1158

CED	BW	WW	YW	SC	Milk	DOC	\$W	\$B
+13	+0.5	+74	+132	+1.10	+26	+18	+80	+173



CW	+60	Marb	+1.13	RE	+0.94
----	-----	------	-------	----	-------

1-5 Star Rating • C/E: 3-5 Hfhrs/1-2 Cows

• Sale Feature

• 1158 is an ET daughter out of the great Erica 465 cow. This heifer offers exceptional birth to weaning performance. She moves with ease and style. Her dam has a weaning ratio of 111 on her 4 calves.

C/E	Fleshing	Disposition
4	4	5



LOT 122

Angus Open Females



**LOT
123**

Lot 123 **AMDAHL MISS ANNIE 1100**
 BD: 1/17/21 Reg No: 20105807 Tattoo: 1100

G A R EARLY BIRD	G A R DAYLIGHT	CW
G A R ASHLAND	G A R PROGRESS 830	+54
CHAIR ROCK AMBUSH 1018	B/R AMBUSH 28	Marb
HA PRIME CUT 4493	G A R YIELD GRADE N366	+0.82
AMDAHL MISS ANNIE 987	VERMILION SIRLOIN	RE
AMDAHL ANNIE 5109-752	HA MISS BLACKCAP 9127	+0.50
	O C C X-TRA EASY 708X	
	AMDAHL JD ANNIE294-5109	

CED	BW	WW	YW	SC	Milk	DOC	\$W	\$B
+15	-0.6	+72	+130	+0.94	+28	+21	+80	+150

• Sale Feature
 • 1100 is a big spread Ashland heifer that earned a weaning ratio of 104. She is a big ribbed female that moves with ease.



**LOT
124**

Lot 124 **AMDAHL MISS ISABEL 1040**
 BD: 1/8/21 Reg No: 20103269 Tattoo: 1040

HOOVER NO DOUBT	MOGCK BULLSEYE	CW
BALDRIDGE FLAGSTONE F411	MISS BLACKCAP ELLSTON J2	+36
BALDRIDGE ISABEL Y69	STYLES UPGRADE J59	Marb
SK MR UPDATE 1	BALDRIDGE ISABEL T935	+0.29
AMDAHL MISS UPDATE 616-5117	TOKACH UPDATE 9009	RE
AMDAHL'S MISS EMBLAZON 616	S K MISS TRAVEL LOG ELBA 17	+0.55
	P A R EMBLAZON 4522	
	P A R EMBLAZON 50	

CED	BW	WW	YW	SC	Milk	DOC	\$W	\$B
-1	+2.1	+50	+94	+0.78	+24	+33	+46	+118

• 1040 is an E/T daughter out of Amdahl Miss Update 5117. She reflects her mother beautifully with depth of rib and is super sound structurally. Her dam has a weaning ratio of 102 on her 4 calves.

Lot 125 **AMDAHL DIXIE ERICA 1064**
 BD: 1/11/21 Reg No: 20105801 Tattoo: 1064

G A R EARLY BIRD	G A R DAYLIGHT	CW
G A R ASHLAND	G A R PROGRESS 830	+49
CHAIR ROCK AMBUSH 1018	B/R AMBUSH 28	Marb
SYDGEN ENHANCE	G A R YIELD GRADE N366	+0.93
AMDAHL DIXIE ERICA 967	SYDGEN EXCEED 3223	RE
AMDAHL'S MISS 3130 025	SYDGEN RITA 2618	+0.79
	O C C LINEBRED 661L	
	K S U MISS 616 3130	

CED	BW	WW	YW	SC	Milk	DOC	\$W	\$B
+11	+1.1	+77	+140	+0.76	+22	+21	+72	+163

• 1064 is a big spread heifer with great eye appeal and earned a weaning weight ratio of 106.



Lot 126 **AMDAHL MISS ROSE 1024**
 BD: 1/4/21 Reg No: 20106006 Tattoo: 1024

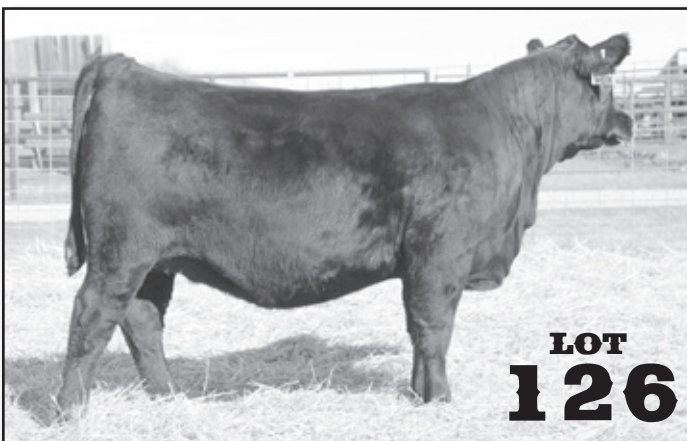
SILVEIRAS CONVERSION 8064	BT CROSSOVER 758N	CW
BUBS SOUTHERN CHARM AA31	EXG SARAS DREAM S609 R3	+43
HICKORY HILL ERICA 009	CONNELLY STIMULUS 8419	Marb
CONNELLY BLACK GRANITE	HICKORY HILL ERICA TA32	+0.89
AMDAHL JD MISS BG 610-861	CONNELLY CONSENSUS 7229	RE
AMDAHL JD MISS FM 030-610	EURA ELGA OF CONANGA 9109	+0.78
	MOGCK FRONTMAN 1141	
	AMDAHL'S JD MISS 22 030	

CED	BW	WW	YW	SC	Milk	DOC	\$W	\$B
+14	-0.3	+67	+116	+1.80	+22	+18	+69	+146

• 1024 is a moderate, easy fleshing Southern Charm daughter that is as complete phenotypically as they come. Her dam has a weaning ratio of 102 on her 2 calves.




AMDAHL MISS UPDATE 616-5117
 DAM OF LOT 124



**LOT
126**

Angus Open Females


Lot 127 **AMDAHL DIXIE 1088**
 BD: 1/16/21 Reg No: 20105868 Tattoo: 1088

SITZ STELLAR 726D	MOHNEN SUBSTANTIAL 272	CW
SITZ RESILIENT 10208	SITZ PRIDE 200B	+51
SITZ MISS BURGESS 1856	SITZ TOP GAME 561X	Marb
 HA COWBOY UP 5405	SITZ MISS BURGESS 4381	+0.13
AMDAHL DIXIE 014 841	HA OUTSIDE 3008	RE
AMDAHL DIXIE 7402 014	HA BLACKCAP LADY 1602	+0.24
	O C C LINEBRED 661L	
	JAUER 173 ANCHOR 2011 7402	

CED	BW	WW	YW	SC	Milk	DOC	SW	SB
+11	-0.1	+73	+137	+0.61	+23	+24	+76	+115

• **Sale Feature**
 • 1088 is an outstanding Resilient daughter and has exceptional depth of body and correctness. Her grandmother, Amdahl Dixie 014, served in the donor program. 1088 is well on her way to being a donor kind of female.

Lot 128 **AMDAHL MISS QUEEN 1155**
 BD: 2/8/21 Reg No: 20114580 Tattoo: 1155


G A R EARLY BIRD	G A R DAYLIGHT	CW
G A R ASHLAND	G A R PROGRESS 830	+51
CHAIR ROCK AMBUSH 1018	B/R AMBUSH 28	Marb
 G A R PHOENIX	G A R YIELD GRADE N366	+0.72
AMDAHL MISS QUEEN 937	G A R SURE FIRE	RE
D R QUEEN 127	G A R PROPHET N744	+0.93
	S A V FINAL ANSWER 0035	
	D R QUEEN 7036	

CED	BW	WW	YW	SC	Milk	DOC	SW	SB
+6	+3.7	+82	+136	+1.90	+23	+25	+78	+144

• 1155 is a full sister to 1141 out of the performance power-house dam, Amdahl Miss Queen 937. 1155 offers great femininity and style.



Lot 129 **AMDAHL MISS QUEEN 1141**
 BD: 2/4/21 Reg No: 20074024 Tattoo: 1141

G A R EARLY BIRD	G A R DAYLIGHT	CW
G A R ASHLAND	G A R PROGRESS 830	+69
CHAIR ROCK AMBUSH 1018	B/R AMBUSH 28	Marb
 G A R PHOENIX	G A R YIELD GRADE N366	+0.84
AMDAHL MISS QUEEN 937	G A R SURE FIRE	RE
D R QUEEN 127	G A R PROPHET N744	+0.84
	S A V FINAL ANSWER 0035	
	D R QUEEN 7036	

CED	BW	WW	YW	SC	Milk	DOC	SW	SB
+14	+1.5	+94	+157	+1.89	+20	+32	+93	+170

• 1141 is the deepest bodied heifer in the offering and earned a whopping 205 day weight of 767 lbs. She is a big spread heifer that has 12 EPD traits in the top 10%.



D R QUEEN 127
 MATERNAL GRANDAM OF LOTS 128 & 129

Lot 130 **AMDAHL MISS ANNIE 1076**
 BD: 1/14/21 Reg No: 20105802 Tattoo: 1076

G A R EARLY BIRD	G A R DAYLIGHT	CW
G A R ASHLAND	G A R PROGRESS 830	+51
CHAIR ROCK AMBUSH 1018	B/R AMBUSH 28	Marb
SYDGEN ENHANCE	G A R YIELD GRADE N366	+0.77
AMDAHL MISS ANNIE 957	SYDGEN EXCEED 3223	RE
AMDAHL JD MISS MODE 803-274	SYDGEN RITA 2618	+0.92
	AMDAHL'S MODERATOR 829	
	AMDAHL JD MS HONESTY 602-803	

CED	BW	WW	YW	SC	Milk	DOC	SW	SB
+8	+0.9	+72	+130	+0.80	+23	+23	+69	+154

• 1076 is a well balanced female and is one of the deepest bodied Ashland heifers you will find.



VIDEOS AND INFORMATION ONLINE AT WWW.AMDAHLANGUSANDHEREFORD.COM

Hereford Open Females



**LOT
131**

Lot 131 **TA DOMINETTE 103J**
 BD: Reg No: pending Tattoo: 103

HH ADVANCE 1207Y KB L1 DOMINO 5104B MONTANA MISS 740T CL 1 DOMINO 2121Z TA L1 DOMINETTE 704E KB L1 DOMINETTE 1200Y	HH ADVANCE 7034T ET HH MISS ADVANCE 6054S CL 1 DOMINO 9126J 1ET MONTANA MISS 756 CL 1 DOMINO 9122W 1ET CL 1 DOMINETTE 924W 1ET HH ADVANCE 6001S KB L1 DOMINETTE 678
---	--

CED	BW	WW	YW	SC	MM	M&G	REA	Marb	CHB
+1.9	+2.8	+60	+96	+1.9	++28	+59	+0.59	+0.19	+\$120

- Horned
- Big capacity 5104 daughter that offers flawless phenotype.



**LOT
132**

Lot 132 **TA DOMINETTE 117J**
 BD: 1/14/21 Reg No: 44278361 Tattoo: 117

HAROLDSON'S UPGRADE T100 33D BCC UPROAR 946G BCC SCARLET 403B CL 1 DOMINO 6104D TA L1 DOMINETTE 922G TA L1 DOMINETTE 729E	SHF TAHOE R117 T100 MOHICAN MISSEY 93W NJW 73S W18 HOMETOWN 10Y ET BCC DARLA 202Z CL1 DOMINO 41688 1ET CL 1 DOMINETTE 362A KB L1 DOMINO 406B TA L1 DOMINETTE 516C
--	--

CED	BW	WW	YW	SC	MM	M&G	REA	Marb	CHB
-0.8	+3.9	+55	+94	+1.0	+29	+56	+0.45	+0.06	+\$115

- Sale Feature
- Polled
- She is dark around the eyes, long spined and a stylish heifer that will fit in any herd.



**LOT
133**

Lot 133 **TA DOMINETTE 115J**
 BD: Reg No: pending Tattoo: 115

HH ADVANCE 1207Y KB L1 DOMINO 5104B MONTANA MISS 740T KB L1 DOMINO 337A TA L1 DOMINETTE 526C KB L1 DOMINETTE 344 A	HH ADVANCE 7034T ET HH MISS ADVANCE 6054S CL 1 DOMINO 9126J 1ET MONTANA MISS 756 KB L1 DOMINO 0186X KB 11 DOMINETTE 195Y KB L1 DOMINO 121Y KB L1 DOMINETTE 2109
---	--

CED	BW	WW	YW	SC	MM	M&G	REA	Marb	CHB
+2.5	+3.0	+56	+87	+1.8	+30	+60	+0.52	+0.16	+\$158

- Horned
- Dark red 5104 daughter that is red colored to the ground.
- Donor cow potential



**LOT
134**

Lot 134 **TA DOMINETTE 125J**
 BD: 1/24/21 Reg No: 44275272 Tattoo: 125

HAROLDSON'S UPGRADE T100 33D BCC UPROAR 946G BCC SCARLET 403B HH ADVANCE 7074E TA L1 DOMINETTE 901G TA L1 DOMINETTE 725E	SHF TAHOE R117 T100 MOHICAN MISSEY 93W NJW 73S W18 HOMETOWN 10Y ET BCC DARLA 202Z HH ADVANCE 1013Y ET HH MISS ADVANCE 3015A HH ADVANCE 4344B KB L1 DOMINETTE 4102B
---	---

CED	BW	WW	YW	SC	MM	M&G	REA	Marb	CHB
+0.9	+3.1	+55	+88	+1.2	+23	+50	+0.42	+0.13	+\$117

- Polled
- Moderate framed Uproar daughter that is built to last.

Hereford Open Females

Lot 135 **TA DOMINETTE 120J**
 BD: 1/17/21 Reg No: 44278637 Tattoo: 120

NJW 73S M326 TRUST 100W ET BEHM 100W CUDA 504C BEHM R294 JASMAN102Y KB L1 DOMINO 623D 1ET TA L1 DOMINETTE 942G KB L1 DOMINETTE 803U	KCF BENNETT 3008 M326 NJW P606 72N DAYDREAM 73S KCF BENNETT 9126J R294 CPH MS WRANGLER 1W CL 1 DOMINO 215Z HH MISS ADVANCE 1072Y ET JA L1 DOMINO 6002S KB L1 DOMINETTE 622
--	---

CED	BW	WW	YW	SC	MM	M&G	REA	Marb	CHB
+4.6	+1.9	+63	+103	+1.1	+35	+67	+0.47	+0.31	+\$153

- Polled
- 120 is a thick topped, long spined Cuda daughter that will add performance.

Lot 137 **TA MISS 121J**
 BD: 1/19/21 Reg No: 44278893 Tattoo: 121

NJW 73S M326 TRUST 100W ET BEHM 100W CUDA 504C BEHM R294 JASMAN102Y HH ADVANCE 1207Y MONTANA MISS 326A MONTANA MISS 108Y	KCF BENNETT 3008 M326 NJW P606 72N DAYDREAM 73S KCF BENNETT 9126J R294 CPH MS WRANGLER 1W HH ADVANCE 7034T ET HH MISS ADVANCE 6054S KB L1 DOMINO 842U MONTANA MISS 8107U
---	---

CED	BW	WW	YW	SC	MM	M&G	REA	Marb	CHB
+9.4	+1.6	+56	+90	+1.0	+31	+59	+0.33	+0.25	+\$136

- Scurred
- 121 is a smaller framed Cuda daughter that is red to the ground.

Lot 136 **TA DOMINETTE 106J**
 BD: Reg No: pending Tattoo: 106

HH ADVANCE 1207Y KB L1 DOMINO 5104B MONTANA MISS 740T CL 1 DOMINO 269Z 1ET TA L1 DOMINETTE 888F MONTANA MISS TA 518C	HH ADVANCE 7034T ET HH MISS ADVANCE 6054S CL 1 DOMINO 9126J 1ET MONTANA MISS 756 CL 1 DOMINO 860U CL 1 DOMINETTE 759T 1ET CL 1 DOMINO 2215Z 1ET MONTANA MISS 208Z
---	--

CED	BW	WW	YW	SC	MM	M&G	REA	Marb	CHB
+3.2	+2.1	+59	+90	+1.3	+32	+60	+0.4	+0.30	+\$130

- Horned
- 106 is a performance oriented young female that will raise replacement quality kind.



Angus Bred Females



**LOT
138**

Lot 138 **AMDAHL BLACKBIRD 007**
 BD: 1/5/20 Reg No: 19798205 Tattoo: 007

BASIN PAYWEIGHT 1682	BASIN PAYWEIGHT 006S	CW
DEER VALLEY GROWTH FUND	21AR O LASS 7017	+70
DEER VALLEY RITA 36113	PLATTEMERE WEIGH UP K360	Marb
AMDAHL'S ALL AMERICAN 324	DEER VALLEY RITA 9457	+0.33
AMDAHL BLACKBIRD 290-887	MYTTY IN FOCUS	RE
P A R HOMER'S BLACKBIRD 290	D R QUEEN 127	+0.41
	PAR DAKOTA HOMER 05	
	C R R FREIGHTLINER N281	

CED	BW	WW	YW	SC	Milk	DOC	\$W	\$B
+11	-0.1	+84	+155	+1.86	+32	+29	+93	+148

- Sale Feature
- 007 is a deep bodied, powerful Growth Fund daughter that is easy to look at with a powerful EPD profile. She earned a weaning ratio of 119 and yearling ratio of 112.
- 007 sells safe AI bred to Sitz Resilient with a heifer due 1-14-22.



**LOT
139**

Lot 139 **AMDAHL MISS ELBA 034**
 BD: 1/10/20 Reg No: 19820219 Tattoo: 034

G A R SURE FIRE	CONNEALY IN SURE 8524	CW
G A R PHOENIX	CHAIR ROCK 5050 G A R 8086	+66
G A R PROPHET N744	G A R PROPHET	Marb
KOUNAL JUNEAU 797	G A R DAYBREAK 440	+0.68
PRA JUNEAU ONWARD 2239	O C C JUNEAU 807J	RE
PRA ONWARD VRD 9184	KOUPALS ELBA 187	+0.46
	SITZ ONWARD 495R	
	PRA VRD 722 432	

CED	BW	WW	YW	SC	Milk	DOC	\$W	\$B
+11	+0.9	+72	+131	+1.88	+28	+19	+79	+154

- This is a unique opportunity to acquire two full sisters (034 and 057) out of the powerhouse Onward 2239 cow. Their dam, 2239 joined the donor pen for her fleshing ability, structural correctness and outstanding production.
- 034 sells safe AI bred to Sitz Resilient with a heifer due 1-7-22.

Lot 140 **AMDAHL ELBA 057**
 BD: 1/14/20 Reg No: 19820223 Tattoo: 057

G A R SURE FIRE	CONNEALY IN SURE 8524	CW
G A R PHOENIX	CHAIR ROCK 5050 G A R 8086	+66
G A R PROPHET N744	G A R PROPHET	Marb
KOUNAL JUNEAU 797	G A R DAYBREAK 440	+0.98
PRA JUNEAU ONWARD 2239	O C C JUNEAU 807J	RE
PRA ONWARD VRD 9184	KOUPALS ELBA 187	+0.77
	SITZ ONWARD 495R	
	PRA VRD 722 432	

CED	BW	WW	YW	SC	Milk	DOC	\$W	\$B
+10	+1.3	+76	+131	+1.99	+31	+18	+88	+168

- This is a unique opportunity to acquire two full sisters (034 and 057) out of the powerhouse Onward 2239 cow. Their dam 2239 joined the donor pen for her fleshing ability, structural correctness and outstanding production.
- 057 sells safe AI bred to Sitz Resilient due 5-18-22.



**LOT
141**

Lot 141 **AMDAHL MISS ERICA 0112**
 BD: 2/1/20 Reg No: 19788309 Tattoo: 0112

HA COWBOY UP 5405	HA OUTSIDE 3008	CW
AMDAHL RANGE MASTER 830	HA BLACKCAP LADY 1602	+48
AMDAHL MISS BP 380-509	AMDAHL BLOCK PARTY 368	Marb
G A R PROPHET	AMDAHL MISS HOMER 172-380	+0.72
AMDAHL MISS PROPHET 041-440	C R A BEXTOR 872 5205 608	RE
AMDAHL'S MISS BLAZE 272 041	G A R OBJECTIVE 1885	+0.76
	O C C LINEBRED 661L	
	P A R HEAVY BLAZE 272	

CED	BW	WW	YW	SC	Milk	DOC	\$W	\$B
+9	+0.8	+71	+120	+1.20	+23	+23	+75	+141

- 0112 is bred to succeed in any environment. You will have to look long and hard to find a more balanced female who carries this much genetic potential.
- 0112 sells safe AI bred to Sitz Resilient with a heifer due 1-6-22.

Angus Bred Females

Lot 142 **AMDAHL DIXIE ERICA 0145**

MUSGRAVE AVIATOR AMDAHL'S ROCKETEER 636 AMDAHL ERICA 431-465	KOUPLS B&B IDENTITY MCATL FOREVER LADY 1429-138 G A R PROPHET S A 1117 HOMER 431 228 HA OUTSIDE 3008 HA BLACKCAP LADY 1602 O C C EMBLAZON 854E P A R HEAVY DRIVE 478	CW +39 Marb +0.41 RE +0.66
--	---	---

CED	BW	WW	YW	SC	Milk	DOC	\$W	\$B
+2	+2.4	+65	+111	+1.00	+19	+16	+56	+128

• Dixie Erica 0145 is a moderate, long bodied Rocketeer daughter. She is backed by two of the very best females in the Amdahl program, Erica 465 and Emblazon 50. If you are looking for proven power, she is your female.
• 0145 sells safe AI bred to Sitz Resilient with a heifer due 1-6-22.

Lot 144 **AMDAHL ERICA ROSE 061**

SYDGEN EXCEED 3223 SYDGEN ENHANCE SYDGEN RITA 2618	SYDGEN GOOGOL SYDGEN FOREVER LADY 1255 SYDGEN LIBERTY GA 8627 FOX RUN RITA 9308 CB BLOCK PARTY 156 AMDAHL NIGHTWATCH 821 026 AMDAHL'S LEGEND 804 AMDAHL MISS SML 431-165	CW +41 Marb +0.77 RE +0.50
--	---	---

CED	BW	WW	YW	SC	Milk	DOC	\$W	\$B
+9	+0.8	+57	+105	+0.99	+29	+26	+61	+139

• She offers well rounded EPDs with a royal Amdahl pedigree.
• 061 is feminine with style and eye appeal.
• She was bred really early and had a calf in May but did not raise it because of her young age, will not affect her production or breed back.
• 061 sells safe AI bred to Sitz Resilient due 5-18-22.



Lot 146 **AMDAHL DIXIE ERICA 0148**

PLATTEMERE WEIGH UP K360 CONNEALY WEIGH UP 9109 5147 EURA ELGA OF CONANGA 9109	SITZ UPWARD 307R BARBARA OF PLATTEMERE 337 S A V BISMARCK 5682 EURA CAL OF CONANGA 56B CONNEALY CONSENSUS 7229 EURA ELGA OF CONANGA 9109 O C C LINEBRED 661L K S U MISS MAYOR 1188	CW +31 Marb +0.22 RE +0.54
--	---	---

CED	BW	WW	YW	SC	Milk	DOC	\$W	\$B
+18	-1.9	+51	+94	+0.75	+26	+16	+57	+111

• 0148 is a calving ease deluxe female who is stacked bred with the Conanga 9109 cow who is one of the top cows in the Angus breed. Great opportunity to purchase a female bred to perform and excel in any herd.
• 0148 sells safe AI bred to Sitz Profound with a heifer due 2-12-22.

Lot 143 **AMDAHL BLACKBIRD 023**

C R A BEXTOR 872 5205 608 G A R PROPHET G A R OBJECTIVE 1885	B A R EXT TRAVELER 205 CRA LADY JAYE 608 498 S EASY S S OBJECTIVE T510 OT26 G A R 1407 NEW DESIGN 2232 KOUPLS B&B EXTRA 0011 D R BLACKBIRD 148 JAUER 8214 ANCHOR 889 173 JAUER HOMER 550 109	CW +50 Marb +0.89 RE +0.24
--	---	---

CED	BW	WW	YW	SC	Milk	DOC	\$W	\$B
+12	+0.4	+57	+109	+0.14	+26	+17	+57	+145

• Blackbird 023 is a maternal powerhouse. This will be a great combination of Amdahl cow power mated to Sitz Resilient.
• 023 sells safe AI bred to Sitz Resilient with a heifer due 1-30-22.

Lot 145 **AMDAHL MISS ROSE 099**

PLATTEMERE WEIGH UP K360 CONNEALY WEIGH UP 9109 5147 EURA ELGA OF CONANGA 9109	SITZ UPWARD 307R BARBARA OF PLATTEMERE 337 S A V BISMARCK 5682 EURA CAL OF CONANGA 56B CONNEALY THUNDER CTS 7V03 BELLEMERE MAID 9T02 DEER VALLEY ALL IN AMDAHL'S MISS MVP 916-3164	CW +38 Marb +0.47 RE +0.65
--	---	---

CED	BW	WW	YW	SC	Milk	DOC	\$W	\$B
+9	-0.5	+62	+115	+1.03	+22	+22	+59	+134

• 099 offers a stacked pedigree of maternal excellence. This is a mating that is sure to succeed in any environment. She earned a yearling ratio of 105.
• 099 sells safe AI bred to Sitz Resilient with a heifer due 1-10-22.



AMDAHLS DIXIE ERICA 1188-933 – GRANDAM OF LOT 146

Angus Bred Females



Lot 147 **AMDAHL ERICA 431-465**
 BD: 4/1/14 Reg No: 17986116 Tattoo: 465

C R A BEXTOR 872 5205 608
 G A R PROPHET
 G A R OBJECTIVE 1885
 S A 650H HOMER 1117 911
 S A 1117 HOMER 431 228
 S A 8210 ANCHOR 228 630

B A R EXT TRAVELER 205
 CRA LADY JAYE 608 498 S EASY
 S S OBJECTIVE T510 0T26
 G A R 1407 NEW DESIGN 2232
 O C C HOMER 650H
 S A 655 RITO 9FB3 911 626
 JAUER 646 ANCHOR 8210 3154
 S A 353 TRAVELER 630 103

CW
+42
Marb
+0.83
RE
+0.32

CED	BW	WW	YW	SC	Milk	DOC	\$W	\$B
+6	+1.6	+66	+112	+0.32	+34	+7	+79	+126

- Erica 465 is our cornerstone donor female and is the mother of the out-standing herd sire, Rocketeer 636 and of the up and coming Jet Black 093.
- 465 has earned a weaning ratio of 111 on her 4 natural calves. She was recently successfully flushed. She averages 16 eggs per flush.
- 465 sells safe AI bred to Range Master with a heifer due 3-20-22.



LOT 147 SON - ROCKETEER 636



LOT 147 SON - JET BLACK 093



LOT 147 DAUGHTER - 760

Lot 148 **AMDAHL QUEEN 709-404**
 BD: 3/18/14 Reg No: 17986114 Tattoo: 404

C R A BEXTOR 872 5205 608
 G A R PROPHET
 G A R OBJECTIVE 1885
 P A R HOMER 62
 AMDAHL HOMER QUEEN 531-709
 P A R HEAVY QUEEN RITO 531

B A R EXT TRAVELER 205
 CRA LADY JAYE 608 498 S EASY
 S S OBJECTIVE T510 0T26
 G A R 1407 NEW DESIGN 2232
 O C C HOMER 650H
 P A R AMBUSH LASSIE 1DA
 B A R EXT TRAVELER 205
 P A R HEAVY QUEEN 658

CW
+31
Marb
+0.87
RE
+0.13

CED	BW	WW	YW	SC	Milk	DOC	\$W	\$B
+11	+0.2	+59	+102	+0.91	+34	+22	+79	+109

- 404 joined the donor pen for her exceptional maternal power and has a second to none breed back and nursing ratio. She has earned a nursing ratio of 108 on her 5 natural calves. Her 6 full brother sons sired by Amdahl Prime Beef are some of the most powerful set of full brothers that you will find in the country.
- 404 sells safe AI bred to Flagstone with a heifer due 1-4-22.



LOT 148 DAM - AMDAHL HOMER QUEEN 531-709



LOT 148 SON - 7132



LOT 148 SON - 618

Angus Bred Females

Lot 149 AMDAHL MISS UPDATE 616-5117

BD: 3/30/15 Reg No: 18509119 Tattoo: 5117

TOKACH UPDATE 9009
SK MR UPDATE 1
S K MISS TRAVEL LOG ELBA 17

P A R EMBLAZON 4522
AMDAHL'S MISS EMBLAZON 616
P A R EMBLAZON 50

SITZ UPWARD 307R
TOKACH BLACK LADY 4100
CARLSON 004 TRAVEL LOG 513
S K MISS STRATEGY ELBA 10
O C C EMBLAZON 854E
P A R H DUTY 56
O C C EMBLAZON 854E
P A R HEAVY DRIVE 478

CW
+34
Marb
-0.21
RE
+0.64

CED	BW	WW	YW	SC	Milk	DOC	SW	SB
-3	+2.8	+45	+92	+0.50	+25	+23	+38	+99

• We are offering our very best donor cows in this sale and 5117 is no exception. She has earned a nursing ratio of 102 on her 4 natural calves. 5117 has an outstanding set of 5 full brothers sired by Baldrige Flagstone that will push the scales down and make outstanding females.

• 5117 sells safe AI bred to Sitz Resilient due 6-1-22.



**LOT
149**

Lot 150 AMDAHL MISS RENO 9104

BD: 2/2/19 Reg No: 19501066 Tattoo: 9104

KM BROKEN BOW 002
SPRING COVE RENO 4021
SPRING COVE LIZA 021
ANGUS
AMDAHL BLOCK PARTY 368
AMDAHL MISS BP 380-509
AMDAHL MISS HOMER 172-380

SUMMITCREST COMPLETE 1P55
SUMMITCREST PRINCESS OP12
C C A EMBLAZON 702
SPRING COVE LIZA 721
CB BLOCK PARTY 156
AMDAHL'S MISS BLAZE 272 041
O C C HOMER 650H
AMDAHL MISS PP 7155-172

CW
+42
Marb
+0.84
RE
+0.66

CED	BW	WW	YW	SC	Milk	DOC	SW	SB
+12	-1.2	+58	+107	+0.49	+30	+17	+70	+143

• 9104 is a calving ease deluxe female out of Reno and is a half sister to Amdahl Range Master 830. She is backed by more Pathfinder dams in her pedigree than any other female in the offering.

• 9104 sells safe AI bred to GAR Ashland with a heifer due 1-10-22.



**LOT
150**



AMDAHL MISS BP 380-509
DAM OF LOT 150



RANGE MASTER 830
MATERNAL BROTHER OF LOT 150

Lot 151 AMDAHL MISS BLACKCAP 916

BD: 1/10/19 Reg No: 19501043 Tattoo: 916

CONNEALY ARSENAL 2174
CONNEALY ARMORY
EBBA OF CONANGA 808
ANGUS
MYTTY IN FOCUS
D R BLACKCAP 121
D R BLACKCAP 2715

CONNEALY PACKER 547
BLACK RICE OF CONANGA 9529
DALEBANKS CENTENNIAL 2526
E B A OF CONANGA 819
S A F FOCUS OF E R
MYTTY COUNTESS 906
O C C NEUTON 713
D R MISS IDEAL 9127

CW
+44
Marb
+0.31
RE
+0.08

CED	BW	WW	YW	SC	Milk	DOC	SW	SB
+5	+1.1	+61	+115	+1.34	+32	+27	+69	+121

• Miss Blackcap 916 is a deep bodied Armory daughter that is backed by a powerful Pathfinder dam, 121.

• 916 sells safe AI bred to Baldrige Flagstone with a heifer due 1-26-22.



**LOT
151**

Angus Bred Females



Lot 152		AMDAHL ANNIE 493-814						
BD: 1/7/18		Reg No: 19280618	Tattoo: 814					
CONNEALY ARSENAL 2174	CONNEALY PACKER 547	CW						
CONNEALY ARMORY	BLACK RICE OF CONANGA 9529	+23						
EBBA OF CONANGA 808	DALEBANKS CENTENNIAL 2526	Marb						
ANGUS P A R DAKOTA MODERATOR 341	E B A OF CONANGA 819	+0.43						
PAR MODERATOR PAXTON 493	PAR MODERATOR'S BROADSIDE 09	RE						
P A R PAXTONS ANNIE 141	P A R MODERATE EMBLAZON 49	-0.01						
	O C C PAXTON 730P							
	BAA ANNIE 5212A							
CED	BW	WW	YW	SC	Milk	DOC	\$W	\$B
+6	+0.4	+61	+99	+0.41	+31	+18	+78	+86

- Annie 814 is a deep bodied Army daughter that has earned a nursing ratio of 105 on her 2 calves.
- 814 sells safe AI bred to Flagstone with a heifer due 1-10-22.



Lot 153		AMDAHL'S MISS BLAZE 041-733						
BD: 1/16/17		Reg No: 18951629	Tattoo: 733					
CONNEALY CONSENSUS 7229	CONNEALY CONSENSUS	CW						
CONNEALY BLACK GRANITE	BLUE LILLY OF CONANGA 16	+28						
EURA ELGA OF CONANGA 9109	S A V BISMARCK 5682	Marb						
ANGUS O C C LINEBRED 661L	EURA CAL OF CONANGA 56B	+0.45						
AMDAHL'S MISS BLAZE 272 041	O C C HOMER 650H	RE						
P A R HEAVY BLAZE 272	O C C DIXIE ERICA 686J	+0.25						
	P A R GLADIATOR 270							
	P A R EMBLAZON 340							
CED	BW	WW	YW	SC	Milk	DOC	\$W	\$B
+16	-1.1	+51	+87	+0.03	+21	+18	+56	+111

- This long bodied Black Granite daughter is backed by a Pathfinder dam 041.
- 733 sells safe AI bred to Baldrige Flagstone with a heifer due 2-5-22.



Lot 154		AMDAHL'S QUEEN B P 709-3101						
BD: 3/22/13		Reg No: 17710867	Tattoo: 3101					
WERNER WAR PARTY 2417	CONNEALY ONWARD	CW						
CB BLOCK PARTY 156	BAAR USA LADY JAYE 489	+32						
CB 965 MAINLINE	WOODHILL MAINLINE	Marb						
HERD BOOK P A R HOMER 62	742 CB YIELD GRADE	+0.61						
AMDAHL HOMER QUEEN 531-709	O C C HOMER 650H	RE						
P A R HEAVY QUEEN RITO 531	P A R AMBUSH LASSIE 1DA	+0.42						
	B A R EXT TRAVELER 205							
	P A R HEAVY QUEEN 658							
CED	BW	WW	YW	SC	Milk	DOC	\$W	\$B
+1	+2.2	+44	+75	+1.05	+34	+16	+55	+120

- This Block Party daughter has stood the test of time, earning a nursing ratio of 103 on 7 calves. She has a long spine and is built for the long haul.
- 3101 sells safe AI bred to Sitz Resilient with a heifer due 1-27-22.



Lot 155		AMDAHL DIXIE RING 828-860						
BD: 1/25/18		Reg No: 19305453	Tattoo: 860					
S A V 707 RITO 9969	RITO 707 OF IDEAL 3407 7075	CW						
S A V RINGMASTER 1184	BR POLLY 8077-472	+26						
S A V EMBLYNETTE 5416	S A F 598 BANDO 5175	Marb						
ANGUS JAUER MODERATOR 297 523	S A V EMBLYNETTE 7319	+0.03						
AMDAHL DIXIE MODERATOR 828	O C C MODERATOR 825M	RE						
JAUER HOMER 550 109	JAUER HELMSMAN 784 297	+0.51						
	O C C HOMER 650H							
	JAUER TRAVELDGE 550 327							
CED	BW	WW	YW	SC	Milk	DOC	\$W	\$B
+2	+3.2	+47	+77	+0.30	+11	+15	+29	+89

- 860 is a deep bodied Ringmaster daughter that has excellent look and style with a great udder.
- 860 sells safe AI bred to Range Master due 2-22-22.

Hereford Bred Females

Lot 156 **TA DOMINETTE 0328H**
 BD: 1/19/20 Reg No: 44180298 Tattoo: 0328

NJW 73S M326 TRUST 100W ET BEHM 100W CUDA 504C BEHM R294 JASMAN102Y KB L1 DOMINO 504C ET TA L1 DOMINETTE 830F TA L1 DOMINETTE 625D	KCF BENNETT 3008 M326 NJW P606 72N DAYDREAM 73S KCF BENNETT 9126J R294 CPH MS WRANGLER 1W HH ADVANCE 2005Z CL 1 DOMINETTE 7136T 1ET CL 1 DOMINO 2121Z KB L1 DOMINETTE 3157 A
---	---

CED	BW	WW	YW	SC	MM	M&G	REA	Marb	CHB
+8.2	+1.6	+67	+106	+1.3	+39	+73	+0.54	+0.33	+\$151

- Sale Feature
- Scurred
- Thick topped and long bodied Cuda daughter that is backed by true cow power.
- 0328 sells safe bred to BCC Uproar 946 due 2-11-22.



LOT 156

Lot 157 **TA DOMINETTE 0330H**
 BD: 1/19/20 Reg No: 44180297 Tattoo: 0330

CHURCHILL SENSATION 028X UPS SENSATION 2504 ET NJW BW LADYSPORT DEW 78P ET HH ADVANCE 4344B TA L1 DOMINETTE 760E MONTANA MISS TA 507C	UPS DOMINO 3027 CHURCHILL LADY 7202T ET RU 20X BOULDER 57G SADDLE VLY LADYSPORT 120 HH ADVANCE 221 ET HH MISS ADVANCE 7003T HH ADVANCE 2036Z ET MONTANA MISS 108Y
--	--

CED	BW	WW	YW	SC	MM	M&G	REA	Marb	CHB
+6.4	+0.5	+49	+74	+1.0	+35	+60	+0.39	+0.05	+\$108

- Horned
- She is a darker red Sensation daughter with exceptional look and style.
- Sells safe bred to TA Sensation 0343 due 2-25-22.



LOT 157

Lot 158 **TA L1 DOMINETTE 0358H ET**
 BD: 3/10/20 Reg No: 44173211 Tattoo: 0358

CL 1 DOMINO 4168B 1ET CL 1 DOMINO 6104D CL 1 DOMINETTE 362A HH ADVANCE 1207Y KB L1 DOMINETTE 376 A KB L1 DOMINETTE 167Y	CL 1 DOMINO 216Z 1ET CL 1 DOMINETTE 7136T 1ET CL 1 DOMINO 105Y CL 1 DOMINETTE 1152Y HH ADVANCE 7034T ET HH MISS ADVANCE 6054S CL 1 DOMINO 795T 1ET KB L1 DOMINETTE 6136
--	--

CED	BW	WW	YW	SC	MM	M&G	REA	Marb	CHB
+1.2	+3.1	+48	+84	+1.0	+34	+58	+0.2	+0.05	+\$111

- Horned
- 0358 is a feminine 6104 daughter out of the great 376 donor cow.
- She has three 2 year old full brothers in the sale.
- 0358 sells safe bred to TA Sensation 0343 due 4-17-22.



KB L1 DOMINETTE 376 A
 DAM OF LOT 158

Lot 159 **TA L1 DOMINETTE 750E**
 BD: 2/14/17 Reg No: 43808812 Tattoo: 750

HH ADVANCE 1038Y ET KB L1 DOMINO 406B KB 11 DOMINETTE 195Y CL 1 DOMINO 2215Z 1ET MONTANA MISS TA 518C MONTANA MISS 208Z	HH ADVANCE 8050U ET HH MISS ADVANCE 6109S HH ADVANCE 9027W KB L1 DOMINETTE 4152 CL 1 DOMINO 862U CL 1 DOMINETTE 5142R CL 1 DOMINO 849U MONTANA MISS 0147X
--	--

CED	BW	WW	YW	SC	MM	M&G	REA	Marb	CHB
+2.3	+3.7	+55	+86	+0.9	+29	+57	+0.16	+0.06	+\$96

- Horned
- Long bodied and travels with ease.
- 750 sells safe AI bred to BCC Uproar 946 with a heifer due 1-21-22.



LOT 159

Hereford Bred Females

Lot 160 TA L1 DOMINETTE 826F ET
 BD: 1/19/18 Reg No: 43967050 Tattoo: 826

UPS DOMINO 3027 CHURCHILL SENSATION 028X CHURCHILL LADY 7202T ET KB L1 DOMINO 454P MONTANA MISS 745T MONTANA MISS 210	CL 1 DOMINO 9126J 1ET UPS MISS DIAMOND 1353 GH RAMBO 279R CL 1 DOMINETTE 301N CL 1 DOMINO 9126J 1ET KB MISS MARK 144 SNS 47G SILVER DANDY 11J MONTANA MISS 768
--	---

CED	BW	WW	YW	SC	MM	M&G	REA	Marb	CHB
+3.5	+1.8	+51	+80	+1.4	+40	+65	+0.38	+0.11	+\$104

- Horned
- 826 is a larger framed ET daughter sired by Sensation 028.
- She is performance oriented.
- 826 sells safe AI bred to KB L1 Domino 623 due 1-27-22.

Lot 162 TA L1 DOMINETTE 888F
 BD: 3/7/18 Reg No: 43963911 Tattoo: 888

CL 1 DOMINO 860U CL 1 DOMINO 269Z 1ET CL 1 DOMINETTE 759T 1ET CL 1 DOMINO 2215Z 1ET MONTANA MISS TA 518C MONTANA MISS 208Z	CL 1 DOMINO 6375 1ET CL 1 DOMINETTE 5142R CL 1 DOMINO 590R CL 1 DOMINETTE 193L CL 1 DOMINO 862U CL 1 DOMINETTE 5142R CL 1 DOMINO 849U MONTANA MISS 0147X
---	---

CED	BW	WW	YW	SC	MM	M&G	REA	Marb	CHB
+0.2	+3.1	+51	+89	+1.0	+26	+51	+0.22	-0.07	+\$84

- Horned
- Good footed, larger framed 269Z daughter that is performance oriented.
- 888 sells safe AI bred to BCC Uproar 946 due 1-27-22.

Lot 164 TA L1 DOMINETTE 912G
 BD: 1/11/19 Reg No: 44062161 Tattoo: 912

CL 1 DOMINO 9122W 1ET CL 1 DOMINO 215Z CL 1 DOMINETTE 055X CL 1 DOMINO 2121Z TA L1 DOMINETTE 523C KB L1 DOMINETTE 267 Z	CL 1 DOMINO 732T CL 1 DOMINETTE 475P CL 1 DOMINO 860U CL 1 DOMINETTE 7136T 1ET CL 1 DOMINO 9122W 1ET CL 1 DOMINETTE 924W 1ET KB L1 DOMINO 6152 KB L1 DOMINETTE 633
--	---

CED	BW	WW	YW	SC	MM	M&G	REA	Marb	CHB
-2.2	+3.7	+64	+105	+1.1	+26	+58	+0.31	+0.28	+\$143

- Horned
- 912 is a dark red 215Z daughter that will make a great brood cow.
- 912 sells safe bred to TA Sensation 0343 with a bull due 3-9-22.

Lot 161 TA L1 DOMINETTE 934G
 BD: 1/26/19 Reg No: 44062138 Tattoo: 934

L1 DOMINO 08469 HH ADVANCE 2158Z HH MISS ADVANCE 6188S CL 1 DOMINO 849U MONTANA MISS 208Z MONTANA MISS 0147X	L1 DOMINO 05516 L1 DOMINETTE 99374 CL 1 DOMINO 320N HH MISS ADVANCE 4172P ET CL 1 DOMINO 648S CL 1 DOMINETTE 591R 1ET KB L1 DOMINO 521R JA L1 DOMINETTE 0220
---	---

CED	BW	WW	YW	SC	MM	M&G	REA	Marb	CHB
-2.8	+5.4	+52	+85	+1.1	+29	+55	+0.17	+0.07	+\$95

- Horned
- 934 is a good footed and easy traveling 2158 daughter.
- She is bred up early and ready to raise the next generation of performance Hereford cattle.
- 934 sells safe AI bred to BCC Uproar 946 with a heifer due 1-13-22.

Lot 163 TA L1 DOMINETTE 854F
 BD: 2/1/18 Reg No: 43963885 Tattoo: 854

HH ADVANCE 2005Z KB L1 DOMINO 504C ET CL 1 DOMINETTE 7136T 1ET CL 1 DOMINO 2215Z 1ET TA L1 DOMINETTE 620D KB L1 DOMINETTE 1156Y	L1 DOMINO 08469 HH MISS ADVANCE 8009U L1 DOMINO 890061 CL 1 DOMINETTE 273M 1ET CL 1 DOMINO 862U CL 1 DOMINETTE 5142R HH ADVANCE 9027W KB L1 DOMINETTE 551R
--	---

CED	BW	WW	YW	SC	MM	M&G	REA	Marb	CHB
+5	+3.4	+54	+89	+1.1	+30	+57	+0.25	+0.12	+\$107

- Horned
- 854 is a dark colored 504C daughter with good feet structure.
- 854 sells safe AI bred to BCC Uproar 946 due 2-12-22.

Lot 165 COMMERCIAL
 BD: Commercial Tattoo: 799

HH ADVANCE 1207Y KB L1 DOMINO 5104B MONTANA MISS 740T	HH ADVANCE 7034T ET HH MISS ADVANCE 6054S CL 1 DOMINO 9126J 1ET MONTANA MISS 756
---	---

PUREBRED HEREFORD - NO PAPERS

CED	BW	WW	YW	SC	MM	M&G	REA	Marb	CHB

- Horned
- 799 is a good footed, long bodied 4344 daughter.
- She is white faced with red legs.
- Sells purebred with no papers.
- 799 sells safe AI bred to TA Sensation 0343 due 3-7-22.

GIVE AWAY BRED HEIFER

Lot 166 AMDAHL MISS BLACKBIRD 0130
 BD: 2/7/20 Reg No: 19788323 Tattoo: 0130

HA COWBOY UP 5405 AMDAHL RANGE MASTER 830 AMDAHL MISS BP 380-509 SK MR UPDATE 1 AMDAHL MISS UPDATE 373-6130 PAR EUREKA'S LINK 373	HA OUTSIDE 3008 HA BLACKCAP LADY 1602 AMDAHL BLOCK PARTY 368 AMDAHL MISS HOMER 172-380 TOKACH UPDATE 9009 S K MISS TRAVEL LOG ELBA 17 AKERS MISSING LINK 9603 P A R'S EUREKA'S PRIDE 130	CW +37 Marb +0.57 RE +0.26
--	---	---

CED	BW	WW	YW	SC	Milk	DOC	SW	SB
+3	+2.4	+58	+106	+1.20	+15	+13	+41	+124

- The give away bred heifer will be given to a youth ages 10-17 whose parents/grandparents purchase an animal. The youth must attend the sale and can register to win a bred heifer at the end of the sale. Details will be announced after the sale. Youth must be present to win.
- Will make a great starter female.
- 0130 is safe AI bred to Sitz Resilient due 5-12-22.

SALE DAY SEMEN SPECIAL

We are running a sale day semen special on these featured herd sires- Amdahl Rocketeer 636, Amdahl Prime Beef 9100, Amdahl Jet Black 093, Amdahl Range Master 830 and BCC Uproar 946. Semen will be available at \$15 per straw on sale day so be sure to take advantage of this special. We will help assist in the shipping and transport of the semen. Please contact Tim or JD Amdahl with any questions.



AMDAHL PRIME BEEF 9100

BD: 01/30/2019 Reg No: *19501071 Tattoo: 9100

VERMILION SIRLOIN O C C AMDAHL EMBLAZON 709U
 HA PRIME CUT 4493 AMDAHL NIGHTWATCH 821 026
 SIRE HA MISS BLACKCAP 9127 DAM AMDAHL JD NIGHTWATCH 679-821

CED	BW	WW	YW	SC	Milk	Doc	\$W	\$B
+6	+3.4	+67	+130	+0.70	+19	+17	+52	+160

New herd sire that is out of one of our most proven females in the herd, Amdahl Nightwatch 026. He will add performance in a moderate frame and will add thickness and muscle structure to his progeny.

BCC UPROAR 946G

BD: 02/18/2019 Reg No: 44054179 Tattoo: 946

SHF TAHOE R117 T100 NJW 735 W18 HOMETOWN 10Y ET
 HAROLDSON'S UPGRADE T100 33D BCC SCARLET 403B [DOD]
 SIRE MOHICAN MISSEY 93W DAM BCC DARLA 202Z

CED	BW	WW	YW	MM	M&G	SC	REA	Marb
+3.4	+4.0	+53	+92	+18	+44	+1.0	+0.37	+0.16

Uproar is an excellent outcross on our line one Herefords and will add pigment, thickness and natural muscle structure to his progeny. We are very excited about this new, young herd sire.

CW
+60
Marb
+0.32
RE
+0.77
Fat
-0.025



AMDAHL RANGE MASTER 830

BD: 01/13/2018 Reg No: *19274953 Tattoo: 830

HA OUTSIDE 3008 AMDAHL BLOCK PARTY 368
 HA COWBOY UP 5405 AMDAHL MISS BP 380-509
 SIRE HA BLACKCAP LADY 1602 DAM AMDAHL MISS HOMER 172-380

CED	BW	WW	YW	SC	Milk	Doc	\$W	\$B
+7	+2.8	+72	+126	+1.03	+16	+5	+58	+131

Range Master adds depth of rib and loads of thickness packed into a moderate frame. He is backed by generations of Pathfinder cows.

CW
+41
Marb
+0.58
RE
+0.39
Fat
-0.026

AMDAHL'S ROCKETEER 636

BD: 01/27/2016 Reg No: *18529618 Tattoo: 636

KOUPALS B&B IDENTITY G A R PROPHET
 MUSGRAVE AVIATOR AMDAHL ERICA 431-465
 SIRE MCATL FOREVER LADY 1429-138 DAM S A 1117 HOMER 431 228

CED	BW	WW	YW	SC	Milk	Doc	\$W	\$B
+2	+1.7	+66	+114	+0.71	+27	+5	+70	+160

Strong maternal bull with outstanding growth and will put length of body into his progeny.

CW
+56
Marb
+0.67
RE
+0.84
Fat
-0.005



AMDAHL JET BLACK 093

BD: 01/21/2020 Reg No: +*19799437 Tattoo: 093

CONNEALY BLACK GRANITE G A R PROPHET
 BAR R JET BLACK 5063 AMDAHL ERICA 431-465
 SIRE BAR R IRIS ANITA 0113 DAM S A 1117 HOMER 431 228

CED	BW	WW	YW	SC	Milk	Doc	\$W	\$B
+6	+2.6	+87	+147	+0.56	+34	+16	+97	+157

CW
+75
Marb
+0.38
RE
+1.02
Fat
-0.012

Bill's Gate Mfg



Four Wheeler Gate will be given away!!

We will have a drawing to give away one of two four-wheeler gates at the end of the sale by drawing a lot number of a purchased bull

- **Auto Drive-Through • Easy Set-up •**
- **Self Standing • Time Saving •**



PROGRESSIVE CATTLEMEN

RELY ON VITAFERM®
DON'T FORGET ABOUT
THE OTHER HALF OF THE EQUATION

Our VitaFerm line is built to benefit more than just your cowherd. Let our products help you get the most out of your bull battery as well.



"VitaFerm® ConceptAid® prepares our bulls and females for the breeding season marvelously. We know we're doing all we can for them. It really helps bring them through the stress, and harshness South Dakota weather will bring."
- Tim Amdahl

For more information:
Amdahl Angus and Herefords
Brett Tostesson • (320) 226-3915



VITAFERM PERFORMANCE THAT PAYS



Welcome Cattlemen!

Nutra-lix, Inc. is proud to partner with Amdahl Angus & Hereford as we bring superior quality supplements paired with their superior quality genetics. Congratulations to this year's buyers!

www.NutraLix.com
800.568.6952

It's at Home on Your Range!







Amdahl
Angus & Hereford

21747 Coyote Lane
Piedmont, SD 57769

PRESORTED
FIRST CLASS
U.S. POSTAGE
PAID
PERMIT NO. 618
RAPID CITY, SD

Bull and Female Sale
Saturday,
November 20, 2021

Free wintering on bulls
Free nationwide delivery
Full 1 year guarantee

Address Service Requested



Uproar

Selling:

- 93 ANGUS BULLS**
- 23 HEREFORD BULLS**
- 15 ANGUS BRED FEMALES**
- 10 HEREFORD BRED FEMALES**
- 3 ANGUS DONOR COWS**
- 14 OPEN ANGUS HEIFERS**
- 7 OPEN HEREFORD HEIFERS**